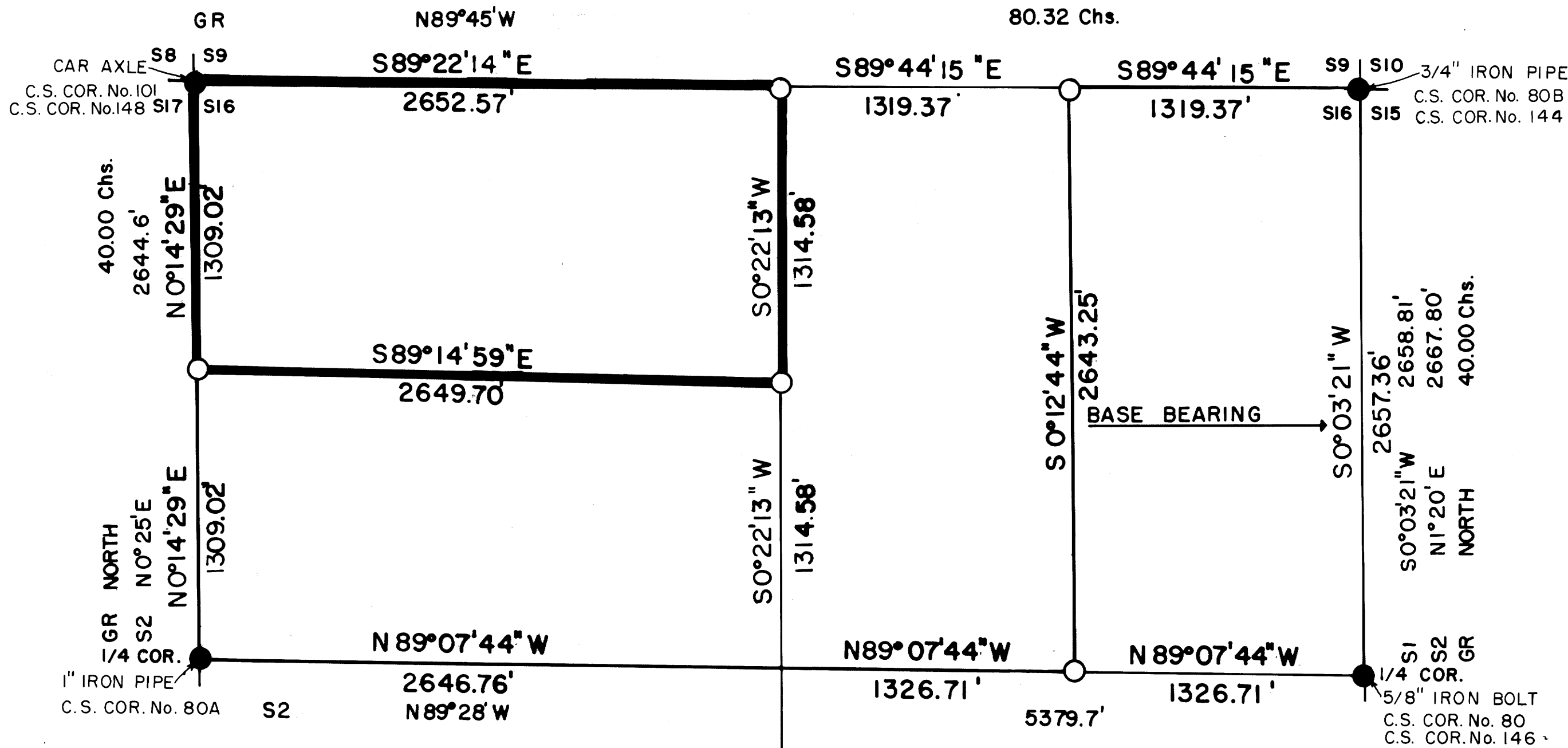


COUNTY SURVEYORS FILE DATA
DO NOT REMOVE FROM OFFICE

S16 T32S R5W W.M.
NORTH HALF

63/14/1
M114-78



CERTIFICATE OF SURVEY

I, ARTHUR R. RAMBO, REGISTRATION No.1086
REGISTERED PROFESSIONAL LAND SURVEYOR
STATE OF OREGON, HEREBY CERTIFY THAT
THIS MAP CORRECTLY REPRESENTS A SURVEY
MADE BY ME OR UNDER MY DIRECTION IN
CONFORMANCE WITH THE LAWS OF THE STATE
OF OREGON.

REGISTERED
PROFESSIONAL
LAND SURVEYOR

Arthur R. Rambo

OFFICE
ARTUR R. RAMBO
No. 1086

LEGEND

- FOUND COUNTY MONUMENT (SEE NARRATIVE)
 - SET 5/8" BY 30" REBAR WITH 2" ALUM. CAP
 - G.R. GOVERNMENT RECORD DATED MAY 10, 1855
 - S2 MAP FILE M7-53
 - S1 CS FILE M110-12
 - LINE POSTED AND BLAZED THIS SURVEY
- ALSO SEE ACCOMPANYING NARRATIVE

BASIS OF BEARING

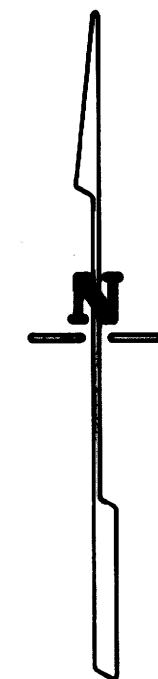
CS FILE M110-12

DATE

27 MARCH 1992

SCALE

1" = 500'



SURVEY FOR

MEDFORD CORPORATION
P.O. BOX 550
MEDFORD, OREGON
97501

AND

SILVER BUTTE TIMBER Co.
P.O. BOX 4
RIDDLE, OREGON
97469

SURVEY BY

ARTHUR R. RAMBO
735 VISTA PARK DRIVE
EAGLE POINT, OREGON
97524

63/14/1
M114-78

SURVEY NARRATIVE TO COMPLY WITH O.R.S. 209.250

FILED

JK

APR 20 1992 *JP*

SEE MAP IN

M 114-78

COUNTY SURVEYOR
DOUGLAS COUNTY, ORE.

JP

LOCATION:

SECTION 16 TOWNSHIP 32 SOUTH RANGE 5 WEST
WILLAMETTE MERIDIAN (NORTH HALF)

SURVEY FOR:

MEDFORD CORPORATION AND SILVER BUTTE TIMBER CO.
P.O. BOX 550 P.O. BOX 4
MEDFORD OR 97501 RIDDLE OR 97469

SURVEY BY:

ARTHUR R. RAMBO PLS 1086
735 VISTA PARK DRIVE
EAGLE POINT OR 97524

DATE:

MARCH 27, 1992

BASIS OF BEARING:

RECORDED SURVEY DOUGLAS COUNTY SURVEY FILE M110-12
NORTH HALF OF SECTION LINE COMMON TO SEC. 16 & 17

PURPOSE:

TO MONUMENT THE CORNERS, AND POST AND BLAZE THE
LINES AROUND THE NORTH HALF OF THE NORTHWEST 1/4
OF SAID SECTION 16. TO MONUMENT THE EAST 1/16
CORNER COMMON TO SECTION 9 AND 16, AND TO MONUMENT
THE CENTER EAST 1/16 CORNER OF SECTION 16. (AS
SHOWN ON THE MAP TO ACCOMPANY THIS NARRATIVE)

PROCEDURE:

A SEARCH OF RECORDS IN THE DOUGLAS COUNTY SURVEYORS
OFFICE REVEALED THAT ALL THE ORIGINAL CORNERS,
EXCEPT THE NORTH 1/4 CORNER, HAD BEEN RE-
ESTABLISHED FROM ORIGINAL EVIDENCE OR BY
PROPORTIONATE MEASUREMENT.

I USED A WILD TC1000 TOTAL STATION, TO RUN A
RANDOM LINE TRAVERSE TYING TO THE CORNERS NEEDED TO
SUBDIVIDE THE NORTH HALF OF SECTION 16. I DOUBLED
ALL ANGLES AND DOUBLE MEASURED ALL DISTANCES.

AN INSPECTION OF COUNTY RECORD (M8-25) SHOWED A
METHOD OTHER THAN DOUBLE PROPORTION MEASUREMENT
HAD BEEN UTILIZED TO PROPORTION THE SOUTHWEST
CORNER OF SAID SECTION 16. FURTHER INSPECTION OF
SURVEYS IN THIS AREA SHOWED THAT LAND USE AND FILED
SURVEYS HAD USED THIS CORNER DIRECTLY OR
INDIRECTLY. THE WEST 1/4 CORNER OF SECTION 16 WAS
ALSO PROPORTIONED ON THIS SAME SURVEY (M8-25). I
CONDUCTED ANOTHER SEARCH FOR EVIDENCE OF THE
ORIGINAL 1/4 CORNER, SPENDING 5 MAN DAYS SEARCHING.

C.S. File No. 63/191

BUT COULD FIND NO EVIDENCE OF THE ORIGINAL 1/4 CORNER. SURVEY (M8-25) WAS FILED IN JULY 1952 AND LAND USE IN THIS AREA INDICATES THAT THE CORNER ESTABLISHED ON THIS SURVEY HAS BEEN ACCEPTED BY LAND OWNERS ON ALL SIDES OF SAID 1/4 CORNER. I ACCEPTED THE LOCATION OF THE WEST 1/4 CORNER OF SAID SECTION 16 AS ESTABLISHED ON THE GROUND ACCORDING TO FILED SURVEY (M8-25) AS THE BEST POSSIBLE EVIDENCE FOR THIS CORNER.

THE NORTH 1/4 CORNER HAD NOT BEEN RE-ESTABLISHED. I FOUND EVIDENCE OF ORIGINAL BEARING TREES FOR THE LOCATION OF SAID 1/4 CORNER AND SET A MONUMENT AND MARKED NEW BEARING TREES AS DESCRIBED UNDER CORNERS FOUND.

CORNERS FOUND AND ACCEPTED FOR CONTROL

ALL MEASUREMENTS TO BEARING TREES ARE TO THE CENTER OF TREE AT THE BASE UNLESS OTHERWISE STATED.

SECTION CORNER COMMON TO SECTIONS 8, 9, 16, AND 17 TOWNSHIP 32 SOUTH RANGE 5 WEST. AT THE CORNER LOCATION I FOUND AN AXLE EXPOSED 8 INCHES.

FROM WHICH:

- AN 18 1/2 INCH DIAMETER FIR BEARS N 7°58' E 36.1 FEET WITH AN UNOPENED FACE.
- A 19 INCH DIAMETER FIR BEARS N 15°33' W 33.7 FEET WITH AN UNOPENED FACE.
- A 19 1/2 INCH DIAMETER FIR BEARS S84°18' W 30.1 FEET WITH UNOPENED FACES.
- A 26 INCH DIAMETER FIR SNAG BEARS S 69°22' W 14.0 FEET WITH AN OPEN FACE NO SCRIBES VISIBLE.
- A 27 1/2 INCH DIAMETER MAPLE BEARS S 0°35' E 40.8 FEET WITH AN UNOPENED FACE.

ONE-QUARTER CORNER COMMON TO SECTION 9 AND 16 TOWNSHIP 32 SOUTH RANGE 5 WEST. AT THE CORNER LOCATION I SET A 5/8 BY 30 INCH REBAR WITH A 2 INCH DIAMETER ALUMINUM CAP EXPOSED 4 INCHES MARKED:

T32S R5W
S9
+ 1/4
S16
LS1086

FROM WHICH:

- AN INDETERMINATE SIZE HEART OF FIR TREE BEARS S 55° W 3.3 FEET TO CHAINING NOTCH TREE MARKED 1/4S BT (ORIGINAL TREE)
- AN INDETERMINATE SIZE FIR STUMP HOLE BEARS N 12°33' E 43.3 FEET TO THE CENTER OF STUMP HOLE. (ORIGINAL TREE)

M 114-78

I MARK NEW TREES. (MEASURE TO CENTER OF TREE AT BASE)
A 10 INCH DIAMETER FIR BEARS N 0°14' W 43.9 FEET MARKED 1/4S9
IN UPPER FACE, BT IN LOWER FACE WITH 3/4 INCH WASHER MARKED
LS1086 NAILED TO FACE.
A 10 INCH DIAMETER FIR BEARS N35°58' E 28.2 FEET MARKED 1/4S9
IN UPPER FACE, BT IN LOWER FACE WITH A 3/4 INCH WASHER MARKED
LS1086 NAILED TO FACE.
A 9 INCH DIAMETER FIR BEARS S31°40' E 22.4 FEET MARKED 1/4S16
IN UPPER FACE, BT IN LOWER FACE WITH A 3/4 INCH WASHER MARKED
LS1086 NAILED TO FACE.
A 13 1/2 INCH DIAMETER FIR BEARS S12°52' W 17.7 FEET MARKED
1/4S16 IN UPPER FACE, BT IN LOWER FACE WITH A 3/4 INCH WASHER
MARKED LS1086 NAILED TO FACE.

SECTION CORNER COMMON TO SECTIONS 9, 10, 15, AND 16 TOWNSHIP 32
SOUTH RANGE 5 WEST. AT THE CORNER LOCATION I FOUND A 1 INCH O.D.
DIAMETER PIPE EXPOSED 2 INCHES BELOW GROUND LEVEL.

FROM WHICH:

AN 11 INCH DIAMETER CEDAR BEARS N54°18' W 9.5 FEET WITH
UNOPENED FACES.
A 19 INCH DIAMETER OAK BEARS N67°00' E 47.2 FEET WITH UNOPENED
FACE.
A 14 1/2 INCH OAK BEARS S69°07' E 40.0 FEET WITH UNOPENED FACE.

ONE-QUARTER CORNER COMMON TO SECTION 15 AND 16 TOWNSHIP 32 SOUTH
RANGE 5 WEST. AT THE CORNER LOCATION I FOUND A BOLT EXPOSED 2
INCHES HEAD OF BOLT IS 1" BY 1".

FROM WHICH:

AN AXLE BEARS SOUTHWEST 4 INCHES.
A 21 1/2 INCH DIAMETER FIR BEARS N10°08' E 10.1 FEET
WITH AN UNOPENED FACE.

ONE-QUARTER CORNER COMMON TO SECTION 16 AND 21 TOWNSHIP 32 SOUTH
RANGE 5 WEST. AT THE CORNER LOCATION I FOUND A 1 INCH O.D. PIPE
EXPOSED 4 INCHES:

FROM WHICH:

A 15 INCH DIAMETER OAK BEARS S10°34' E 26.4 FEET WITH
UNOPENED FACE.
A 16 INCH DIAMETER OAK BEARS N45°20' E 14.1 FEET WITH
UNOPENED FACE.
AN OAK STUMP HOLE BEARS S64°55' E 403.5 FEET TO CENTER
OF HOLE. A 21 INCH DIAMETER OAK STUMP LIES SOUTH OF
HOLE WITH AN EXPOSED WEATHERED FACE NO SCRIBES VISIBLE.
A 1 INCH O.D. PIPE AT THE NORTHWEST FENCE CORNER OF
GEORGE JOHNSON PROPERTY BEARS S27°34' E 518.9 FEET.

ONE-QUARTER CORNER COMMON TO SECTION 16 AND 17 TOWNSHIP 32 SOUTH
RANGE 5 WEST. AT THE CORNER LOCATION I FOUND A 1 INCH O.D. PIPE
BURIED 3 INCHES:

FROM WHICH:

A 16 INCH DIAMETER MADRONA BEARS N39°11' W 11.4 FEET
WITH UNOPENED FACE.
AN 18 1/2 INCH DIAMETER MADRONA BEARS S50°16' E 17.7
FEET WITH UNOPENED FACE.
A 1 INCH IRON PIPE (UNKNOWN ORIGIN) BEARS N44°01' E
1.7 FEET.

CORNERS SET THIS SURVEY

ALL MEASUREMENTS ARE TO THE CENTER OF TREE AT BASE UNLESS OTHERWISE STATED. A 3/4 INCH DIAMETER BRASS WASHER MARKED LS 1086 IS NAILED TO THE LOWER FACE OF EACH TREE.

EAST ONE-SIXTEENTH CORNER COMMON TO SECTION 9 AND 16 TOWNSHIP 32 SOUTH RANGE 5 WEST. AT THE CORNER LOCATION I SET A 5/8 BY 30 INCH REBAR WITH A 2 INCH DIAMETER ALUMINUM CAP EXPOSED 5 INCHES MARKED:

T32S R5W
S9
E + 1/16
S16
LS 1086

FROM WHICH:

A 1 1/4 INCH DIAMETER BOLT THREADS UP EXPOSED 6 1/2 INCHES BEARS N62°31'W 1.6 FEET. (ORIGIN UNKNOWN)
A 15 INCH DIAMETER MADRONA BEARS S7°54'W 27.8 FEET MARKED E 1/16 S16 IN UPPER FACE, BT IN LOWER FACE.
AN 1 1/2 INCH DIAMETER CEDAR BEARS N72°44'W 17.2 FEET MARKED E 1/16 S9 IN UPPER FACE, BT IN LOWER FACE

NORTH ONE-SIXTEENTH CORNER COMMON TO SECTION 16 AND 17 TOWNSHIP 32 SOUTH RANGE 5 WEST. AT THE CORNER LOCATION I SET A 5/8 BY 30 INCH REBAR WITH A 2 INCH DIAMETER ALUMINUM CAP, EXPOSED 7 INCHES, MARKED:

T32S R5W
N 1/16
S17 + S16

LS 1086

FROM WHICH:

A 13 INCH DIAMETER FIR BEARS S37°53'W 7.7 FEET MARKED N 1/16 S17 IN UPPER FACE, BT IN LOWER FACE.
A 13 1/2 INCH DIAMETER FIR BEARS N68°23'E 21.4 FEET MARKED N 1/16 S16 IN UPPER FACE, BT IN LOWER FACE.

CENTEREAST ONE-SIXTEENTH CORNER SECTION 16 TOWNSHIP 32 SOUTH RANGE 5 WEST. AT THE CORNER LOCATION I SET A 5/8 BY 30 INCH REBAR WITH A 2 INCH DIAMETER ALUMINUM CAP, EXPOSED 6 INCHES, MARKED:

T32S R5W
S16 + CE 1/16

LS 1086

FROM WHICH:

A 10 INCH DIAMETER MADRONA BEARS N6°23'E 20.9 FEET MARKED CE 1/16 S16 IN UPPER FACE, BT IN LOWER FACE.
A 10 INCH DIAMETER OAK BEARS S28°38'W 15.2 FEET MARKED CE 1/16 S16 IN UPPER FACE, BT IN LOWER FACE.

M 114 - 78

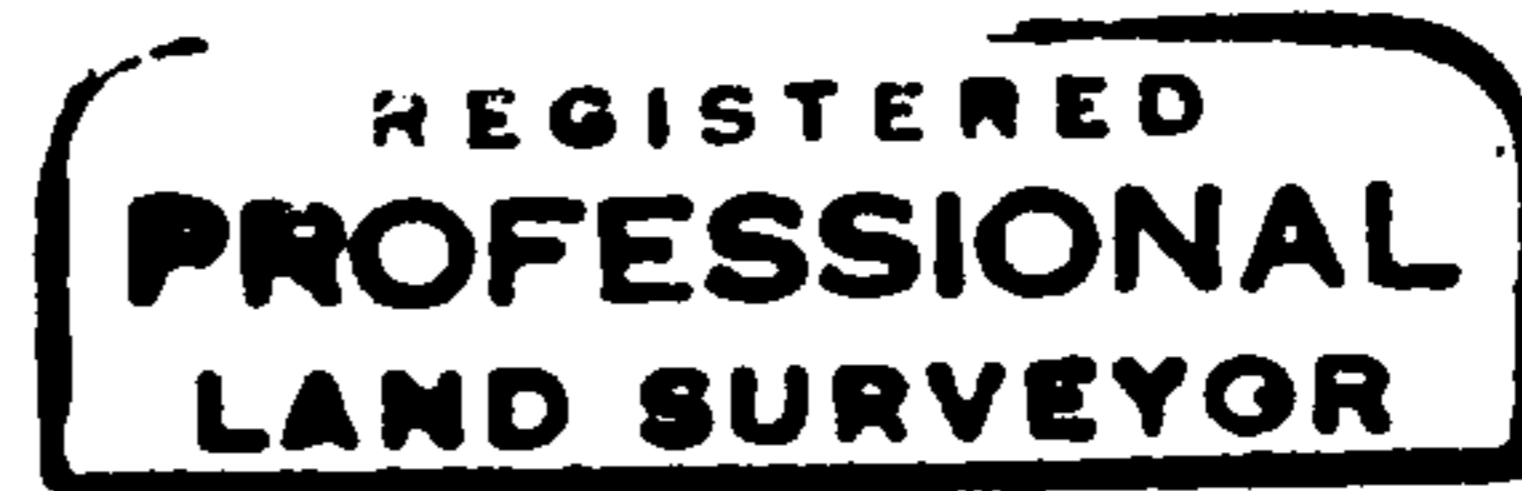
CENTERNORTH ONE-SIXTEENTH CORNER SECTION 16 TOWNSHIP 32 SOUTH
RANGE 5 WEST. AT THE CORNER LOCATION I SET A 5/8 BY 30 INCH REBAR
WITH A 2 INCH DIAMETER ALUMINUM CAP, EXPOSED 6 INCHES, MARKED:

T325 R5W
S16
CN + 1/16

LS 1086

FROM WHICH:

A 15 1/2 INCH DIAMETER MADRONA BEARS N40°33'E 9.3 FEET MARKED
CN 1/16 S16 IN UPPER FACE, BT IN LOWER FACE.
A 25 INCH DIAMETER MADRONA BEARS N43°59'W 20.5 FEET MARKED
CN 1/16 S16 IN UPPER FACE, BT IN LOWER FACE.



Arthur R. Rambo

