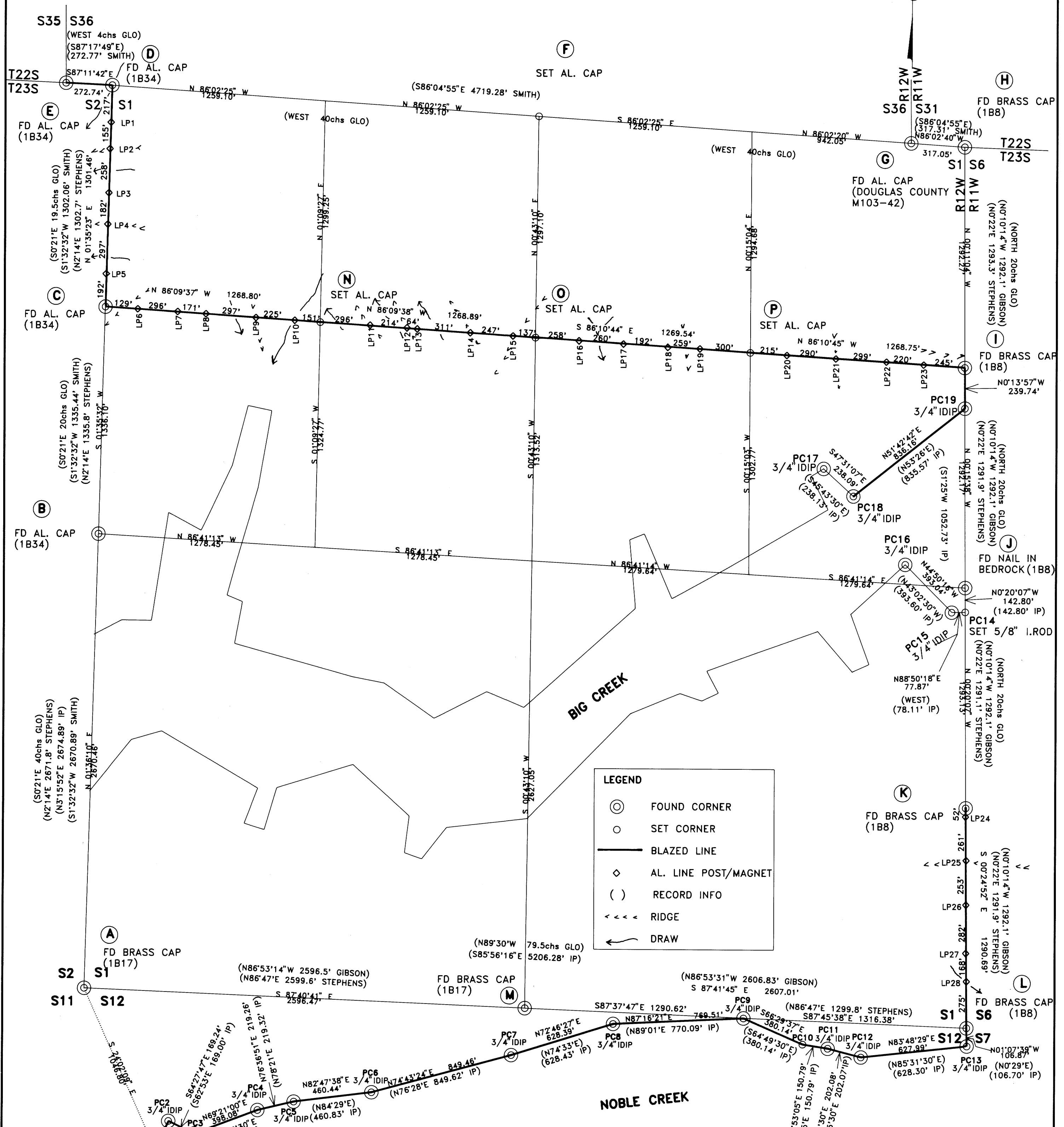


COUNTY SURVEYORS FILE DATA
DO NOT REMOVE FROM OFFICE

SURVEY FOR IP TIMBERLANDS OPERATING Co.

LOCATED IN SECTIONS 1, 2 AND 12, T23S, R12W, W.M.
COOS COUNTY, OREGON

SCALE 1"=400' DATE FEB 1992



LEGEND

- ⊙ FOUND CORNER
- SET CORNER
- BLAZED LINE
- ◇ AL. LINE POST/MAGNET
- () RECORD INFO
- RIDGE
- ← DRAW

REFERENCE SURVEYS
 1B38 WILCOX 1988
 M103-42 (DOUGLAS Co.) SMITH 1986
 1B34 SMITH 1985
 1B17 GIBSON 1970
 UNRECORDED IP SURVEY 1962
 1B8 GIBSON 1958
 PB3/77 STEPHENS 1952
 ORIG GLO SLANG 1910
 ORIG GLO WIPPLE 1894
 ORIG GLO WRIGHT 1880

**REGISTERED
PROFESSIONAL
LAND SURVEYOR**

Harvey Wilcox

OREGON
MAY 17, 1988
HARVEY WILCOX
2244

**Stuntzner Engineering
& Forestry**

ENGINEERING * LAND SURVEYING * FORESTRY
PLANNING * WATER RIGHTS

705 South 4th St.
Post Office Box 118
Coos Bay, Oregon 97420

Phone: (503) 267-2872
Fax: (503) 267-0588

BASIS OF BEARINGS
BASIS OF BEARINGS IS A SOLAR OBSERVATION

FOR NARRATIVE SEE C.S. 63/119

Drawn By:	WILCOX	Date:	FEB 1992
Checked By:	WILCOX	Drawing No.:	2
Designed By:		Revised:	
Job Name:	BIG-NOBLE		

M114-75

FILED

JS

APR 9 1992

COUNTY SURVEYOR
DOUGLAS COUNTY, ORE.

SURVEY LOCATED IN SECTION 1, T23S, R12W, W.M. COOS COUNTY, OREGON BY STUNTZNER ENGINEERING & FORESTRY P.O. BOX 118, COOS BAY, OR. DATED FEB 1992

NARRATIVE

THE PURPOSE OF THIS SURVEY WAS TO MONUMENT THE CORNERS AND MARK THE LINES AS SHOWN ON SURVEY MAP No. M114-75 AS PER INTERNATIONAL PAPER CONTRACT No. SA 91-71.

I STARTED AT THE BRASS CAP SET BY GIBSON IN 1958 TO MARK THE NE CORNER OF SECTION 1. I THEN FOUND THE ORIGINAL CLOSING CORNER FOR SECTION 31 OF T22S, R11W & SECTION 36 OF T22S, R12W AS REMONUMENTED BY GIBSON IN 1958. I ALSO FOUND THE TRUE CLOSING CORNER AS SET BY SMITH IN 1986. I THEN FOUND THE NW CORNER OF SECTION 1 AS REMONUMENTED BY SMITH IN 1986. I ALSO FOUND THE CLOSING CORNER FOR SECTIONS 35 & 36 AS REMONUMENTED BY SMITH IN 1986. THIS GAVE ME THE CONTROL TO SEARCH FOR THE N1/4 OF SECTION 1. I WAS UNABLE TO FIND THE N1/4 SO I RESET IT BY SINGLE PROPORTION BETWEEN THE NE AND NW CORNERS OF SECTION 1 AS PREVIOUSLY MENTIONED. I THEN TIED THE N1/16, 1/4 AND S1/16 OF S1 & S6 AS SET BY GIBSON IN 1958. I THEN TIED THE ORIGINAL SE CORNER S1 AS REMONUMENTED BY GIBSON IN 1958. I THEN TIED THE S1/4 S1 AS SET BY STEPHENS IN 1952 AND REMONUMENTED BY GIBSON IN 1958. I THEN TIED THE N1/16 AND 1/4 FOR SECTIONS 1 & 2. THIS GAVE ME THE CONTROL TO SUBDIVIDE THE NORTH HALF OF SECTION 1 AS PER THE BLM MANUAL. I SET THE NW1/16, CN1/16 AND THE NE1/16. I BLAZED THE LINE FROM THE CLOSING CORNER OF SECTIONS 35 & 36 TO THE CORNER OF SECTIONS 1 & 2; THENCE TO THE N1/16 S1 & S2; THENCE TO THE CN1/16; THENCE TO THE N1/16 S1 & S6. I ALSO BLAZED FROM THE S1/16 S1 & S6 TO THE SE CORNER S1.

I THEN TIED THE LAST TWO CORNERS SHOWN ON AN UNRECORDED SURVEY MAP BY IP ON THE SOUTH SIDE OF BIG CREEK. I THEN SET THE INTERSECTION OF THE PROPERTY LINE AND THE SECTION LINE BY GOING FULL DISTANCE FROM THE 1/4 CORNER AS SHOWN ON THE IP MAP. I THEN TIED THE LAST TWO CORNERS ON THE NORTH SIDE OF BIG CREEK AND FOUND A 3/4" IDIP AT THE INTERSECTION OF THE PROPERTY LINE AND THE SECTION LINE THAT IS NOT SHOWN ON THE IP MAP. I BLAZED FROM THIS IDIP BACK TO THE LAST CORNER SHOWN ON THE IP MAP. ALL CORNERS WERE SET FROM CLOSED TRAVERSE LOOPS. ALUMINUM LINE POST SHOWN ON MY MAP WERE SET AS OFFSETS FROM TRAVERSE POINTS. EQUIPMENT USED WAS A WILD T1000 THEODOLITE AND WILD DI 1000 EDM.

BEARINGS TO BT'S WERE TAKEN WITH A HAND COMPASS TO THE ROOT BOLE. DISTANCES WERE MEASURED TO SIDE CENTER (A SPIKE WAS SET FOR A CHAINING POINT ON NEW BT'S). SMITH AND GIBSON MEASURED TO THE FACE WHICH ACCOUNTS FOR THE DIFFERENCES SHOWN.

FILED

sh

APR 9 1992

COUNTY SURVEYOR
DOUGLAS COUNTY, ORE.

ASSISTING PERSONNEL WERE JERRY ESTABROOK AND KEITH CLEVINGER. BEARINGS TO BTS WERE TAKEN WITH HAND COMPASS (DEC'L = 19DEG E.) TO THE ROOT BOLE. DISTANCES ARE TO SIDE CENTER. A SPIKE WAS SET AT SIDE CENTER FOR A CHAINING POINT ON ALL NEW BT'S MARKED.

ALUMINUM LINE POSTS SHOWN ON THE MAP WERE REFERENCED BY TAGS SET AT GROUND LEVEL ON TREES AS SHOWN BELOW:

LP1 20" ALDER BRS S8W 12.9'
LP2 36" FIR STUMP BRS S5E 3.8'
LP3 40" FIR BRS N5W 3.3'
LP4 32" FIR BRS N15E 12.9'
LP5 18" FIR BRS S51W 27.0'
LP6 4" CHERRY BRS N40W 5.7'
LP7 9" CHERRY BRS N47W 5.3'
LP8 42" FIR BRS N22W 29.7'
LP9 8" MYRTLE BRS S75W 3.6'
LP10 30" ALDER BRS N32E 16.2'
LP11 8" MYRTLE BRS S67W 9.4'
LP12 36" FIR BRS N68E 2.4'
LP13 20" ALDER BRS N10E 16.0'
LP14 10" MYRTLE BRS S82W 4.6'
LP15 6" CHERRY BRS S65W 1.4'
LP16 16" ALDER BRS N57W 5.7'
LP17 8" FIR BRS S87W 4.3'
LP18 6" ALDER BRS N12E 16.1'
LP19 6" CHERRY BRS N1E 5.1'
LP20 17" ALDER BRS S83E 6.7'
LP21 6" MYRTLE BRS N48W 2.4'
LP22 19" FIR BRS N68E 3.0'
LP23 10" ALDER BRS S88W 24.4'
LP24 6" MYRTLE BRS S68W 1.5'
LP25 16" FIR BRS N68W 2.7'
LP26 4" MYRTLE BRS N72W 16.7'
LP27 9" FIR BRS N55W 2.5'
LP28 12" ALDER BRS N56W 17.3'

FILED

APR 9 1992

COUNTY SURVEYOR
DOUGLAS COUNTY, ORE.

CORNER INFORMATION IS AS SHOWN BELOW:

(A) SW CORNER SECTION 1
 FOUND 3" BRASS CAP ON 1 1/2" IDIP (GIBSON)
 AN IRON SPOKE BRS N72W 2.0'
 FD BT'S: 64" FIR SNAG BRS N33W 36.3' (ORIG)
 23" ALDER W/ HEALED FACE & TAG BRS S57W
 6.7'(GIBSON)
 44" FIR STUMP BRS N42E 31.5'(GIBSON)
 54" FIR STUMP BRS S20W 56.8'(GIBSON)
 12" ALDER BRS S14E 32.0'(GIBSON)

(B) W 1/4 SECTION 1
 FD 3 1/2" ALUM. CAP SET FLUSH IN SANDSTONE BEDROCK
 (SMITH)
 A FD 1/2" IDIP BRS S22W 18.3'(STEPHENS)
 FD BT'S: 12" MYRTLE W/ BARK SCRIBE BRS S58W
 50.7'(STEPHENS)
 12" MYRTLE W/ BARK SCRIBE & TAG BRS S56W
 47.7'(SMITH)
 7" CHERRY W/ VISIBLE SCRIBE & TAG BRS
 N65E 11.1'(SMITH)

(C) N1/16 SECTIONS 1 & 2
 FD 3 1/2" ALUM. CAP ON 1 3/4" ALUM. PIPE W/ 4"X4"
 POST ALONGSIDE (SMITH)
 A FD 1/2" IDIP BRS N81E 1.7' (STEPHENS)
 FD BT'S: 49" FIR W/ HEALED FACE & TAGS BRS N4E
 36.8' (STEPHENS)
 55" FIR W/ HEALED FACE & TAG BRS S32W
 43.3' (STEPHENS)

FILED

APR 9 1992

COUNTY SURVEYOR
DOUGLAS COUNTY, ORE.

(D) NW CORNER SECTION 1
 FD 3 1/2" ALUM. CAP ON 1 3/4" ALUM. PIPE IN CREEK
 4"X4" WHITE POST BRS N60W 3.9' (SMITH)
 FD BT'S: 11" ALDER W/ BARK SCRIBE & TAG BRS S30W
 80.4' (SMITH)
 18" ALDER W/ BARK SCRIBE & TAG BRS S14E
 67.6' (69.4' SMITH)
 MKD BT: 38" CEDAR SCRIBED & TAGGED BRS N38W 52.9'

(E) SW CORNER SECTION 36 T22S R12W
 FD 3 1/2" ALUM. CAP ON 1 3/4" ALUM. PIPE W/ 4"X4"
 WHITE POST ALONGSIDE (SMITH)
 FD BT'S: 30" FIR W/ VIS. SCRIBE & TAG BRS N46W
 20.8' (SMITH)
 16" MYRTLE W/ VIS. SCRIBE & TAG BRS N67E
 33.8' (SMITH)

(F) N1/4 SECTION 1 T23S R12W
 SET 3 1/4" ALUM. CAP ON 3/4"X24" ALUM. ROD W/ ALUM.
 POST AND SIGN ALONGSIDE. BURIED A MAGNETIC MARKER
 ALONGSIDE.
 MKD BT'S: 28" FIR SCRIBED "1/4 S1 BT" W/ X AND TAGS
 BRS S84W 8.1'
 46" CEDAR SCRIBED "BT" W/ X AND TAGS BRS
 N31E 41.1'
 26" MAPLE FACE SCRIBED "BT" W/ X AND TAGS
 BRS N61E 72.5'
 42" FIR SCRIBED "1/4 S1 BT" W/ X AND TAGS
 BRS S49E 36.1'

(G) SE CORNER SECTION 36 T22S R12W AMENDED CLOSING
 CORNER
 FD 3 1/2" ALUM. CAP ON 1 3/4" ALUM. PIPE W/ 4"X4"
 POST ALONGSIDE (SMITH)
 FD BT'S: 33" FIR W/ VIS. SCRIBE & TAG BRS N8W 80.2'
 (SMITH)
 31" CEDAR W/ HEALED FACE & TAG BRS N25W
 18.0' (SMITH)
 ORIGINAL CLOSING CORNER ALUM. CAP BRS
 SODEG 19'42"W 20.95'

FILED

JK

APR 9 1992

COUNTY SURVEYOR
DOUGLAS COUNTY, ORE.

(G) SE CORNER SECTION 36 ORIGINAL CLOSING CORNER
 FD 3 1/2" ALUM. CAP W/ ORIGINAL STONE ALONGSIDE
 4"X4" WHITE POST BRS S49W 2.4' (SMITH)
 FD BT'S: 36" FIR SNAG W/ VIS. SCRIBE BRS N17E 19.9'
 (GIBSON)
 31" CEDAR W/ HEALED FACE & TAG BRS N13W
 36.8' (SMITH)
 10" CHERRY W/ VIS. SCRIBE & TAG BRS N75E
 60.0' (SMITH)

(H) NE CORNER SECTION 1
 FD 3" BRASS CAP ON 2" ODIP W/ 4"X4" WHITE POST
 ALONGSIDE (GIBSON)
 FD BT'S: 26" FIR W/ HEALED FACE & TAG BRS S83E
 47.0' (39.6' STEPHENS)
 30" FIR SNAG W/ VIS. SCRIBE BRS N49E
 68.0' (GIBSON)
 MKD BT: 10" MAPLE SCRIBED "T23S R12W S1 BT" W/ X
 AND TAG BRS S64W 22.4'

(I) N1/16 SECTIONS 1 & 6
 FD 3" BRASS CAP ON 1 1/2" IDIP (SMITH)
 A FD 3/4" IDIP BRS EAST 2.1' (STEPHENS)
 FD BT'S: 38" FIR W/ HEALED FACE & TAG BRS N6E
 27.2' (STEPHENS)
 32" FIR W/ HEALED FACE & TAG BRS S23E
 13.9' (STEPHENS)
 29" FIR W/ HEALED FACE & TAG BRS N58W
 28.7 (GIBSON)
 8" ALDER W/ ROTTED FACE & TAG BRS S63E
 3.8' (4.7' GIBSON)

FILED

zh

APR 9 1992


COUNTY SURVEYOR
DOUGLAS COUNTY, ORE.

ⓐ E1/4 SECTION 1
 FD NAIL IN X IN SANDSTONE BEDROCK (GIBSON)
 FD BT'S: 30" FIR W/ HEALED FACE & TAG BRS S15E
 101.1' (GIBSON)
 27" FIR W/ HEALED FACE & TAG BRS N79E
 50.6' (GIBSON)
 MKD BT: 43" MAPLE SCRIBED "1/4 S1 BT" W/ X AND TAGS
 BRS N66W 95.5'
 SET ALUM. POST W/ SIGN BRS S61W 5.4'

ⓑ S1/16 SECTIONS 1 & 6
 FD 3" BRASS CAP ON 1 3/4" ODIP ON RIDGE W/ 4"X4"
 POST ALONGSIDE (GIBSON)
 FD BT'S: 34" FIR W/ HEALED FACE BRS N69W 29.8'
 (STEPHENS)
 34" FIR W/ 2 HEALED FACES BRS S49W 19.0'
 (STEPHENS & SMITH)
 54" FIR STUMP BRS N24E 45' (GIBSON)

ⓒ SE CORNER SECTION 1
 FD 3" BRASS CAP ON 1 1/2" IDIP 16" HIGH (GIBSON)
 FD BT'S: 32" FIR STUMP W/ VIS. SCRIBE BRS S73W
 25.0' (STEPHENS)
 30" FIR SNAG W/ ROTTED FACE BRS S58E
 19.4' (STEPHENS)
 27" FIR W/ HEALED FACE & TAGS BRS N54W
 43.8' (LAFLAMME)
 16" ALDER W/ BARK SCRIBE & TAGS BRS N17E
 38.0' (GIBSON)
 18" FIR W/ HEALED FACE & TAGS BRS S15W
 69.1' (79.3' GIBSON)
 24" MAPLE W/ HEALED FACE & TAGS BRS S48E
 67.2' (GIBSON)

FILED


 APR 9 1992

COUNTY SURVEYOR
 DOUGLAS COUNTY, ORE.

(M) S1/4 SECTION 1
 FD 3" BRASS CAP ON 1 1/2" IDIP W/ 4"X4" WHITE POST
 ALONGSIDE. PIPE LEANS TO SOUTH BUT BT'S CONFIRM
 POSITION IS GOOD.
 FD BT'S: 34" FIR W/ HEALED FACE & TAG BRS S37W
 34.0' (STEPHENS)
 22" FIR W/ HEALED FACE & TAG BRS N12E 30.0'
 (GIBSON)
 MKD NEW BT'S: 13" ALDER BARK SCRIBED "1/4 S1 BT" W/
 TAGS BRS N53E 13.8'
 18" ALDER BARK SCRIBED "1/4 S12 BT"
 W/ TAGS BRS S71W 10.5'

(N) NW 1/16 SECTION 1
 SET 3 1/4" ALUM. CAP ON 3/4"X36" ALUM. ROD W/ ALUM.
 POST AND SIGN ALONGSIDE. BURIED MAGNETIC MARKER
 ALONGSIDE.
 MKD BT'S: 11" CASCARA BARK SCRIBED "NW1/16 S1 BT"
 W/ X AND TAGS BRS N57E 17.2'
 30" MAPLE SCRIBED "NW1/16 S1 BT" W/ X
 AND TAGS BRS S29E 24.8'

(O) CN1/16 SECTION 1
 SET 3 1/4" ALUM. CAP ON 3/4"X36" ALUM. ROD W/ ALUM.
 POST AND SIGN ALONGSIDE. BURIED A MAGNETIC MARKER
 ALONGSIDE.
 MKD BT'S: 9" MYRTLE SCRIBED "CN1/16 S1 BT" W/ X AND
 TAGS BRS N35W 19.8'
 8" MYRTLE SCRIBED " CN1/16 S1 BT" W/ X
 AND TAGS BRS N56E 7.5'

FILED

zh

APR 9 1992

COUNTY SURVEYOR
DOUGLAS COUNTY, ORE.

Ⓟ NE1/16 SECTION 1
SET 3 1/4" ALUM. CAP ON 3/4"X36" ALUM. ROD W/ ALUM.
POST AND SIGN ALONGSIDE. BURIED A MAGNETIC MARKER
ALONGSIDE.
MKD BT'S: 32" FIR SCRIBED " NE1/16 S1 BT" W/ X AND
TAGS BRS N84W 61.7'
5" MYRTLE SCRIBED "NE1/16 S1 BT" W/ X
AND TAGS BRS N66E 5.9'

PC1
FD 3/4" IDIP (IP)
MKD BT: 4" CASCARA BARK SCRIBED "PC BT" W/ TAGS BRS
S71W 7.4'

PC2
FD 3/4" IDIP (IP)
MKD BT: 13" ALDER BARK SCRIBED "PC BT" W/ TAGS BRS
N54W 10.5'

PC3
FD 3/4" IDIP (IP)
MKD BT: 18" FIR SCRIBED "PC BT" W/ TAGS BRS N31W
3.3'

PC4
FD 3/4" IDIP (IP)
MKD BT: 11" ALDER BARK SCRIBED "PC BT" W/ TAGS BRS
N20E 9.4'

PC5
FD 3/4" IDIP (IP)
MKD BT: 11" ALDER BARK SCRIBED "PC BT" W/ TAGS BRS
N88W 14.4'

FILED

APR 9 1992

COUNTY SURVEYOR
DOUGLAS COUNTY, ORE.

PC6
FD 3/4" IDIP (IP)
MKD BT: 25" FIR SCRIBED "PC BT" W/ TAGS BRS N5W
5.2'

PC7
FD 3/4" IDIP (IP)
MKD BT: 6" MYRTLE SCRIBED "PC BT" W/ TAGS BRS N85E
22.9'

PC8
FD 3/4" IDIP (IP)
MKD BT: 6" MYRTLE SCRIBED "PC BT" W/ TAGS BRS N73W
10.7'

PC9
FD 3/4" IDIP (IP)
MKD BT: 6" CHERRY SCRIBED "PC BT" W/ TAGS BRS S9E
13.7'

PC10
SET 5/8" I. ROD W/ PLASTIC CAP MKD "STUNTZNER ENGR"
SET AT RECORD DISTANCES FROM PC9 AND PC11.
MKD BT: 5" MYRTLE SCRIBED "PC BT" W/ TAGS BRS N62W
12.4'

PC11
FD 3/4" IDIP (IP)
MKD BT: 4" MYRTLE SCRIBED "PC BT" W/ TAGS BRS N89E
22.1'

PC12
FD 3/4" IDIP (IP)
MKD BT: 18" MAPLE SCRIBED "PC BT" W/ TAGS BRS S68W
8.4'

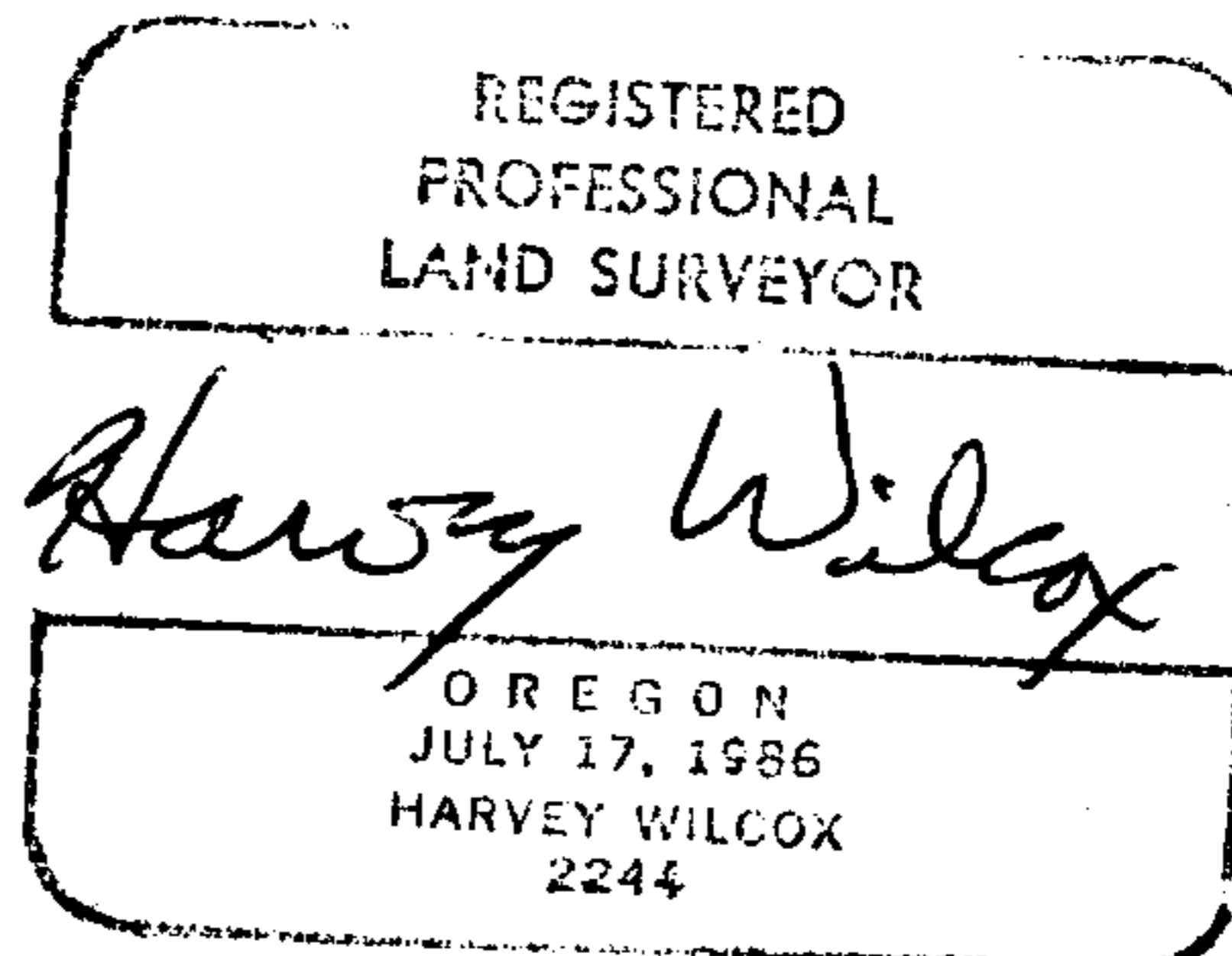
M 114-75

FILED

zh

APR 9 1992

COUNTY SURVEYOR
DOUGLAS COUNTY, ORE.



PC13
FD 3/4" IDIP (IP)
MKD BT: 14" TRIPLE MYRTLE SCRIBED "PC BT" W/ TAGS
BRS WEST 5.2'

PC14
SET 3 1/4" ALUM. CAP ON 3/4"X36" ALUM. ROD
MKD BT: 22" MAPLE SCRIBED "PC BT" W/ TAGS BRS N69W
30.2'

PC15
FD 3/4" IDIP (IP)
MKD BT: 4" HAZEL BARK SCRIBED "PC BT" W/ TAGS BRS
N48E 6.1'

PC16
FD 3/4" IDIP (IP)
MKD BT: 19" ALDER BARK SCRIBED "PC BT" W/ TAGS BRS
N3W 28.3'

PC17
FD 3/4" IDIP (IP)
MKD BT: 13" MAPLE SCRIBED "PC BT" W/ TAGS BRS N15E
5.2'

PC18
FD 3/4" IDIP (IP)
MKD BT: 28" MYRTLE SCRIBED "PC BT" W/ TAGS BRS
EAST 18.2'

PC19
FD 3/4" IDIP (NO RECORD)

MKD BT: 30" MYRTLE SCRIBED "PC BT" W/ TAGS BRS N59E
38.2'

SEE MAP M 114-75

C.S. File No. 63119-1