

SECTION CORNER 31,36,1,6

FOUND : DOUGLAS COUNTY BRASS CAP DATED 1990 - FLUSH WITH ROCK ROAD
22" FIR , N 70 E , 56.6' - CLOSED FACE
48" FIR , S 22-3/4 E , 30.6' - CLOSED FACE
40" OAK , S 6-3/4 E , 97.2' - CLOSED FACE
15" OAK , S 27-1/4 W , 18.5' - CLOSED FACE
11" OAK , N 1-1/2 W , 9.9' - CLOSED FACE

NOTE : CORNER FALLS IN MIDDLE OF ROAD AT GATE

SECTION CORNER 31,32,5,6

SET : 2" X 41" IRON PIPE WITH BRASS CAP
22" CEDAR , N 48 E , 24.4' - SCRIBED "T21SR5WS32 BT"
26" FIR , S 61 E , 19.7' - SCRIBED "T22SR5WS5 BT"
8" FIR , S 8 W , 38.4' - SCRIBED "T22SR5WS6 BT"
11" FIR , N 86 W , 13.1' - SCRIBED "T21SR5WS31 BT"

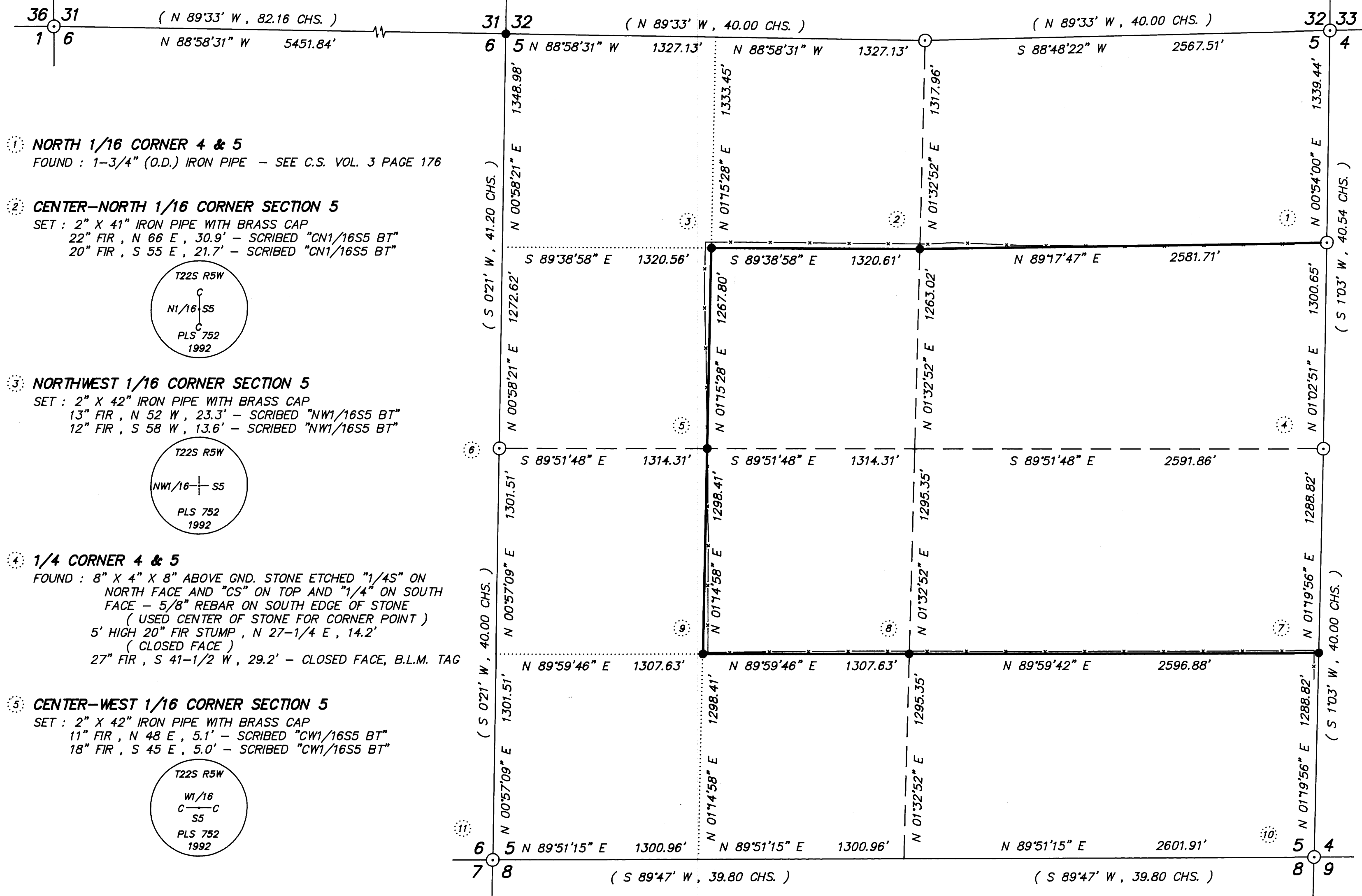
1/4 CORNER 32 & 5

FOUND : 1-1/4" IRON PIPE WITH DOUGLAS CO. BRASS CAP DATED 1959
19" FIR , S 72-1/2 E , 70.0' - CLOSED FACE, B.L.M. TAG
19" MADRONE , S 55 E , 44.1' - FACE ROTTED, NO VISIBLE SCRIBING, B.L.M. TAG
38" FIR B.T. TO NORTH NOW UPROOTED AND DOWN

SECTION CORNER 32,33,4,5

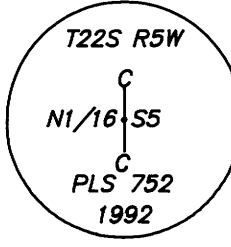
FOUND : 3/4" IRON PIPE
48" FIR , N 41-3/4 E , 12.2' - CLOSED FACE, B.L.M. TAG
17" FIR STUMP , S 22-1/4 E , 31.0' - CUT BELOW SCRIBING
15" FIR STUMP , S 37-1/4 W , 39.1' - CUT BELOW SCRIBING
17" FIR , N 51-1/2 W , 17.7' - CLOSED FACE

MAR 13 1992 JP

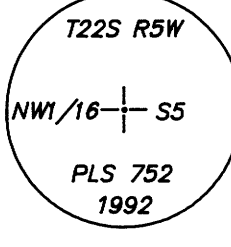


1 NORTH 1/16 CORNER 4 & 5
FOUND : 1-3/4" (O.D.) IRON PIPE - SEE C.S. VOL. 3 PAGE 176

2 CENTER-NORTH 1/16 CORNER SECTION 5
SET : 2" X 41" IRON PIPE WITH BRASS CAP
22" FIR , N 66 E , 30.9' - SCRIBED "CN1/16S5 BT"
20" FIR , S 55 E , 21.7' - SCRIBED "CN1/16S5 BT"

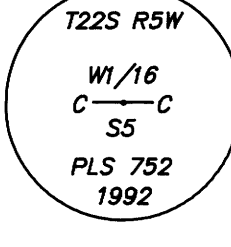


3 NORTHWEST 1/16 CORNER SECTION 5
SET : 2" X 42" IRON PIPE WITH BRASS CAP
13" FIR , N 52 W , 23.3' - SCRIBED "NW1/16S5 BT"
12" FIR , S 58 W , 13.6' - SCRIBED "NW1/16S5 BT"



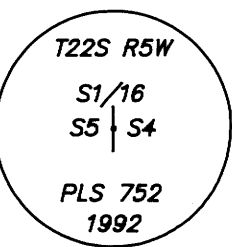
4 1/4 CORNER 4 & 5
FOUND : 8" X 4" X 8" ABOVE GND. STONE ETCHED "1/4S" ON NORTH FACE AND "CS" ON TOP AND "1/4" ON SOUTH FACE - 5/8" REBAR ON SOUTH EDGE OF STONE (USED CENTER OF STONE FOR CORNER POINT)
5' HIGH 20" FIR STUMP , N 27-1/4 E , 14.2' (CLOSED FACE)
27" FIR , S 41-1/2 W , 29.2' - CLOSED FACE, B.L.M. TAG

5 CENTER-WEST 1/16 CORNER SECTION 5
SET : 2" X 42" IRON PIPE WITH BRASS CAP
11" FIR , N 48 E , 5.1' - SCRIBED "CW1/16S5 BT"
18" FIR , S 45 E , 5.0' - SCRIBED "CW1/16S5 BT"



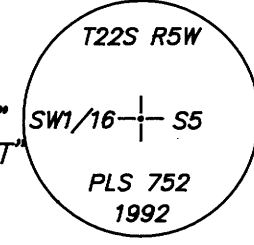
6 1/4 CORNER 5 & 6
FOUND : HAINES "T" IRON AND BRASS DISK
29" FIR , S 51-1/2 W , 26.4' - CLOSED FACE
40" FIR STUMP , S 34-1/2 W , 39.5' - WOOD ROTTED OUT BUT GOOD FACE ON BARK
CENTER OF ROOT HOLE OF BLOWN DOWN DOUBLE FIR , EAST , 18.5' - NO VISIBLE MARKS, BUT EVIDENCE OF AX WORK WHERE TREE HAD BEEN CHOPPED OPEN PREVIOUSLY

7 SOUTH 1/16 CORNER 4 & 5
SET : 2" X 41" IRON PIPE WITH BRASS CAP
13" FIR , N 48 E , 40.7' - SCRIBED "S1/16S4 BT"
14" FIR , S 75 W , 40.6' - SCRIBED "S1/16S5 BT"



8 CENTER-SOUTH 1/16 CORNER SECTION 5
SET : 5/8" REBAR WITH YELLOW PLASTIC CAP MKD. "PLS 752"
18" FIR , N 38 E , 8.1' - SCRIBED "CS1/16S5 BT"
24" FIR , S 51 W , 41.5' - SCRIBED "CS1/16SR BT"

9 SOUTHWEST 1/16 CORNER SECTION 5
SET : 2" X 41" IRON PIPE WITH BRASS CAP
12" FIR , N 20 W , 4.1' - SCRIBED "SW1/16S5 BT"
19" FIR , N 70 W , 10.5' - SCRIBED "SW1/16S5 BT"



10 SECTION CORNER 4,5,8,9
FOUND : 3/4" REBAR
24" FIR , N 24 E , 49.1' - CLOSED FACE
12" FIR STUMP , S 30-1/4 E , 54.5' - VISIBLE SCRIBE
22" FIR , S 41-1/4 W , 103.0' - CLOSED FACE
10" OAK , N 5 W , 102.1' - CLOSED FACE
22" ROTTED FIR STUMP , N 41 W , 32.8' - SCRIBE VISIBLE

11 SECTION CORNER 5,6,7,8
FOUND : 1-1/4" IRON PIPE WITH DOUGLAS CO. BRASS CAP DATED 1958
15" FIR , N 2-1/2 E , 139.6' - CLOSED FACE
22" FIR , S 76-1/2 W , 133.7' - CLOSED FACE
21" FIR , N 59-3/4 W , 119.7' - CLOSED FACE
NOTE : 7/8" IRON ROD OF UNKNOWN ORIGIN BEARS S 20°08'26" E , 17.64'

REGISTERED PROFESSIONAL LAND SURVEYOR
DONALD L. PEEL
OREGON JULY 8, 1988
DONALD L. PEEL 752

- NARRATIVE -
THIS SURVEY WAS MADE IN DECEMBER, 1991 THROUGH FEBRUARY, 1992 BY DONALD L. PEEL OF PEEL BAKER LAND SURVEYING, INC., 1385 OAK ST. - SUITE 3, EUGENE, OREGON. THE PURPOSE OF THIS SURVEY WAS TO LOCATE AND MARK SOME OF THE PROPERTY LINES OF THE LAND OWNED BY WEYERHAEUSER CO. IN SECTION 5, T22S, R5W, W.M., A WILD T1000 THEOMAT AND DISS E.D.M. WERE USED TO PERFORM THIS SURVEY. BEARINGS WERE BASED ON A SOLAR OBSERVATION. RANDOM TRANSIT TRAVERSES WERE RUN BETWEEN FOUND CORNERS FOR CONTROL. A CLOSED RANDOM TRAVERSE WAS RUN AS NEAR AS POSSIBLE TO THE PROPERTY LINES THAT WERE TO BE MARKED. OFFSETS FROM THE RANDOM TRAVERSE LINE TO THE TRUE PROPERTY LINE WERE CALCULATED AND USED TO DETERMINE THE POSITION OF THE TRUE PROPERTY LINE. THE TRUE PROPERTY LINE WAS MARKED IN THE FIELD BY BLAZING TREES (BLAZES NOTCHED AND PAINTED RED) ON BOTH SIDES OF THE TRUE LINE. THE SOUTH 1/4 CORNER OF SEC. 5, NORTHWEST CORNER SEC. 5 AND THE NORTH 1/4 CORNER OF SEC. 6 WERE SEARCHED FOR BUT NOT FOUND. THE NORTH, WEST AND EAST 1/4 CORNERS OF SEC. 5, NORTHEAST, SOUTHEAST AND SOUTHWEST CORNERS OF SEC. 5, THE NORTHWEST CORNER OF SEC. 6 AND THE NORTH 1/16 CORNER BETWEEN SECS. 4 AND 5 WERE ALL FOUND AND USED FOR CONTROL. THE NORTHWEST CORNER OF SEC. 5 WAS SET BY SINGLE PROPORTION. THE POSITION FOR THE SOUTH 1/4 CORNER SEC. 5 WAS DETERMINED (BUT NOT SET) AT MIDPOINT BETWEEN THE SOUTHEAST AND SOUTHWEST SECTION CORNERS. THE SOUTH 1/16 CORNER 4 AND 5 WAS SET AT MIDPOINT BETWEEN THE EAST 1/4 CORNER AND THE SOUTHEAST SECTION CORNER. THE POSITION FOR THE CENTER 1/4 CORNER WAS DETERMINED (BUT NOT SET) AT THE POINT OF INTERSECTION OF THE NORTH-SOUTH AND EAST-WEST CENTERLINES. THE CENTER-SOUTH 1/16 CORNER WAS SET AT MIDPOINT BETWEEN THE SOUTH 1/4 AND CENTER 1/4 CORNERS. THE CENTER-WEST 1/16 CORNER WAS SET AT MIDPOINT BETWEEN THE WEST 1/4 AND THE CENTER 1/4 CORNERS. THE CENTER-NORTH 1/16 CORNER WAS SET ON LINE BETWEEN THE NORTH 1/4 AND CENTER 1/4 CORNERS AT THE PROPORTIONATE DISTANCE. THE WEST 1/16 32 & 5, WEST 1/16 5 & 8 AND THE SOUTH 1/16 5 & 6 WERE MIDPOINT POSITIONS (NOT SET). THE POSITION FOR THE NORTH 1/16 5 & 6 WAS ON LINE BETWEEN THE WEST 1/4 CORNER AND THE NORTHWEST SECTION CORNER AT PROPORTIONATE DISTANCE (NOT SET). THE NORTHWEST 1/16 CORNER WAS SET AT THE POINT OF INTERSECTION OF THE NORTH-SOUTH AND EAST-WEST CENTERLINES OF THE NORTHWEST 1/4. THE SOUTHWEST 1/16 CORNER WAS SET AT THE POINT OF INTERSECTION OF THE NORTH-SOUTH AND EAST-WEST CENTERLINES OF THE SOUTHWEST 1/4. ALL CORNERS SET IN THIS SURVEY WERE MONUMENTED AS SHOWN ON THIS PLAT. FOR ALL BEARING TREES MARKED IN THIS SURVEY, THE DISTANCE WAS MEASURED FROM THE CORNER TO A "W" NAIL IN THE LOWER BLAZE AND THE BEARINGS WERE MAGNETIC, VARIATION 20.

BASIS OF BEARING : SOLAR OBSERVATION
SCALE : 1" = 500'
○ CORNERS FOUND
● CORNERS SET THIS SURVEY
— PROPERTY LINE BLAZED
() RECORD DATA G.L.O.

SURVEY IN SECTION 5, T22S, R5W, W.M. DOUGLAS COUNTY, OREGON FOR WEYERHAEUSER COMPANY BY PEEL BAKER LAND SURVEYING, INC. 1385 OAK ST. - SUITE 3, EUGENE, OREGON FEBRUARY 3, 1992

COUNTY SURVEYORS FILE DATA DO NOT REMOVE FROM OFFICE

M114-60

M114-60