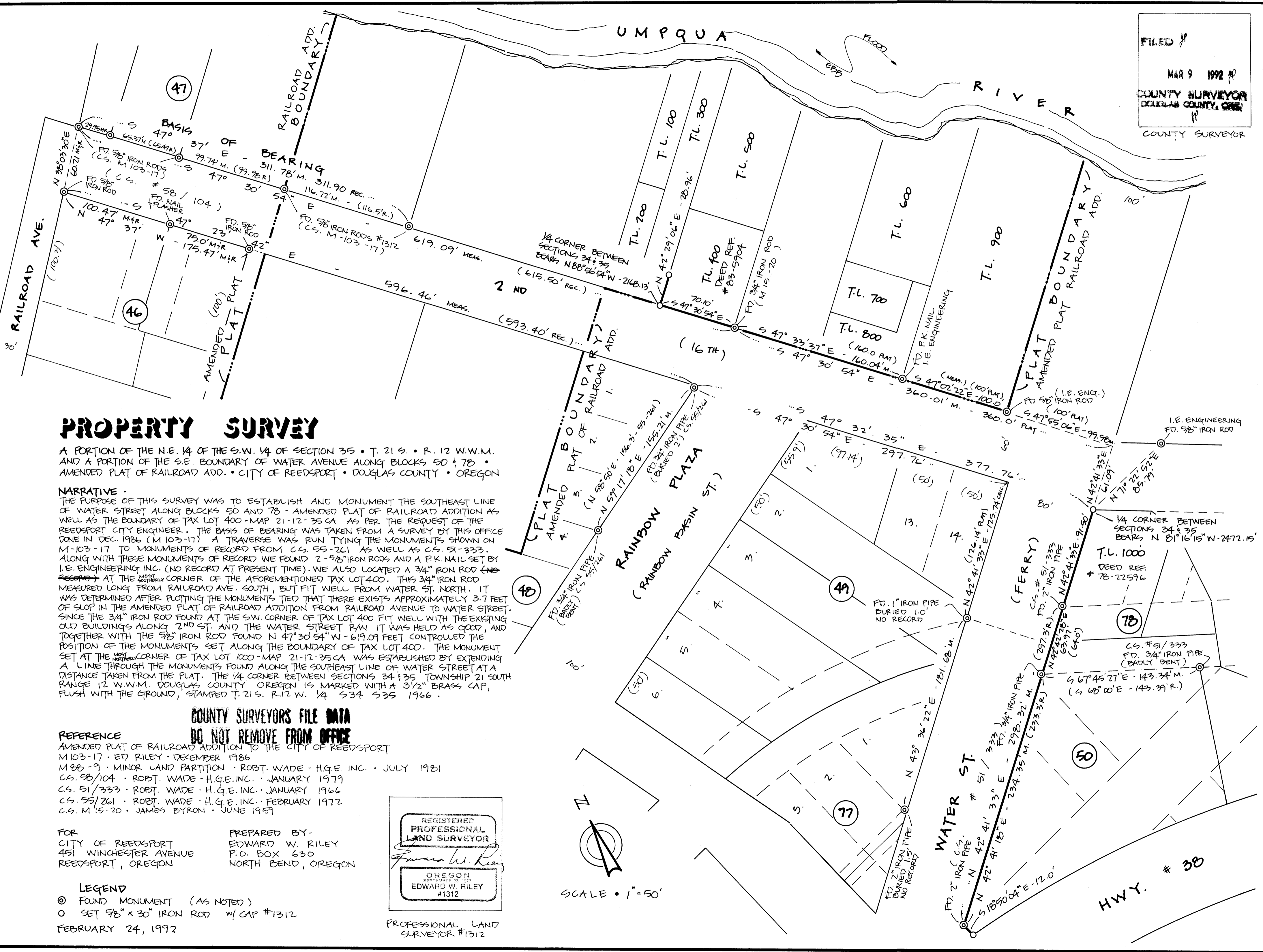


FILED
 MAR 9 1992
 COUNTY SURVEYOR
 DOUGLAS COUNTY, OREGON
 COUNTY SURVEYOR



PROPERTY SURVEY

A PORTION OF THE N.E. 1/4 OF THE S.W. 1/4 OF SECTION 35 • T. 21 S. • R. 12 W.W.M. AND A PORTION OF THE S.E. BOUNDARY OF WATER AVENUE ALONG BLOCKS 50 & 78 • AMENDED PLAT OF RAILROAD ADD. • CITY OF REEDSPORT • DOUGLAS COUNTY • OREGON

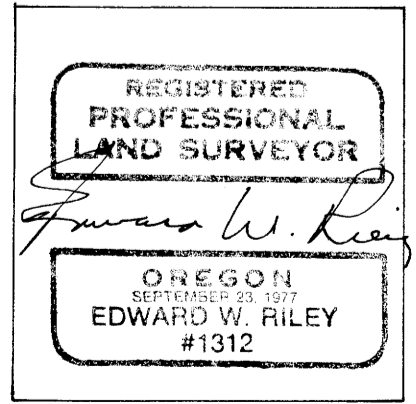
NARRATIVE
 THE PURPOSE OF THIS SURVEY WAS TO ESTABLISH AND MONUMENT THE SOUTHEAST LINE OF WATER STREET ALONG BLOCKS 50 AND 78 - AMENDED PLAT OF RAILROAD ADDITION AS WELL AS THE BOUNDARY OF TAX LOT 400 - MAP 21-12-35 CA AS PER THE REQUEST OF THE REEDSPORT CITY ENGINEER. THE BASIS OF BEARING WAS TAKEN FROM A SURVEY BY THIS OFFICE DONE IN DEC. 1986 (M 103-17) A TRAVERSE WAS RUN TYING THE MONUMENTS SHOWN ON M-103-17 TO MONUMENTS OF RECORD FROM C.S. 55-261 AS WELL AS C.S. 51-333. ALONG WITH THESE MONUMENTS OF RECORD WE FOUND 2-5/8" IRON RODS AND A P.K. NAIL SET BY I.E. ENGINEERING INC. (NO RECORD AT PRESENT TIME). WE ALSO LOCATED A 3/4" IRON ROD (NO RECORD) AT THE SOUTHERLY CORNER OF THE AFOREMENTIONED TAX LOT 400. THIS 3/4" IRON ROD MEASURED LONG FROM RAILROAD AVE. SOUTH, BUT FIT WELL FROM WATER ST. NORTH. IT WAS DETERMINED AFTER PLOTTING THE MONUMENTS TIED THAT THERE EXISTS APPROXIMATELY 3.7 FEET OF SLOP IN THE AMENDED PLAT OF RAILROAD ADDITION FROM RAILROAD AVENUE TO WATER STREET. SINCE THE 3/4" IRON ROD FOUND AT THE S.W. CORNER OF TAX LOT 400 FIT WELL WITH THE EXISTING OLD BUILDINGS ALONG 2ND ST. AND THE WATER STREET R/W IT WAS HELD AS GOOD, AND TOGETHER WITH THE 5/8" IRON ROD FOUND N 47° 30' 54" W - 619.09 FEET CONTROLLED THE POSITION OF THE MONUMENTS SET ALONG THE BOUNDARY OF TAX LOT 400. THE MONUMENT SET AT THE SOUTHERLY CORNER OF TAX LOT 1000 - MAP 21-12-35 CA WAS ESTABLISHED BY EXTENDING A LINE THROUGH THE MONUMENTS FOUND ALONG THE SOUTHEAST LINE OF WATER STREET AT A DISTANCE TAKEN FROM THE PLAT. THE 1/4 CORNER BETWEEN SECTIONS 34 & 35 TOWNSHIP 21 SOUTH RANGE 12 W.W.M. DOUGLAS COUNTY OREGON IS MARKED WITH A 3 1/2" BRASS CAP, FLUSH WITH THE GROUND, STAMPED T. 21 S. R. 12 W. 1/4 S34 S35 1966.

**COUNTY SURVEYORS FILE DATA
 DO NOT REMOVE FROM OFFICE**

REFERENCE
 AMENDED PLAT OF RAILROAD ADDITION TO THE CITY OF REEDSPORT
 M 103-17 • ED RILEY • DECEMBER 1986
 M 88-9 • MINOR LAND PARTITION • ROBT. WADE - H.G.E. INC. • JULY 1981
 C.S. 58/104 • ROBT. WADE - H.G.E. INC. • JANUARY 1979
 C.S. 51/333 • ROBT. WADE - H.G.E. INC. • JANUARY 1966
 C.S. 55/261 • ROBT. WADE - H.G.E. INC. • FEBRUARY 1972
 C.S. M 15-20 • JAMES BYRON • JUNE 1959

FOR
 CITY OF REEDSPORT
 451 WINCHESTER AVENUE
 REEDSPORT, OREGON

PREPARED BY -
 EDWARD W. RILEY
 P.O. BOX 630
 NORTH BEND, OREGON



LEGEND
 ⊙ FOUND MONUMENT (AS NOTED)
 ○ SET 5/8" x 30" IRON ROD w/ CAP #1312
 FEBRUARY 24, 1992

