

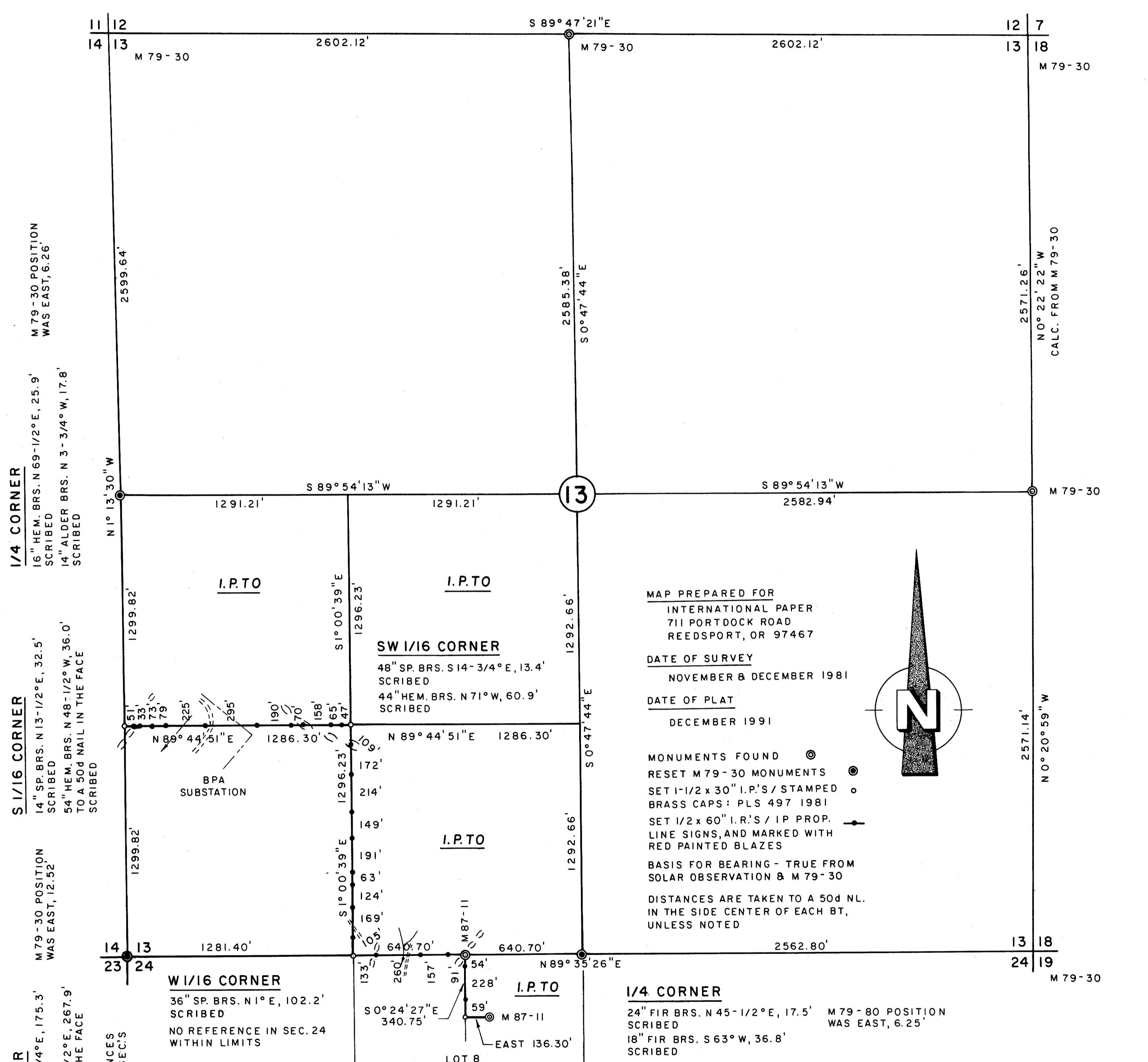
PROPERTY SURVEYORS FILE DATA
DO NOT REMOVE FROM OFFICE

PROPERTY SURVEY FOR INTERNATIONAL PAPER CO.

SECTIONS 13 & 24, T21S, R12W
SCALE: 1" = 400'

FIELD P
PROPERTY SURVEYOR
RICHARD J. HINTZ
497

M 14 - 22



MAP PREPARED FOR
INTERNATIONAL PAPER
711 PORT DOCK ROAD
REEDSPORT, OR 97467

DATE OF SURVEY
NOVEMBER & DECEMBER 1981

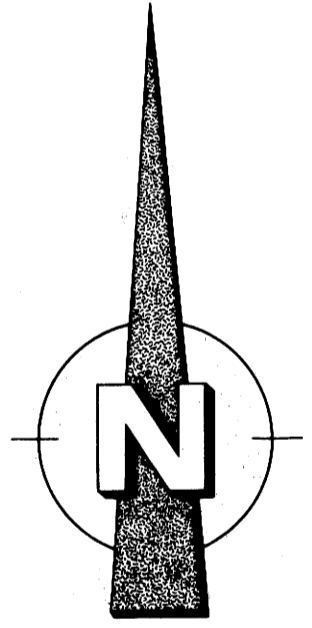
DATE OF PLAT
DECEMBER 1991

MONUMENTS FOUND

- RESET M 79-30 MONUMENTS
- SET 1-1/2 x 30" I.P.'S / STAMPED BRASS CAPS: PLS 497 1981
- SET 1/2 x 60" I.R.'S / IP PROP. LINE SIGNS, AND MARKED WITH RED PAINTED BLAZES

BASIS FOR BEARING - TRUE FROM SOLAR OBSERVATION & M 79-30

DISTANCES ARE TAKEN TO A 50d NL. IN THE SIDE CENTER OF EACH BT, UNLESS NOTED



NARRATIVE

THE PURPOSE OF THIS SURVEY WAS TO SUBDIVIDE THE SOUTHWEST QUARTER (1/4) OF SECTION 13, AND TO ESTABLISH A PROPERTY CORNER ALONG THE NORTH-SOUTH CENTERLINE OF LOT 8, SECTION 24. MY SURVEY M 79-30, FOR CHAMPION INTERNATIONAL CORP. AND INTERNATIONAL PAPER CO., PROVIDED THE BASIS FOR THIS SURVEY. THE SOUTHWEST CORNER OF SECTION 13 WAS PROPORTIONED INCORRECTLY DURING THE COURSE OF MY SURVEY, M 79-30. THE SOUTHWEST SECTION CORNER, SOUTH AND WEST QUARTER (1/4) CORNERS WERE RESET IN THEIR CORRECT POSITIONS IN ORDER TO RECALCULATE THE SUBDIVISION OF THE SECTION, AND THE SOUTHWEST QUARTER (1/4) IN PARTICULAR. A RANDOM CONTROL TRAVERSE WAS RUN BETWEEN THE ABOVE MENTIONED CORNERS IN ORDER TO SET THE SOUTHWEST SIXTEENTH (SW 1/16), SOUTH AND WEST 1/16 CORNERS. OFFSETS FROM THE RANDOM TRAVERSE TO THE TRUE PROPERTY LINES WERE CALCULATED, AND USED TO DETERMINE THE POSITION OF THE TRUE LINES. THE TRUE PROP. LINES WERE MARKED WITH RED PAINTED BLAZES ON BOTH SIDES OF THE LINE. 1/2 x 60" IRON RODS WERE SET AS SHOWN ON THE ACCOMPANYING PLAT, WITHIN ONE FOOT OF THE TRUE LINE. INTERNATIONAL PAPER CO. ALUMINUM PROPERTY LINE SIGNS WERE ATTACHED TO THE IRON RODS, AND EACH ROD WAS REFERENCED BY AN UNPAINTED ALUMINUM TAG ATTACHED TO A NEARBY TREE. THIS SURVEY WAS MADE IN ACCORDANCE WITH THE 1973 BLM MANUAL OF SURVEY INSTRUCTIONS.

SECTION CORNER
36" FIR BRS. N 87-3/4° E, 175.3' SCRIBED
52" SP. BRS. S 59-1/2° E, 267.9' TO A 50d NAIL IN THE FACE SCRIBED
NO OTHER REFERENCES WITHIN LIMITS IN SEC'S 14 & 23

S 1/16 CORNER
14" SP. BRS. N 13-1/2° E, 32.5' SCRIBED
54" HEM. BRS. N 48-1/2° W, 36.0' TO A 50d NAIL IN THE FACE SCRIBED

1/4 CORNER
16" HEM. BRS. N 69-1/2° E, 25.9' SCRIBED
14" ALDER BRS. N 3-3/4° W, 17.8' SCRIBED

M 79-30 POSITION WAS EAST, 6.26'

W 1/16 CORNER
36" SP. BRS. N 1° E, 102.2' SCRIBED
NO REFERENCE IN SEC. 24 WITHIN LIMITS

SW 1/16 CORNER
48" SP. BRS. S 14-3/4° E, 13.4' SCRIBED
44" HEM. BRS. N 71° W, 60.9' SCRIBED

1/4 CORNER
24" FIR BRS. N 45-1/2° E, 17.5' SCRIBED
18" FIR BRS. S 63° W, 36.8' SCRIBED
M 79-80 POSITION WAS EAST, 6.25'

REGISTERED PROFESSIONAL LAND SURVEYOR
Richard J. Hintz
OREGON MAY 15, 1960
RICHARD J. HINTZ 497

RICHARD J. HINTZ
1890 N. 14 TH ST.
COOS BAY, OREGON

22 - #11 W