

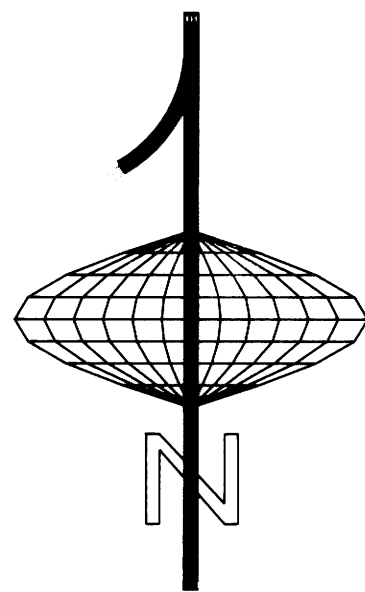
LOT LINE ADJUSTMENT
IN LOTS 7 & 8, BLOCK 1, FAIRACRES
IN THE NE 1/4 OF SECTION 36, T26S, R6W, WM
DOUGLAS COUNTY, OREGON
NOVEMBER, 1991
for
DAVID A. FEIGEL ESTATE

LEGEND

- Set 5/8" x 30" Iron Rod w/plastic cap marked: 'AA SURVEYING'.
- Found 5/8" Iron Rod or as noted.
- (R1) Record Information per C.S. 55/59.
- (R2) Record Information per C.S. 55/210.

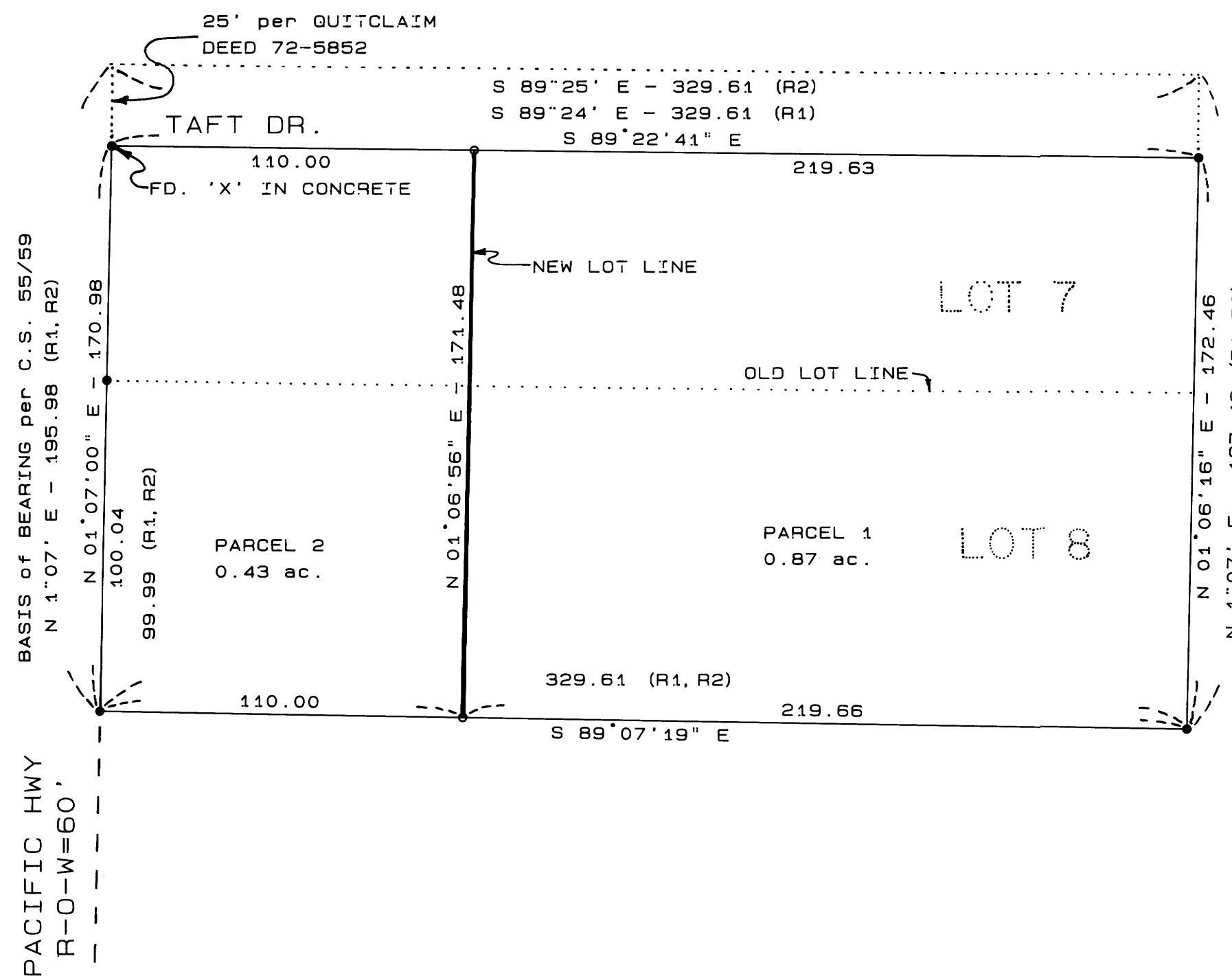
NARRATIVE:

The purpose of this survey is to adjust the common Lot Line of Lots 7 and 8, Block 1, Fairacres, as recorded in the County Surveyor's Office, Douglas County, Oregon. The boundary was established from found monuments. The new monuments were set on line between the found monuments as shown.



REGISTERED
PROFESSIONAL
LAND SURVEYOR
Mark A. Heimburger
OREGON
JULY 18, 1987
MARK A. HEIMBURGER
2287

SCALE 1 inch = 40 feet



Keith L. Cubie 12/10/91
PLANNING DIRECTOR DATE

PLANNING FILE No. 91-278

21 - 411 W

M 114 - 17