

COUNTY SURVEYORS FILE DATA

DO NOT REMOVE FROM OFFICE

BOUNDARY LINE ADJUSTMENT

for

CITY of ROSEBURG and YMCA

IN THE SE 1/4 OF SECTION 14, T27S, R6W, WM

OCTOBER, 1991

LEGEND

- SET 5/8"x30" IRON ROD  
w/PLASTIC CAP MARKED:  
"AA SURVEY"
- FOUND MONUMENT AS NOTED
- △ CALCULATED POINT
- (R/I) RECORD INFORMATION per M105-38

*John F. Stuter* 11/25/91  
 COMMUNITY DEVELOPEMENT DIRECTOR DATE

Planning File #LLA 91-11

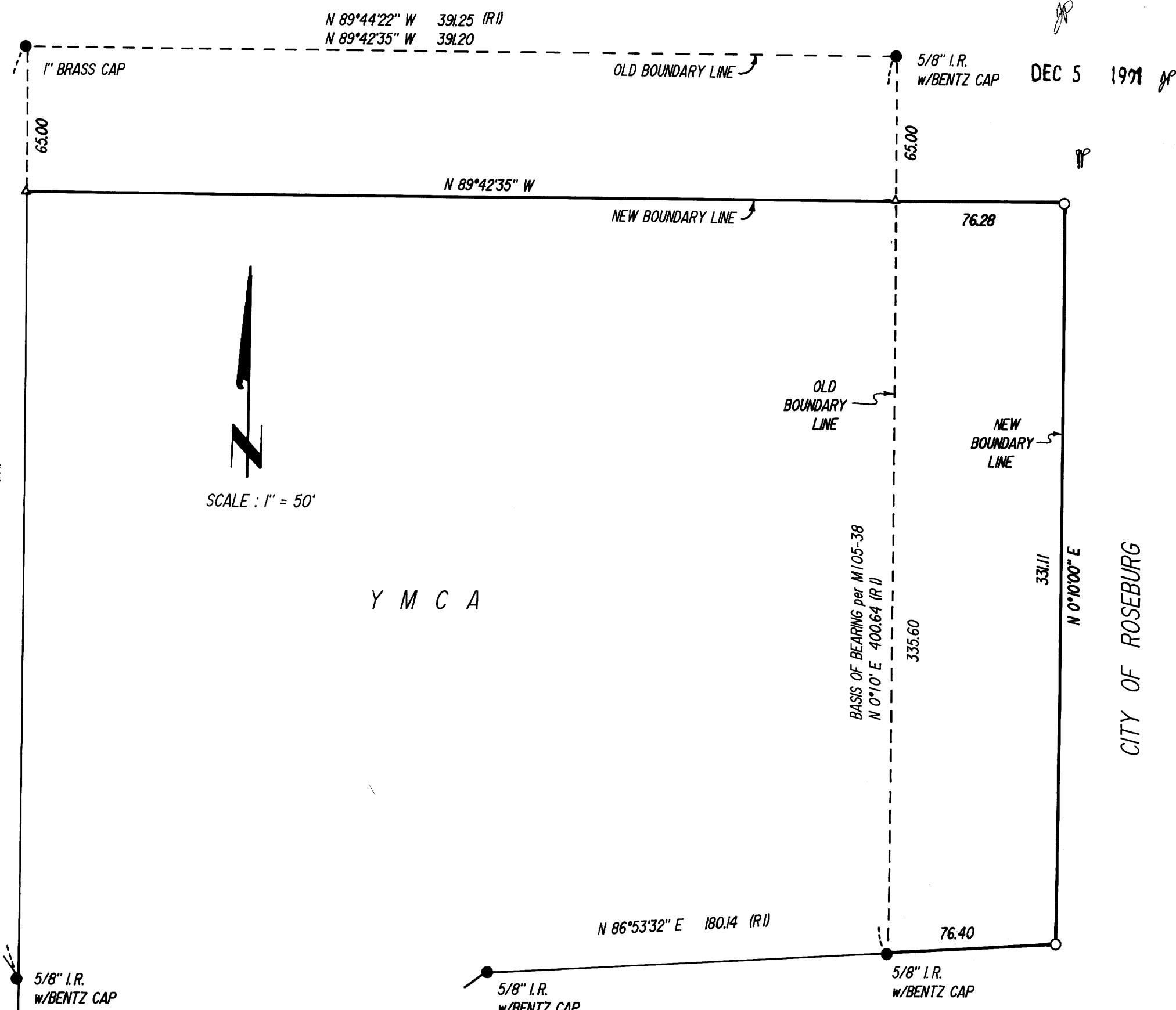
1/2" I.P.  
 SE COR LOT 2, BLOCK 1  
 CEDAR VALE SUB.

REGISTERED  
 PROFESSIONAL  
 LAND SURVEYOR

*Mark A. Heimbarger*

OREGON  
 JULY 16, 1957  
 MARK A. HEIMBURGER  
 2287

MAP PREPARED BY:  
 AA SURVEYING SERVICE, INC.  
 2566 N. STEPHENS  
 ROSEBURG, OR 97470



DEC 5 1991

Y M C A

CITY OF ROSEBURG

M 114 - 14

M 114 - 14