

**SURVEY FOR JERRY HARRIS**

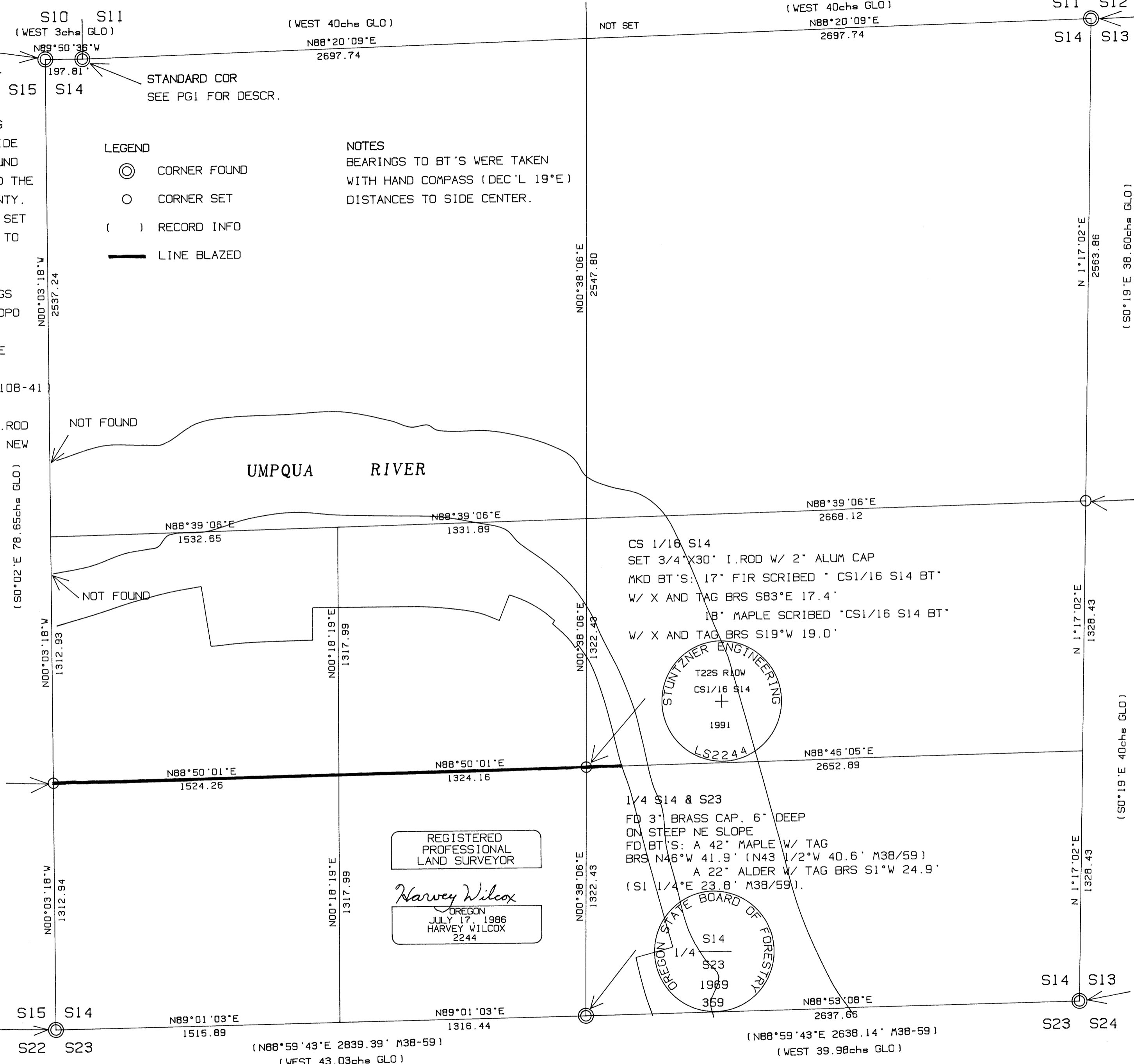
LOCATED IN SECTION 14, T.22 S., R.10 W., W.M. DOUGLAS COUNTY, OREGON

SCALE 1"=400' DATE AUG 1991

**SECTION 14 NARRATIVE**  
THE PURPOSE OF THIS SURVEY WAS TO SET THE CORNERS AND MARK THE LINES SHOWN FOR LOGGING PURPOSES. I FOUND THE CORNERS ON THE WEST SIDE OF THE SECTION AS DESCRIBED ON PAGE 1. I FOUND THE S1/4 AS PROPORTIONED IN BY THE STATE AND THE ORIG. SE CORNER AS REESTABLISHED BY THE COUNTY. I THEN TRAVERSED NORTH TO THE 1/4 CORNER AS SET BY THIS OFFICE (M108-41). I CONTINUED NORTH TO THE NE SECTION CORNER WHICH I REESTABLISHED FROM ORIGINAL BT'S. I FOUND 3 OF THE 4 BT'S NOW ROTTEN SNAGS. THE RELATION OF THESE SNAGS MATCHES RECORD AND PUTS THE CORNER AT THE TOPO CALLS TO THE NORTH, SOUTH AND EAST. AFTER DISCUSSION WITH RON STUNTZNER WE DECIDED THE LOCATION OF THIS CORNER CAST A DOUBT ON THE POSITION OF THE 1/4 CORNER AS SET BY RON (M108-41) SO WE REESTABLISHED THE 1/4 CORNER AT THE PROPORTIONATE POSITION. WE PULLED THE OLD 1. ROD AND CHOPPED OFF THE BLAZES ON THE BT'S. THE NEW 1/4 BRS N64°08'08"E 147.67' FROM THE OLD. WE DID NOT FIND THE N1/4 SO I PROPORTIONED IT IN. THE ORIGINAL PLAT SHOWS THAT THIS CORNER WAS INTENDED TO BE STANDARD WITH THE 3 CHAINS THROWN TO THE WEST. THIS GAVE ME THE CONTROL I NEEDED TO SUBDIVIDE THE SECTION AS PER THE BLM MANUAL.

- LEGEND**
- ⊙ CORNER FOUND
  - CORNER SET
  - ( ) RECORD INFO
  - LINE BLAZED

**NOTES**  
BEARINGS TO BT'S WERE TAKEN WITH HAND COMPASS (DEC'L 19°E) DISTANCES TO SIDE CENTER.



**S1/16 S14 & S15**  
SET 3/4"X30" I. ROD W/ 2" ALUM CAP  
MKD BT'S: 17" FIR SCRIBED °CS1/16  
S14 BT° W/ X AND TAG BRS S83°E 17.4'  
18" MAPLE SCRIBED °CS1/16  
S15 BT° W/ X AND TAG BRS S19°W 19.0'

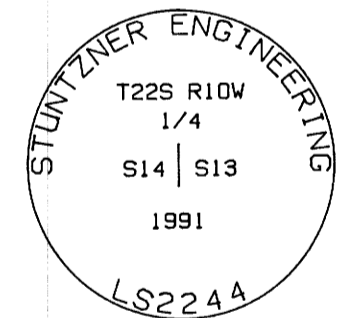
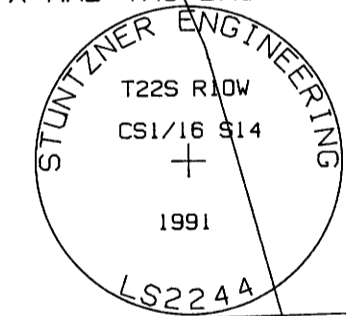
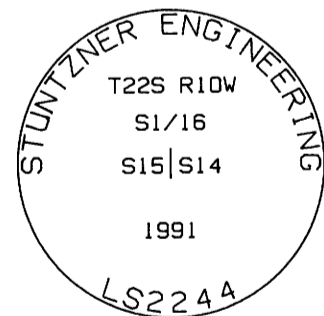
**CS 1/16 S14**  
SET 3/4"X30" I. ROD W/ 2" ALUM CAP  
MKD BT'S: 17" FIR SCRIBED °CS1/16 S14 BT°  
W/ X AND TAG BRS S83°E 17.4'  
18" MAPLE SCRIBED °CS1/16 S14 BT°  
W/ X AND TAG BRS S19°W 19.0'

**1/4 S14 & S23**  
FD 3" BRASS CAP. 6" DEEP  
ON STEEP NE SLOPE  
FD BT'S: A 42" MAPLE W/ TAG  
BRS N46°W 41.9' (N43 1/2°W 40.6' M38/59)  
A 22" ALDER W/ TAG BRS S1°W 24.9'  
(S1 1/4°E 23.8' M38/59).

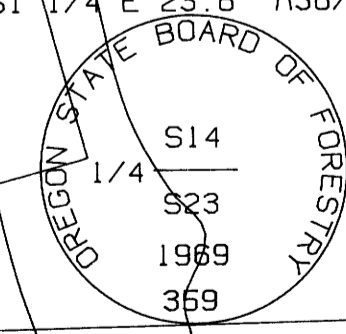
**SECTION COR**  
SET 3/4"X30" I. ROD W/  
2" ALUM CAP. FLUSH  
FD BT'S: FIR SNAG BRS  
N21°W 46.2' (ORIG).  
FIR SNAG BRS  
S80°E 57.4' (ORIG).  
FIR SNAG BRS  
N83°E 57.4' (ORIG)

**1/4 S13 & S14**  
SET 3/4"X30" I. ROD  
W/ ALUM CAP S69°E  
AND 8.5' FROM A 70"  
FIR. SEE NARRATIVE  
FOR MONUMENT REMOVED.  
MKD BT'S: 15" FIR  
SCRIBED °1/4 S14 BT°  
W/ X AND TAG BRS  
S81°W 19.3'  
15" ALDER  
BARK SCRIBED °1/4 S13  
BT° W/ X AND TAG BRS  
S27°E 43.4'  
17" ALDER  
BARK SCRIBED °1/4 S13  
BT° W/ X AND TAG BRS  
S27°E 43.4'  
51" FIR  
SCRIBED °1/4 S14 BT°  
W/ X AND TAG BRS  
S16°W 43.3'

**SECTION COR**  
FD 1 1/4" OD 1. PIPE W/  
SIGN ALONGSIDE  
FD BT'S: 30" FIR BRS  
N75°E 24.0'  
12" FIR BRS  
S47°E 35.2'  
10" FIR BRS  
N27°W 37.9'  
10" FIR BRS  
S44°W 44.7'



REGISTERED  
PROFESSIONAL  
LAND SURVEYOR  
*Harvey Wilcox*  
OREGON  
JULY 17, 1986  
HARVEY WILCOX  
2244



STUNTZNER ENGINEERING  
T22S R10W  
S11|S12  
S14|S13  
1991  
LS2244  
FILED  
OCT 18 1991  
COUNTY SURVEYOR  
DOUGLAS COUNTY, OREG.