

SURVEY TO SET LOT CORNERS
LOTS 17, 18, 19 & 20, BLOCK 25
AMENDED PLAT OF THE TOWN OF SUTHERLIN
IN THE SE 1/4 OF SEC. 17, T.25S..R.5W..W.M.

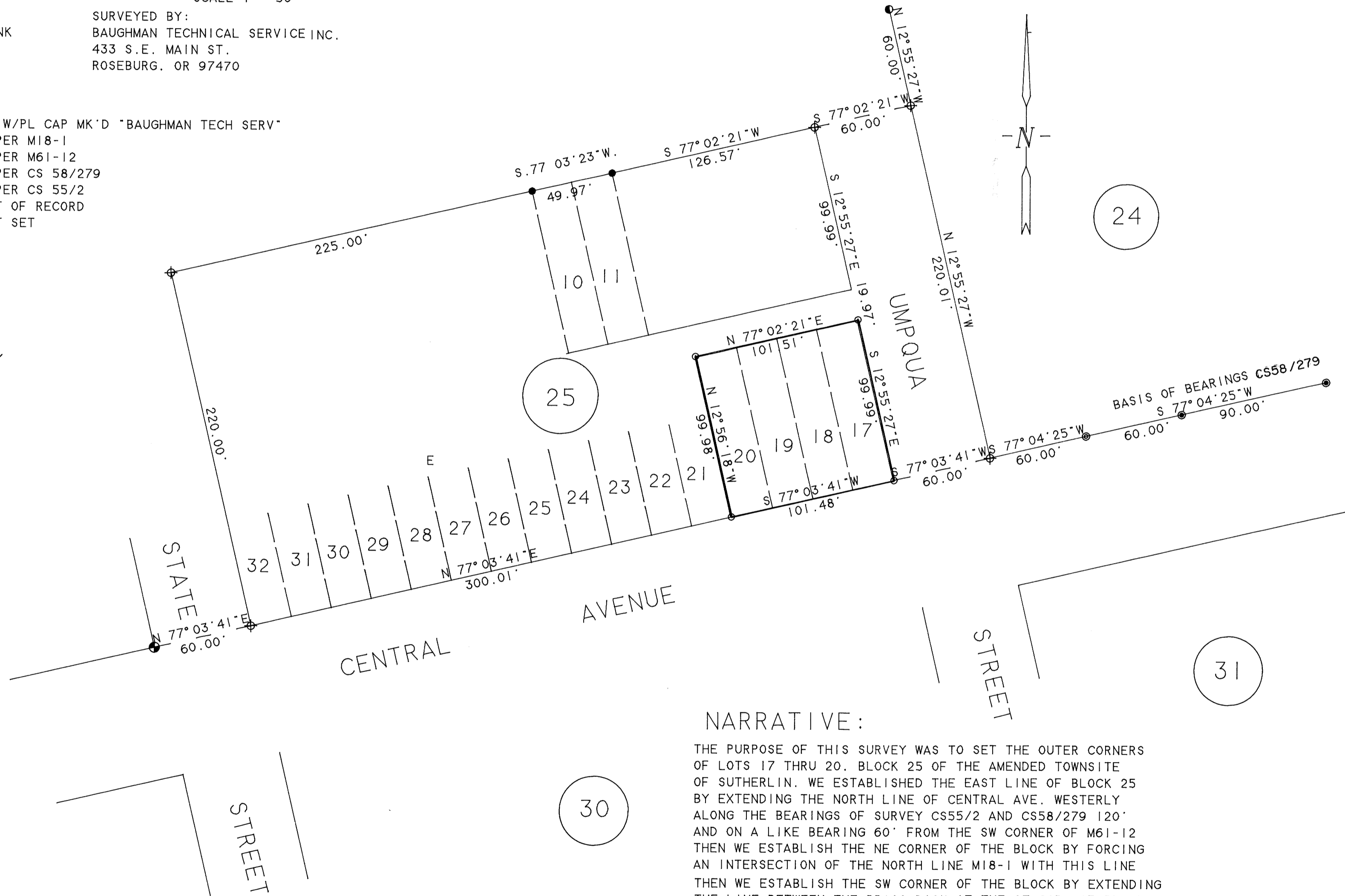
AUGUST 1991 SCALE 1" = 50'
SURVEYED FOR: SOUTH UMPQUA STATE BANK
445 S.E. MAIN ST.
ROSEBURG, OR 97470
SURVEYED BY: BAUGHMAN TECHNICAL SERVICE INC.
433 S.E. MAIN ST.
ROSEBURG, OR 97470

LEGEND:

- - SET 5/8"X30" I.R. W/PL CAP MK'D "BAUGHMAN TECH SERV"
- - FD. 3/4" I.P. AS PER M18-1
- ⊙ - FD. 5/8" BOLT AS PER M61-12
- ⊗ - FD. 5/8" I.R. AS PER CS 58/279
- ⊕ - FD. 1/2" I.P. AS PER CS 55/2
- ⊛ - FD. BRASS DISC NOT OF RECORD
- ⊕ - CALCULATED BUT NOT SET

REGISTERED
PROFESSIONAL
LAND SURVEYOR

Glenn S. Baughman
OREGON
JULY 11, 1988
GLENN S. BAUGHMAN
536



FILED
SEP 5 1991
COUNTY SURVEYOR
DOUGLAS COUNTY, ORE.

NARRATIVE:

THE PURPOSE OF THIS SURVEY WAS TO SET THE OUTER CORNERS OF SUTHERLIN. WE ESTABLISHED THE EAST LINE OF BLOCK 25 BY EXTENDING THE NORTH LINE OF CENTRAL AVE. WESTERLY ALONG THE BEARINGS OF SURVEY CS55/2 AND CS58/279 120' AND ON A LIKE BEARING 60' FROM THE SW CORNER OF M61-12 THEN WE ESTABLISH THE NE CORNER OF THE BLOCK BY FORCING AN INTERSECTION OF THE NORTH LINE M18-1 WITH THIS LINE THEN WE ESTABLISH THE SW CORNER OF THE BLOCK BY EXTENDING THE LINE BETWEEN THE BRASS DISK AT THE SE COR. OF BLOCK 26 AND THE SE COR. OF BLOCK 25. WE THEN PRORATED THE LOTS IN BY USING M18-1 AS THE CONTROL FOR THE NW COR. OF THE BLOCK WITH A DISTANCE DISTANCE INTERSECTION WITH THE S.W. CORNER OF THE BLOCK. THE FIELD WORK WAS PERFORMED BY L. FANNING AND A. FANNING USING A SET4 TOTAL STATION COMPUTATIONS AND DRAFTING BY G. BAUGHMAN