

PROPERTY SURVEY
FOR

NED LAMBERTON

LOCATED IN SECTIONS 12 & 13 T22S. R9W AND SECTION 7 T22S. R8W. W.M.

FILED *JP*

SEP 4 1991 *JP*

COUNTY SURVEYOR
DOUGLAS COUNTY, ORE.
JP

NARRATIVE

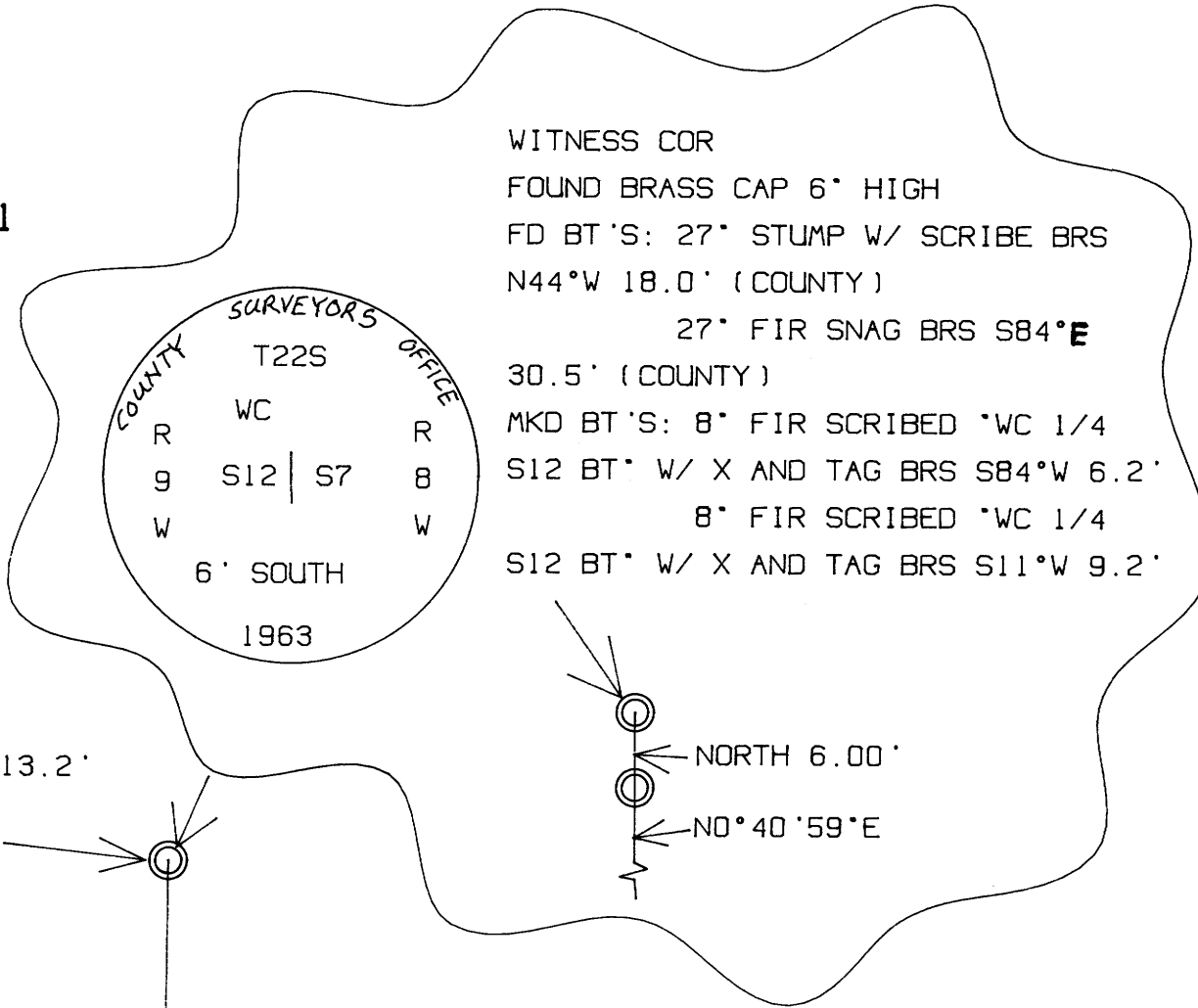
THE PURPOSE OF THIS SURVEY WAS TO MARK THE LINES AND SET THE CORNERS SHOWN FOR PROPERTY APPRAISAL. THE DLC LINES WERE RAN IN 1856. IN 1914 F.J. COLE RETRACED THE NORTH LINE AND SUBDIVIDED THE DLC. I FOUND THE NE COR. OF THE DLC AS PERPETUATED BY BLM IN 1963. I WAS UNABLE TO FIND THE N. ANGLE POINT OF THE DLC BUT I FOUND AND ACCEPTED THE POINT SET ON THE NORTH LINE BY COLE. I CALCULATED THE N. ANGLE POINT BY USING A COMPASS ADJUSTMENT ON COLES MEASUREMENTS. I TURNED THE ANGLE FROM COLES MAP TO BLAZE THE WEST LINE OF LAMBERTONS PROPERTY. I TIED AND REMONUMENTED THE OTHER COLE CORNER FOR MY BEGINNING CONTROL. I SET THE S1/16 AS SHOWN. THE BASIS OF BEARINGS IS A SOLAR OBSERVATION. EQUIPMENT USED WAS A LIETZ SET 2 TOTAL STATION. WATCH OUT FOR RATTLESNAKES.

SCALE 1"=300'

DATE AUG 1991



WITNESS COR
FOUND BRASS CAP 6" HIGH
FD BT'S: 27" STUMP W/ SCRIBE BRS
N44°W 18.0' (COUNTY)
27" FIR SNAG BRS S84°E
30.5' (COUNTY)
MKD BT'S: 8" FIR SCRIBED WC 1/4
S12 BT' W/ X AND TAG BRS S84°W 6.2'
8" FIR SCRIBED WC 1/4
S12 BT' W/ X AND TAG BRS S11°W 9.2'



REFERENCE SURVEYS

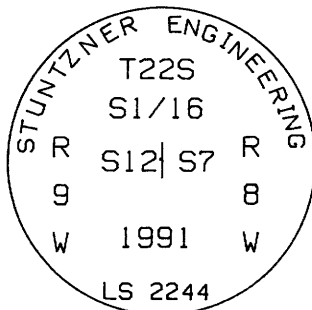
F.J. COLE M42-49. VOL 2 PG 193. CS 1/9
BLM 1963 DEPENDENT RESURVEY
DOUGLAS COUNTY REMONUMENT #32. CS 52/14

NOTES

BEARINGS TO BT'S ARE WITH HAND COMPASS (DEC'L = 19°) AND ARE TAKEN TO 1' ABOVE THE ROOT BOLE. DISTANCES TO BT'S ARE MEASURED TO SIDE CENTER (I SET A SPIKE ON NEW BT'S)

PROP. COR.
SET 5/8"X30" I.ROD W/ PLASTIC CAP MKD "STUNTZNER ENGR."
FD BT'S: FIR STUMP W/ SCRIBE
BRS S70°E 65.5'
FIR STUMP W/ SCRIBE
BRS N45°W 68.0'

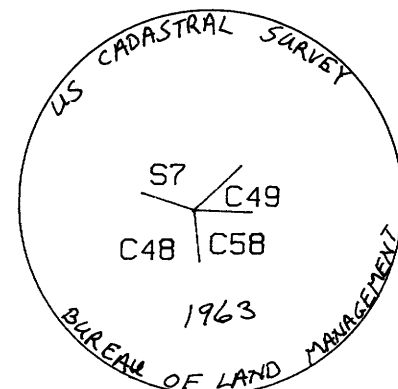
E1/4 S12
FD ROTTED FIR REMAINS AT CORNER POSITION
FD BT'S 18" FIR SNAG W/ SCRIBE BRS N50°W 13.2'
FIR REMAINS BRS S30°E 7.2'
FD COUNTY WITNESS COR. BRS NORTH 6.00'



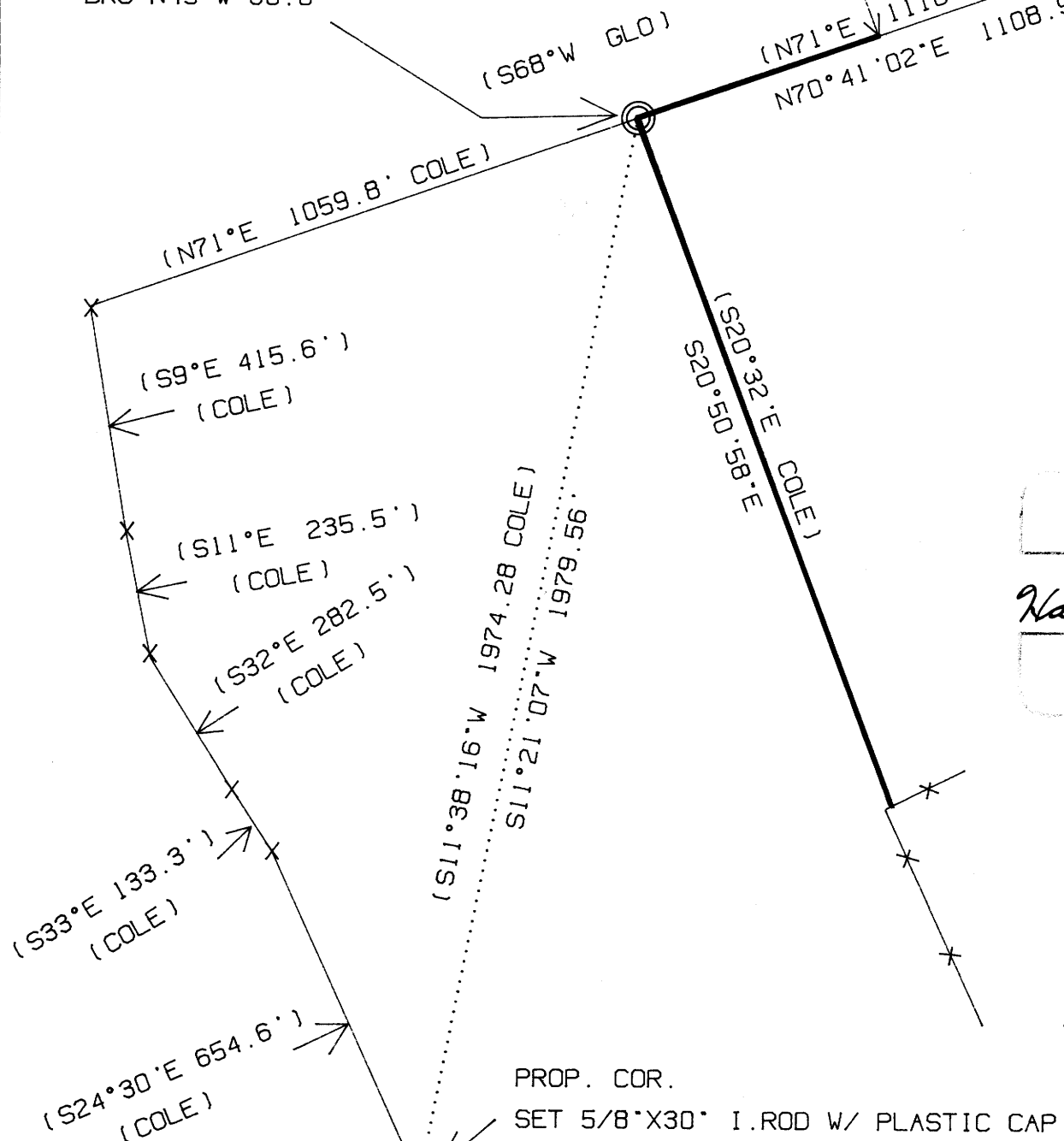
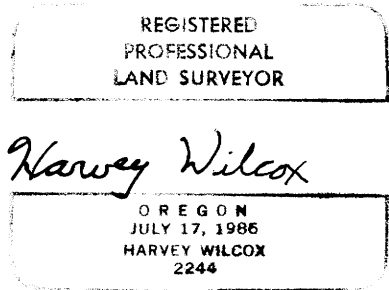
LEGEND

- CORNER FOUND
- CORNER SET
- LINE BLAZED
- X — FENCE

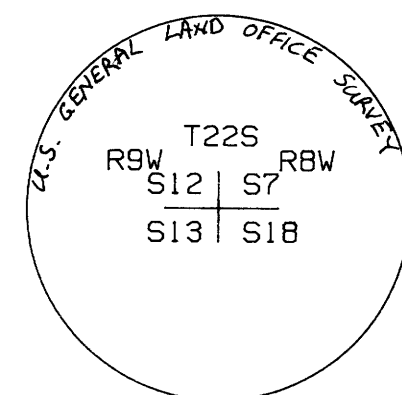
DLC COR.
FD BRASS CAP 12" HIGH W/ 3/4" I.ROD ALONGSIDE.
FD BT'S: 34" FIR W/ OPENED FACE & TAG BRS N33W 33.0' (ORIG)
BURNED FIR SNAG W/ SCRIBE
BRSS42°W 31.4'
7" CHINQUAPIN W/ MARKS BRS
BRS S53°W 20.6'
20" FIR W/ HEALED FACE & TAG BRS S32°E 58.9'



PROP. COR.
SET 5/8"X30" I.ROD W/ PLASTIC CAP MKD "STUNTZNER ENGR." ON STEEP S. SLOPE
MKD BO: + 1' UP IN 7" HIGH ROCK FACE BRS N4°W 25.7'



PROP. COR.
SET 5/8"X30" I.ROD W/ PLASTIC CAP MKD "STUNTZNER ENGR." IN CREEK
FD BT'S: 18" OAK W/ HEALED FACE BRS
N20°E 23.5' (COLE)
21" OAK W/ CAT SCAR OVER
FACE BRS S79°E (S87 1/2 E) 19.0' (COLE)



SECTION CORNER
FOUND BRASS CAP 25" NE OF DRAW
FD BT'S: 41" FIR W/ TAG BRS S62°W 36.7'
30" FIR W/ HEALED FACE & TAG
BRS S85°W 55.0'
35" FIR W/ HEALED FACE & TAG
BRS S49°E 103.0'
12" FIR W/ TAG BRS N7°E 30.2'

SURVEY BY STUNTZNER ENGINEERING & FORESTRY
P.O. BOX 118/705 S 4th
COOS BAY, OREGON 97420
PH: 267-2872 FAX: 267-0588