

FILED  
 AUG 29 1991  
 COUNTY SURVEYOR  
 DOUGLAS COUNTY, ORE.

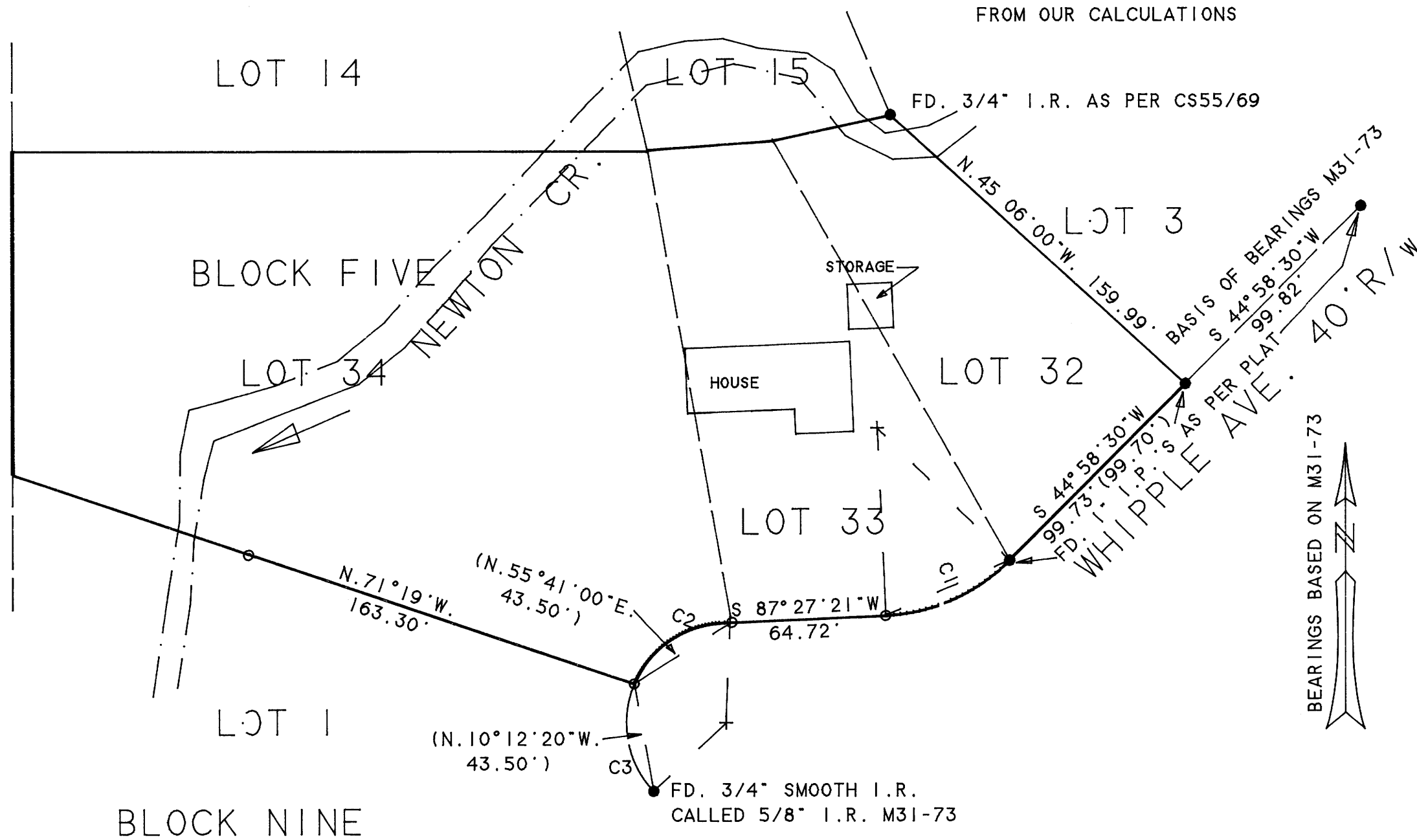
SURVEY TO SET LOT CORNERS  
 IN BLOCK 5 OF GARDEN HOMES SUBDIVISION  
 LOCATED IN THE NW 1/4 OF SEC. 14. T.27S.. R.6W..W.M.

AUGUST 1991 SCALE 1"=50'

SURVEYED FOR:  
 HAIRY BRAMMEL  
 % DICK MEYER & ASSOCIATES  
 1640 GARDEN VALLEY BLVD.  
 ROSEBURG, OR 97470

SURVEYED BY:  
 BAUGHMAN TECHNICAL SERVICE INC.  
 433 SE MAIN STREET  
 ROSEBURG, OR 97470

LEGEND:  
 ○ - SET 5/8"X30" I.R. W/PL CAP MK'D  
 BAUGHMAN TECH SERV  
 ● - FD. AS NOTED  
 ( ) - RECORD AS PER M31-73 WHEN DIFFERENT  
 FROM OUR CALCULATIONS



REGISTERED  
 PROFESSIONAL  
 LAND SURVEYOR  
 Glenn S. Baughman  
 OREGON  
 JULY 17, 1991  
 GLENN S. BAUGHMAN  
 536

CURVE	DELTA	RADIUS	ARC	TANGENT	CHORD	CHORD BEARING
C1	42° 28' 59"	75.00'	55.61'	29.15'	54.34'	S. 66° 13' 04" W.
C2	66° 16' 12"	40.00'	46.27'	26.11'	43.73'	S. 56° 08' 55" W.
C3	66° 16' 12"	40.00'	46.27'	26.11'	43.78'	S. 10° 07' 17" E.

NARRATIVE

THE PURPOSE OF THIS SURVEY WAS TO ESTABLISH THE FRONT LOT CORNERS OF LOTS 32 THRU 34 BLOCK 5 AND TO IDENTIFY THE LINES BETWEEN LOTS 34 BLOCK 5 AND LOT 1 BLOCK 9 AND IDENTIFY THE LINE BETWEEN LOTS 31 AND 32 BLOCK 5. WE USED THE SURVEY CONDUCTED IN M31-73 AS THE BASIS FOR OUR CALCULATIONS ALTHOUGH WE DIFFER SLIGHTLY IN THE CURVE CLCULATIONS ON LOTS 34 BLOCK 5 AND 1 BLOCK 9. WE TURN HIS RECORD BEARING TO SET THE DIVIDING POINT BETWEEN LOTS 34 AND 1. THIS SURVEY WAS PERFORMED BY L. FANNING AND S WESCOTT USING A LIETZ SET 4 TOTAL STATION. COMPUTATIONS AND DRAFTING BY G. BAUGHMAN.