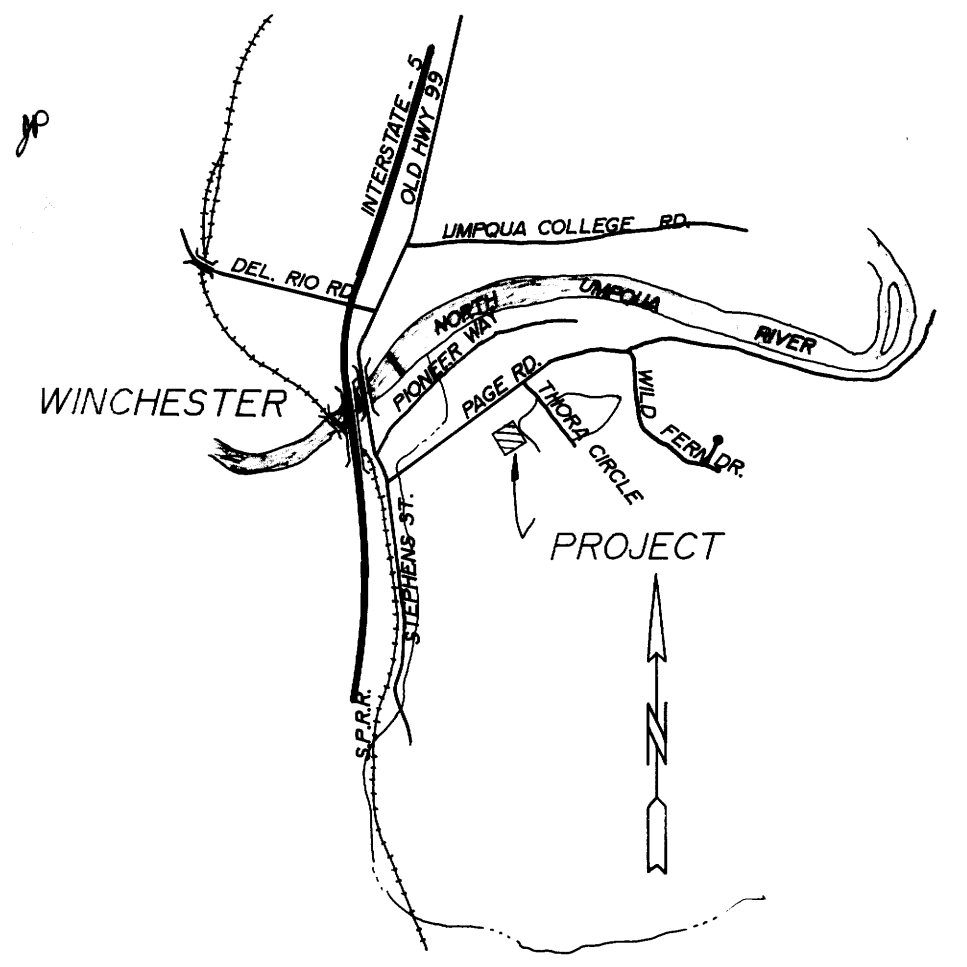
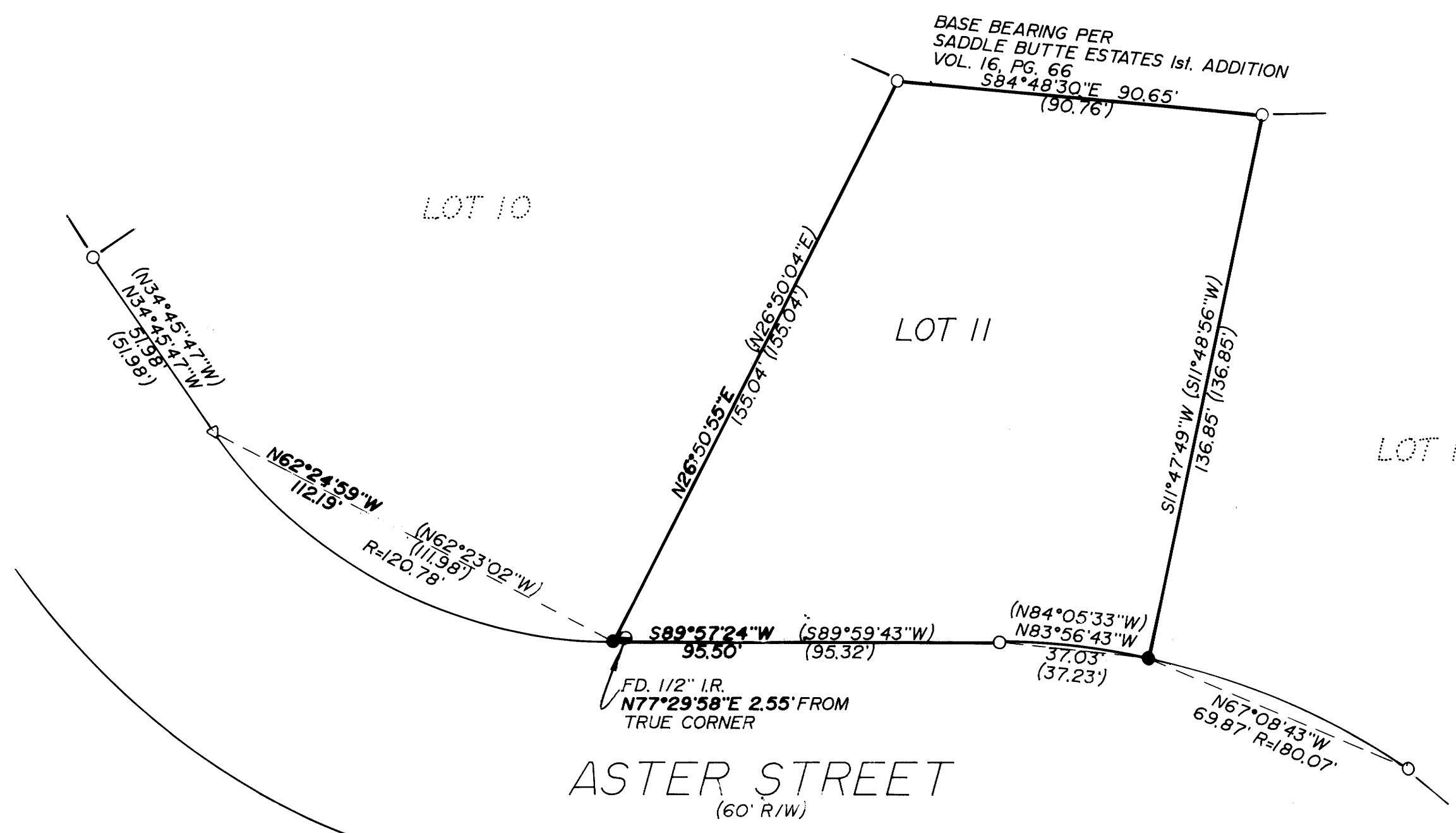


26  
JP



VICINITY MAP



- LEGEND:
- FD. 5/8" I.R. UNLESS OTHERWISE NOTED
  - SET 5/8"x30" I.R. W/CAP STAMPED "BENTZ SUR. INC."
  - △ COMPUTED POINT

NARRATIVE:  
 SET THE SOUTHWEST CORNER OF PROPERTY BY PROPORTIONING THEN A DISTANCE-DISTANCE INTERSECT USING A FOUND MONUMENT ON THE SOUTH LINE OF LOT 11 AND A COMPUTED POINT ON THE SOUTH LINE OF LOT 10. SET THE SOUTHEAST CORNER BY A DISTANCE-DISTANCE INTERSECT FROM THE NORTHEAST CORNER OF PROPERTY AND THE SOUTHEAST CORNER OF LOT 12.  
 FIELD CREW: M. HOLT, T. GRAHAM  
 OFFICE: A. TEITZEL  
 DRAFTING: M. RADCLIFFE

REGISTERED  
 OREGON  
 LAND SURVEYOR  
  
 DONALD A. BENTZ  
 889

SURVEY OF LOT 11, SADDLE BUTTE ESTATES 1st. ADDITION LYING IN THE NW 1/4 OF SEC. 30, T26S, R5W, W.M. DOUGLAS COUNTY, OREGON		
SURVEYED FOR: LEIKEN CONSTRUCTION CO. 859 W. LOOKINGGLASS RD. ROSEBURG, OR. 97470		SURVEYED BY: i.e. ENGINEERING 1205 SE COURT ROSEBURG OR. 97470 (503) 673-0166
SCALE: 1" = 30'	DATE: AUG. 1991	C.N. 0140 J.N. 01 PAGE: 1 OF 1

COUNTY SURVEYORS FILE DATA  
 DO NOT REMOVE FROM OFFICE