

COUNTY SURVEYORS FILE DATA
DO NOT REMOVE FROM OFFICE

SURVEY
OF LOTS 13 AND 14, HOMESTEAD MEADOWS IN
THE NE 1/4 OF SEC. 23, T27S, R5W, W.M., DOUGLAS COUNTY,
OREGON

SURVEYED FOR:
STEPHEN JAMES
P.O. BOX 5121
ROSEBURG, OR. 97470

SURVEYED BY:
DONALD A. BENTZ INC.
1205 SE COURT
ROSEBURG, OR. 97470
(503) 673-0166

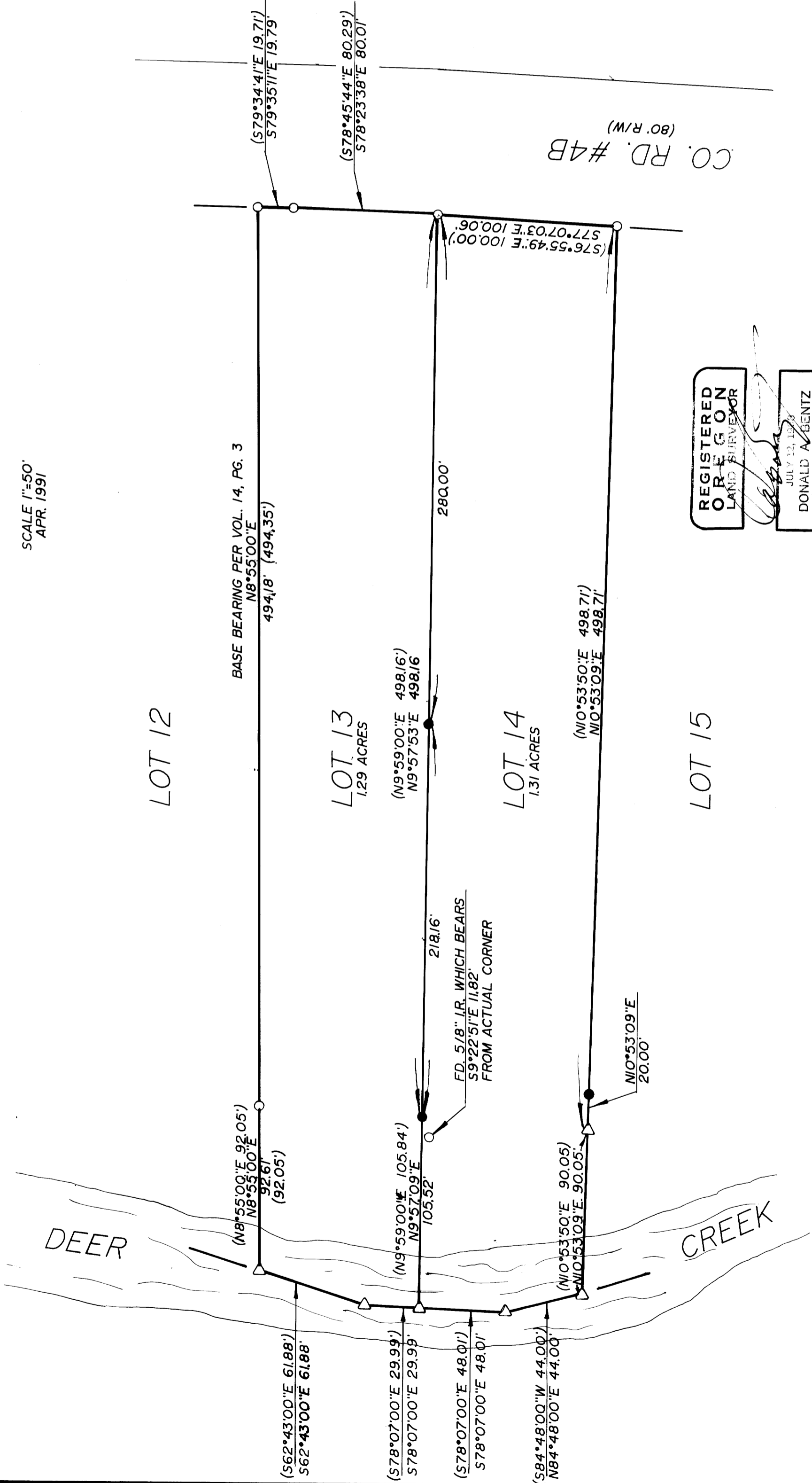
NARRATIVE:

USED FOUND MONUMENTS ON THE WEST LINE OF LOT 13 AND THE NORTH LINE OF LOTS 13 & 14. SET THE SOUTH MONUMENT BETWEEN LOTS 13 & 14 BY RECORD DISTANCE-DISTANCE INTERSECT FROM THE NORTHEAST CORNER OF LOT 13 AND THEN SET MONUMENT AT RANDOM DISTANCE ON LINE BETWEEN LOTS 13 & 14. COMPUTED THE RECORD SOUTH MONUMENT BETWEEN LOTS 14 & 15 BY RECORD DISTANCE-DISTANCE INTERSECT FROM THE NORTHEAST CORNER OF LOT 14 AND THE SOUTH MONUMENT BETWEEN LOTS 13 & 14. THEN SET MONUMENT ON LINE BETWEEN COMPUTED POINT AND NORTHEAST CORNER. ALL PER PLAT VOL. 14, PAGE 3.
FIELD CREW: N. HIBBS, M. HOLT
EQUIP: LEITZ SET 4 TOTAL STATION
OFFICE: A. TEITZEL
DRAFTING: M. RADCLIFFE

- LEGEND:
- FD. 5/8" I.R. UNLESS NOTED OTHERWISE
 - SET 5/8"x30" I.R. W/CAP MARKED "BENTZ SUR. INC."
 - △ COMPUTED POINT
 - () RECORD PER HOMESTEAD MEADOWS VOL. 14, PG. 3.



SCALE 1"=50'
APR. 1991



REGISTERED
OREGON
LAND SURVEYOR

Donald A. Bentz

JULY 22, 1979
DONALD A. BENTZ
839