

**SECTION CORNER 19 & 30 ONLY**

FOUND : 2-1/2" IRON PIPE WITH B.L.M. BRASS CAP DATED 1972  
 HAINES "T" IRON ALONGSIDE  
 25" FIR , N 34-3/4 E , 36.5' - CLOSED FACE , B.L.M. TAG  
 24" FIR , S 69 E , 39.9' - CLOSED FACE , B.L.M. TAG  
 52" FIR STUMP , N 81-1/2 E , 11.5' - PREVIOUSLY OPENED  
 FACE ROTTED , NO VISIBLE MARKS - (N73E)

**1/4 CORNER 19 & 30**

FOUND : 1-1/4" IRON PIPE WITH DOUGLAS CO. BRASS  
 CAP DATED 1962  
 20" FIR , S 24-1/2 E , 52.2' - CLOSED FACE  
 16" FIR , N 33-3/4 W , 29.7' - CLOSED FACE  
 48" FIR , S 56-1/2 E , 16.8' - PREVIOUSLY  
 OPENED , NOW HEALED - WEYCO TAG

**SECTION CORNER 19,20,29,30**

FOUND : 2-1/2" IRON PIPE WITH B.L.M. BRASS CAP DATED 1972  
 22" FIR SNAG , N 19 E , 29.4" - VISIBLE SCRIBING  
 25" FIR , N 57-1/4 E , 21.0' - CLOSED FACE , B.L.M. TAG  
 43" FIR , S 47 E , 41.6' - SCRIBE VISIBLE , B.L.M. TAG  
 13" FIR , S 19 W , 25.0' - CLOSED FACE , B.L.M. TAG  
 15" ROTTED FIR STUMP , S 45 W , 16.2' - SCRIBE VISIBLE  
 35" FIR , N 41-1/4 W , 30.4' - CLOSED FACE , B.L.M. TAG

**SECTION CORNER 24 & 25 ONLY**

FOUND : HAINES "T" IRON  
 REMAINS OF ROTTED FIR STUMP  
 N 83-1/2 E , 46.8' - NO MARKS  
 74" FIR , S 4-3/4 W , 137.5'  
 CLOSED FACE  
 52" FIR , N 48-1/4 W , 48.0'  
 VISIBLE BARK SCRIBING

**1/4 CORNER SECTION 30 ONLY**

FOUND : 1-1/4" IRON PIPE WITH DOUGLAS  
 COUNTY BRASS CAP DATED 1962  
 24" FIR , N 34 E , 25.0'  
 CLOSED FACE S 09 1/2 E 25.7' 9/19/91  
 16" FIR , S 28-1/2 E , 25.7'  
 CLOSED FACE - B.L.M. TAG  
 22" ROTTEN FIR STUB , S 62 W , 7.1'  
 PREVIOUSLY OPENED TO VISIBLE  
 SCRIBING - (S57-1/2W)

**1/4 CORNER SECTION 25 ONLY**

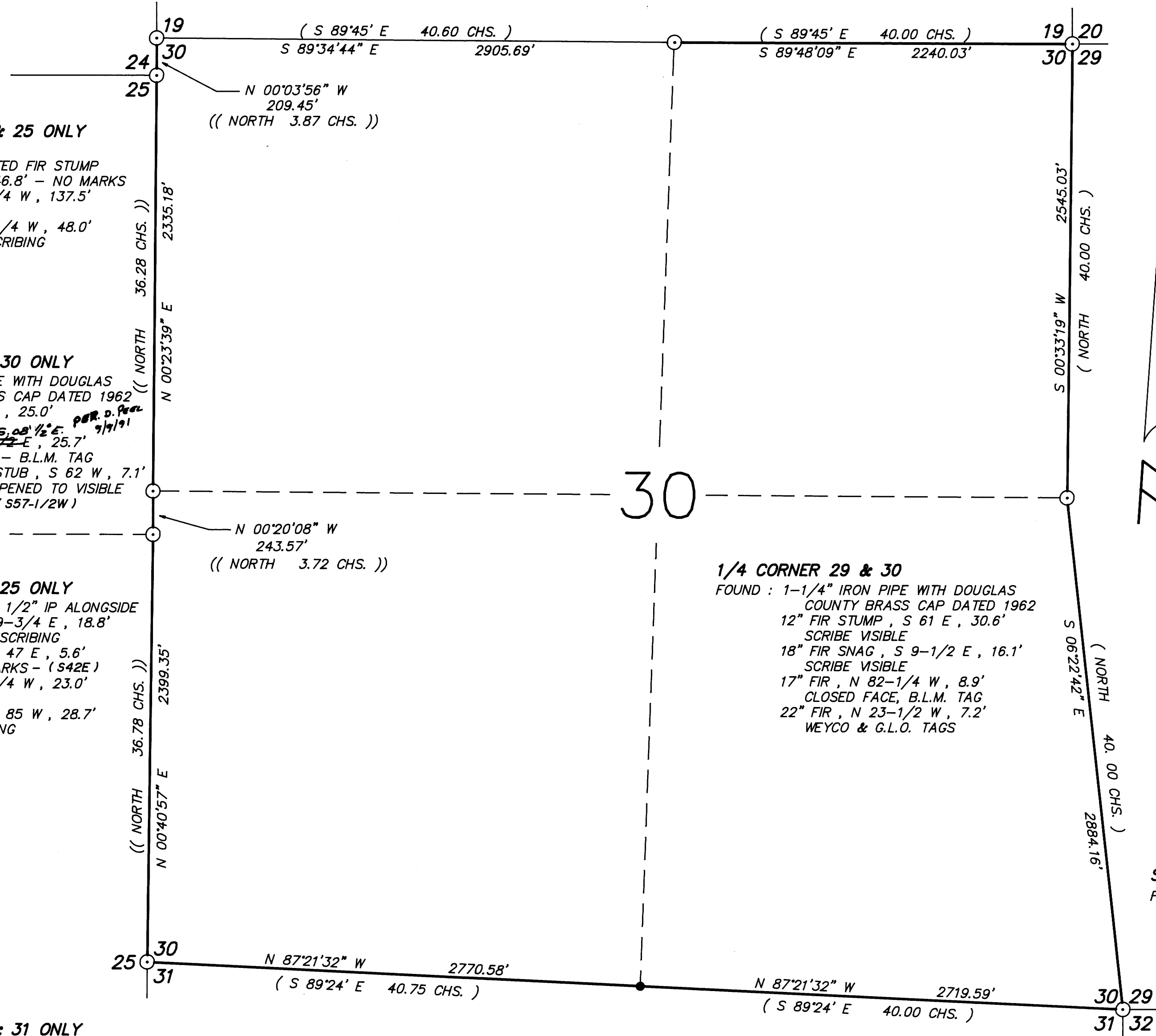
FOUND : HAINES "T" IRON , 1/2" IP ALONGSIDE  
 10" MAPLE , N 89-3/4 E , 18.8'  
 VISIBLE BARK SCRIBING  
 23" FIR STUB , S 47 E , 5.6'  
 NO VISIBLE MARKS - (S42E)  
 21" FIR , S 56-1/4 W , 23.0'  
 CLOSED FACE  
 28" FIR STUB , S 85 W , 28.7'  
 VISIBLE SCRIBING

**SECTION CORNER 30 & 31 ONLY**

FOUND : HAINES "T" IRON & 15"X6"X12" ABOVE GND.  
 STONE MKD. "+CC W" ALONGSIDE  
 46" FIR , N 30-1/4 E , 12.6' - CLOSED FACE - (N37-1/2E)  
 39" FIR STUMP , S 62-3/4 E , 12.6' - CLOSED FACE - (S56E)  
 8" CHINQUAPIN , N 66-1/2 W - 16.6' - WEYCO TAG

**1/4 CORNER 30 & 31**

SET : 2" X 41" IRON PIPE WITH BRASS CAP IN LARGE MOUND OF STONES  
 23" FIR , S 31 E , 24.3' - SCRIBED "1/4S31 BT"  
 25" FIR , S 87 W , 19.7' - SCRIBED "1/4S31 BT"  
 38" FIR , N 56 W , 23.7' - SCRIBED "1/4S30 BT"  
 26" FIR , N 52 E , 7.2' - SCRIBED "1/4S30 BT"



**- NARRATIVE -**

THIS SURVEY WAS MADE IN MARCH THROUGH JUNE, 1991, BY DONALD L. PEEL OF PEEL BAKER LAND SURVEYING, INC. , 1385 OAK STREET, EUGENE, OREGON. THE PURPOSE OF THIS SURVEY WAS TO LOCATE AND MARK SOME OF THE PROPERTY LINES OF THE LAND OWNED BY WEYERHAEUSER COMPANY IN SECTION 30, T20S, R6W, W.M. A WILD T1000 THEOMAT AND DISS E.D.M. AND A KERN K1ST THEODOLITE AND DM502 E.D.M. WERE USED TO PERFORM THIS SURVEY. BEARINGS WERE BASED ON A SOLAR OBSERVATION. CLOSED RANDOM TRAVERSES WERE RUN BETWEEN FOUND CORNERS FOR CONTROL. OFFSETS FROM THE RANDOM TRAVERSE LINE TO THE TRUE PROPERTY LINE WERE CALCULATED AND USED TO DETERMINE THE POSITION OF THE TRUE LINE. THE TRUE PROPERTY LINE WAS MARKED IN THE FIELD BY BLAZING TREES (BLAZES NOTCHED AND PAINTED RED) ON BOTH SIDES OF THE TRUE LINE. THE SOUTH 1/4 CORNER WAS SEARCHED FOR BUT NOT FOUND. SAID SOUTH 1/4 CORNER WAS SET BY SINGLE PROPORTION AND MONUMENTED AS SHOWN ON THIS PLAT. FOR THE BEARING TREES MARKED IN THIS SURVEY, THE DISTANCES WERE MEASURED FROM THE CORNER TO A "W" NAIL IN THE LOWER BLAZE AND THE BEARINGS WERE MAGNETIC, VARIATION 20'. UPON ADVICE FROM THE B.L.M. CADASTRAL SURVEYOR, THE WEST LINE OF SECTION 30 WAS HELD TO RUN FROM FOUND MONUMENT TO FOUND MONUMENT ( FROM STANDARD CORNER TO CLOSING CORNER TO STANDARD CORNER ETC. ). I FOUND A "T" IRON, SET BY WILFORD HAINES, 2.11' EAST OF LINE 1289.06' SOUTHERLY FROM THE SECTION CORNER FOR SECTIONS 24 & 25 ONLY. IT APPEARS (FROM ITS FIELD POSITION) AS IF THIS CORNER WAS SET AT MIDPOINT BETWEEN THE EAST 1/4 CORNER FOR SECTION 25 ONLY AND THE SECTION CORNER FOR SECTIONS 24 & 25 ONLY AND NOT ON LINE BETWEEN THE WEST 1/4 CORNER OF SECTION 30 AND THE SECTION CORNER FOR SECTIONS 24 & 25 ONLY.

**BASIS OF BEARING : SOLAR OBSERVATION**

**SCALE : 1" = 500'**

- CORNERS FOUND
- CORNER SET THIS SURVEY
- PROPERTY LINE BLAZED
- ( ) RECORD DATA G.L.O. 1872
- (( )) RECORD DATA G.L.O. 1891

REGISTERED  
 PROFESSIONAL  
 LAND SURVEYOR  
*Donald L. Peel*  
 OREGON  
 JULY 6, 1986  
 DONALD L. PEEL  
 752

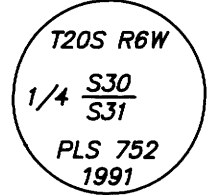
**SECTION CORNER 29, 30, 31, 32**

FOUND : HAINES "T" IRON  
 42" FIR , N 59-3/4 E , 37.4' - BARK SCRIBED  
 31" FIR STUMP , S 16-3/4 E , 21.3' - WEYCO TAG  
 AND "W" NAIL (DISTANCE TO "W" NAIL)  
 28" FIR , S 62-3/4 W , 40.6' - CLOSED FACE  
 41" FIR , N 47-1/2 W , 37.8' - PREVIOUSLY OPENED  
 TO VISIBLE SCRIBING

**SURVEY OF  
 SECTION 30, T20S, R6W, W.M.  
 DOUGLAS COUNTY, OREGON**

FOR  
**WEYERHAEUSER COMPANY**  
 BY  
 PEEL BAKER LAND SURVEYING, INC.  
 1385 OAK STREET - SUITE 3, EUGENE, OREGON  
 JUNE 25, 1991

**COUNTY SURVEYORS FILE DATA  
 DO NOT REMOVE FROM OFFICE**



MAP FILE M113-45

MAP FILE M 113 - 45