

1/4 CORNER 11 & 14

FOUND : 2-1/2" ALUMINUM PIPE WITH B.L.M. ALUMINUM CAP DATED 1982
 10" FIR , N 23-3/4 E , 17.2' - SCRIBE VISIBLE
 8" FIR STUMP , S 56 E , 14.1' - SCRIBE VISIBLE - RECORD S64-3/4E
 30" FIR STUMP , S 20-1/4 W , 26.4' - NO MARKS, LOW CUT
 14" FIR STUMP , N 78-1/4 W , 10.8' - SCRIBE VISIBLE

NOTE : HAINES "T" IRON ALONGSIDE ALUMINUM MONUMENT

CENTER-NORTH 1/16 CORNER SECTION 14

SET : 2"X42" IRON PIPE WITH BRASS CAP
 24" HEMLOCK , N 66 E , 12.5' - SCRIBED "CN1/16S14 BT"
 19" HEMLOCK , N 37 W , 17.1' - SCRIBED "CN1/16S14 BT"



NOTE - BEDRAIL OF UNKNOWN ORIGIN BEARS N79°13'09"E , 38.97'

CENTER 1/4 CORNER SECTION 14

FOUND : 2-1/2" ALUMINUM PIPE WITH B.L.M. ALUMINUM CAP DATED 1982
 11" FIR , N 84-1/4 E , 11.4' - CLOSED FACE, B.L.M. TAG
 9" HEMLOCK , S 68 W , 8.1' - SCRIBE VISIBLE, B.L.M. TAG

CENTER-SOUTH 1/16 CORNER SECTION 14

FOUND : 2-1/2" ALUMINUM PIPE WITH B.L.M. ALUMINUM CAP DATED 1982
 6" FIR , N 88-1/2 E , 46.3' - CLOSED FACE, B.L.M. TAG
 8" HEMLOCK , S 8 W , 23.1' - SCRIBE VISIBLE, B.L.M. TAG

SOUTH 1/16 CORNER 14 & 15

FOUND : 2-1/2" IRON PIPE WITH B.L.M. BRASS CAP DATED 1976
 9" FIR , S 29 E , 9.1' - CLOSED FACE, B.L.M. TAG
 7" FIR , S 86 W , 6.8' - CLOSED FACE, B.L.M. TAG

SECTION CORNER 14, 15, 22, 23

FOUND : 1-1/4" IRON PIPE WITH DOUGLAS CO. BRASS CAP DATED 1963
 20" FIR , N 55-1/4 E , 21.4' - CLOSED FACE, B.L.M. & WEYCO TAGS
 15" FIR , S 60-3/4 E , 10.5' - CLOSED FACE, B.L.M. & WEYCO TAGS
 10" FIR , S 73-3/4 W , 5.6' - CLOSED FACE, B.L.M. TAG
 11" FIR , N 50 W , 12.3' - CLOSED FACE, B.L.M. & WEYCO TAGS

1/4 CORNER 14 & 23

FOUND : 2-1/2" IRON PIPE WITH B.L.M. BRASS CAP DATED 1976
 7" FIR , N 67 E , 46.2' - CLOSED FACE, B.L.M. TAG
 20" FIR , S 54 E , 38.3' - CLOSED FACE, B.L.M. TAG

EAST 1/16 CORNER 14 & 23

FOUND : 2-1/2" IRON PIPE WITH B.L.M. BRASS CAP DATED 1976
 12" HEMLOCK , S 55 E , 10.9' - CLOSED FACE, B.L.M. TAG
 14" HEMLOCK , N 52-1/4 W , 19.3' - SCRIBE VISIBLE, B.L.M. TAG

NORTH 1/16 CORNER 13 & 14

FOUND : 2-1/2" IRON PIPE WITH B.L.M. BRASS CAP DATED 1971
 14" FIR , N 86-1/2 E , 10.1' - CLOSED FACE, U.S.F.S. TAG
 18" FIR , N 58-1/4 W , 12.2' - CLOSED FACE, U.S.F.S. TAG

1/4 CORNER 13 & 14

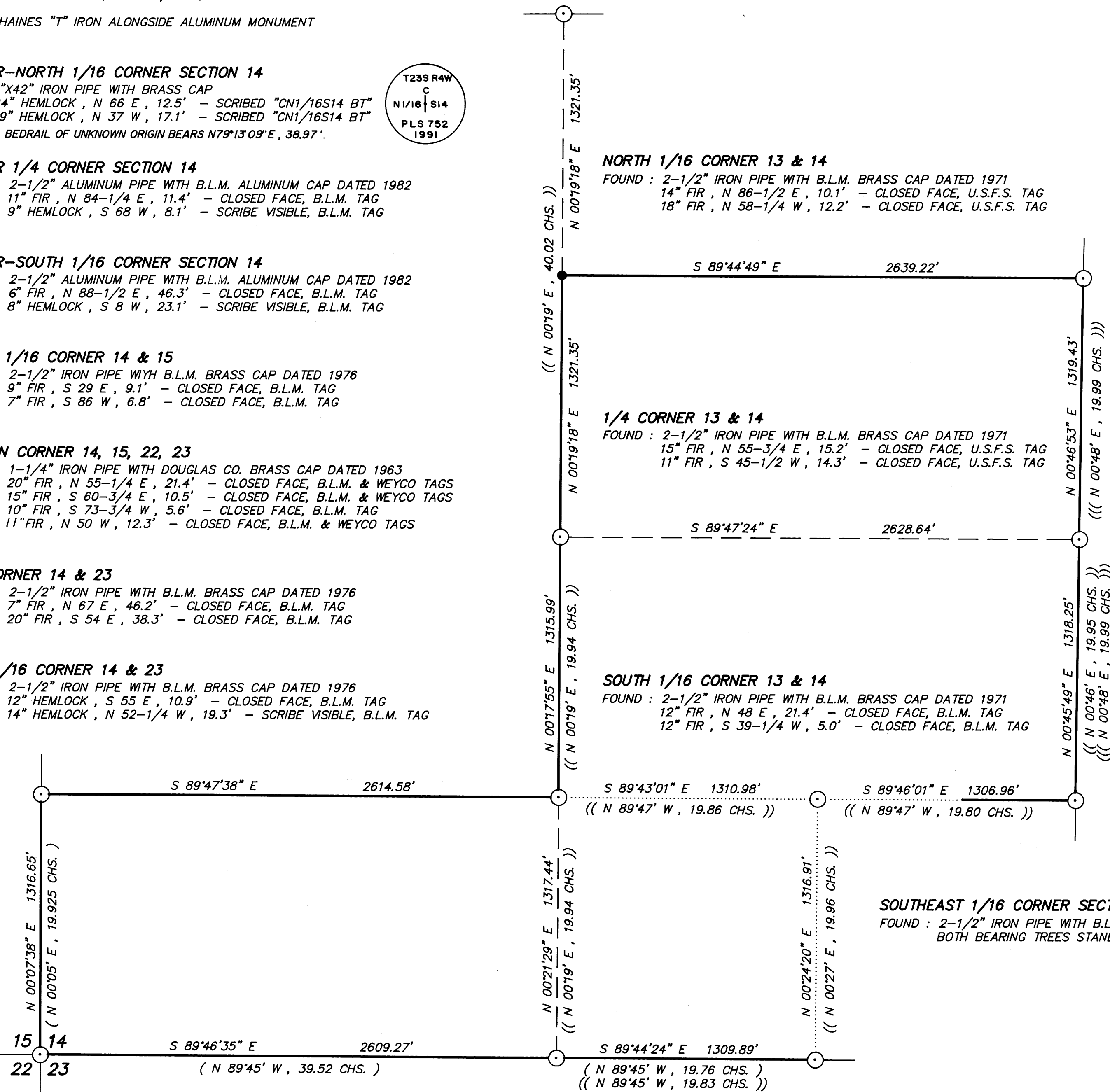
FOUND : 2-1/2" IRON PIPE WITH B.L.M. BRASS CAP DATED 1971
 15" FIR , N 55-3/4 E , 15.2' - CLOSED FACE, U.S.F.S. TAG
 11" FIR , S 45-1/2 W , 14.3' - CLOSED FACE, U.S.F.S. TAG

SOUTH 1/16 CORNER 13 & 14

FOUND : 2-1/2" IRON PIPE WITH B.L.M. BRASS CAP DATED 1971
 12" FIR , N 48 E , 21.4' - CLOSED FACE, B.L.M. TAG
 12" FIR , S 39-1/4 W , 5.0' - CLOSED FACE, B.L.M. TAG

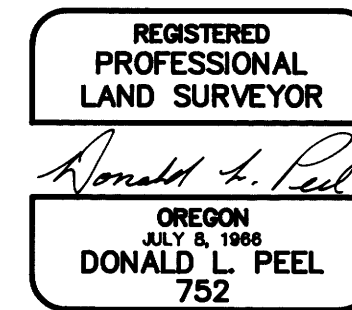
SOUTHEAST 1/16 CORNER SECTION 14

FOUND : 2-1/2" IRON PIPE WITH B.L.M. BRASS CAP DATED 1982
 BOTH BEARING TREES STANDING, DID NOT TIE THEM



- NARRATIVE -

THIS SURVEY WAS MADE IN MARCH THROUGH JUNE, 1991 BY DONALD L. PEEL OF PEEL BAKER LAND SURVEYING, INC., 1385 OAK STREET - SUITE 3, EUGENE OREGON. THE PURPOSE OF THIS SURVEY WAS TO LOCATE AND MARK THE PROPERTY LINES OF THE LAND OWNED BY WEYERHAEUSER COMPANY IN SECTION 14, T23S, R4W, W.M.. A WILD T1000 THEOMAT, WILD D15S E.D.M., KERN KIMT THEODOLITE AND KERN DM502 E.D.M. WERE USED TO PERFORM THIS SURVEY. BEARINGS WERE BASED ON A SOLAR OBSERVATION. A CLOSED RANDOM TRAVERSE WAS RAN BETWEEN FOUND CORNERS FOR CONTROL. OFFSETS FROM THE RANDOM TRAVERSE LINE TO THE TRUE PROPERTY LINE WERE CALCULATED TO DETERMINE THE POSITION OF THE TRUE PROPERTY LINE. THE TRUE PROPERTY LINE WAS MARKED IN THE FIELD BY BLAZING TREES (BLAZES NOTCHED AND PAINTED RED) ON BOTH SIDES OF THE TRUE LINE. THE CENTER-NORTH 1/16 CORNER WAS SET AT MIDPOINT BETWEEN THE CENTER 1/4 CORNER AND THE NORTH 1/4 CORNER. SAID CORNER WAS MONUMENTED AS NOTED ON THIS PLAT. THE DISTANCE FROM THIS CORNER TO THE BEARING TREES WAS MEASURED TO A "W" NAIL IN THE LOWER BLAZE AND THE BEARINGS WERE MAGNETIC, VARIATION 20'.



BASIS OF BEARING : SOLAR OBSERVATION

SCALE : 1" = 400'

- CORNERS FOUND
- CORNER SET THIS SURVEY
- PROPERTY LINE BLAZED
- () RECORD DATA B.L.M. 1976
- (()) RECORD DATA B.L.M. 1982
- ((())) RECORD DATA B.L.M. 1971

SURVEY IN SECTION 14, T23S, R4W, W.M. DOUGLAS COUNTY, OREGON

FOR WEYERHAEUSER COMPANY
 BY PEEL BAKER LAND SURVEYING, INC.
 1385 OAK ST. - SUITE 3, EUGENE, OREGON
 JUNE 18, 1991

PROPERTY SURVEYORS FILE DATA
 DO NOT REMOVE FROM OFFICE

MAP FILE M113-42

M113-42