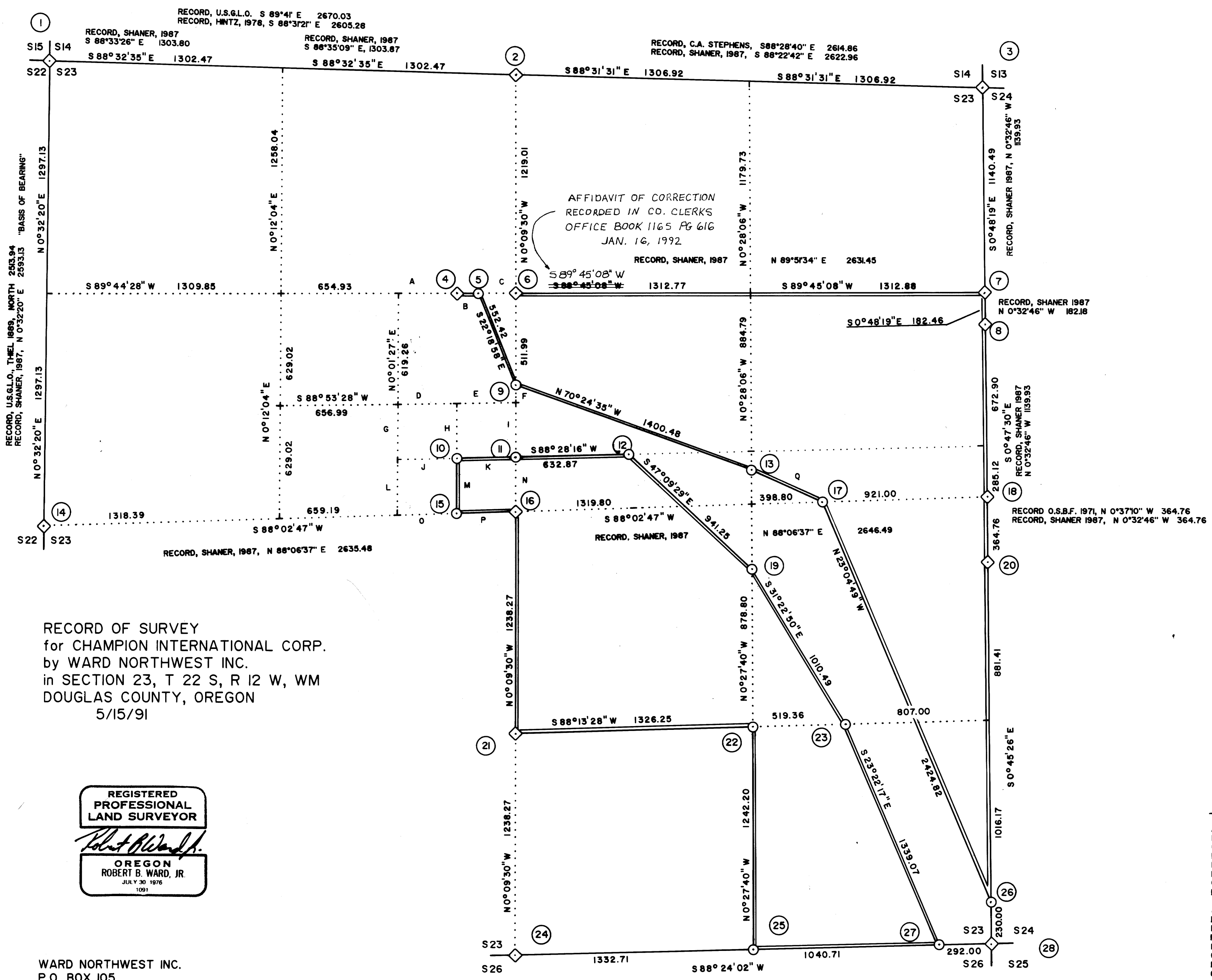
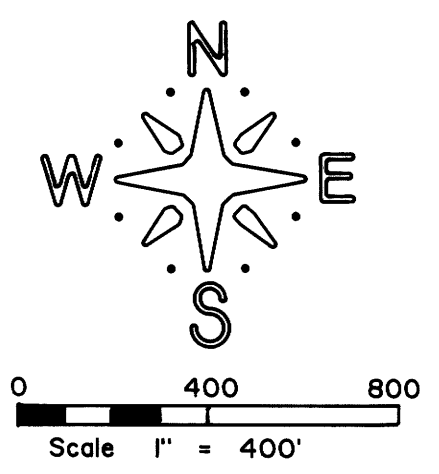


M113-35A



RECORD OF SURVEY
for CHAMPION INTERNATIONAL CORP.
by WARD NORTHWEST INC.
in SECTION 23, T 22 S, R 12 W, WM
DOUGLAS COUNTY, OREGON
5/15/91

REGISTERED
PROFESSIONAL
LAND SURVEYOR

Robert B. Ward, Jr.
OREGON
ROBERT B. WARD, JR.
JULY 30, 1976
1091

WARD NORTHWEST INC.
P.O. BOX 105
FLORENCE, OREGON 97439
PH: 997-9201

LEGEND

- ◊ Corner found and used for control except as noted
- Corner set this survey are 2-1/2" dia. brass cap on a 1" X 30" iron pipe with flared bottom
- Property line posted with 6" steel fence posts

NARRATIVE

The purpose of this survey was to establish property corners and land lines which define Champion International Corporation ownership.

The Basis of Bearing for this survey was the bearing of the north 1/2 of the west section line as established by Bruce Shaner in 1987 - (Reference RM3-66A)

As part of Shaner's 1987 survey, he established the CS1/16, C1/4, CNI/16 corners for section 23. I found each of these corners to be out of position the amount noted on sheet 2 of this survey map. In order to avoid multiple corners, I did not set a monument at my computed position but show a reference to Shaner's monument and BT's from the computed corner position.

I also found the N1/16 corner on the east line of section 23 and the E1/4 corner for section 23, which were set by Shaner, to also be out of position. Again, without setting a new monument I held my computed position and show a reference to Shaner's monuments and BT's. I felt uncomfortable holding these corner positions since my return for the east 1/2 of the north section line differed from that of Shaner's by 9.12 feet.

I held the north 1/16 corner on the west section line of section 24 set by Oregon State Board of Forestry as control for the section line between section 23 and section 24.

Interior subdivision corners positions were determined per the BLM Manual of Survey Instruction, 1973 edition. Angle Points were established per Deed of Record.

This survey was performed with a NIKON-NTD2 semi total station (20 second gun).

ADDITIONAL COURSES

A	N 89°44'28" E	327.46
B	N 89°44'28" E	119.11
C	N 89°44'28" E	208.35
D	N 88°53'28" E	328.49
E	N 88°53'28" E	328.49
F	N 0°09'30" W	97.52
G	S 0°01'27" W	309.63
H	S 0°03'59" E	307.19
I	N 0°09'30" W	304.75
J	N 88°28'05" E	329.04
K	N 88°28'05" E	309.63
L	S 0°01'27" W	307.19
M	N 0°03'59" W	304.75
N	N 0°09'30" W	329.60
O	S 88°02'47" W	329.60
P	S 88°02'47" W	329.60
Q	N 65°54'57" W	438.29

PROPERTY SURVEYORS FILE DATA
DO NOT REMOVE FROM OFFICE

M113-35A