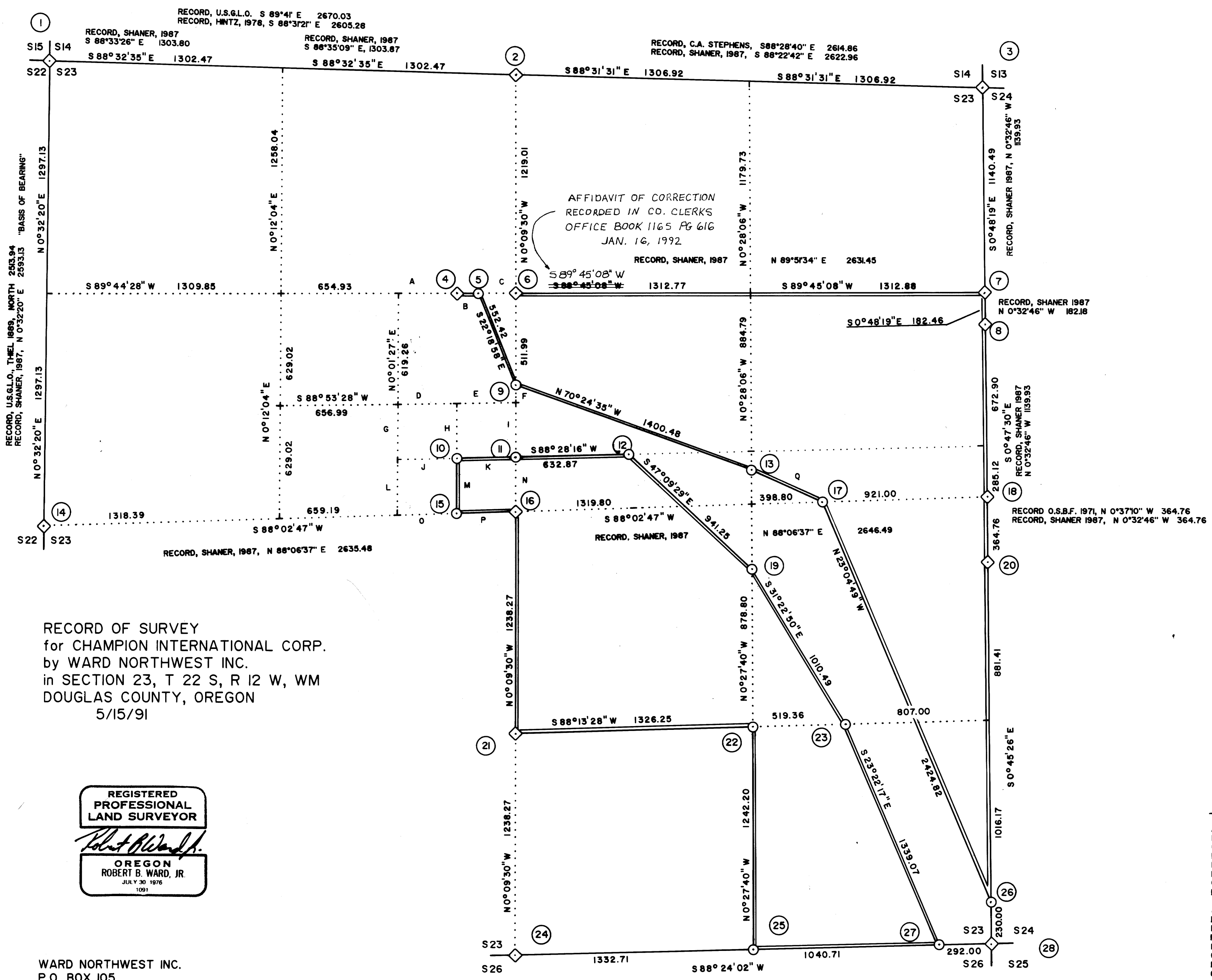
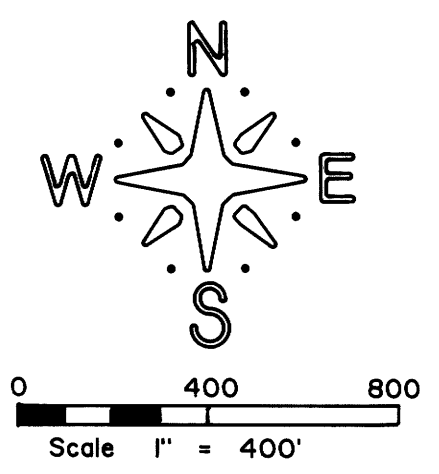


M113-35A



RECORD OF SURVEY
for CHAMPION INTERNATIONAL CORP.
by WARD NORTHWEST INC.
in SECTION 23, T 22 S, R 12 W, WM
DOUGLAS COUNTY, OREGON
5/15/91

REGISTERED
PROFESSIONAL
LAND SURVEYOR

Robert B. Ward, Jr.
OREGON
ROBERT B. WARD, JR.
JULY 30, 1976
1091

WARD NORTHWEST INC.
P.O. BOX 105
FLORENCE, OREGON 97439
PH: 997-9201

LEGEND

- ◊ Corner found and used for control except as noted
- Corner set this survey are 2-1/2" dia. brass cap on a 1" X 30" iron pipe with flared bottom
- Property line posted with 6" steel fence posts

NARRATIVE

The purpose of this survey was to establish property corners and land lines which define Champion International Corporation ownership.

The Basis of Bearing for this survey was the bearing of the north 1/2 of the west section line as established by Bruce Shaner in 1987 - (Reference RM3-66A)

As part of Shaner's 1987 survey, he established the CS1/16, C1/4, CNI/16 corners for section 23. I found each of these corners to be out of position the amount noted on sheet 2 of this survey map. In order to avoid multiple corners, I did not set a monument at my computed position but show a reference to Shaner's monument and BT's from the computed corner position.

I also found the N1/16 corner on the east line of section 23 and the E1/4 corner for section 23, which were set by Shaner, to also be out of position. Again, without setting a new monument I held my computed position and show a reference to Shaner's monuments and BT's. I felt uncomfortable holding these corner positions since my return for the east 1/2 of the north section line differed from that of Shaner's by 9.12 feet.

I held the north 1/16 corner on the west section line of section 24 set by Oregon State Board of Forestry as control for the section line between section 23 and section 24.

Interior subdivision corners positions were determined per the BLM Manual of Survey Instruction, 1973 edition. Angle Points were established per Deed of Record.

This survey was performed with a NIKON-NTD2 semi total station (20 second gun).

ADDITIONAL COURSES

Point	Bearing	Distance
A	N 89°44'28" E	327.46
B	N 89°44'28" E	119.11
C	N 89°44'28" E	208.35
D	N 88°53'28" E	328.49
E	N 88°53'28" E	328.49
F	N 0°09'30" W	97.52
G	S 0°01'27" W	309.63
H	S 0°03'59" E	307.19
I	N 0°09'30" W	304.75
J	N 88°28'05" E	329.04
K	N 88°28'05" E	309.63
L	S 0°01'27" W	307.19
M	N 0°03'59" W	304.75
N	N 0°09'30" W	329.60
O	S 88°02'47" W	329.60
P	S 88°02'47" W	329.60
Q	N 65°54'57" W	438.29

PROPERTY SURVEYORS FILE DATA
DO NOT REMOVE FROM OFFICE

M113-35A

RECORD OF SURVEY
for CHAMPION INTERNATIONAL CORP.
by WARD NORTHWEST INC.
in SECTION 23, T 22 S, R 12 W, WM
DOUGLAS COUNTY, OREGON
5/15/91

① SECTION CORNER S14, S15, S22, S23

FND: 2-1/2" Brass Cap with a copper pipe along side, with the following accessories;

30" Alder stump bears S 63-3/4° E, 98.0 (visible scribing) See Note
52" Cedar stump bears N 24-3/4° E, 84.7 (visible scribing)
39" Spruce stump bears S 18-3/4° W, 30.3 (visible scribing)
29" Hemlock stump bears N 11-1/4° W, 41.5 (visible scribing)

NOTE: Record S 42° E, 97.0

② QUARTER CORNER S14, S23

FND: 1" Copper Pipe set as the corner monument with the following accessories;

18" Cedar bears S 61-3/4° W 47.7 (visible scribing)
32" Fir bears N 40-1/2° W 43.5 (healed face)

③ SECTION CORNER S13, S14, S23, S24,

FND: 3/4" Copper Pipe with a rusted iron pipe along side with the following accessories;

11" Spruce bears N 57-3/4° W, 38.1 (healed face)
18" Alder bears N 25-1/2° E, 22.4 (visible scribing)
16" Alder bears S 61-1/4° E, 36.5 (visible scribing)
19" Alder bears S 4-3/4° W, 33.7 (no marks on face/east hacks)

④ C-E-E-NW 1/256 CORNER S23

From my computed position for this corner I found a 3" Brass Cap set by RLS 430 in 1988 to bear S 70°08'43" W, 1.55 feet. From the computed position I also found the following accessories;

42" Cedar bears N 87° E, 27.5 (visible scribing)
25" Hemlock bears N 15-1/2° E, 63.8 (visible scribing)

⑤ ANGLE POINT NO. 5 S23

SET: 2-1/2" Dia. Brass Cap corner monument 2834 feet west of the N 1/16 corner on the east section line per deed of record with the following accessories;

15" Alder bears S 10° E, 29.3 (barkscribed "AP-5 S23 BT")
21" Maple bears N 39° W, 13.7 (barkscribed "AP-5 S23 BT")

⑥ CNI/16 CORNER S23

From my computed position for this corner I found a 2-1/2" Brass Cap set by RLS 430 in 1987 to bear S 53°13'05" W, 3.17 feet. From the computed position I also found the following accessories;

48" Cedar bears N 88-1/2° E, 22.7 (visible scribing)
28" Spruce bears N 46-3/4° W, 47.3 (visible scribing)

②⑧ SECTION CORNER S23, S24, S26

FND: 3" Dia. Brass Cap set by O.S.B.F. RS 359, 1969 with a 4X4 white cedar post 2.5 feet west and the following accessories;

17" Alder bears N 85-1/2° W, 38.9 (visible scribing)
14" Alder bears S 3-1/2° W, 54.0 (visible scribing)
New bearing trees this survey:
8" Alder bears N 24° W, 15.8 (barkscribed "T22S R12W S23 BT")
9" Alder bears S 19° E, 16.0 (barkscribed "T22S R12W S24 BT")

⑦ N1/16 CORNER ON EAST LINE SECTION 23 ONLY

From my computed position for this corner I found a 2-1/2" Brass Cap set by RLS 430 in 1987 to bears S 77°42'0" E, 1.79 feet. From the computed position I also found the following accessories;

22" Cedar bears S 2-1/2° W, 57.7 (visible scribing) N 1/16 S23
21" Hemlock bears N 16-1/4° W, 20.6 (visible scribing) 1987 RLS 430

⑧ N1/16 CORNER ON WEST LINE SECTION 24 ONLY

FND: 3" Dia. Brass Cap set by RLS 359 in 1971 with the following accessories;

23" Hemlock bears S 66-3/4° E, 68.4 (healed face) N1/16 S24
15" Alder bears N 8-1/2° E, 6.7 (visible scribing) 1971 RS 359

⑨ ANGLE POINT NO. 4 S23

SET: 2-1/2" Dia. Brass Cap corner monument 1731 feet south of the N 1/4 corner per deed of record with the following accessories;

13" Alder bears N 27-1/2° E, 47.7 (barkscribed "AP-4 S23 BT")
14" Alder bears N 52-3/4° W, 37.5 (barkscribed "AP-4 S23 BT")

⑩ SE-SE-NW 1/256 CORNER S23

SET: 2-1/2" Dia. Brass Cap corner monument with the following accessories;

9" Alder bears S 43° W, 12.3 (barkscribed "SESENW 1/256 S23 BT")
12" Cedar bears N 32° W, 21.3 (scribed "SESENW 1/256 S23 BT")

⑪ C-S-S-N 1/256 CORNER S23

SET: 2-1/2" Dia. Brass Cap corner monument with the following accessories;

12" Alder bears S 6-1/2° E, 49.5 (barkscribed "CSSN 1/256 S23 BT")
18" Alder bears S 70-1/2° W, 140.1 (barkscribed CSSN 1/256 S23 BT")

⑫ ANGLE POINT NO. 6 S23

SET: 2-1/2" Dia. Brass Cap corner monument 2003 feet west of point on east section line per deed, with the following accessories;

14" Alder bears N 21° W, 238.1 (barkscribed "AP-6 S23 BT")
13" Alder bears N 70-1/2° E, 176.5 (barkscribed "AP-6 S23 BT")

⑬ ANGLE POINT NO. 3 S23

SET: 2-1/2" Dia. Brass Cap corner monument 2167 feet south of the E1/16 on the north section line per deed, with the following accessories;

11" Alder bears S 57° W, 9.7 (barkscribed "AP-3 S23 BT")
10" Alder bears N 50° W, 37.5 (barkscribed "AP-6 S23 BT")

⑭ W 1/4 CORNER S23

FND: 2-1/2" Dia. Brass Cap set by RLS 430, in 1987 with the following accessories;

24" Hemlock stump bears N 38-1/4° W, 2.3 (visible scribing)
21" Spruce stump bears N 47-3/4° E, 13.0 (visible scribing)

Also found 2-1/2" Dia. Brass Cap set in error as west 1/4 corner by Ward, LS1091, in 1982 to bear N 0°54'45" E, 66.46 feet.

⑮ C-E-E-W 1/256 CORNER S23

SET: 2-1/2" Dia. Brass Cap corner monument with the following accessories;

14" Spruce bears S 85-3/4° W, 46.6 (scribed "CEEWI/256 S23 BT")
15" Alder bears N 51° E, 83.3 (barkscribed "CEEWI/256 S23 BT")

⑯ C 1/4 CORNER S23

From my computed position for this corner, I found a 2-1/2" Brass Cap set by RLS 430 in 1987 to bear S 47°04'27" W, 3.26 feet. From the computed position I also found the following accessories;

7" Hemlock bears S 80° W, 30.5 (visible scribing) See Note
12" Spruce bears N 9-1/2° W, 55.2 (visible scribing)
NOTE: BT originally recorded as a Fir

⑰ ANGLE POINT NO. 2 S23

SET: 2-1/2" Dia. Brass Cap corner monument 921 feet west of the East 1/4 Corner per deed, with the following accessories;

53" Cedar bears N 13° E, 21.3 (scribed "AP-2 S23 BT")
40" Myrtle bears S 85° E, 11.5 (barkscribed "AP-2 S23 BT")

⑱ E 1/4 CORNER S23

From my computed position for this corner, I found a 2-1/2" Brass Cap set by RLS 430 in 1987 to bear N 77°37'2" E, 0.67 feet. From the computed position, I also found the following accessories;

47" Fir bears S 37-1/4° W, 55.0 (open face)
56" Fir bears N 42-1/4° W, 37.4 (open face)

⑲ ANGLE POINT NO. 7 S23

SET: 2-1/2" Dia. Brass Cap corner monument 2121 feet north of the E 1/16 corner on the south section line per deed, with the following accessories;

11" Alder bears S 8° W, 52.2 (barkscribed "AP-7 S23 BT")
40" Maple bears N 57° W, 54.1 (barkscribed "AP-7 S23 BT")

⑳ W 1/4 CORNER S24

FND: 3" Dia. Brass Cap set by RS 359 in 1971 with the following accessories;

23" Alder bears N 59-3/4° E, 16.3 (visible scribing)
"XBO" in sand stone bears S 26° E, 68.3

㉑ CS 1/16 CORNER S23

From my computed position for this corner, I found a 2-1/2" Brass Cap set by RLS 430 in 1987 to bear S 17°17'2" W, 1.88 feet. From the computed position I also found the following accessories;

20" Fir bears S 73-1/4° E, 29.1 (visible scribing)
15" Alder bears N 80-3/4° W, 52.7 (visible scribing)

㉒ SE 1/16 CORNER S23

SET: 2-1/2" Dia. Brass Cap corner monument with the following accessories;

11" Myrtle bears N 86-1/2° E, 35.6 (barkscribed "SE1/16 S23 BT")
44" Hemlock bears S 17-1/2° W, 30.8 (scribed "SE1/16 S23 BT")

㉓ ANGLE POINT NO. 8 S23

SET: 2-1/2" Dia. Brass Cap corner monument 807 feet west of the S 1/16 corner on the east section line per deed, with the following accessories;

25" Cedar bears S 83° W, 23.6 (scribed "AP-8 S23 BT")
14" Alder bears S 12° W, 14.3 (barkscribed "AP-8 S23 BT")

㉔ 1/4 CORNER S23, S26

FND: 3" Dia. Brass Cap set by O.S.B.F. in 1970 with the following accessories;

"XBO" in sand stone face bears N 18-3/4° E, 9.0
17" Alder bears N 50° W, 5.9 (visible scribing) Not of record
14" Alder bears S 6-1/2° W, 37.4 (visible scribing)

㉕ E 1/16 CORNER S23, S26

SET: 2-1/2" Dia. Brass Cap corner monument with the following accessories;

5" Hemlock bears N 35° E, 21.2 (scribed "E1/16 S23 BT")
10" Alder bears S 56-1/2° W, 41.5 (barkscribed "E1/16 S26 BT")

㉖ ANGLE POINT NO. 1 S23

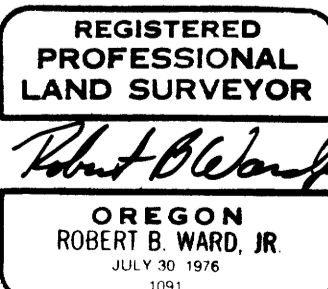
SET: 2-1/2" Dia. Brass Cap corner monument 230 feet north of the southeast section corner per deed, with the following accessories;

9" Alder bears S 14° W, 11.0 (barkscribed "AP-1 S23 BT")
14" Alder bears N 47° W, 22.0 (barkscribed "AP-1 S23 BT")

㉗ ANGLE POINT NO. 9 S23

SET: 2-1/2" Dia. Brass Cap corner monument 292 feet west of the southeast section corner per deed, with the following accessories;

8" Maple bears N 26° E, 20.3 (barkscribed "AP-9 S23 BT")
11" Alder bears S 62° E, 27.9 (barkscribed "AP-9 S26 BT")



M113-358