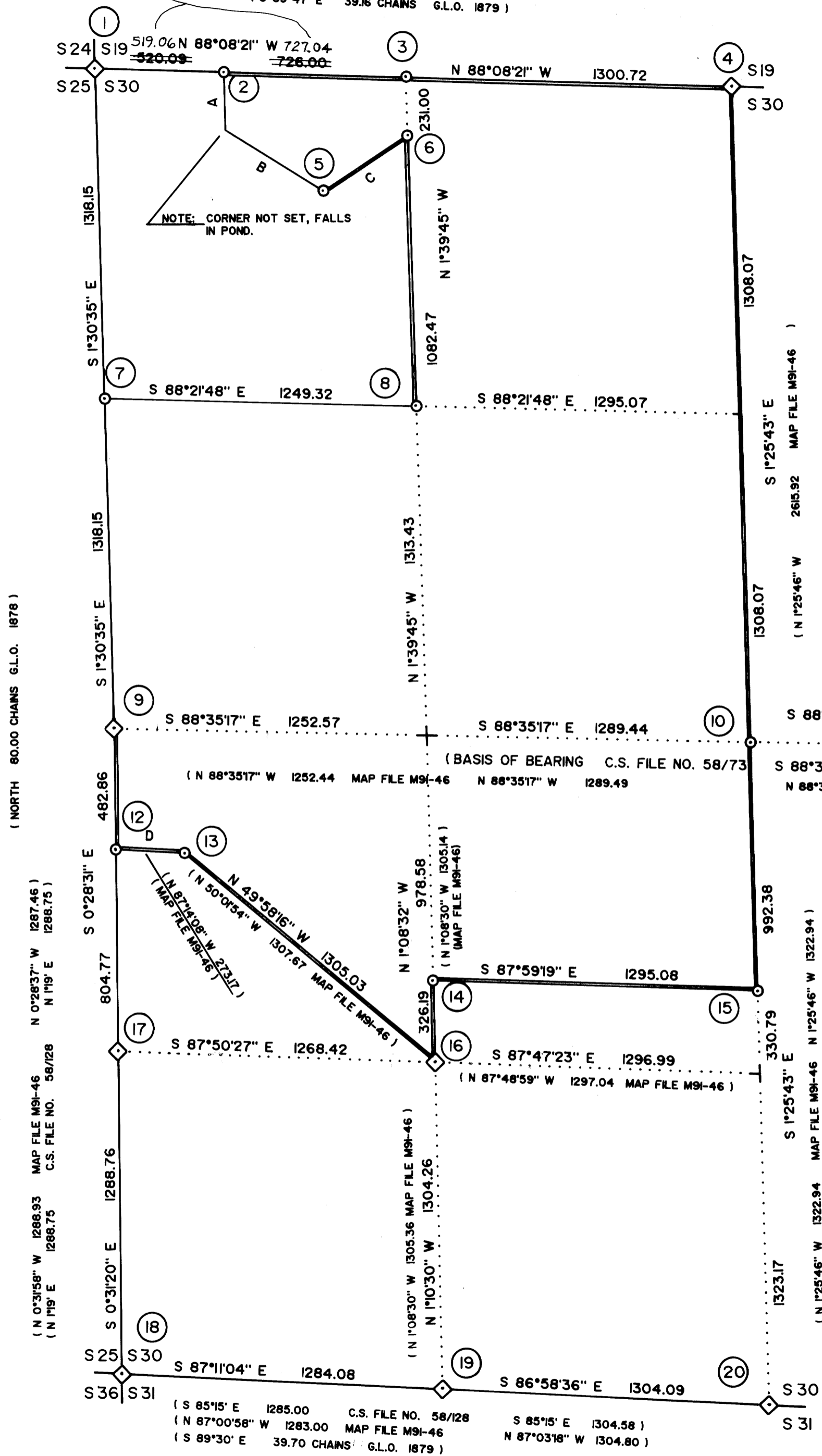


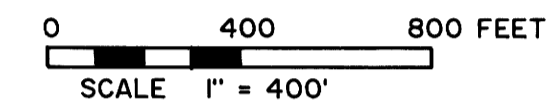
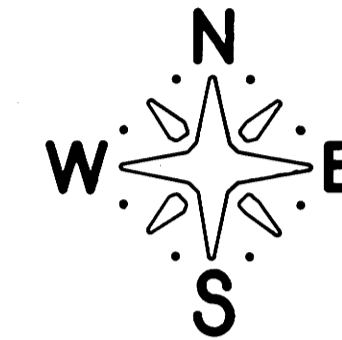
M113-34A

AFFIDAVIT OF CORRECTION
RECORDED IN COUNTY CLERK'S
OFFICE BOOK 1165, PG 617
JAN. 16, 1992

(S 89°47' E 39.16 CHAINS G.L.O. 1879)



RECORD OF SURVEY
for CHAMPION INTERNATIONAL CORP.
by WARD NORTHWEST INC.
in SECTION 30, T23S, R9W, WM
DOUGLAS COUNTY, OREGON
5/15/91



LEGEND

- ◇ FOUND CORNER MONUMENT
- CORNER SET THIS SURVEY
- LINE POSTED WITH 6FT STEEL FENCE POSTS
- () RECORDED SURVEY DATA

NARRATIVE

THE PURPOSE OF THIS SURVEY WAS TO ESTABLISH PROPERTY CORNERS AND LAND LINES WHICH DEFINE CHAMPION INTERNATIONAL CORPORATION OWNERSHIP.

FOUND PROPERTY CORNERS WERE HELD AS CONTROL. CORNER MONUMENTS SET ARE 2-1/2" DIA. BRASS CAP ON A 1" X 30" IRON PIPE WITH A FLARED BOTTOM.

STANDARD INTERIOR SUBDIVISION CORNERS WERE SET PER THE BLM MANUAL OF SURVEY INSTRUCTION, 1973 EDITION.

CORNER NUMBERS 2, 5, AND 6 WERE SET PER DOUGLAS COUNTY DEED RECORD BOOK 1026 PAGE 872.

CORNER NUMBER 12 AND 13, WERE SET PER DOUGLAS COUNTY DEED RECORD BOOK 548 PAGE 795. CORNER NUMBER 12 WAS FIRST ESTABLISHED AT A SINGLE PROPORTION POSITION BETWEEN CORNER NUMBER 9 AND 17. HOLDING CORNERS NUMBER 16 AND 12, A BROKEN BOUNDARY ADJUSTMENT WAS APPLIED TO COMPUTE THE POSITION FOR CORNER NUMBER 13.

THE BASIS OF BEARING IS THE EAST/WEST CENTERLINE AS ESTABLISHED BY RICHARD HINTZ IN 1975, REFERENCE C.S. FILE NO. 58/73.

THIS SURVEY WAS PERFORMED USING A NIKON NTD-2 SEMI TOTAL STATION (20 SECOND GUN).

REFERENCE SURVEYS,

- RICHARD HINTZ (LS 497) C.S. NO. 58/73, 1975
- MICHAEL MCDOWELL (LS 1032) C.S. NO. 58/128, 1976
- ROCKY LUCKMAN (LS 1254) MAP FILE M91-46, 1982

ADDITIONAL COURSES

Course	Bearing	Distance
A	S 1°39'46" E	231.00
B	S 58°00'53" E	458.70
C	N 56°59'07" E	402.60
D	N 87°15'28" W	275.23

REGISTERED
PROFESSIONAL
LAND SURVEYOR

Robert B. Ward, Jr.
OREGON
ROBERT B. WARD, JR.
JULY 30 1976
1091

WARD NORTHWEST INC.
P.O. BOX 105
FLORENCE, OREGON 97439
PH: 997-9201

M113-34A