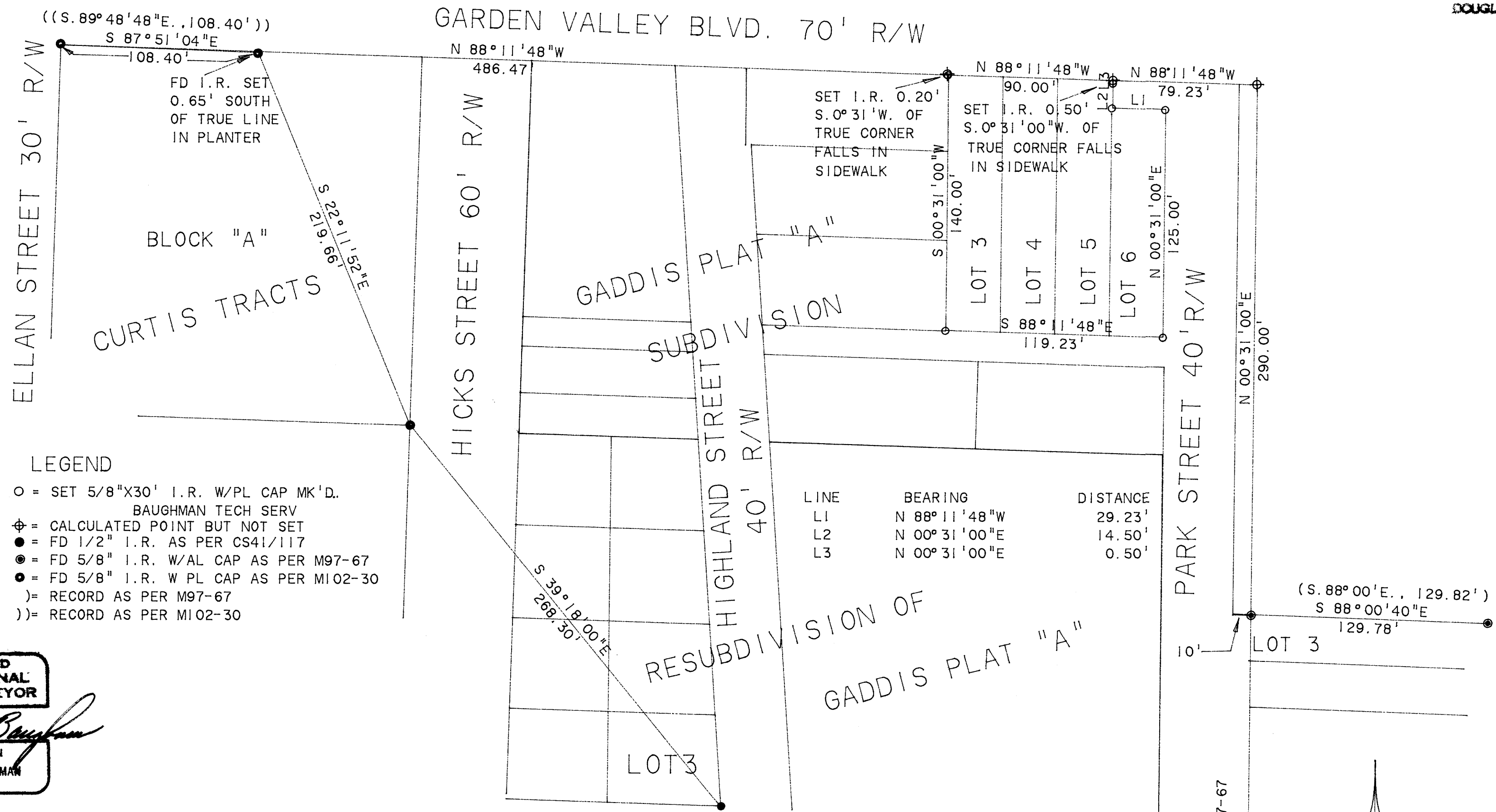


MAP FILE 1113-22

FILED
JUN 20 1991
COUNTY SURVEYOR
DOUGLAS COUNTY, OREGON



- LEGEND
- = SET 5/8" X 30' I.R. W/PL CAP MK'D. BAUGHMAN TECH SERV
 - ⊕ = CALCULATED POINT BUT NOT SET
 - = FD 1/2" I.R. AS PER CS41/117
 - ⊙ = FD 5/8" I.R. W/AL CAP AS PER M97-67
 - ⦿ = FD 5/8" I.R. W PL CAP AS PER M102-30
 - () = RECORD AS PER M97-67
 - (()) = RECORD AS PER M102-30

LINE	BEARING	DISTANCE
L1	N 88° 11' 48" W	29.23'
L2	N 00° 31' 00" E	14.50'
L3	N 00° 31' 00" E	0.50'

REGISTERED PROFESSIONAL LAND SURVEYOR
Glenn S. Baughman
 OREGON
 JULY 14, 1961
 GLENN S. BAUGHMAN
 536

SURVEY TO RE-SET LOT CORNERS LOTS 3, 4, 5 & 6, BLOCK 2, GADDIS PLAT "A"
 NW 1/4 OF THE NE 1/4 SECTION 13, T.27S., R.6W., W.M.
 JUNE 1991
 SCALE 1" = 50'

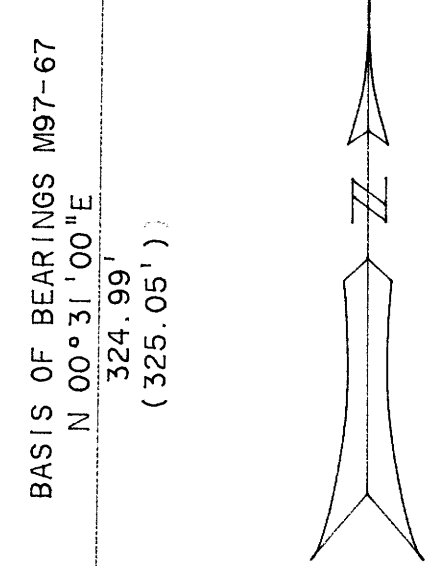
SURVEYED FOR:
 VETERANS MEMORIAL ASSOCIATION
 % DON KITZMAN
 1780 N.E. BEULAH ST.
 ROSEBURG, OR 97470

SURVEYED BY:
 BAUGHMAN TECHNICAL SERVICE INC.
 433 S.E. MAIN ST.
 ROSEBURG, OR 97470

NARRATIVE:

THE PURPOSE OF THIS SURVEY WAS TO ESTABLISH THE OUTER CORNER OF LOTS 3, 4, 5 & 6, BLOCK 2, GADDIS PLAT "A". WE HELD THE RECORD DISTANCE ALONG THE WEST BOUNDARY OF BLOCK 3 FROM MONUMENTS SET BY HOWARD JOHNSTONE AND INVERSED TO THE NW CORNER OF CURTIS TRACTS BLOCK "A" AS ESTABLISHED BY DON BENTZ. WE WERE NOT ABLE TO LOCATE ANY OF THE ORIGINAL CORNERS IN BLOCK 2 OF GADDIS PLAT "A" AND THE SE CORNER OF LOT 3, BLOCK 1, GADDIS PLAT "A" RESUB. THEREFORE BY POSITION CALCULATION WE OPTED TO SET THE CORNERS BY RECORD DISTANCES AND BEARINGS PARALLEL TO THE CONTROL AND DESCRIBED ABOVE.

THE FIELD WORK WAS ACCOMPLISHED BY L. FANNING AND S. WESCOTT USING A LIETZ SET 4 TOTAL STATION, COMPUTATIONS AND DRAFTING WAS PERFORMED BY G. BAUGHMAN.



MAP FILE 1113-22

NOT REMOVE FROM OFFICE