

RECORD OF SURVEY

IN THE SW 1/4, SECTION 34, T25S, R6W, W.M.

FOR DAN FUGATE

APRIL, 1991

SCALE: 1" = 400'

SECTION CORNER COMMON TO S27, S28, S33 & S34.

Found 3/4" brass cap marked:
County Surveyor's Office, 1963 T25S R6W S28 | S27
S33 | S34

S 1/16, S33 & S34

Set 2 1/2" x 30" aluminum pipe 25" in the ground with a 3 1/4" aluminum cap marked:

T25S R6W
S 1/16
S33 | S34

LS 1651
1991

from which:

a 14" D. fir bears N88°W 6.9 feet which I scribed "S 1/16 S33 BT" in double blaze.

a 9" D. fir bears S16°E 25.0 feet which I scribed "S 1/16 S34 BT" in double blaze.

SECTION CORNER COMMON TO S33 & S34, T25S, R6W AND S3 & S4, T26S, R6W

I found a DCSO brass cap marked:

County Surveyor's Office
1974

T25S
Witness Corner
S33 | S34 R
S 4 | S 3 W
T26S
1963

bears Due East 100.00 feet.

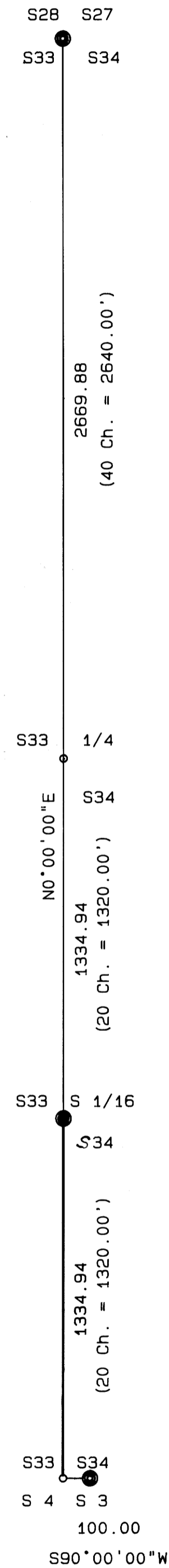


LEGEND

- ⊙ Found monument as noted
- () Record information per GLO Plat
- Set Monument as noted
- Line marked and posted
- Calculated Point

BASIS OF BEARINGS PER GLO PLAT

(North 80 Ch. = 5280.00')



NARRATIVE

The purpose of this survey was to monument the Northwest corner and to post the west line of that property of ~~described~~ in Deed Reference Number 74-17030 of the Deed Records of Douglas County.

The Section Corners of the west boundary of Section 34, T25S, R6W, were tied and after a diligent but futile search for the 1/4 Corner of said Section 34, they were used to proportion the 1/4 Corner and the South 1/16 Corner by Single Proportioning per the "Manual of Survey Instruction".

REGISTERED
PROFESSIONAL
LAND SURVEYOR

Herman A. Pieske

OREGON
JULY 14, 1978
HERMAN A. PIESKE
1651