

COR S29, S30, S31, S32

I FOUND THIS ORIG. COR IN MY 1989 SURVEY OF S31  
FD A 3/4"x30" I. ROD W/ 2" ALUM CAP  
FD ORIG BT'S:

ROOT HOLE OF A  
DOWN FIR BRS  
N40°W 17.8'  
ROOT HOLE OF A  
DOWN FIR BRS  
N70°E 22.4'  
ROOT HOLE OF A  
ROTTEN SPRUCE  
BRS S50°E 13.2'  
FD BT'S: 16"  
ALDER BRS N52°W  
18.56'  
A 20" FIR BRS  
N19°E 25.9'  
A 22" FIR BRS  
S69°E 17.7'  
A 24" FIR BRS  
S44°W 22.0'

**W1/16 S29 & S32**  
SET 3/4"x30" I. ROD W/ 2" ALUM  
CAP  
MKD BT'S: A 15" CEDAR SCRIBED  
"W1/16 S29 BT" W/ AN X AT BH  
AND TAG BRS N9°E 53.43'  
A 26" FIR SCRIBED "W1/16 S29  
BT" W/ AN X AT BH AND TAG BRS  
N48°E 51.40'

**1/4 COR S31 & S32**  
I FOUND THIS ORIG COR IN MY  
1989 SURVEY OF SECTION 31  
FD 3/4"x30" I. ROD W/ 2" ALUM CAP  
AT NW BASE OF A 23" CEDAR  
FD ORIG BT: A 46" CEDAR STUMP  
BRS N59°E 30.36'  
FD BT'S: A 26" CEDAR BRS N62°W  
17.1'  
A 20" CEDAR BRS S88°E 15.1'

**S1/16 S31 & S32**  
SET A 3/4"x30" I. ROD W/ 2" ALUM CAP  
AT NORTH BASE OF AN 18" SPRUCE  
MKD BT'S: A 17" FIR SCRIBED "S1/16  
S31 BT" W/ AN X AT BH AND TAG BRS  
N86°W 11.49'  
A 12" SPRUCE SCRIBED "S1/16 S32 BT"  
W/ AN X AT BH AND TAG BRS N24 1/2°E  
5.91'

**CC S31 & S32**  
I FOUND THIS ORIG COR IN MY 1989  
SURVEY OF SECTION 31  
FD 3/4"x30" I. ROD W/ 2" ALUM CAP  
FD ORIG BT'S: A FIR STUMP BRS  
N16°W 26.4'  
A FIR STUMP BRS S50°E 23.1'  
FD BT'S: 26" FIR BRS N49°W 16.1'  
15" ALDER BRS N37°E 28.4'  
10" CEDAR BRS S20°W 2.2'

# SURVEY FOR OREGON DEPT OF FISH AND WILDLIFE

LOCATED IN SECTION 32 T22S, R12W, W.M. DOUGLAS COUNTY, OREGON

SCALE 1"=400'

DATE JULY 1990

**1/4 COR S29 & S32**

SET A 3/4"x30" I. ROD W/ 2"  
ALUM CAP AT PROP. MEASURE  
MKD BT'S: A 37" FIR SCRIBED  
"S1/4 S29 BT" W/ AN X AT BH  
AND TAG BRS N12°E 30.1'  
A 27" FIR SCRIBED "S1/4 S29  
BT" W/ AN X AT BH AND TAG  
BRS N81°E 22.8'  
A 12" CHERRY  
BRS S87°W  
24.2'  
AN 18" HEMLOCK  
BRS N43°W 27.1'

**MEANDER COR**

I FOUND THIS ORIG MC IN MY 1986 SURVEY  
FD ORIG BT'S: CORNER TREE IS UPROOTED  
INTO LAKE  
A 48" FIR STUMP BRS S27 1/2°W 8.6'  
A ROTTED FIR BRS N30°W 7.3' (REC  
N40 1/2°W 11LKS)  
FD BT: A 29" FIR BRS N39°W 39.6'

**COR S28, S29, S32, S33**

FD BCIP AT ORIG. COR POSITION  
FD ORIG BT'S: A 46" FIR STUMP  
BRS S46°E (REC S32°E) 11.2'  
A 50" FIR STUMP BRS S34 1/2°W  
22.0'  
FD BT'S: 18" HEMLOCK UPROOT  
BRS S15°W 3.8'  
8" HEMLOCK REMAINS BRS S79°E  
10.4'  
24" FIR BRS N71°E 20.2'  
22" FIR BRS S68°E 18.6'  
14" SPRUCE SNAG BRS S50°W  
17.3'  
15" FIR UPROOT BRS N35°W  
10.0'  
12" ALDER BRS EAST 6.0'

**1/4 COR S32 & S33**

FD BCIP AT ORIG POSITION  
FD ORIG BT: A SPRUCE STUMP BRS N78 1/2°E  
31.7'  
FD BT'S: A 48" CEDAR STUMP BRS N43°W 44.7'  
AN 80" SPRUCE BRS N68°E 45.8'

**CW 1/16 S32**

SET A 3/4"x30" I. ROD W/ 2"  
ALUM CAP  
MKD BT'S: A 23" FIR SCRIBED  
"CW1/16 S32 BT" W/ AN X AT BH  
AND TAG BRS N70°W 24.5'  
A 10" CEDAR SCRIBED "CW1/16 S32  
BT" W/ AN X AT BH AND TAG BRS  
N22°W 7.9'

**MEANDER COR**

I FOUND THIS ORIG MC IN  
MY 1986 SURVEY  
FD 3/4"x30" I. ROD W/ 2"  
ALUM CAP  
FD ORIG BT'S: 26" CEDAR  
STUMP ROOTHOLE BRS  
S64°W 6.6'  
24" ROTTED SPRUCE STUMP  
BRS N52°W 7.9'  
FD BT'S: 21" FIR BRS  
N58°E 24.2'  
32" SPRUCE BRS S25°E  
34.4'

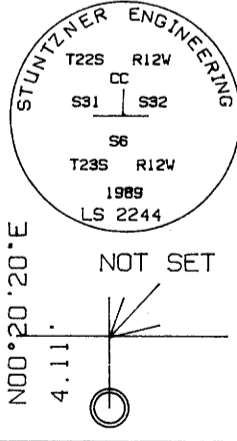
**N1/4 S5**

FD 3/4"x30" I. ROD W/ 2" ALUM CAP  
FD ORIG BT'S: REMAINS OF 30" FIR  
BRS N43°W 15.2'  
24" DOWN CEDAR BRS S76°E 8.6'  
FD BT'S: 22" FIR BRS S79°E 38.3'  
20" FIR BRS S14°W 41.8'

**LEGEND**

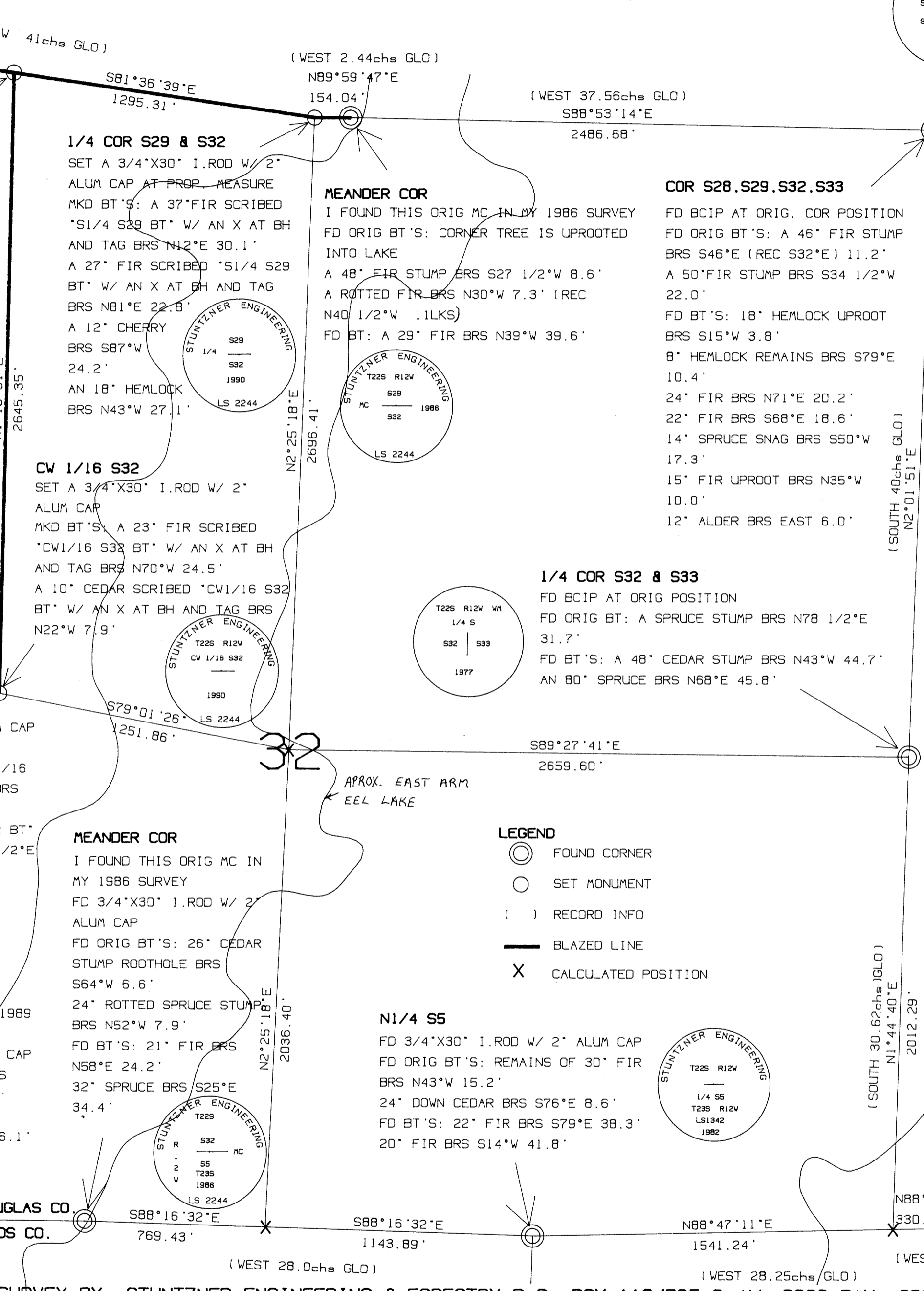
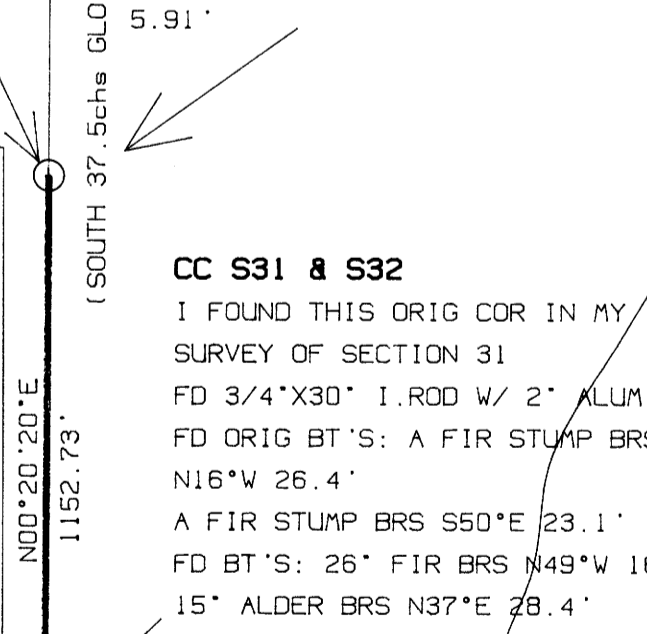
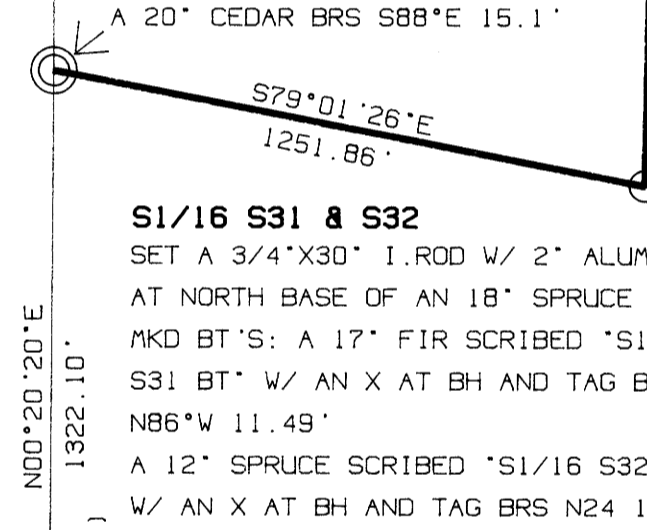
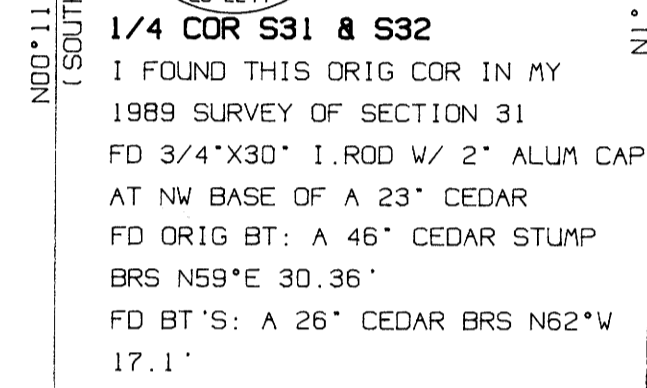
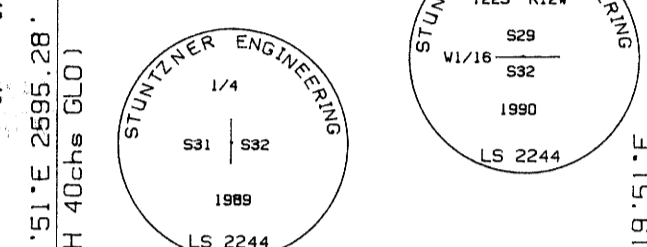
- FOUND CORNER
- SET MONUMENT
- ( ) RECORD INFO
- BLAZED LINE
- X CALCULATED POSITION

**DETAIL**



NOT SET

MEANDER COR  
SEE MY 1989 SURVEY OF SECTION 31 FOR  
INFO ON THIS ORIG COR



**NARRATIVE "A"**

THE PURPOSE OF THIS SURVEY WAS TO SET THE CORNERS AND BLAZE THE LINES SHOWN FOR LOGGING PURPOSES. THIS SURVEY WAS DONE IN CONJUNCTION WITH SURVEYS IN SECTIONS 6 & 31 WHICH WERE COMPLETED IN 1989. I FOUND THE ORIGINAL CORNERS FOR THE NW COR, W1/4 COR AND SW CLOSING COR AS SHOWN ON MY 1989 SURVEY OF SECTION 31. I SEARCHED FOR THE N 1/4 COR OF SEC. 32 BUT WAS UNABLE TO FIND IT. I PROPORTIONED IN THE 1/4 COR USING SECTION 5-36 OF THE BLM MANUAL. I CALCULATED THE SE CLOSING CORNER WITH SINGLE PROPORTION BETWEEN THE FD ORIGINAL N1/4 CORNER OF S5 AND THE ORIGINAL MC ON THE EAST BANK OF NORTH TENMILE LAKE. I PROPORTIONED THE S1/4 CORNER OF S32 BY SINGLE PROPORTION BETWEEN THE FD ORIGINAL N1/4 CORNER OF S5 AND THE FD ORIGINAL MC ON THE EAST BANK OF EEL LAKE. (SEE MY SEPARATE NARRATIVE "B" ABOUT AN ERROR ON THE PLAT). I CALCULATED THE CENTER 1/4 CORNER BY INTERSECTING A LINE BETWEEN THE N1/4 AND S1/4 WITH A LINE FROM THE EAST 1/4 ON A MEAN BEARING OF THE EAST HALF OF THE NORTH AND SOUTH SECTION LINES. I SET THE CW1/16 AND THE WEST 1/16 ON THE NORTH LINE AT THE MIDPOINT OF THEIR RESPECTIVE LINES. I THEN SET THE S1/16 ON THE WEST LINE BY SINGLE PROPORTION. FOR A MORE IN DEPTH ANALYSIS OF WHAT I HAVE DONE PLEASE SEE MY SEPARATE NARRATIVE "B". EQUIPMENT USED WAS A WILD T1000 THEODOLITE AND WILD D11000 EDM. FIELD PERSONNEL INCLUDED HARVEY WILCOX, JERRY ESTABROOK AND BRUCE WEBSTER.

**NARRATIVE "B" SEE**

REGISTERED  
PROFESSIONAL  
LAND SURVEYOR  
*Harvey Wilcox*  
JULY 17, 1986  
HARVEY WILCOX  
2244

**NOTES**

BEARINGS TO BT'S WERE TAKEN WITH A HAND COMPASS (DECL=19° E) TO THE CENTER OF THE ROOT BOLE.  
DISTANCES ARE TO CENTER UNLESS OTHERWISE NOTED (NEW BT'S HAVE A SPIKE AT SIDE CENTER).

**REFERENCE SURVEYS**

ORIGINAL GLO SURVEYS  
M103-31 1986 BY WILCOX AND STUNTNER  
M66-30 1977 BY SHANER

**BASIS OF BEARINGS**

BASIS OF BEARINGS IS FROM A SOLAR OBSERVATION

FILED  
AUG 9 1990  
COUNTY SURVEYOR  
DOUGLAS COUNTY, ORE.

**MEANDER COR**  
SEE SURVEY M103-31 FOR  
INFO ON THIS ORIG COR  
NOT TIED THIS SURVEY

SURVEY BY: STUNTNER ENGINEERING & FORESTRY P.O. BOX 118/705 S 4th COOS BAY, OREGON PH: (503) 267-2872

COUNTY SURVEYORS FILE DATA  
DO NOT REMOVE FROM OFFICE

MAP FILE M112-9  
CS FILE 0563/119 (5)

MAP FILE M112-9  
CS FILE 0563/119 (5)

FILED

TP  
AUG 9 1990

NARRATIVE "B"

COUNTY SURVEYOR  
DOUGLAS COUNTY, ORE.

Survey Map No. M 112 - 9  
Location: Section 32, T22S, R12W, W.M., Douglas County  
Date: July, 1990  
By: Stuntzner Engineering & Forestry  
PO Box 118/705 S. 4th  
Coos Bay, Oregon 97420  
Phone: (503) 267-2872

My Narrative "A" on the survey map gives an overview of what I did. This narrative is to explain my reasons. In my 1989 survey of Section 31, I found the original NW Corner, W1/4 Corner and SW Closing Corner of Section 32. I set the S1/16 by single proportion between the W1/4 Corner and the original closing corner. I calculated the true SW closing corner at the intersection of the line from the W1/4 of Section 32 and the original closing corner and the line from the original M.C. on the East bank of the West arm of Eel Lake and having found no evidence of the original corner to Section 5 and 6 I used the original M.C. on the East bank of the East arm of Eel Lake. I remonumented the original position and did not monument the true intersection at the SW Corner of Section 32.

I was unable to find the N1/4 Corner so I reset it using Section 5-36 of the BLM manual. Using the found original NW Corner and the found original M.C. on the West bank of the East arm of Eel Lake. I used the irregular boundary method to accomodate for the East and West halves of the line having been run by different surveyors and the original plat showing an angle break at the 1/4 corner. I found a fir stump and maple resprouts nearby that approximated the original BT's but I felt I should have been able to see marks on the fir and there were none so I used my proportionate position.

I calculated the Center 1/4 by extending a line from the E1/4 on an average bearing of the East halves of the North and South section lines to intersect with a line between the North and South 1/4 Corners. To do this I found the original NE Corner which gave me the North line. I then found the original E1/4 Corner which gave me a starting point for my Westerly centerline projection. The SE closing corner falls on North Tenmile Lake. The corners on the East and West bank of the lake were called witness corners but there was no corner to witness at that time so they should have been meandor corners. The closing corner was set later by running South to the North bank of the lake and setting a M.C. also called a witness to the corner. This corner has not been recovered. The original surveyor then tied to the M.C. on the East bank and calculated the closing corner. He then checked the distance from the M.C. East to the corner of Sections 4 and 5 at 10.55 chs. The original measure was 11.75 chs. Survey M103-31 retraced this distance as 11.89 chs.

I tied into the control traverse for Survey M103-31, which ties the position of the original M.C. on the East bank of North Lake. I then calculated the position of the closing corner by single proportion between the M.C. and the found original N1/4 of Section 5.

The original plat of Section 32 has an error in distance that I isolated to the distance between the M.C.'s on the West bank of North Lake and the East bank of Eel Lake (Plat shows 51.81 chs. but notes show 48.5chs. which agrees more nearly with my measure). The lotting on the plat shows that he intended the 1/4 corner to be at 40 chs. with the error to the West and South. Using the measure as returned on the survey of the standard parallel and 4.99 chs. from the M.C. on the East bank of North Lake to the closing corner I established the S1/4 by single proportion between the found original M.C. on the East bank of Eel Lake and the found original N1/4 of Section 5.

The North and South Section lines both have angle breaks so I calculated the average bearing by stacking the courses and distances and inverting between the end points. This gave me the information I needed to calculate the Center 1/4.

The original plat does not show lotting for the Northwest 1/4 so I set the W1/16 and CW1/16 at the midpoints of their respective lines.

In a letter from Wayne Gardner, Chief Branch of Cadastral Survey BLM, he agreed with the method I have described above.

REGISTERED  
PROFESSIONAL  
LAND SURVEYOR

*Harvey Wilcox*

OREGON  
JULY 17, 1986  
HARVEY WILCOX  
2244