

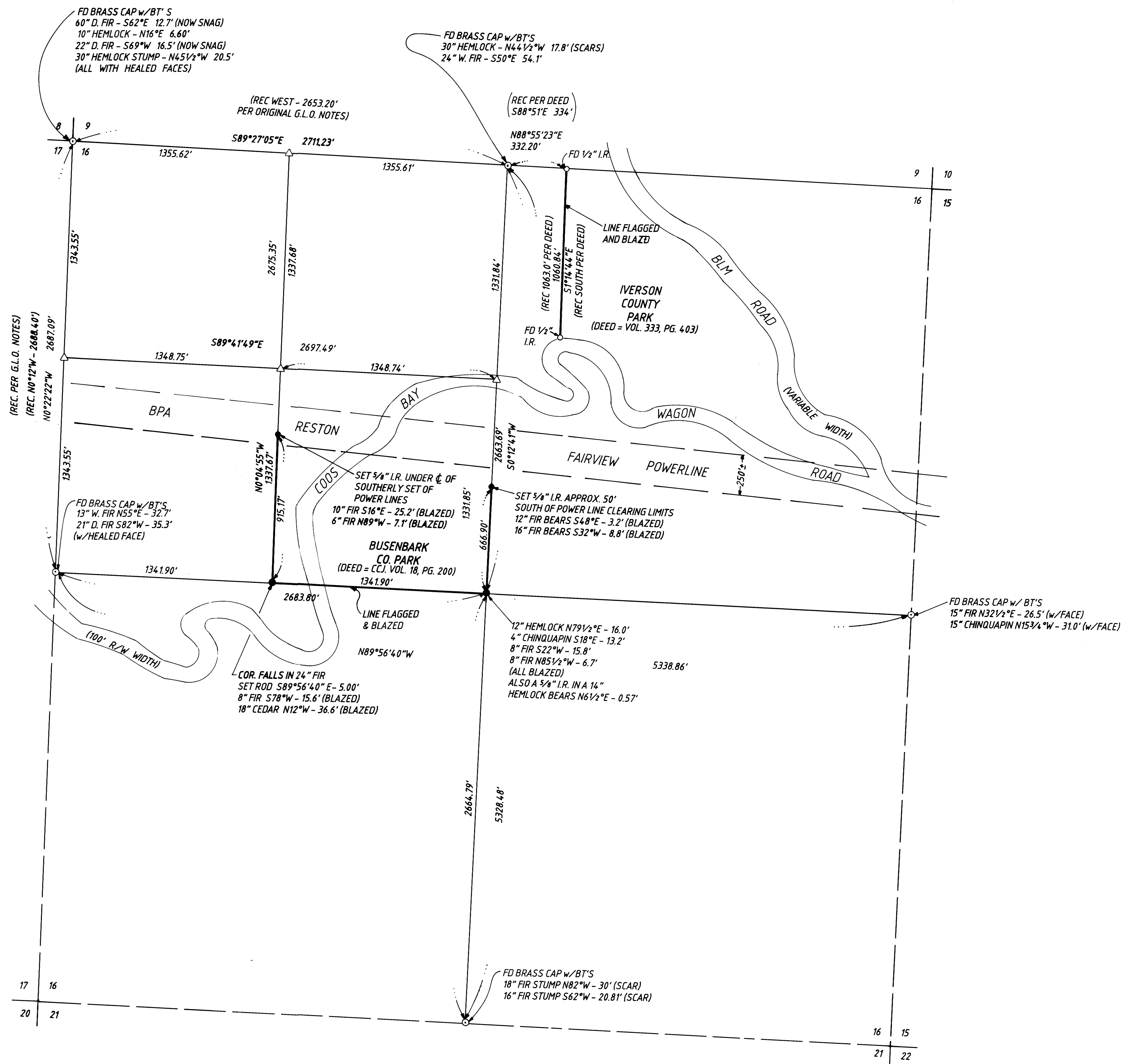
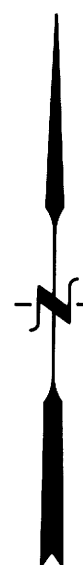
NARRATIVE:

SURVEY TO MARK AND FLAG THE WEST, SOUTH, AND EAST LINES OF BUSENBARK COUNTY PARK (DEED: CIRCUIT COURT JOURNAL VOLUME 18, PAGE 200) AND THE WEST LINE OF IVERSON PARK (DEED: VOLUME 333, PAGE 403). SECTION 16 WAS SURVEYED AND PROPORTIONED AS SHOWN. BASE BEARING WAS ESTABLISHED BY GPS OBSERVATION AND ROTATED FROM GRID TO TRUE ($\theta = -2^{\circ}09'30''$)

FIELD CREW: NEIL HIBBS, DAN HOLBORROW, KAHILIL WILSON, ROBERT POWELL
EQUIPMENT: TRIMBLE 4000ST GPS RECEIVERS AND NIKKON A-20 TOTAL STATION
OFFICE: ROMNEY WARE
DRAFTING: BETH MORGAN

LEGEND

- SET 3/4" x 30" I.R. w/ CAP MARKED "i.e. ENGINEERING"
- FD BRASS CAP UNLESS NOTED OTHERWISE
- △ COMPUTED POINT



	SURVEY IN THE N.W. 1/4 & N.E. 1/4 OF SECTION 16, T 28 S, R 8 W, WILLAMETTE MERIDIAN, DOUGLAS COUNTY, OREGON	
	SURVEYED FOR: SUPERIOR LUMBER P.O. BOX 250 GLENDALE, OREGON 97442	SURVEYED BY: DONALD A. BENTZ 839
SCALE: 1" = 400' DATE: JULY 1993	716-01	PAGE: 1 OF 1