

DETAIL
(NOT TO SCALE)

NARRATIVE

The purpose of this survey was to locate the monuments of Lot 3, Junction Subdivision, to show the relationship to the improvements on Lot 3 and Lot 4 and identify any trespass.

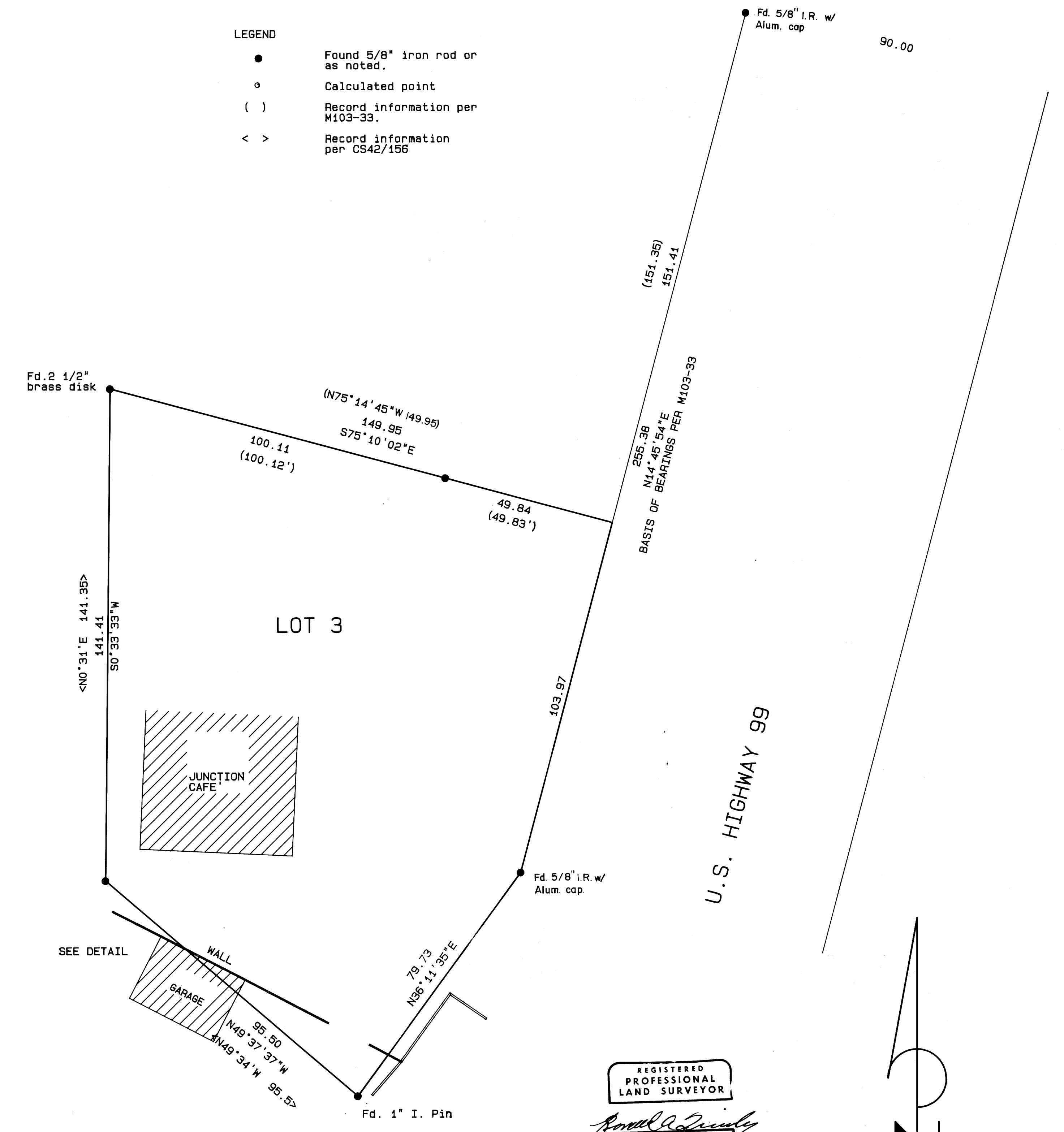
Monuments on the lines in question were found and tied in a closed traverse. The location of structures were determined by radial ties from the closed traverse and this map was prepared to show the relationships.

TRESPASS SURVEY
 IN LOT 3, JUNCTION SUBDIVISION
 NE 1/4, SECTION 21, T.28S., R.6W., W.M.
 4 FEB 1993
 FOR CHARLES JEFFERS

AA SURVEYING SERVICE, INC - 2566 N. STEPHENS STREET - ROSEBURG, OREGON 97470 - TEL (503) 672-2096

COUNTY SURVEYORS FILE DATA
 NOT REMOVE FROM OFFICE

- LEGEND
- Found 5/8" iron rod or as noted.
 - Calculated point
 - () Record information per M103-33.
 - < > Record information per CS42/156



REGISTERED
 PROFESSIONAL
 LAND SURVEYOR
Ronald A. Quimby
 OREGON
 JULY 14, 1988
 RONALD A. QUIMBY
 1654
 EXP 12-31-94

COUNTY SURVEYORS FILE DATA
 DO NOT REMOVE FROM OFFICE

