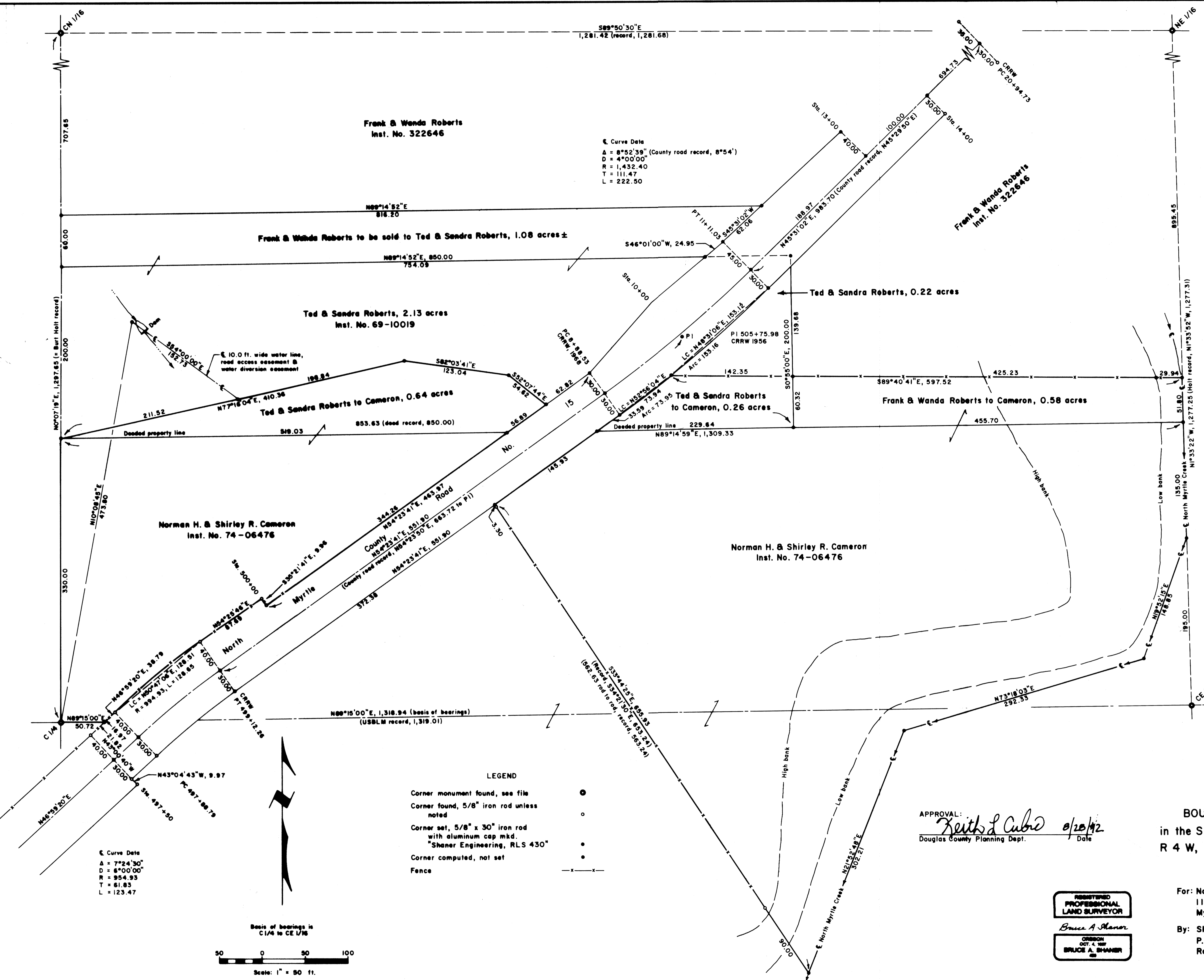


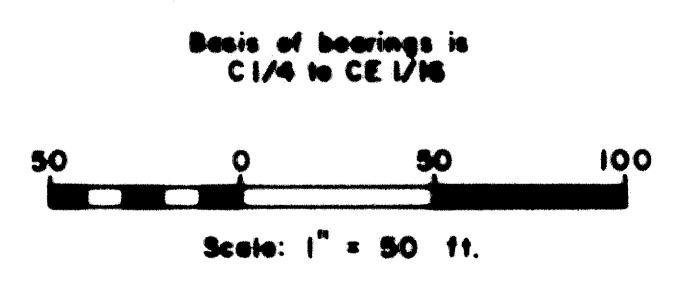
MAP FILE M.112 - 54  
 COUNTY SURVEYORS FILE DATA  
 NOT REMOVE FROM OFFICE



Curve Data  
 A = 8°52'39" (County road record, 8°54')  
 D = 470'00"  
 R = 1,432.40  
 T = 111.47  
 L = 222.50

Curve Data  
 A = 7°24'30"  
 D = 6°00'00"  
 R = 954.93  
 T = 61.85  
 L = 123.47

LEGEND  
 Corner monument found, see file ○  
 Corner found, 5/8" iron rod unless noted ○  
 Corner set, 5/8" x 30" iron rod with aluminum cap mkd. "Shaner Engineering, RLS 430" ●  
 Corner computed, not set ●  
 Fence — x — x



NARRATIVE:  
 The survey was conducted to monument and describe boundary line adjustments that were necessary to equal long standing lines of occupation with incorrect deed descriptions.  
 Surveys of record include:  
 USBLM subdivision of Section 27, 1981.  
 NE 1/4 subdivision by Burt Holt, 1982 (M92-23).  
 Douglas County Engineer Plats on County Road, 1956 and 1968.  
 Survey by Herb Northcraft, 1969 (M38-24).  
 The survey was accomplished with a Jena 0°00'01" theodolite and a Mac II electronic distance meter in the spring of 1992.

APPROVAL:  
*Keith L. Cubo* 8/26/92  
 Douglas County Planning Dept. Date

REGISTERED  
 PROFESSIONAL  
 LAND SURVEYOR  
 Bruce A. Shaner  
 OREGON  
 OCT. 4, 1987  
 BRUCE A. SHANER

BOUNDARY LINE ADJUSTMENT  
 in the SW 1/4 NE 1/4 of Section 27, T 28 S,  
 R 4 W, W. M., Douglas County, Oregon

For: Norman H. & Shirley R. Cameron  
 11202 N. Myrtle Road  
 Myrtle Creek, Oregon 97457  
 By: Shaner Engineering, Inc.  
 P. O. Box 1430  
 Roseburg, Oregon 97470

August 26, 1992