

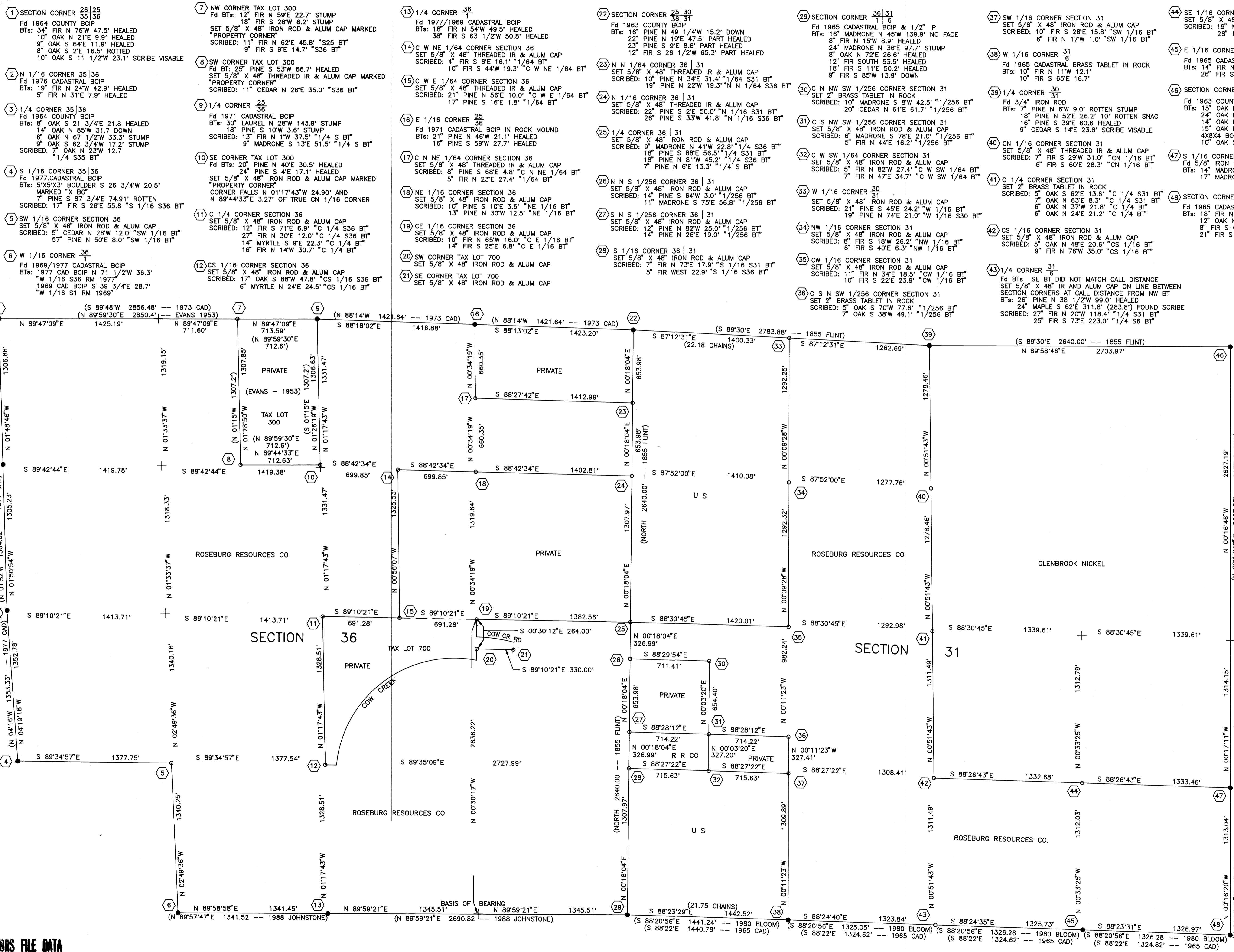
# RESURVEY & SUBDIVISION OF SECTION 36, T 30 S, R 7 W AND SECTION 31, T 30 S, R 6 W, W. M., OREGON

FOR ROSEBURG RESOURCES COMPANY

BY MARK F. SMALLLEY ROSEBURG RESOURCES CO P. O. BOX 1088 ROSEBURG, OREGON

COUNTY SURVEYORS FILE DATA  
DO NOT REMOVE FROM OFFICE

FILED  
AUG 10 1992  
COUNTY SURVEYOR  
COOS COUNTY, ORE.



- 1 SECTION CORNER 26|25  
Fd 1964 COUNTY BCIP  
BTS: 34" FIR N 76°W 47.5' HEALED  
10" OAK N 21°E 9.1' HEALED  
9" OAK S 64°E 11.9' HEALED  
8" OAK S 2°E 16.5' ROTTED  
10" OAK S 11°1/2'W 23.1' SCRIBE VISABLE
- 2 N 1/16 CORNER 35|36  
Fd 1976 CADASTRAL BCIP  
BTS: 19" FIR N 31°E 7.9' HEALED  
5" FIR N 31°E 7.9' HEALED
- 3 1/4 CORNER 35|36  
Fd 1964 COUNTY BCIP  
BTS: 8" OAK S 21°3/4'E 21.8 HEALED  
14" OAK N 85°W 31.7 DOWN  
6" OAK N 87°1/2'W 33.3' STUMP  
9" OAK S 62°3/4'W 17.2' STUMP  
SCRIBED: 7" OAK N 23°W 12.7  
1/4 S35 BT
- 4 S 1/16 CORNER 35|36  
Fd 1977 CADASTRAL BCIP  
BTS: 5'X5'X3' BOULDER S 26°3/4'W 20.5'  
MARKED "X BO"  
SCRIBED: 17" FIR S 87°3/4'E 74.91' ROTTEN  
PINE S 71°E 55.8' S 1/16 S36 BT
- 5 SW 1/16 CORNER SECTION 36  
SET 5/8" X 48" IRON ROD & ALUM CAP  
SCRIBED: 5" CEDAR N 26°W 12.0" SW 1/16 BT  
57" PINE N 50°E 8.0" SW 1/16 BT
- 6 W 1/16 CORNER 36  
Fd 1969/1977 CADASTRAL BCIP  
BTS: 1977 CAD BCIP N 71°1/2'W 36.3'  
W 1/16 S36 RM 1977  
1969 CAD BCIP S 39°3/4'E 28.7'  
W 1/16 S1 RM 1969
- 7 NW CORNER TAX LOT 300  
Fd BTs: 12" FIR N 59°E 22.7' STUMP  
18" FIR S 28°W 6.2' STUMP  
SET 5/8" X 48" IRON ROD & ALUM CAP MARKED  
"PROPERTY CORNER"  
SCRIBED: 11" FIR N 62°E 45.8" S25 BT  
9" FIR S 9°E 14.7" S36 BT
- 8 SW CORNER TAX LOT 300  
Fd BT: 25" PINE S 53°W 66.7' HEALED  
SET 5/8" X 48" THREADED IR & ALUM CAP MARKED  
"PROPERTY CORNER"  
SCRIBED: 11" CEDAR N 26°E 35.0" S36 BT
- 9 1/4 CORNER 35  
Fd 1971 CADASTRAL BCIP  
BTS: 30" LAUREL N 28°W 143.9' STUMP  
16" PINE S 10°W 3.8' STUMP  
SCRIBED: 13" FIR N 1°W 37.5' 1/4 S BT  
9" MADRONE S 13°E 51.5' 1/4 S BT
- 10 SE CORNER TAX LOT 300  
Fd BTs: 20" PINE N 40°E 30.5' HEALED  
24" PINE S 4°E 17.1' HEALED  
SET 5/8" X 48" IRON ROD & ALUM CAP MARKED  
"PROPERTY CORNER"  
CORNER FALLS N 01°17'43"W 24.90' AND  
N 89°44'33"E 3.27' OF TRUE CN 1/16 CORNER
- 11 C 1/4 CORNER SECTION 36  
SET 5/8" X 48" IRON ROD & ALUM CAP  
SCRIBED: 5" OAK S 62°E 13.6" C 1/4 S36 BT  
7" OAK N 63°E 8.3" C 1/4 S31 BT  
6" OAK N 37°W 21.8" C 1/4 BT  
6" OAK N 24°E 21.2" C 1/4 BT
- 12 CS 1/16 CORNER SECTION 36  
SET 5/8" X 48" IRON ROD & ALUM CAP  
SCRIBED: 17" OAK S 8°W 47.8" C 1/16 S36 BT  
6" MYRTLE N 24°E 24.5" CS 1/16 BT
- 13 1/4 CORNER 36  
Fd 1977/1969 CADASTRAL BCIP  
BTS: 18" FIR N 54°W 49.5' HEALED  
38" FIR S 63°1/2'W 50.8' HEALED
- 14 C W NE 1/64 CORNER SECTION 36  
SET 5/8" X 48" THREADED IR & ALUM CAP  
SCRIBED: 4" FIR S 6°E 16.1" 1/64 BT  
10" FIR S 44°W 19.3" C W NE 1/64 BT
- 15 C W E 1/64 CORNER SECTION 36  
SET 5/8" X 48" THREADED IR & ALUM CAP  
SCRIBED: 21" PINE N 56°E 10.0" C W E 1/64 BT  
17" PINE S 16°E 1.8" 1/64 BT
- 16 E 1/16 CORNER 36  
Fd 1971 CADASTRAL BCIP IN ROCK MOUND  
BTS: 21" PINE N 56°E 10.0" HEALED  
16" PINE S 59°W 27.7' HEALED
- 17 C N NE 1/64 CORNER SECTION 36  
SET 5/8" X 48" IRON ROD & ALUM CAP  
SCRIBED: 8" PINE S 68°E 4.8" C N NE 1/64 BT  
5" FIR N 23°E 27.4" 1/64 BT
- 18 NE 1/16 CORNER SECTION 36  
SET 5/8" X 48" IRON ROD & ALUM CAP  
SCRIBED: 10" PINE S 10°E 3.6" NE 1/16 BT  
13" PINE N 30°W 12.5" NE 1/16 BT
- 19 CE 1/16 CORNER SECTION 36  
SET 5/8" X 48" IRON ROD & ALUM CAP  
SCRIBED: 10" FIR N 85°W 18.0" C E 1/16 BT  
14" FIR S 25°E 6.8" C E 1/16 BT
- 20 SW CORNER TAX LOT 700  
SET 5/8" X 48" IRON ROD & ALUM CAP
- 21 SE CORNER TAX LOT 700  
SET 5/8" X 48" IRON ROD & ALUM CAP
- 22 SECTION CORNER 25|30  
Fd 1963 COUNTY BCIP  
BTS: 16" PINE N 49°1/4'W 15.2' DOWN  
22" PINE N 19°E 47.5' PART HEALED  
23" PINE S 9°E 8.6' PART HEALED  
12" FIR S 26°1/2'W 65.3' PART HEALED
- 23 N N 1/64 CORNER 36 | 31  
SET 5/8" X 48" THREADED IR & ALUM CAP  
SCRIBED: 10" PINE N 34°E 31.4" 1/64 S31 BT  
19" PINE N 22°W 19.3" N 1/64 S36 BT
- 24 N 1/16 CORNER 36 | 31  
SET 5/8" X 48" THREADED IR & ALUM CAP  
SCRIBED: 10" PINE N 34°E 31.4" 1/64 S31 BT  
26" PINE S 33°W 41.8" N 1/16 S36 BT
- 25 1/4 CORNER 36 | 31  
SET 5/8" X 48" IRON ROD & ALUM CAP  
SCRIBED: 9" MADRONE N 41°W 22.8" 1/4 S36 BT  
18" PINE S 88°E 56.5" 1/4 S31 BT  
18" PINE N 81°W 45.2" 1/4 S36 BT  
7" PINE N 6°E 13.3" 1/4 S BT
- 26 N N S 1/256 CORNER 36 | 31  
SET 5/8" X 48" IRON ROD & ALUM CAP  
SCRIBED: 14" PINE S 64°W 3.0" 1/256 BT  
11" MADRONE S 75°E 56.8" 1/256 BT
- 27 S N S 1/256 CORNER 36 | 31  
SET 5/8" X 48" IRON ROD & ALUM CAP  
SCRIBED: 12" PINE N 82°W 25.0" 1/256 BT  
14" PINE N 26°E 19.0" 1/256 BT
- 28 S 1/16 CORNER 36 | 31  
SET 5/8" X 48" IRON ROD & ALUM CAP  
SCRIBED: 7" FIR N 73°E 17.9" S 1/16 S31 BT  
5" FIR WEST 22.9" S 1/16 S36 BT
- 29 SECTION CORNER 36|31  
Fd 1965 CADASTRAL BCIP & 1/2" IP  
BTS: 16" MADRONE N 45°W 139.9' NO FACE  
8" FIR N 15°W 8.9' HEALED  
24" MADRONE N 36°E 97.7' STUMP  
8" OAK N 72°E 26.8' HEALED  
12" FIR SOUTH 53.5' HEALED  
18" FIR S 11°E 50.2' HEALED  
9" FIR S 85°W 13.9' DOWN
- 30 C N NW SW 1/256 CORNER SECTION 31  
SET 2" BRASS TABLET IN ROCK  
SCRIBED: 10" MADRONE S 8°W 42.5" 1/256 BT  
20" CEDAR N 61°E 61.7" 1/256 BT
- 31 C S NW SW 1/256 CORNER SECTION 31  
SET 5/8" X 48" IRON ROD & ALUM CAP  
SCRIBED: 6" MADRONE S 78°E 21.0" 1/256 BT  
5" FIR N 44°E 16.2" 1/256 BT
- 32 C W SW 1/64 CORNER SECTION 31  
SET 5/8" X 48" IRON ROD & ALUM CAP  
SCRIBED: 5" FIR N 82°W 27.4" C W SW 1/64 BT  
7" FIR N 47°E 34.7" C W SW 1/64 BT
- 33 W 1/16 CORNER 30  
SET 5/8" X 48" IRON ROD & ALUM CAP  
SCRIBED: 21" PINE S 45°E 24.2" W 1/16 BT  
19" PINE N 74°E 21.0" W 1/16 S30 BT
- 34 NW 1/16 CORNER SECTION 31  
SET 5/8" X 48" IRON ROD & ALUM CAP  
SCRIBED: 11" FIR N 34°E 18.5" CW 1/16 BT  
10" FIR S 22°E 23.9" CW 1/16 BT
- 35 CW 1/16 CORNER SECTION 31  
SET 5/8" X 48" IRON ROD & ALUM CAP  
SCRIBED: 11" FIR N 34°E 18.5" CW 1/16 BT  
10" FIR S 22°E 23.9" CW 1/16 BT
- 36 C S N SW 1/256 CORNER SECTION 31  
SET 2" BRASS TABLET IN ROCK  
SCRIBED: 5" OAK S 70°W 77.6" 1/256 BT  
7" OAK S 38°W 49.1" 1/256 BT
- 37 SW 1/16 CORNER SECTION 31  
SET 5/8" X 48" IRON ROD & ALUM CAP  
SCRIBED: 10" FIR S 28°E 15.8" SW 1/16 BT  
6" FIR N 17°W 1.0" SW 1/16 BT
- 38 W 1/16 CORNER 31  
Fd 1965 CADASTRAL BRASS TABLET IN ROCK  
BTS: 10" FIR N 11°W 12.1"  
10" FIR S 65°E 16.7'
- 39 1/4 CORNER 30  
Fd 3/4" IRON ROD  
BTS: 7" PINE N 6°W 9.0' ROTTEN STUMP  
18" PINE N 52°E 26.2' 10" ROTTEN SNAG  
16" PINE S 39°E 60.6 HEALED  
9" CEDAR S 14°E 23.8' SCRIBE VISABLE
- 40 CN 1/16 CORNER SECTION 31  
SET 5/8" X 48" THREADED IR & ALUM CAP  
SCRIBED: 7" FIR S 29°W 31.0" CN 1/16 BT  
6" FIR S 60°E 28.3" CN 1/16 BT
- 41 C 1/4 CORNER SECTION 31  
SET 2" BRASS TABLET IN ROCK  
SCRIBED: 5" OAK S 62°E 13.6" C 1/4 S31 BT  
7" OAK N 63°E 8.3" C 1/4 S31 BT  
6" OAK N 37°W 21.8" C 1/4 BT  
6" OAK N 24°E 21.2" C 1/4 BT
- 42 CS 1/16 CORNER SECTION 31  
SET 5/8" X 48" IRON ROD & ALUM CAP  
SCRIBED: 5" OAK N 48°E 20.6" CS 1/16 BT  
9" FIR N 76°W 35.0" CS 1/16 BT
- 43 1/4 CORNER 31  
Fd BTs SE BT DID NOT MATCH CALL DISTANCE  
SECTION CORNERS AT CALL DISTANCE FROM NW BT  
BTS: 26" PINE N 38°1/2'W 99.0' HEALED  
24" MAPLE S 62°E 311.8' (283.8') FOUND SCRIBE  
SCRIBED: 27" FIR N 20°W 118.4" 1/4 S31 BT  
25" FIR S 73°E 223.0" 1/4 S6 BT
- 44 SE 1/16 CORNER SECTION 31  
SET 5/8" X 48" IRON ROD & ALUM CAP  
SCRIBED: 19" MADRONE S 28°E 42.9" SE 1/16 BT  
28" FIR S 69°W 30.0" SE 1/16 S31 BT
- 45 E 1/16 CORNER 31  
Fd 1965 CADASTRAL BCIP  
BTS: 14" FIR N 14°W 40.9'  
26" FIR S 23°W 27.1'
- 46 SECTION CORNER 30 | 32  
Fd 1963 COUNTY BCIP & STONE  
BTS: 15" OAK N 73°W 153.1'  
24" OAK N 60°W 20.0' HEALED  
14" OAK N 80°W 33.1' TAGGED NO FACE  
15" OAK N 7°E 238.9' HEALED  
4X8X4 BOULDER N 36°E 52.2'  
10" OAK S 19°W 36.0' HEALED
- 47 S 1/16 CORNER 31 | 32  
Fd 5/8" IRON ROD  
BTS: 14" MADRONE N 60°E 36.5' SCRIBE VISABLE  
17" MADRONE S 59°W 20.6' SCRIBE VISABLE
- 48 SECTION CORNER 31 | 32  
Fd 1965 CADASTRAL BCIP  
BTS: 18" FIR N 3°1/2'W 17.2'  
12" OAK N 73°E 23.8'  
8" FIR S 62°E 17.2' SNAG  
21" FIR S 16°W 18.5'

**LEGEND**

- MONUMENT FOUND AS NOTED
- SET 5/8" IRON ROD & ALUM CAP MARKED "LS 2354" UNLESS OTHERWISE NOTED
- SECTION OR PROPERTY LINE
- ( ) RECORD DATA
- + POSITION COMPUTED, NOT SET

400 0 400 800 1200  
GRAPHIC SCALE - 1" = 400'

REGISTERED PROFESSIONAL LAND SURVEYOR  
*Mark F. Smallley*  
OREGON  
JULY 1988  
MARK F. SMALLLEY  
2354

**NARRATIVE**

THE PURPOSE OF THIS SURVEY WAS THE SUBDIVISION OF SECTION 36, T 30 S, R 7 W, AND SECTION 31, T 30 S, R 6 W, W. M. AND THE BLAZING AND PAINTING OF ROSEBURG RESOURCES PROPERTY LINES.

THE CONTROL FOR THE SUBDIVISION OF SECTION 36 WAS THE NORTHEAST, NORTHWEST AND SOUTHEAST SECTION CORNERS, THE WEST, SOUTH AND NORTH ONE QUARTER CORNERS, THE SOUTH ONE SIXTEENTH BETWEEN SECTIONS 35 AND 36, THE EAST ONE SIXTEENTH BETWEEN SECTIONS 25 AND 36 AND THE WEST ONE SIXTEENTH BETWEEN SECTIONS 26 AND 31, ALL FOUND AS NOTED.

THE PROPERTY CORNERS SET BY ARTHUR EVANS IN 1953 FOR THE E 1/2 OF THE NE 1/4 OF THE NW 1/4 WERE ACCEPTED AS CONTROLLING. THE CORNERS WERE NOT ESTABLISHED BY SUBDIVISION OF THE SECTION, BUT THEIR LOCATION WAS ACCEPTED BY AGREEMENT BETWEEN THE LAND OWNERS AS STATED IN EVANS PLAT (M 11/60). THESE CORNERS WERE ALSO USED RECENTLY FOR CUTTING LINES. I MONUMENTED THE NW CORNER OF THE E 1/2 OF THE NE 1/4 OF THE NW 1/4 FROM EVANS BEARING TREES, WHICH I PUT THE CORNER NORTH OF THE SECTION LINE BY 0.67 FEET. I TREATED THIS CORNER AS A "CLOSING CORNER" AND DID NOT USE IT TO DETERMINE THE NORTH LINE OF SECTION 36.

NO EVIDENCE OF THE ORIGINAL EAST ONE QUARTER CORNER AS SET BY FLINT IN 1855 WAS FOUND. I SET THE EAST ONE QUARTER CORNER BY SINGLE PROPORTION.

THE SOUTHWEST AND SOUTHEAST CORNERS FOR THE PORTION OF TAX LOT 700 IN THE NE 1/4 OF THE SE 1/4 OF SECTION 36 WERE SET USING THE EAST-WEST CENTERLINE OF THE SECTION AS THE BASIS OF BEARING FOR DEED CALL (REF. NO. 69-08699) TO THE POINT OF BEGINNING, "20 CHAINS WEST OF THE QUARTER POST ON THE EAST BOUNDARY OF SECTION 36". THE NORTHWEST AND NORTHEAST CORNERS OF THIS PARCEL WERE NOT SET SINCE THE CAPTION OF THE DEED LIMITS THE PARCEL TO THE PORTION SOUTH OF THE COUNTY ROAD AND THESE CORNERS WOULD FALL TO THE NORTH OF THE COUNTY ROAD.

THE CONTROL FOR THE SUBDIVISION OF SECTION 31 WAS THE NORTHWEST, NORTHEAST, SOUTHWEST AND SOUTHEAST SECTION CORNERS, THE NORTH AND SOUTH ONE QUARTER CORNERS, THE SOUTH ONE SIXTEENTH BETWEEN SECTIONS 31 AND 32 AND THE WEST AND EAST ONE SIXTEENTHS BETWEEN SECTIONS 31 AND 6, ALL FOUND AS NOTED.

THE BASIS OF BEARING IS THE EAST HALF OF THE SOUTH LINE OF SECTION 36 AS SURVEYED IN 1988 BY ROSEBURG RESOURCES COMPANY (M 106-52).

THIS SURVEY WAS PERFORMED MAY THROUGH JULY, 1992, USING A NIKON NTD-4 TOTAL STATION TO RUN CLOSED LOOP TRAVERSES.

COUNTY SURVEYORS FILE DATA  
DO NOT REMOVE FROM OFFICE