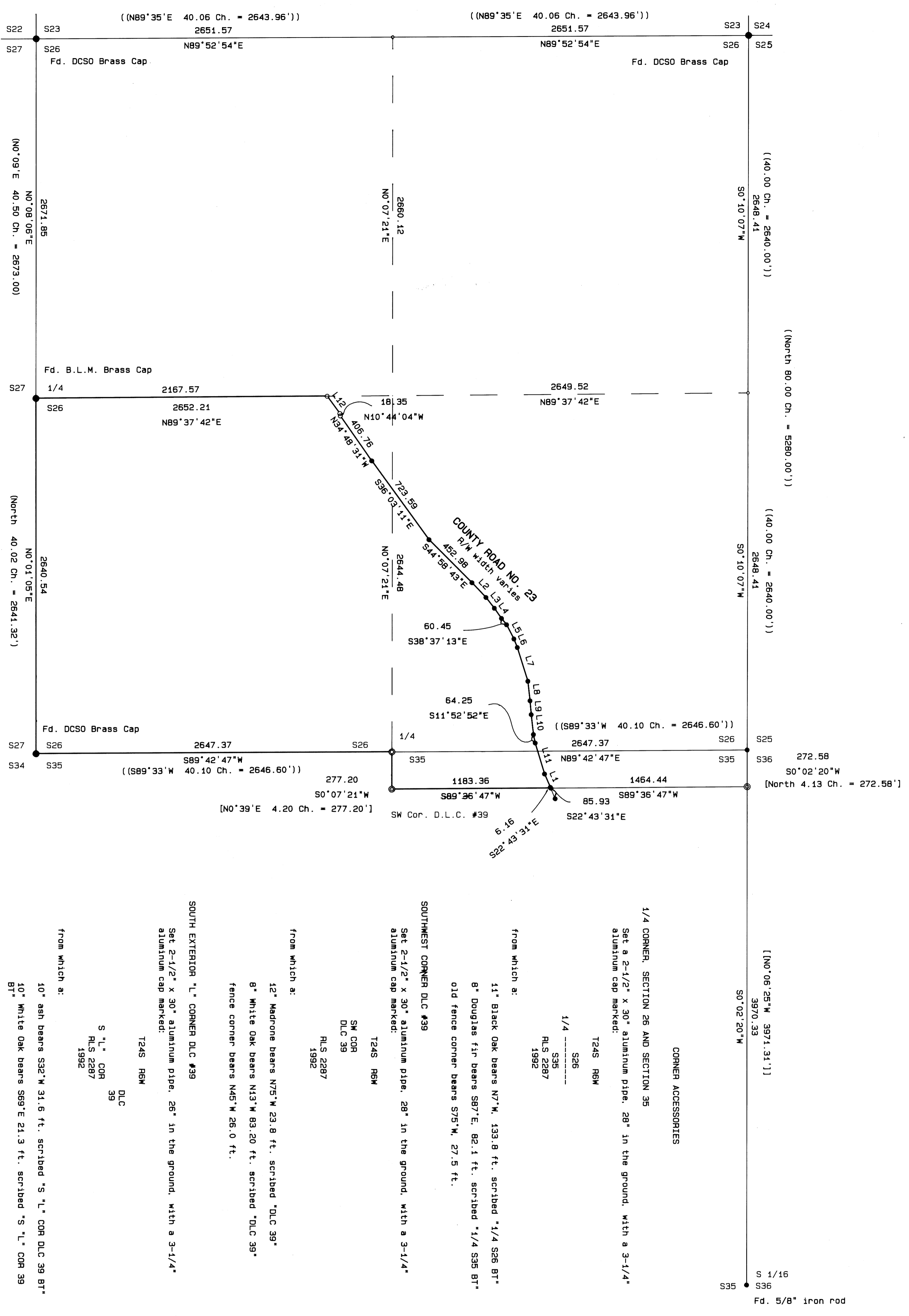


COUNTY SURVEYORS FILE DATA
DO NOT REMOVE FROM OFFICE

BOUNDARY SURVEY

IN THE SE 1/4 AND THE SW 1/4, SECTION 26 AND
THE NE 1/4, SECTION 35, T24S, R6W, W.M.M.
FOR W.D. HENRY
6 JUL 1992

FILED
JUL 9 1992
COUNTY SURVEYOR
DOUGLAS COUNTY, ORE.



- CORNER ACCESSORIES**
- 1/4 CORNER, SECTION 26 AND SECTION 35
Set a 2-1/2" x 30" aluminum pipe, 28" in the ground, with a 3-1/4" aluminum cap marked:
T24S R6W
 - 1/4
S36
R.L.S. 2287
1992
 - from which a:
11" Black Oak bears N7°W, 133.8 ft., scribed "1/4 S26 BT"
8" Douglas fir bears S87°E, 82.1 ft., scribed "1/4 S35 BT"
old fence corner bears S75°W, 27.5 ft.
 - SOUTHWEST CORNER D.L.C. #39**
Set 2-1/2" x 30" aluminum pipe, 28" in the ground, with a 3-1/4" aluminum cap marked:
T24S R6W
 - SW COR. D.L.C. #39
 - from which a:
12" Madrone bears N75°W 23.8 ft., scribed "DLC 39"
8" White Oak bears N13°W 83.20 ft., scribed "DLC 39"
fence corner bears N45°W 26.0 ft.
 - SOUTH EXTERIOR "L" CORNER D.L.C. #39**
Set 2-1/2" x 30" aluminum pipe, 28" in the ground, with a 3-1/4" aluminum cap marked:
T24S R6W
 - from which a:
10" ash bears S32°W 31.6 ft., scribed "S "L" COR D.L.C. 39 BT"
10" White Oak bears S89°E 21.3 ft., scribed "S "L" COR 39 BT"

- LEGEND**
- Found 5/8" iron rod unless noted.
 - Found Brass Cap as noted.
 - Set 5/8" x 30" iron rod w/ plastic cap marked "AA SURVEYING INC."
 - Set monument as noted in Corner Descriptions.
 - Record information per Bureau of Land Management, Dependent Resurvey approved February 5, 1982.
 - Record information per G.L.O. Survey of Township 24 South, Range 6 West dated 1953.
 - Record information per G.L.O. Survey of Donation Land Claims in T24S, R6W dated 1860.
 - Record information per M70-59.
 - Calculated Point.

NARRATIVE

The purpose of this survey is to monument that portion of the property described in Deed Reference Number 85-05051 of the Deed Records of Douglas County, West of County Road Number 23.

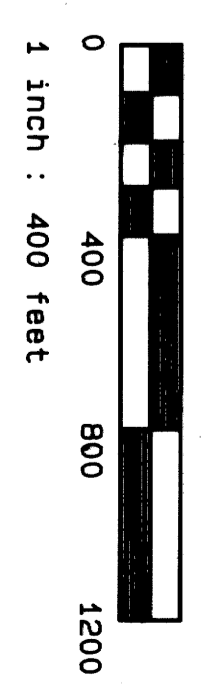
The exterior lines of Section 26 were established using the found monuments as shown. Section 26 was subdivided per the Manual of Instructions, 1973 and the Southwest 1/4 of Section 26 was established. After a diligent but futile search for the corners on the south line of D.L.C. #39, the Southwest Corner was determined from record distances from the One-Quarter Corner common to Section 26 and Section 35 and projected on the bearing of the North-South center line of Section 26 per the G.L.O. Survey of 1860. The South Exterior "L" Corner was set from the Section Corner common to Sections 25, 26, 35 and 36 at record plat distance and on line between the Section Corner and the South 1/16 Corner common to Section 35 and Section 36.

The Right-of-Way of County Road Number 23 was established using found monuments per Douglas County Right-of-Way Maps. The monuments that were set on the Right-of-Way were established by calculated record angle and distance from the found monuments. The unmonumented portion of County Road Number 23 at the intersection of the Right-of-Way with the north line of the Southwest Quarter of Section 26 was established at 30 feet parallel to the existing traveled way.

REGISTERED
PROFESSIONAL
LAND SURVEYOR
Mark A. Heimbürger
OSGON
JULY 16, 1987
MARK A. HEIMBURGER
2287

LINE	DISTANCE	BEARING
L1	109.10	S23°34'58"E
L2	161.38	S43°24'53"E
L3	192.54	S35°15'28"E
L4	119.05	S27°20'09"E
L5	69.09	S21°41'10"E
L6	261.88	S7°24'28"E
L7	103.05	S4°49'35"E
L8	148.52	S6°23'31"E
L9	240.15	N16°50'46"W
L10	139.70	S36°09'32"E
L11		
L12		

BASES OF BEARINGS: TRUE NORTH PER
STATE PLANE COORDINATE SYSTEM
OREGON SOUTH ZONE



COUNTY SURVEYORS FILE DATA
DO NOT REMOVE FROM OFFICE