

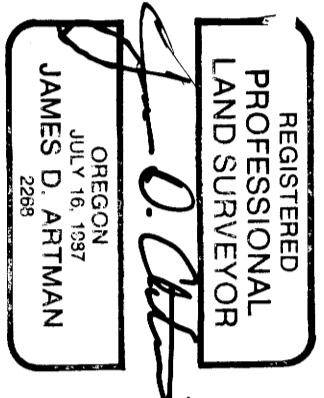
S.E. 1/4, SEC. 4, T. 23 S., R. 4 W., W. M.

**COUNTY SURVEYORS FILE DATA
DO NOT REMOVE FROM OFFICE**

5/8" IRON ROD WITH CAP
MARKED "BENTZ INC."

SURVEY FOR: DOUGLAS COUNTY PUBLIC WORKS
ENGINEERING DEPARTMENT
DOUGLAS COUNTY COURTHOUSE
ROSEBURG, OREGON 97470

SURVEY BY: JAMES ARTMAN SURVEYING
P.O. BOX 576
WINSTON, OREGON 97496
(503) 679-7176



NARRATIVE

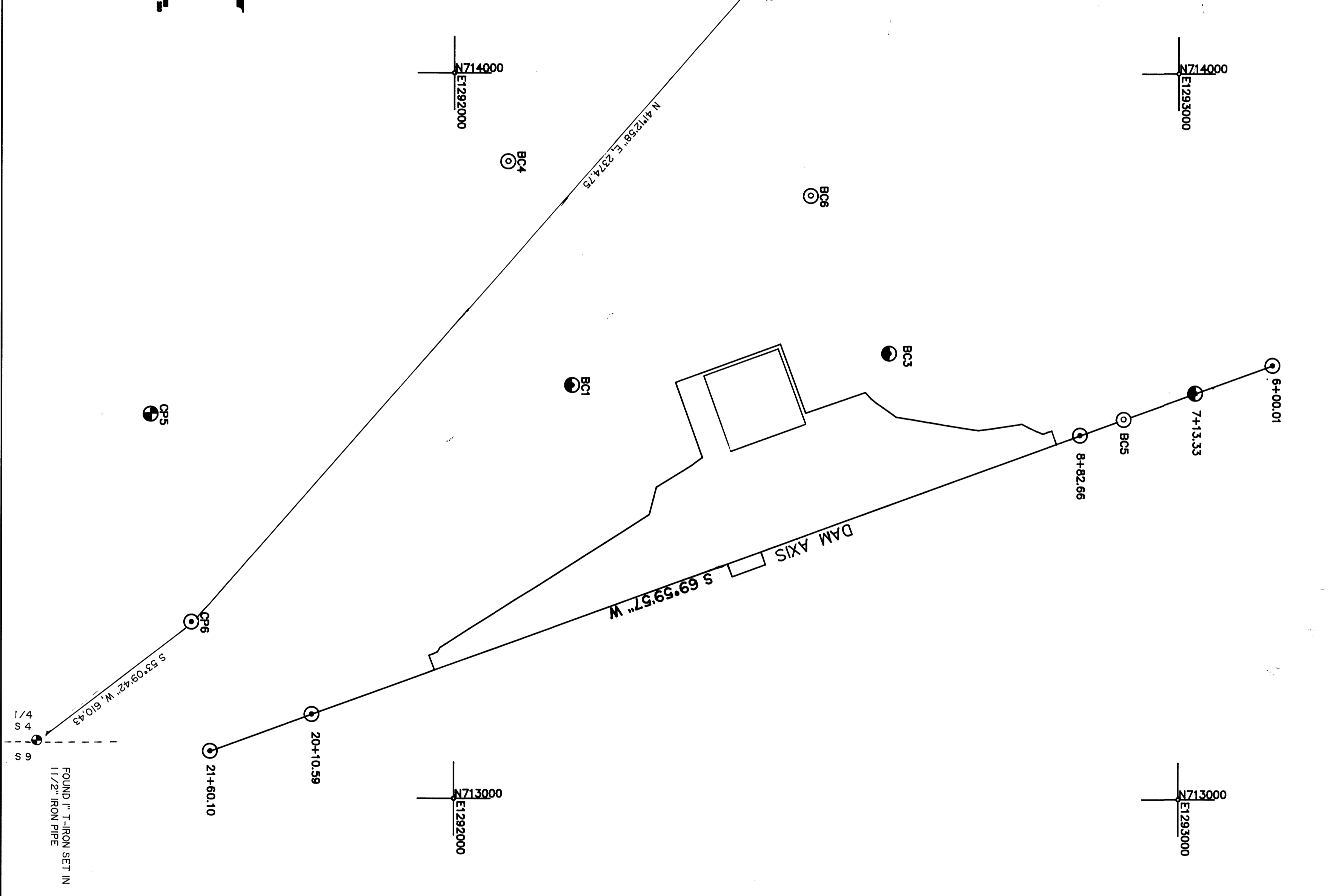
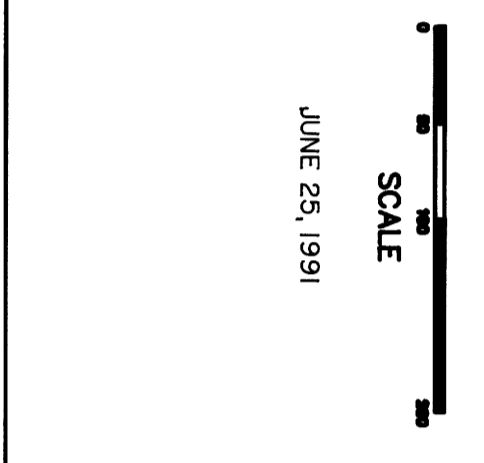
PURPOSE: TO SET CONTROL MONUMENTS FOR CONSTRUCTION OF FUTURE DAM.

BASE OF BEARING: THE BASE WAS DETERMINED FROM SURVEY M 106-58 AB B USING CONTROL POINT # 4, CONTROL POINT # 6, WITH BASE BEING GRID BEARING BASED ON OREGON STATE PLANE COORDINATES SOUTH ZONE. BEZEL DAM CONTROL POINTS NOT SHOWN ON M 106-58 MAY BE OBTAINED FROM DOUGLAS COUNTY WATER RESOURCES

- LEGEND**
- FOUND 3" BRASS CAP IN CONCRETE MARKED " DOUGLAS COUNTY ENGINEERING " AND CONTROL STATION NUMBER
 - ⊙ SET 3" BRASS CAP IN CONCRETE MARKED " RLS 2268 " AND CONTROL STATION NUMBER
 - ⊙ SET 3" BRASS CAP IN CONCRETE MARKED " AND CONTROL STATION NUMBER
 - ⊙ FOUND 5/8" IRON ROD WITH " CAP MARKED " DOUG. CO. ENG. DEPT. "

HORIZONTAL CONTROL OCS 27 SOUTH ZONE		POINT	NORTHING	EASTING
CP4 (#5 REB)			715028.93	1293202.49
CP5 (#5 REB)			713528.48	1291581.19
CP6 (BRASS CAP)			713242.57	1291637.77
BC1 (BRASS CAP)			713569.14	1292162.16
BC3 (BRASS CAP)			713613.64	1292599.70
BC4 (BRASS CAP)			713877.89	1292078.89
BC5 (BRASS CAP)			713523.04	1292924.09
BC6 (BRASS CAP)			713830.84	1292491.34
6+00.01 (BRASS CAP)			713597.73	1293129.27
7+13.33 (BRASS CAP)			713558.97	1293022.80
8+82.66 (BRASS CAP)			713501.06	1292863.70
20+10.59 (BRASS CAP)			713115.33	1291803.92
21+60.10 (BRASS CAP)			713064.19	1291663.44

*Affidavit of Correction
Filed 9/30/91 Clerk Beaudine
Book 1153 Pg 406*



**COUNTY SURVEYORS FILE DATA
DO NOT REMOVE FROM OFFICE**

DOUGLAS COUNTY, OREGON
MILLTOWN HILL DAM
DAMSITE SURVEY CONTROL
ART-CNTL.DWG