

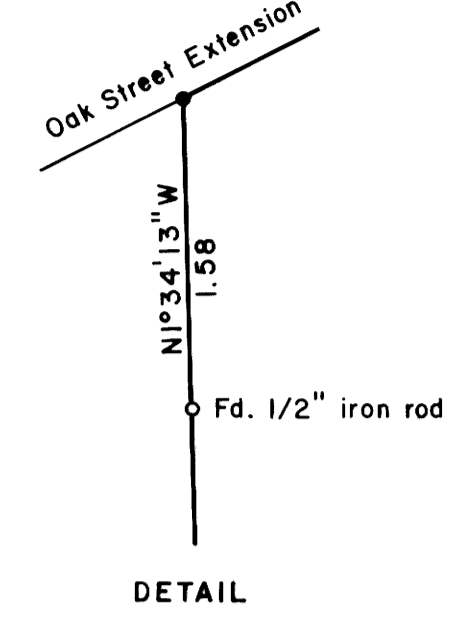
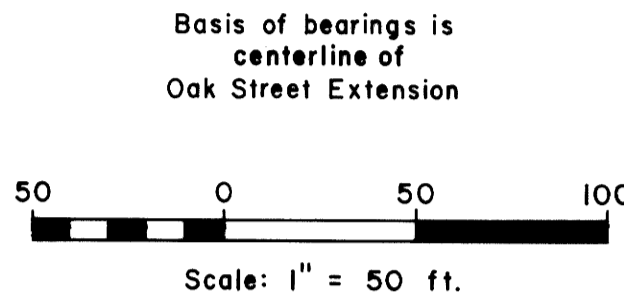
COUNTY SURVEYORS FILE DATA
DO NOT REMOVE FROM OFFICE

JUN 14 1991

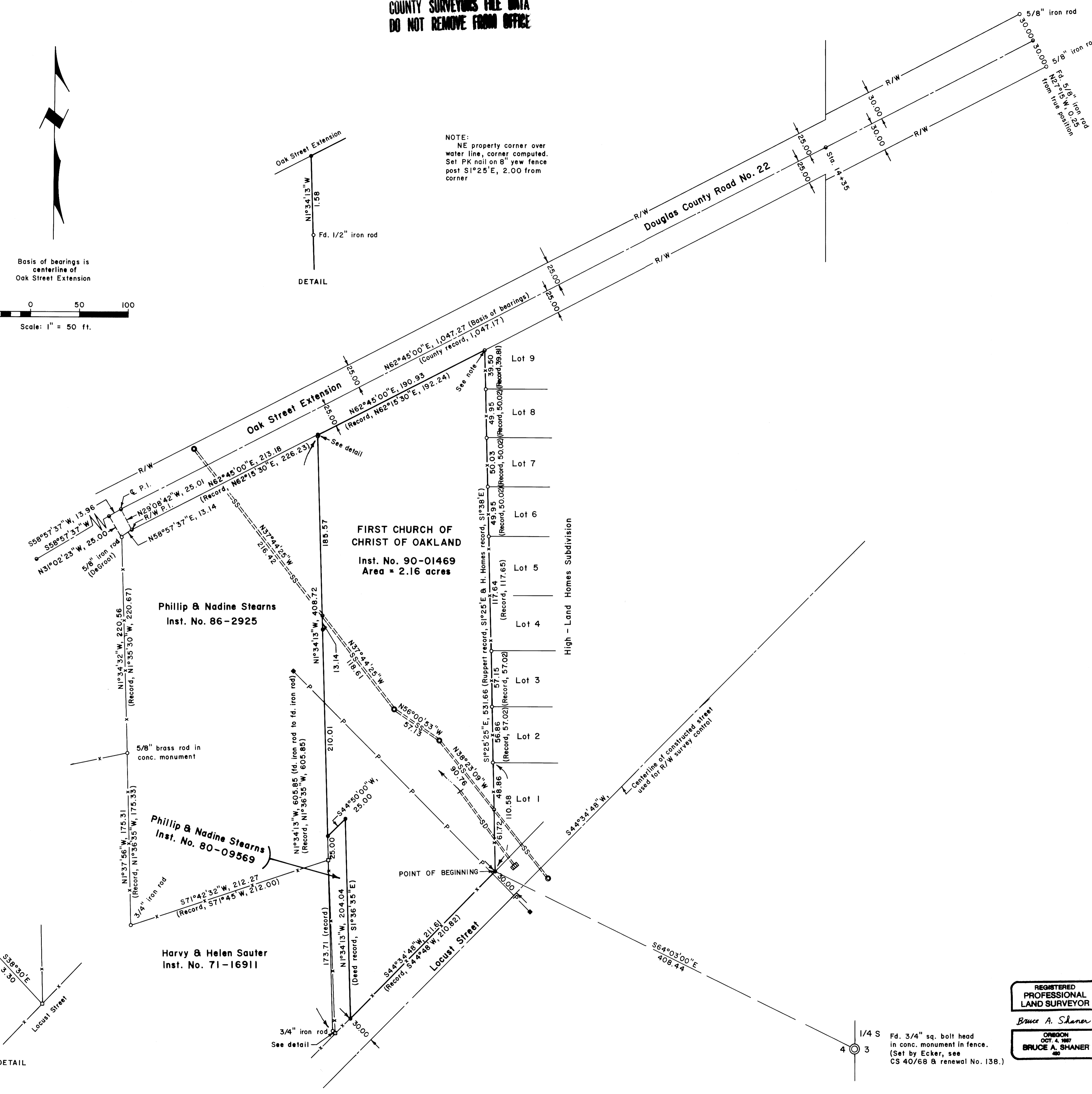
NARRATIVE:
The property and surrounding controlling parcels were surveyed by previous surveyors as follows:

County Surveyor File No.	Date	Surveyor
M 66-2	July, 1977	Wm. Ruppert
M 77-59	March, 1979	Wm. Ruppert
M 98-80	June, 1985	K. O. DeGroot
Vol. 7, pg. 3		
High-Land Homes Subd.	March, 1947	Wm. W. Elmer

Oak Street was surveyed and monumented by the Douglas County Engineer, (George E. Grubb), in February, 1957. See Road Plan & Profile in County Surveyor Records. Surveyor DeGroot resurveyed this in his M 98-80 survey.
Locust Street was reconstructed to Urban Standards (curb, gutter & paved) in 1979 by Douglas County. (See Plan & Profile on file with County Engineer.) A paper by Jack Liles, County Right of Way Researcher shows the road was adopted as County Road by resolution with a 60 foot right of way by statutory law. See Road Record Vol. 2, pgs. 338 thru 344 and Court Journal Vol. 3, pg. 376.
The survey work was done in May and June, 1991, with a Jena O'OO'O1" theodolite and a "Mac II" electronic distance meter.



NOTE:
NE property corner over water line, corner computed. Set PK nail on 8' yew fence post S1°25' E, 2.00 from corner



LEGEND

Corner found, 3/4" iron pipe unless noted	○
Corner set, 5/8" x 30" iron rod with aluminum cap mkd. "Shaner Engr. RLS 430"	●
Point computed, not set	○
Fence corner	□
Fence line	-x-x-
Manhole	⊙
Sanitary sewer, centerline of a 15.0 foot wide sanitary sewer easement, Inst. No. 69-7086	==SS==
Storm drain	==SD==
Power pole	■
Power line, centerline of a PP&L 15.0 foot wide power line easement, Inst. No. 80-07432	-P-P-

COUNTY SURVEYORS FILE DATA
DO NOT REMOVE FROM OFFICE

PROPERTY LINE SURVEY
in the SE 1/4 NE 1/4 of Section 4, T 25 S, R 5 W, W. M.,
City of Oakland, Douglas County, Oregon
For: First Church of Christ of Oakland
P. O. Box 758
Oakland, Oregon 97462
By: Shaner Engineering, Inc.
P. O. Box 1430
Roseburg, Oregon 97470

REGISTERED
PROFESSIONAL
LAND SURVEYOR
Bruce A. Shaner
OREGON
OCT. 4, 1987
BRUCE A. SHANER
400

1/4 S
4 3
Fd. 3/4" sq. bolt head in conc. monument in fence. (Set by Ecker, see CS 40/68 & renewal No. 138.)

June 12, 1991