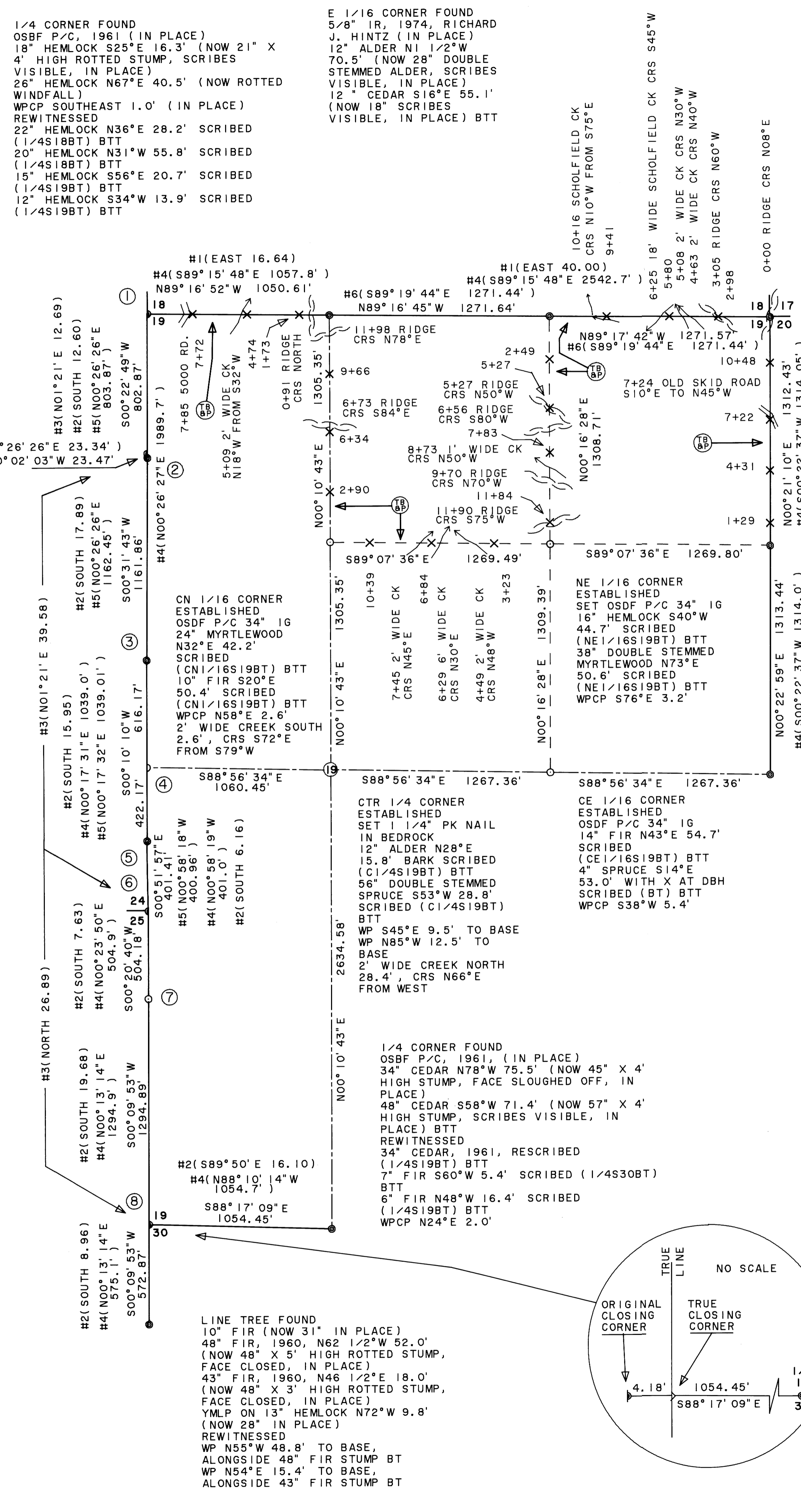


- ① SECTION CORNER FOUND  
OSBF P/C, 1960, AND STONE ON NORTH EDGE (IN PLACE)  
12" FIR (ORIG) N60°W 24 LKS (NOW 47" X 10" HIGH STUMP, FACE PARTIALLY CLOSED AND BURNT, SOME SCRIBES VISIBLE, IN PLACE) U.S. PLYWOOD TAG 50" FIR (ORIG) N60°W 15.8' (NOW N46°W 14.3', 47" X 10" HIGH STUMP, FACE PARTIALLY CLOSED AND BURNT) U.S. PLYWOOD TAG  
12" HEMLOCK 1910, N72°E 7LKS (NOW UPROOTED STUMP, AXE WORK VISIBLE)  
23" FIR, 1960, S09°E 11.5' (NOW 31" FACE CLOSED, IN PLACE) U.S. PLYWOOD TAG  
31" FIR, 1960, N88°W 10.5' (NOW 36" X 3" HIGH STUMP, FACE CLOSED, IN PLACE) U.S. PLYWOOD TAG REWITNESSED  
5" FIR N66°E 14.9' SCRIBED (T22SR11WS18BT) BTT  
WP N33°E 6.3' TO BASE  
WP S70°E 4.9' TO BASE  
WPCP S85°W 2.2'
- ② 1/4 CORNER FOUND  
OSBF P/C, 1971 (IN PLACE)  
23" BURNT FIR STUMP S79 1/2°W 99.22' (SCRIBES VISIBLE, IN PLACE)  
37" HEMLOCK STUMP N08°W 98.1' (NOW 33" BADLY DECAYED, SCRIBES FOUND ON SLABS AT BASE OF STUMP, IN PLACE)  
WPCP NORTH 4.0' (IN PLACE)  
REWITNESSED  
16" FIR N19°W 26.8' SCRIBED (1/4S24BT) BTT  
9" FIR S82°W 13.7' SCRIBED (1/4S24BT) BTT  
WP N31°W 5.8' TO BASE  
  
ANGLE POINT FOUND (ORIGINAL WHIPPLE 1/4 CORNER, 1893)  
OSBF P/C, 1971  
1/4 CORNER S24 N00°02'03"E 23.47' (IN PLACE)  
WPCP S21 3/4°W 27.5' YMLP  
CORNER ON SOUTH EDGE OF SCHOLFELD RIDGE ROAD
- ③ WITNESS POINT FOUND (ORIGINAL WHIPPLE LINE TREE, 1893)  
OSBF P/C, 1960 (IN PLACE)  
26" DOUBLE STEMMED FIR S07°W 15.2' (NOW WINDFALL, FACE ROTTED)  
3' X 6" ROCK FACE S39°W 2.7' (X MISSING, IN PLACE)  
WPCP EAST 1.0' (IN PLACE)  
RIDGE SOUTH 21 LKS CRS EAST (IN PLACE)  
REWITNESSED  
7" SPRUCE N87 1/2°E 21.6' SCRIBED (WPS19BT) BTT  
37" FIR S46°W 17.1' SCRIBED (WPS24BT) BTT
- ④ 1/4 CORNER ESTABLISHED  
SET OSDF P/C 34" IG  
73" FIR N09°E 76.6' BARK SCRIBED (1/4S19BT) BTT  
75" HEMLOCK N28°E 49.2' SCRIBED (1/4S19BT) BTT  
45" FIR N38°E 67.7' SCRIBED (1/4S19BT) BTT  
65" FIR SOUTH 77.0' SCRIBED (1/4S19BT) BTT  
WPCP S79°E 1.5'
- ⑤ LINE TREE FOUND  
30" FIR (ORIG) (NOW 75" IN PLACE)  
60" FIR, 1960, S31 1/2°W 31.0' (NOW 74" FACE CLOSED, IN PLACE) BTT YMLP  
52" FIR, 1960, N66 1/2°E 39.4' (NOW 72" FACE CLOSED, IN PLACE) BTT
- ⑥ SECTION CORNER FOUND  
OSBF P/C, 1960, (IN PLACE)  
20" ALDER (ORIG) N40°W 22 LKS (NOW 24" N50°E 14.8' TO FACE)  
45" FIR, 1960, S73°W 15.3' (NOW 48" X 3" HIGH ROTTED STUMP, SCRIBES VISIBLE, IN PLACE)  
27" CEDAR, 1960, N56°W 47.3' (NOW 38", SCRIBES VISIBLE, IN PLACE)  
WPCP SOUTHEAST 1.5' (IN PLACE)  
REWITNESSED  
24" CEDAR S82°W 32.9' SCRIBED (T22SR12WS25BT) BTT  
WP S71°W 15.0' TO BASE, ALONGSIDE 45" FIR BT
- ⑦ LINE TREE RESTORED  
14" FIR (ORIG) (NOW MISSING)  
41" FIR, 1960, N88 1/2°E 56.8' (NOW 43" X 3" HIGH STUMP, FACE ROTTED AXE WORK VISIBLE, IN PLACE)  
36" FIR, 1960, S43°W 12.4' (NOW 36" X 6" HIGH STUMP, FACE CLOSED, IN PLACE)  
SET 5/8" X 36" IR 48" IG WITH YELLOW PLASTIC CAP MARKED LS1101  
11" FIR N76°E 38.8' SCRIBED (WPS19BT) BTT  
WP N54°W 24.3' TO BASE  
WPCP S69°W 5.0'  
CORNER FALLS IN WEST EDGE OF SCHOLFELD RIDGE ROAD CRS N27°W
- ⑧ CLOSING CORNER FOUND  
OSBF P/C, 1960 (IN PLACE)  
12" HEMLOCK (ORIG) N51°E 57 LKS (NOW 24" X 8" HIGH ROTTED STUMP, AXE WORK AND SCRIBES VISIBLE, IN PLACE)  
40" CEDAR (ORIG) S42°E 53 LKS (NOW 66" X 4" HIGH STUMP, FACE OPEN, SCRIBES VISIBLE, IN PLACE)  
30" CEDAR (ORIG) S42°W 26 LKS (NOW 48" X 4" HIGH STUMP, FACE ROTTED, IN PLACE)  
49" CEDAR, 1960, N83 1/2°W 26.3' (NOW 60" X 5" HIGH STUMP, SCRIBES VISIBLE, IN PLACE)  
REWITNESSED  
WP N54°E 36.1' TO BASE, ALONGSIDE 12" HEMLOCK BT  
WP S39°E 27.1' TO BASE, ALONGSIDE 40" CEDAR BT  
WP S44°W 14.5' TO BASE, ALONGSIDE 30" CEDAR BT  
WP N82°W 25.8' TO BASE, ALONGSIDE 49" CEDAR BT  
WPCP N06°E 1.6'



SECTION CORNER FOUND  
OSBF P/C, 1960 (IN PLACE)  
48" HEMLOCK STUMP S42°W 109.2' (IN PLACE)  
12" CEDAR S14 1/2°E 136.1' (NOW 23", FACE CLOSED, IN PLACE) BTT  
12" ALDER N74°E 64.9' (NOW 16", BARK SCRIBES VISIBLE, IN PLACE) BTT  
28" FIR N43°W 196.1' (NOW 27" X 3" HIGH STUMP, AXE WORK VISIBLE, FACE ROTTED, IN PLACE) BTT  
REWITNESSED  
11" FIR S69°W 42.6' SCRIBED (T22SR11WS19BT) BTT  
10" FIR N02°W 47.6' SCRIBED (T22SR11WS18BT) BTT  
WPCP S29°W 2.4'

1/16 CORNER FOUND  
OSBF P/C, 1961 (IN PLACE)  
49" FIR N06°E 44.4' (NOW 48" X 4" HIGH ROTTED STUMP, FACE CLOSED, IN PLACE) YMLP  
DOUBLE STEMMED MAPLE N27 1/2°W 29.7' (NOW MULTIPLE STEMMED MAPLE, FACE ROTTED, IN PLACE) BTT  
REWITNESSED  
WP N10°E 44.5' TO BASE, ALONGSIDE FIR BT  
WP N20°W 31.4' TO BASE, ALONGSIDE MAPLE BT  
WPCP S67°W 1.6'

1/4 CORNER FOUND  
OSBF P/C, 1961 (IN PLACE)  
24" CEDAR N82°E 63.9' (NOW 32" X 4" HIGH STUMP, IN PLACE) BTT  
REWITNESSED  
7" FIR N04°E 33.2' SCRIBED (1/4S20BT) BTT  
10" FIR N70°E 57.8' SCRIBED (1/4S20BT) BTT  
5" FIR S79°W 1.5' SCRIBED (1/4S19BT) BTT  
WP S29°W 5.7' TO BASE  
WPCP S29°W 5.7'  
1" WIDE CREEK NORTH 1.0' CRS SOUTHEAST

1/4 CORNER ESTABLISHED  
SET OSDF P/C 34" IG  
16" HEMLOCK S40°W 44.7' SCRIBED (NE1/16S19BT) BTT  
38" DOUBLE STEMMED MYRTLEWOOD N73°E 50.6' SCRIBED (NE1/16S19BT) BTT  
WPCP S76°E 3.2'

1/4 CORNER FOUND  
OSBF P/C, 1961 (IN PLACE)  
34" CEDAR N78°W 75.5' (NOW 45" X 4" HIGH STUMP, FACE SLOUGHED OFF, IN PLACE)  
48" CEDAR S58°W 71.4' (NOW 57" X 4" HIGH STUMP, SCRIBES VISIBLE, IN PLACE) BTT  
REWITNESSED  
34" CEDAR, 1961, RESCRIBED (1/4S19BT) BTT  
7" FIR S60°W 5.4' SCRIBED (1/4S30BT) BTT  
6" FIR N48°W 16.4' SCRIBED (1/4S19BT) BTT  
WPCP N24°E 2.0'

1/4 CORNER FOUND  
OSBF P/C, 1961 (IN PLACE)  
34" CEDAR N78°W 75.5' (NOW 45" X 4" HIGH STUMP, FACE SLOUGHED OFF, IN PLACE)  
48" CEDAR S58°W 71.4' (NOW 57" X 4" HIGH STUMP, SCRIBES VISIBLE, IN PLACE) BTT  
REWITNESSED  
34" CEDAR, 1961, RESCRIBED (1/4S19BT) BTT  
7" FIR S60°W 5.4' SCRIBED (1/4S30BT) BTT  
6" FIR N48°W 16.4' SCRIBED (1/4S19BT) BTT  
WPCP N24°E 2.0'

SURVEYED BY:  
REGISTERED PROFESSIONAL LAND SURVEYOR  
*Lloyd D. Smith*  
OREGON  
JULY 25, 1977  
LLOYD D. SMITH  
1101  
LLOYD D. SMITH  
300 5TH ST. BAY PARK  
COOS BAY, OREGON

SURVEY NARRATIVE TO COMPLY WITH PARAGRAPH 209.250 OREGON REVISED STATUTES

- ### LEGEND
- OSBF P/C = OREGON STATE BOARD OF FORESTRY 1 1/2" X 36" GALVANIZED IRON PIPE WITH 3" BRONZE CAP
  - OSDF P/C = OREGON STATE DEPARTMENT OF FORESTRY 1 1/2" X 36" ALUMINUM PIPE WITH 3 3/4" ALUMINUM CAP WITH MAGNETIC INSERT
  - = MONUMENT SET
  - = MONUMENT FOUND
  - WPCP = 4" X 4" X 72" WHITE PAINTED CEDAR POST
  - YMLP = YELLOW METAL LOCATION POSTER
  - BTT = BEARING TREE TAG
  - BT = BEARING TREE
  - CK = CREEK
  - IG = IN GROUND
  - IR = IRON ROD
  - ESTABLISHED = NEW CORNER SET
  - REESTABLISHED = LOST GLO OR CADASTRAL CORNER RESET BY PROPORTIONATE MEASUREMENT
  - Ⓢ = TRUE BLAZED AND POSTED
  - X = ORANGE CARSONITE MARKER AND STATION, CBM-250R LABELED BOUNDARY MARKER
  - WP = ORANGE CARSONITE MARKER, CBM-250R LABELED WITNESS POST
  - #1 ( ) = RECORD BEARING AND DISTANCE IN CHAINS (W. K. BYARS, 1879, CONTRACT NO. 315)
  - #2 ( ) = RECORD BEARING AND DISTANCE IN CHAINS (WILLIAMS R. WHIPPLE, 1893, CONTRACT NO. 612)
  - #3 ( ) = RECORD BEARING AND DISTANCE IN CHAINS (CHARLES A. SLANG, 1910, CONTRACT NO. 793)
  - #4 ( ) = RECORD BEARING AND DISTANCE IN FEET (ARNOLD G. GIBSON, 1961) DOUGLAS CO. M 21-25
  - #5 ( ) = RECORD BEARING AND DISTANCE IN FEET (ARNOLD G. GIBSON, 1971) DOUGLAS CO. M 44-33
  - #6 ( ) = RECORD BEARING AND DISTANCE IN FEET (RICHARD J. HINTZ, 1974) DOUGLAS CO. CS 58/6

### PURPOSE

TO SEPARATE STATE FOREST LANDS AND PRIVATE LANDS LOCATED IN SECTION 19, TOWNSHIP 22 SOUTH, RANGE 11 WEST, WILLAMETTE MERIDIAN

### PROCEDURE

IN 1961, ARNOLD GIBSON SUBDIVIDED SECTION 19, T.22S., R.11W., W.M. FOR THE OREGON BOARD OF FORESTRY. HE FOUND AND RESTORED ALL CORNERS AND LINE TREES GOVERNING THE SURVEY ON THE WEST BOUNDARY OF SECTION 19. AFTER FURTHER RESEARCH OF GIBSON'S SURVEY, I DETERMINED THAT HE DID NOT FOLLOW THE CORRECT PROCEDURES AS OUTLINED IN THE "MANUAL OF INSTRUCTIONS FOR THE SURVEY OF THE PUBLIC LANDS OF THE U. S.". IN PARTICULAR, THE USE OF LINE TREES AS MONUMENTS OF THE ORIGINAL SURVEY AND THEIR USE AS CONTROL POINTS IN THE ESTABLISHMENT OF THE 1/4 CORNER OF SECTION 19 (WEST SIDE). HE INCORRECTLY ESTABLISHED THE COORDINATE LOCATION FOR THE 1/4 CORNER BY CALCULATING THE MID-LATITUDE OF THE SECTION CORNER OF 18 B 19 AND THE CLOSING CORNER OF 19 B 30, INSTEAD OF PROPORTIONING FROM THE NEAREST MONUMENTS ON OPPOSITE SIDES. THEN THIS LATITUDE WAS HELD AND THE CORNER WAS PLACED ON LINE BETWEEN THE LINE TREES. THIS POINT WAS NEVER ESTABLISHED ON THE GROUND. HE THEN SUBDIVIDED S19 AND SET THE CN 1/16 CORNER WITHOUT SETTING THE CONTROLLING INTERIOR CORNERS. THE CN 1/16 CORNER AND ACCESSORIES WERE SUBSEQUENTLY DESTROYED BY A LAND DEBRIS AVALANCHE. THE REMAINING BEARING TREE, NOW A ROTTED STUB, WAS MOVED BY THE DEBRIS AVALANCHE AND IS FOUND TO BE UNACCEPTABLE TO USE FOR THE RESTORATION OF THE CORNER. SO I USED A RANDOM TRAVERSE TO CONNECT THE CONTROLLING CORNERS GOVERNING THE SUBDIVISION OF SECTION 19, TOWNSHIP 22 SOUTH, RANGE 11 WEST, WILLAMETTE MERIDIAN. THIS SECTION WAS SUBDIVIDED USING THE PROCEDURES AS OUTLINED IN THE "MANUAL OF INSTRUCTIONS FOR THE SURVEY OF THE PUBLIC LANDS OF THE U. S.". ALL ROADS ARE AT APPROXIMATE LOCATIONS UNLESS OTHERWISE INDICATED. NEW CORNERS AND ACCESSORIES MARKED ACCORDING TO "MANUAL OF INSTRUCTIONS FOR THE SURVEY OF THE PUBLIC LANDS OF THE U. S.". BEARINGS TO ACCESSORIES FOR ESTABLISHED CORNERS WERE TAKEN WITH A STAFF COMPASS SET AT 21° 30' EAST MAGNETIC DECLINATION. DISTANCE MEASURED TO ALUMINUM NAIL IN BT FACE. FOR DETAILED REPORT ON FOUND CORNERS SEE COUNTY RECORDS.

### BASIS OF BEARING

SOLAR OBSERVATION - HOUR ANGLE METHOD

CORRECTION SURVEY FOR:  
STATE OF OREGON - DEPARTMENT OF FORESTRY  
SECTION 19, T.22S., R.11W., W.M.  
DOUGLAS COUNTY, OREGON  
THEODOLITE AND E.D.M. SURVEY BY:  
D. SMITH, T. VAN VLEET, AND E. URSTADT  
DRAWN BY: E. URSTADT  
MAY 1, 1991  
SCALE: 1" = 400'

