

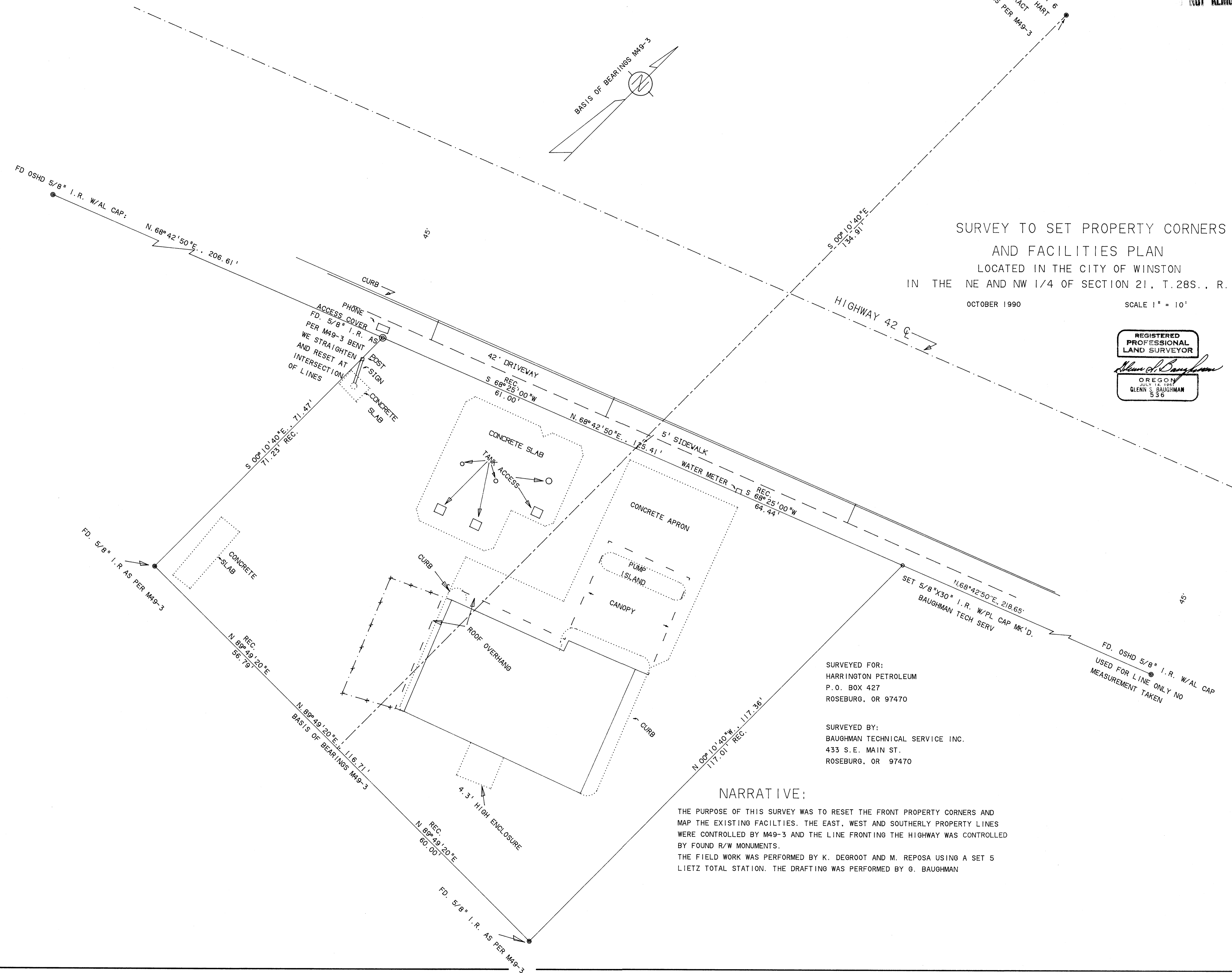
COUNTY SURVEYORS FILE DATA
DO NOT REMOVE FROM OFFICE

FILED *rl*
OCT 28 1990
COUNTY SURVEYOR
DOUGLAS COUNTY, OREGON

SURVEY TO SET PROPERTY CORNERS
AND FACILITIES PLAN
LOCATED IN THE CITY OF WINSTON
IN THE NE AND NW 1/4 OF SECTION 21, T.28S., R.6W., W.M.

OCTOBER 1990 SCALE 1" = 10'

REGISTERED
PROFESSIONAL
LAND SURVEYOR
Glenn S. Baughman
OREGON
JULY 14, 1985
GLENN S. BAUGHMAN
536



SURVEYED FOR:
HARRINGTON PETROLEUM
P.O. BOX 427
ROSEBURG, OR 97470

SURVEYED BY:
BAUGHMAN TECHNICAL SERVICE INC.
433 S.E. MAIN ST.
ROSEBURG, OR 97470

NARRATIVE:

THE PURPOSE OF THIS SURVEY WAS TO RESET THE FRONT PROPERTY CORNERS AND MAP THE EXISTING FACILITIES. THE EAST, WEST AND SOUTHERLY PROPERTY LINES WERE CONTROLLED BY M49-3 AND THE LINE FRONTING THE HIGHWAY WAS CONTROLLED BY FOUND R/W MONUMENTS. THE FIELD WORK WAS PERFORMED BY K. DEGROOT AND M. REPOSA USING A SET 5 LIETZ TOTAL STATION. THE DRAFTING WAS PERFORMED BY G. BAUGHMAN

COUNTY SURVEYORS FILE DATA
DO NOT REMOVE FROM OFFICE