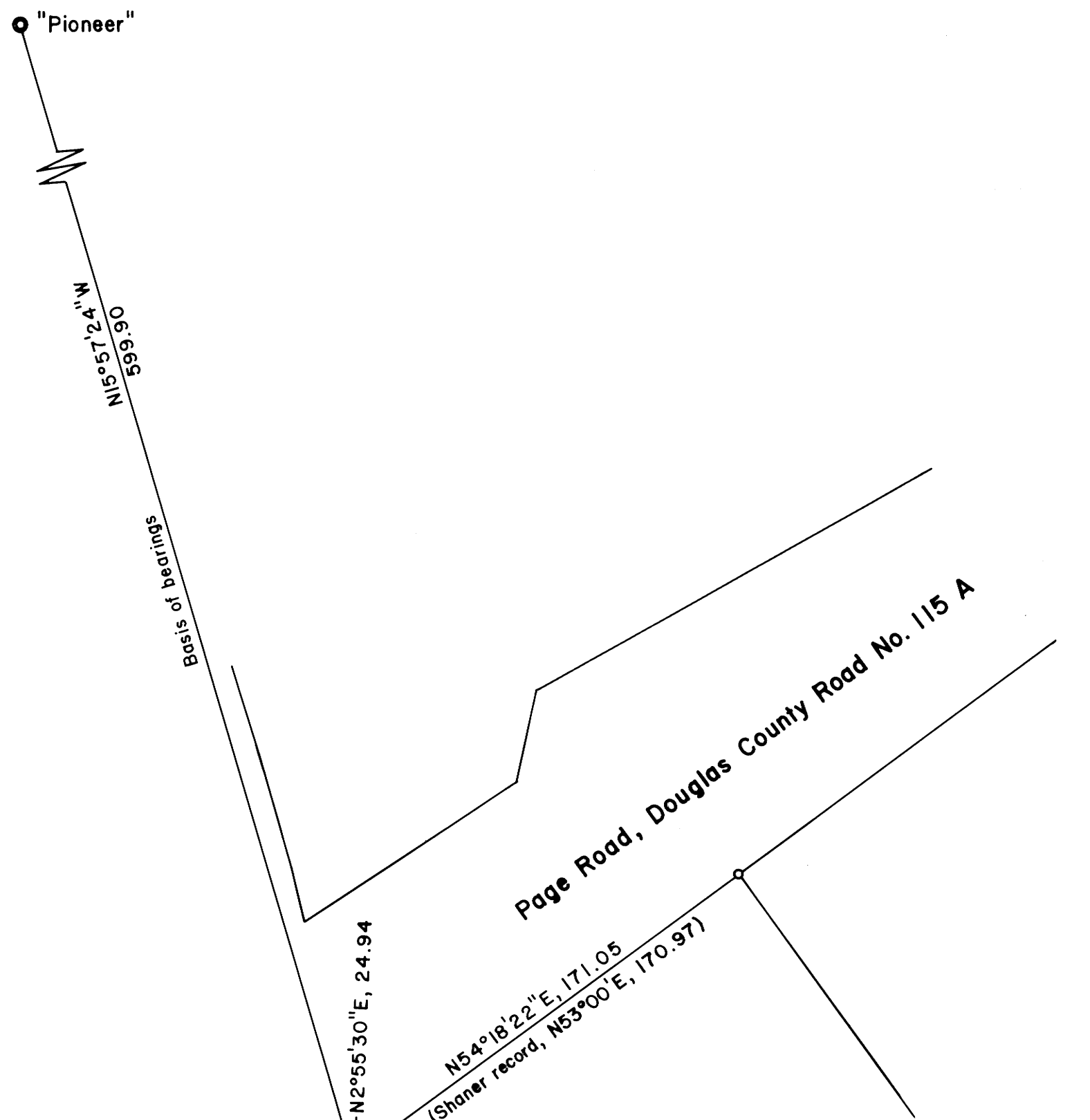


FILED
JUN 20 1990
COUNTY SURVEYORS
DOUGLAS COUNTY, OREGON

M112-1



Narrative:

The Winchester Home Sites Subdivision was surveyed by Arthur Boyer in 1946 (Vol. 6, Page 31). Shaner surveyed the north end of the subdivision in 1973 (Map File RM 2-45) and in 1979 (Map File RM 3-25). Shaner also surveyed the south end of the subdivision in 1972 (Map File RM 2-32). Bruce Rogers surveyed Lots 11 and 12 in 1982 (Map M93-24) and Lot 3 in 1988 (Map File M 106-71).

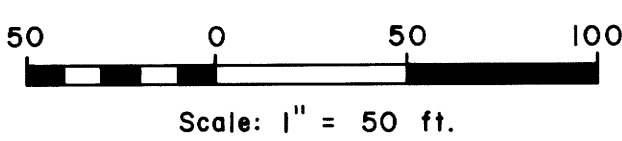
Rogers shows a 5.56 foot error by Boyer on the subdivision's west line, that is, the distance recorded by Boyer between the west corner of Lots 1 and 2 and the west corner of Lots 10 and 11 is 1,361.70 feet and Rogers measures it as 1,356.14 feet. Shaner measures it at 1,355.81 feet, basically agreeing with Rogers. No intervening corners were found. In Rogers survey of Lot 3, he proportioned the 5.56 foot shortage in Lots 2 and 3. Shaner agrees with this procedure and therefore accepts Rogers' west corner at Lots 3 and 4 as being substantially correct for latitude (i.e. N-S position). Shaner also proportions Lot 4's west boundary.

Because of the apparent quality of Boyer's original survey along the west line of the Winchester Home Sites Subdivision, and missing original monuments, the centerline of the Southern Pacific Railroad was held as controlling monumentation for the railroad and U. S. Highway 99 rights of way, by Shaner, on Lot 4.

The survey was performed to reestablish the boundaries of Lot 4. The survey field work was accomplished using a Jena 0°00'01" theodolite and a Mac II electronic distance meter.

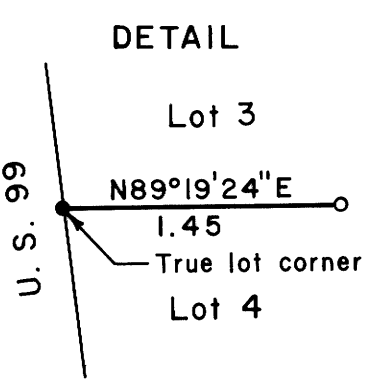
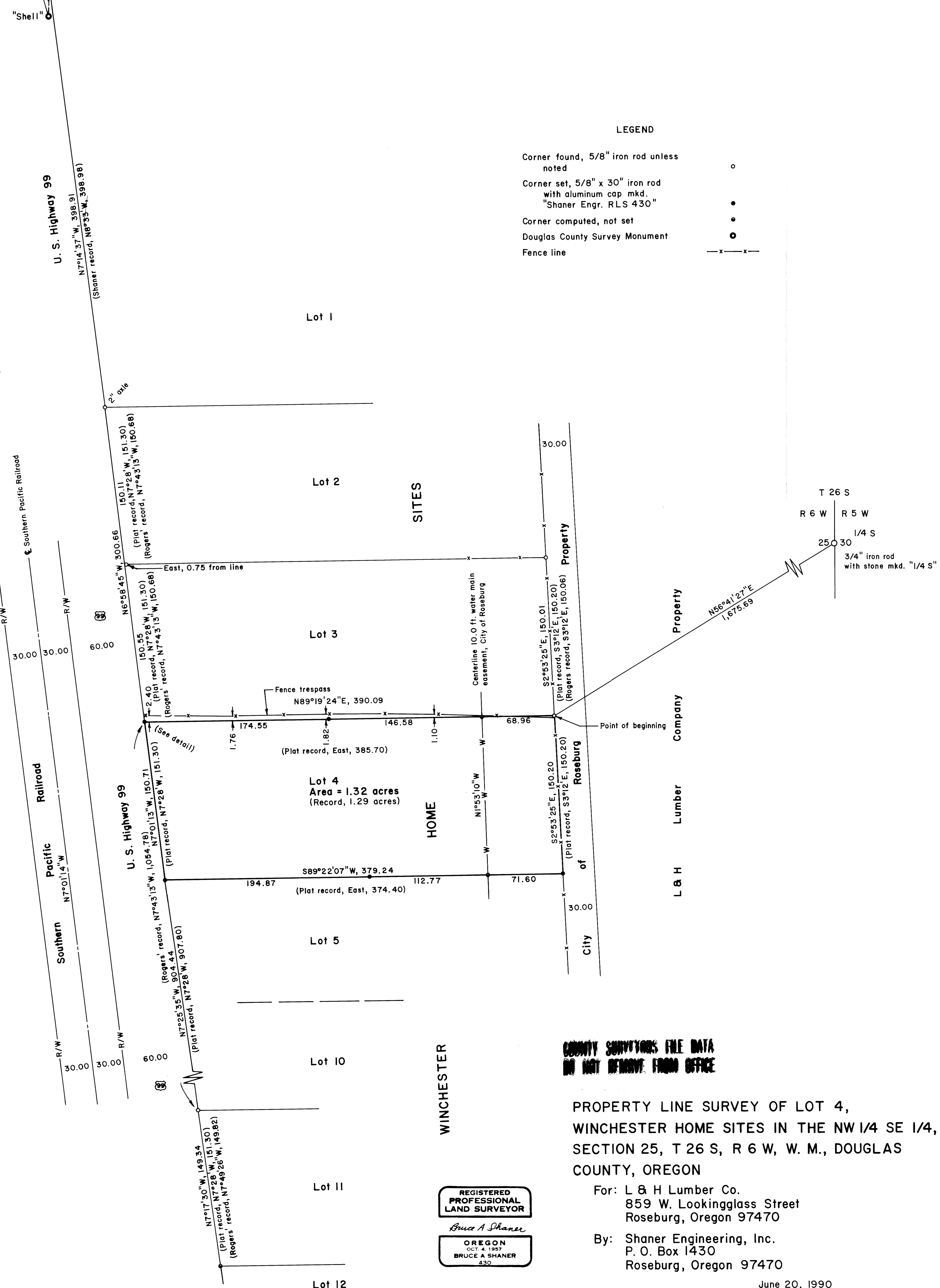


Basis of bearings is Douglas County Surveyor Monuments "Shell" & "Pioneer"



LEGEND

- Corner found, 5/8" iron rod unless noted o
- Corner set, 5/8" x 30" iron rod with aluminum cap mkd. "Shaner Engr. RLS 430" •
- Corner computed, not set •
- Douglas County Survey Monument o
- Fence line -x-x-



WINCHESTER
COUNTY SURVEYORS FILE DATA
DO NOT REMOVE FROM OFFICE

PROPERTY LINE SURVEY OF LOT 4,
WINCHESTER HOME SITES IN THE NW 1/4 SE 1/4,
SECTION 25, T 26 S, R 6 W, W. M., DOUGLAS
COUNTY, OREGON

For: L & H Lumber Co.
859 W. Lookingglass Street
Roseburg, Oregon 97470

By: Shaner Engineering, Inc.
P. O. Box 1430
Roseburg, Oregon 97470

REGISTERED
PROFESSIONAL
LAND SURVEYOR
Bruce A Shaner
OREGON
OCT 4 1957
BRUCE A SHANER
430

June 20, 1990