

N.W. CORNER SECTION 30

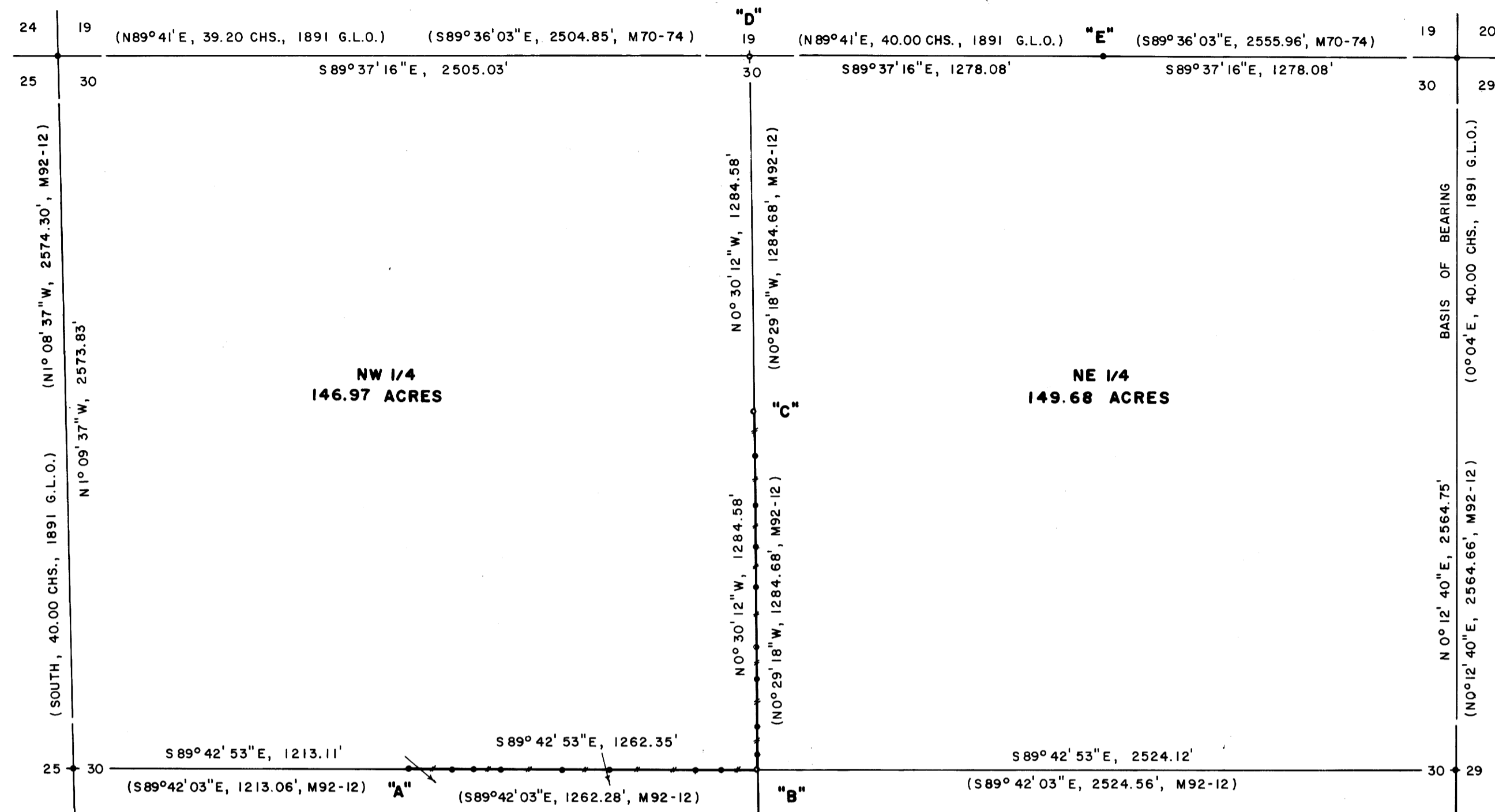
FD. 5/8" IRON PIN SET IN SURVEY M62-1
16" CEDAR SNAG, N59°W, 58.0' (NO MARKS), 1976 B.T.
18" HEMLOCK STUMP, S05°E, 23.0' (NO MARKS), 1976 B.T.
24" HEMLOCK STUMP, S81°E, 23.9' (NO MARKS), 1976 B.T.
32" CEDAR STUMP, N70°E, 36.5' (NO MARKS), 1976 B.T.

EAST 1/16 CORNER SECTIONS 19 AND 30

FD. 1 1/4" IRON PIPE/BRASS CAP AS SET IN SURVEY M70-74
(CORNER FALLS 0.20' NORTH AND 0.43' WEST OF MY TRUE POSITION)
30" CEDAR STUMP, S20°W, 30.3' (NO MARKS), 1979 B.T.
42" FIR STUMP, N74°E, 27.8' (NO MARKS), 1979 B.T.

N.E. CORNER SECTION 30

FD. 1 1/4" IRON PIPE SET IN RENEWAL NO. 10
14" CEDAR STUB, NORTH, 4.0' (SCRIBE VIS.), 1975 B.T.
22" HEMLOCK, S15°W, 26.0' (SCRIBE VIS.), 1975 B.T.
34" HEMLOCK, S81°W, 30.3' (SCRIBE VIS.), 1975 B.T.
46" DOWNED HEMLOCK, N22°W, 31.3' (SCRIBE VIS.), 1975 B.T.



**SURVEY FOR
INTERNATIONAL PAPER COMPANY
SECTION 30, T21S, R11W, W.M.
DOUGLAS COUNTY, OREGON**

**BY
ROBERTS SURVEYING INC.
29 WEST 29TH STREET
EUGENE, OREGON 97405**

**NOVEMBER 27, 1990
SCALE 1" = 400'**

LEGEND

- MONUMENTS FOUND AND USED FOR CONTROL
- MONUMENTS SET, 3/4" FINNED ALUMINUM RODS WITH 3/4" ALUMINUM CAPS. CAPS STAMPED S-T-R, DATE & P.L.S. 1039.
- LINES MARKED AND BLAZED THIS SURVEY.
- () DATA OF RECORD
- (M.M.) INDICATES LOCATION OF BURIED MAGNETIC MARKERS. MARKERS ARE FLUORESCENT ORANGE IN COLOR AND ARE BURIED, 12" TO 18" DEEP, ALONG LINE AS SHOWN.
- DISTANCES TO B.T.'S ARE CENTER MEASURE
- ALL NEW B.T.'S ARE SCRIBED AND HAVE A METAL WASHER STAMPED "P.L.S. 1039" NAILED TO LOWER BLAZE. SCRIBED BLAZES ARE PAINTED RED.
- ALL NEW B.T.'S HAVE A 6" SPIKE DRIVEN INTO THE CENTER OF THE SURVEY TO SERVE AS A CHAINING POINT FOR MEASURED DISTANCES.

WEST 1/4 CORNER SECTION 30

FD. 5/8" IRON PIN SET IN SURVEY M62-1
16" SPRUCE STUMP, S10°E, 31.1' (NO MARKS), 1976 B.T.
65" FIR STUMP, N45°W, 4.5' (BARK SCRIBE), 1976 B.T.

EAST 1/4 CORNER SECTION 30

FD. 1 1/4" IRON PIPE/BRASS CAP AS SET IN SURVEY M92-12. CAP STAMPED "P.L.S. 497" AND DATED 1978.
60" FIR STUMP, N70°E, 34.0' (SCRIBE VIS.), 1982 B.T.
24" MAPLE, S07°E, 68.5' (SCRIBE VIS.), 1982 B.T.

"A" C.W. 1/16 CORNER SECTION 30

FD. 1 1/4" IRON PIPE/BRASS CAP AS SET IN SURVEY M92-12.
CAP STAMPED "P.L.S. 497" AND DATED 1978.
24" MAPLE, N69°E, 92.0' (SCRIBE VIS.), 1982 B.T.
26" SPRUCE, N04°E, 65.0' (SCRIBE VIS.), 1982 B.T.

"B" CENTER 1/4 CORNER SECTION 30

SET 3/4" x 36" ALUM. ROD WITH 3/4" ALUM. CAP
(BURIED PURPLE M.M. UNDER 36" ALUM. ROD)
7" ALDER, N06°E, 11.6' (BARK SCRIBED/PAINTED RED)
8" ALDER, N81°W, 10.9' (BARK SCRIBED/PAINTED RED)

"C" C.N. 1/16 CORNER SECTION 30

SET 3/4" x 24" ALUM. ROD WITH 3/4" ALUM. CAP
(BURIED PURPLE M.M. UNDER 24" ALUM. ROD)
14" SPRUCE, S07°W, 93.2' (SCRIBED/PAINTED RED)
40" MAPLE, N65°E, 13.0' (SCRIBED/PAINTED RED)

"D" NORTH 1/4 CORNER SECTION 30

SET 3/4" x 36" ALUM. ROD WITH 3/4" ALUM. CAP.
(BURIED PURPLE M.M. UNDER 36" ALUM. ROD)
27" FIR STUMP, S31°E, 32.4' (R.R. SPIKE/PAINTED RED)
35" HEMLOCK STUMP, N85°W, 5.3' (R.R. SPIKE/PAINTED RED)
(DISTANCES ARE TO R.R. SPIKES DRIVEN INTO FACE OF STUMPS)

"F" SOUTH 1/4 CORNER SECTION 30

FD. IRON PIPE/BRASS CAP AS SET IN SURVEY M92-12.
11" ALDER, S62°E, 122.4' (BARK SCRIBE), 1982 B.T.
24" SPRUCE, S10°E, 75.2' (SCRIBE VIS.), 1982 B.T.

NARRATIVE, THE PURPOSE OF THIS SURVEY IS TO POST AND BLAZE THE S 1/2 OF THE N 1/2 OF THE N-S 1/4 AND TO POST AND BLAZE THE E 1/2 OF THE W 1/2 OF THE E-W 1/4 OF SECTION 30. ALSO THE CLIENT WANTED THE CENTER 1/4 CORNER, THE C.N. 1/16 CORNER AND THE NORTH 1/4 CORNER SET IN THE FIELD. THE EAST 1/4 CORNER, THE SOUTH 1/4 CORNER, THE WEST 1/4 CORNER, THE N.W. SECTION CORNER AND THE N.E. SECTION CORNER WERE FOUND IN THE FIELD AS SHOWN. A SERIES OF CLOSED RANDOM CONTROL TRAVERSES, USING A WILD T-16 THEODOLITE AND A DI-4L E.D.M., WERE RUN BETWEEN THE ABOVE FOUND CORNERS AND USED FOR CONTROL. INVERSES WERE COMPUTED BETWEEN THE ABOVE TIED CONTROLLING CORNERS AND SECTION 30 WAS SUBDIVIDED IN ACCORDANCE TO THE 1973 MANUAL OF INSTRUCTION FOR THE SURVEY OF THE PUBLIC LANDS OF THE UNITED STATES. A CLOSED RANDOM PROPERTY LINE TRAVERSE, USING A WILD T-16 THEODOLITE AND A DI-4L E.D.M., WAS RUN ALONG THE PROPERTY LINES TO BE BLAZED AND POSTED. OFFSETS WERE COMPUTED FROM THIS RANDOM PROPERTY LINE TRAVERSE TO THE TRUE PROPERTY LINE. PROPERTY LINES WERE MARKED WITH RED PAINTED BLAZES, YELLOW INTERNATIONAL PAPER COMPANY BOUNDARY LINE DECALS ATTACHED TO 72" ALUMINUM POSTS AND BURIED FLUORESCENT ORANGE MAGNETIC MARKERS. ALUMINUM POSTS AND BURIED MAGNETIC MARKERS ARE REFERENCED BY A 4" x 6" YELLOW ALUMINUM BOUNDARY LINE TAG NAILED TO A NEARBY TREE. TAG NOTES BEARING AND DISTANCE FROM TREE TO ALUMINUM POST OR BURIED MAGNETIC MARKER. CORNER "A", THE C.W. 1/16 CORNER, AS SET IN SURVEY M92-12 FALLS 0.22' SOUTH AND 0.24' EAST OF MY COMPUTED POSITION FOR SAID 1/16 CORNER. I DID NOT SET A NEW C.W. 1/16 CORNER IN THIS SURVEY. CORNER "B", THE CENTER 1/4 CORNER, WAS SET AT THE POINT OF INTERSECTION OF THE N-S AND E-W CENTERLINES OF SAID SECTION 30. CORNER "C", THE C.N. 1/16 CORNER, WAS SET HALFWAY BETWEEN THE CENTER 1/4 CORNER AND THE NORTH 1/4 CORNER AS SHOWN. CORNER "D", THE NORTH 1/4 CORNER, WAS SET BY SINGLE PROPORTIONATE MEASURE BETWEEN THE N.W. AND N.E. SECTION CORNERS AS SHOWN. CORNER "E", THE EAST 1/16 CORNER BETWEEN SECTIONS 19 AND 30, AS SET IN SURVEY M70-74 FALLS 0.20' NORTH AND 0.43' WEST OF MY COMPUTED POSITION FOR SAID 1/16 CORNER. I DID NOT SET A NEW EAST 1/16 CORNER IN THIS SURVEY.

LOCATION OF BURIED MAGNETIC MARKERS			
C.N. 1/16	0'	SOUTH	(M.M. & AL. POST)
N-S 1/4 30-3	155'	SOUTH	(M.M. & AL. POST)
N-S 1/4 30-4	333'	SOUTH	(M.M. & AL. POST)
N-S 1/4 30-5	483'	SOUTH	(M.M.)
N-S 1/4 30-6	628'	SOUTH	(M.M. & AL. POST)
N-S 1/4 30-7	843'	SOUTH	(M.M. & AL. POST)
N-S 1/4 30-8	958'	SOUTH	(M.M. & AL. POST)
N-S 1/4 30-9	1133'	SOUTH	(M.M. & AL. POST)
N-S 1/4 30-10	1232'	SOUTH	(M.M.)
C. 1/4 COR.	1285'	SOUTH	(M.M. & AL. POST)
E-W 1/4 30-1	130'	WEST	(M.M. & AL. POST)
E-W 1/4 30-2	227'	WEST	(M.M. & AL. POST)
E-W 1/4 30-3	535'	WEST	(M.M. & AL. POST)
E-W 1/4 30-4	701'	WEST	(M.M. & AL. POST)
E-W 1/4 30-5	924'	WEST	(M.M. & AL. POST)
E-W 1/4 30-6	1026'	WEST	(M.M.)
E-W 1/4 30-7	1097'	WEST	(M.M. & AL. POST)
C.W. 1/16	1262'	WEST	(AL. POST)

REGISTERED
PROFESSIONAL
LAND SURVEYOR

Lee Roberts
OREGON
REGISTERED
L. D. ROBERTS
1990

63/126
M111-9

63/126
M111-9