

FILED  
APR 16 1991

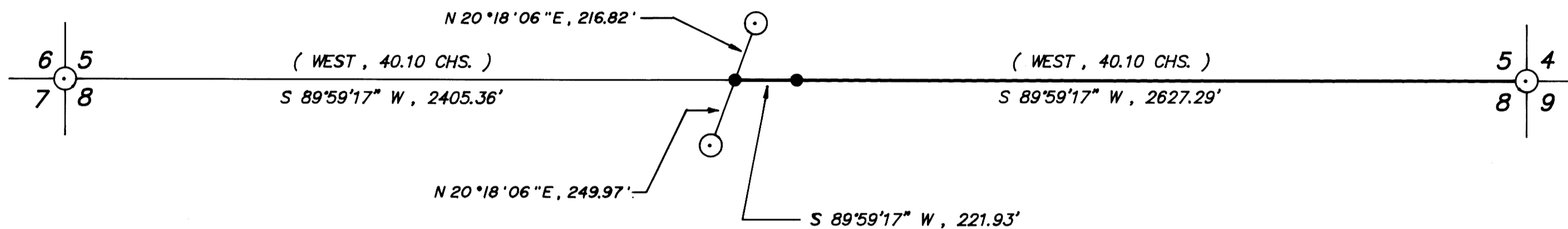
**SECTION CORNER 5,6,7,8**

FOUND : 1-1/4" IRON PIPE WITH DOUGLAS COUNTY BRASS CAP DATED 1962  
36" ROTTEN FIR STUMP, N 88 W, 21.6' - NO MARKS, WEYCO TAG  
32" ROTTEN FIR STUMP, N 15 E, 35.8' - NO MARKS, 2 B.L.M. TAGS  
48" FIR STUMP, S 80-1/2 E, 20.6' - NO MARKS, WEYCO TAG  
21" FIR, S 20 E, 34.7' - CLOSED FACE  
23" WHITE FIR, S 9 W, 80.6' - CLOSED FACE

**SECTION CORNER 4,5,8,9**

FOUND : 2-1/2" IRON PIPE WITH B.L.M. BRASS CAP DATED 1963  
27" WHITE FIR, N 34-3/4 E, 60.2' - CLOSED FACE, WEYCO AND B.L.M. TAGS  
31" WHITE FIR, S 50-1/2 E, 21.3' - CLOSED FACE, WEYCO AND B.L.M. TAGS  
23" WHITE FIR, S 60-1/4 W, 55.9' - CLOSED FACE, B.L.M. TAG  
( RECORD S 68-1/4 W, 64 LKS. )  
63" FIR, S 79-1/4 W, 36.1' - VISIBLE BARK SCRIBE, WEYCO AND B.L.M. TAGS  
( LIVE TREE, NOT A SNAG AS PER RECORD )  
38" FIR, N 47-1/4 W, 42.1' - CLOSED FACE, WEYCO TAG  
NOTE : 3/4" IRON PIPE 0.8 FT. NORTHWESTERLY

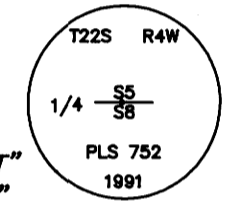
STATE HIGHWAY R/W MONUMENT - 430+32.54 P.O.T. AHD.  
FOUND : 3/4" IRON ROD IN FENCE LINE



STATE HIGHWAY R/W MONUMENT - 435+00  
FOUND : 3/4" IRON ROD IN FENCE LINE

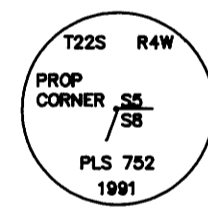
**1/4 CORNER 5 & 8**

SET : 2" X 41" IRON PIPE WITH BRASS CAP  
17" FIR, N 4 W, 14.7' - SCRIBED "1/4S5 BT"  
13" WHITE FIR, S 73 W, 15.7' - SCRIBED "1/4S8 BT"  
15" WHITE FIR, N 83-1/2 E, 18.3' - SCRIBED "1/4S5 BT"  
17" WHITE FIR, S 2-1/2 W, 26.3' - SCRIBED "1/4S8 BT"



**PROPERTY CORNER**

SET : 2" X 41" IRON PIPE WITH BRASS CAP  
22" FIR, S 5 W, 15.3' - SCRIBED "PC BT"  
11" FIR, N 81 W, 21.1' - SCRIBED "PC BT"



BASIS OF BEARING : SOLAR OBSERVATION

SCALE : 1" = 400'

- CORNERS FOUND
- CORNERS SET THIS SURVEY
- PROPERTY LINE BLAZED
- ( ) RECORD DATA G.L.O. 1855

**- NARRATIVE -**

THIS SURVEY WAS MADE IN FEBRUARY, 1991 BY DONALD L. PEEL OF PEEL BAKER LAND SURVEYING, INC. 1385 OAK STREET - SUITE 3, EUGENE OREGON. THE PURPOSE OF THIS SURVEY WAS TO LOCATE AND MARK THAT PART OF THE NORTH LINE OF SECTION 8, T22S, R4W, W.M. THAT IS OWNED BY WEYERHAEUSER COMPANY. A WILD T1000 THEOMAT AND DISS E.D.M. WERE USED TO PERFORM THIS SURVEY. THE BEARINGS WERE BASED ON A SOLAR OBSERVATION. A CLOSED RANDOM TRAVERSE WAS RUN BETWEEN THE NORTHWEST AND NORTHEAST SECTION CORNERS OF SECTION 8 FOR CONTROL. OFFSETS FROM THE RANDOM TRAVERSE LINE TO THE TRUE PROPERTY LINE WERE CALCULATED AND USED TO DETERMINE THE POSITION OF THE TRUE PROPERTY LINE. THE TRUE PROPERTY LINE WAS MARKED IN THE FIELD BY BLAZING TREES (BLAZES NOTCHED AND PAINTED RED) ON BOTH SIDES OF THE TRUE LINE. THE 1/4 CORNER BETWEEN SECTIONS 5 AND 8 WAS SEARCHED FOR BUT NOT FOUND. SAID 1/4 CORNER WAS SET AT MIDPOINT BETWEEN THE NORTHWEST AND NORTHEAST SECTION CORNERS. THE PROPERTY CORNER IN THE WEST 1/2 OF THE NORTH LINE OF SECTION 8 WAS SET AT THE POINT OF INTERSECTION OF THE SECTION LINE AND THE EASTERLY RIGHT-OF-WAY LINE OF STATE HIGHWAY 1-5. BOTH CORNERS SET IN THIS SURVEY WERE MONUMENTED AS SHOWN ON THIS PLAT. FOR ALL BEARING TREES MARKED IN THIS SURVEY, THE DISTANCE WAS MEASURED FROM THE CORNER TO A "W" NAIL IN THE LOWER BLAZE AND THE BEARINGS WERE MAGNETIC, VARIATION 20'.

REGISTERED PROFESSIONAL LAND SURVEYOR  
*Donald L. Peel*  
OREGON JULY 8, 1968  
DONALD L. PEEL  
752

SURVEY IN  
N1/2 SECTION 8, T22S, R4W, W.M.  
DOUGLAS COUNTY, OREGON

FOR  
WEYERHAEUSER COMPANY  
BY  
PEEL BAKER LAND SURVEYING, INC.  
1385 OAK ST. - SUITE 3, EUGENE, OREGON 97401  
FEBRUARY 25, 1991

COUNTY SURVEYORS FILE DATA  
DO NOT REMOVE FROM OFFICE

MAP FILE M.L.L. - 75.

MAP FILE M.L.L. - 75