

LONE ROCK TIMBER CO.

P.O. BOX 1127 ROSEBURG, OREGON 97470

SECTION 6, TOWNSHIP 23 SOUTH, RANGE 6 WEST, W.M.

DOUGLAS COUNTY, OREGON

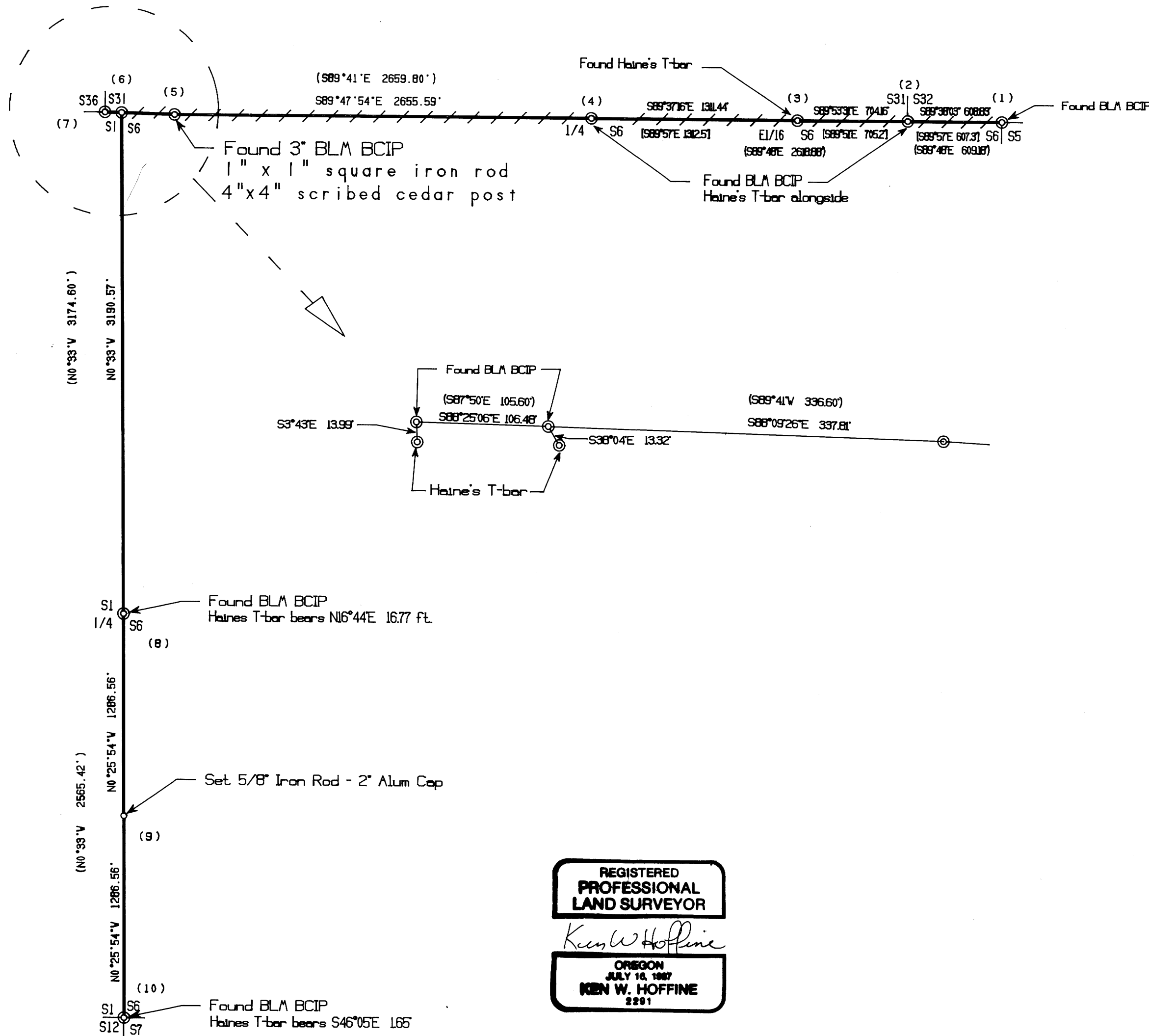
SQUAW-BRUSH SURVEY, J23-6-6 TRACT

Drawn by: Ken Hoffine-Bill Warren

SCALE: 1" = 600 ft.

DATE: MARCH 1991

C.S. FILE 63/106
Map File M11-72



NARRATIVE:

- 1) The basis of bearing is by BLM 1957 Record Survey
- 2) The purpose of this survey was to establish and mark boundaries as shown hereon.
- 3) The instruments used in this survey were a Lietz Set 2 Total Station Theodolite, an IBM compatible AT w/Generic Cadd and Traverse PC software.
- 4) Assisting personnel were Gary Angiolet.
- 5) Deed record pertaining to this survey is #89-18044 filed with the Douglas County Clerk.
- 7) Written notes including corner notes and background information are filed in Douglas County Survey Records Book _____, Page_____.

LEGEND:

- ⊙ - Found Monument size and type noted.
- - Set 5/8" x 36" I. Rod w/ 2" Aluminum cap, set approx. 0.4 ft. above ground.
- - Lines marked, blazed, painted & tagged.
- - Projected lines.
- () - BLM Measurements, chains converted to feet.
- [] - Wiford Haines PLS#239, Record Survey CS42/13 Douglas County Surveyors Office.

REGISTERED
PROFESSIONAL
LAND SURVEYOR

Ken W. Hoffine

OREGON
JULY 10, 1987
KEN W. HOFFINE
2201

C.S. FILE 63/106
Map File M11-72

M 111-72

FILED

APR 10 1991

LONE ROCK TIMBER CO.
P.O. BOX 1127
ROSEBURG, OREGON 97470

COUNTY SURVEYOR
DOUGLAS COUNTY, ORE. *pk*

SQUAW-BRUSH SURVEY
SECTION 6, T23S, R6W, W.M.
DOUGLAS COUNTY OREGON

SURVEY DATE:
March 1991

GENERAL INFORMATION:

This survey was conducted to establish property corners and property lines for timber cutting purposes. Equipment used was a Lietz Set 2 Total Station and IBM compatible AT computer using Traverse PC and Generic Cadd software. The survey was initiated at the NW corner of Section 6. An Open Traverse to establish property lines for marking was run East to the NE Section corner of Section 6 and South to the West $\frac{1}{4}$ of Section 6. A Closed Traverse was run from the West $\frac{1}{4}$ to the SW section corner of Section 6 to establish by proper and legal survey methods the S1/16 between Sections 6 and 1. Bearings are based on the West line between the NW section corner and W $\frac{1}{4}$ corner of Section 6 of BLM Record Survey 1957. See accompanying survey map filed with Douglas County Surveyors Office, Roseburg, OR.
Map # M 111-72

CORNER INFORMATION:

The following is a record of all corners found or set during the course of the survey:

(1) NE corner Section 6

Found: 1955 BLM 2 $\frac{1}{2}$ " brass cap on 2" iron pipe 1.4 feet above ground in loose rock, (corner moves slightly) and the following accessories:

- 54" DF (original) stump bears S25°E, 7.0 feet to middle of stump with burned out face and two BLM tags.
- 20" decayed Hemlock stabe 6 feet tall with scribes bears S29°E, 53.8 feet (Record 31.0 ft).
- 20" Hemlock bears N27°E, 18.4 feet with a County Tag.
- No Trace of other B.T.'s.

Corner lies on a steep North slope approximately 1 chain South of creek with a large beaver pond to the Northwest.

(2) SE corner Section 31

Found: 1955 2 $\frac{1}{2}$ " BLM brass cap 1 foot above ground with Haine's T-bar alongside and the following accessories:

- 12" WF bears N6°W, 47.6 feet, well healed scar with a County and BLM Tag.
- 6" DF bears N60°E, 24.4 feet. I tag tree.
- No trace of other B.T.'s.

Corner lies on an extremely steep North slope approximately 25.5 chains South of Squaw Creek with pile of rocks around corner.

APR 10 1991

COUNTY SURVEYOR
DOUGLAS COUNTY, ORE. *JP*(3) E1/16 Section 6 Only

Found: Haine's T-bar 0.3 feet above ground and the following accessories:

- 41" DF bears N71°E, 5.9 feet, bark scribed with Haine's brass washer. I tag tree.
- 30" DF bears S37°E, 17.2 feet, bark scribed and I tag tree.

(4) N $\frac{1}{4}$ Section 6

Found: 1955 2 $\frac{1}{2}$ " BLM brass cap 0.5 feet above ground with Haine's T-bars alongside and the following accessories:

- 12" Chinkapin bears S34°W, 32.0 feet, well healed and I tag tree.
- 55" DF (original) stump bears S39°W, 49.3 feet with bark scribe visible and Haine's brass washer.
- 19" DF bears S13°E, 20.7 feet, well healed scar and I tag tree.
- 40" DF bears S42°E (record S52°E), 18.8 feet, with bark scribe.

Corner lies on steep North slope approximately 3 chains West of North flowing creek and 15 chains East of Squaw Creek.

(5) Angle Point Section 31

Found: 1955 BLM 3" brass cap with a 1" by 1" square iron rod alongside and a 4" by 4" cedar post with scribing visible and the following accessories:

- 9" Dogwood bears S58°E, 25.2 feet, with bark scribing visible and I tag tree.
- 44" (original) DF bears S56°E, 40.0 feet, well healed scar and two tags on tree.
- 12" Chinkapin dead and broken down bears N81°W, 79.2 feet with BLM tag.

Corner lies on 40% South slope approximately 5.1 chains East of NE section corner of Section 6.

(6) NW Corner of Section 6

Found: 1956 BLM 2 $\frac{1}{2}$ " brass cap approximately 1 foot above ground with a Haine's T-bar which bears S38°0.4'E, 13.32 feet and the following accessories:

- 29" DF bears S25°W, 63.8 feet, well healed scar with a BLM tag.
- 32" DF bears S65°W, 61.1 feet, well healed scar and Haine's brass washer on tree. I tag tree.
- 50" DF bears N86°E, 54.5 feet, well healed scar and Haine's brass washer on tree. I tag tree.

Corner lies on a 40% West slope approximately 105 feet East of the SW corner Section 31 and 205 feet East of Brush Creek Road.

63/106-6B

FILED

APR 10 1991

(7) SW Corner of Section 31

COUNTY SURVEYOR
DOUGLAS COUNTY, ORE. *PH*

Found: 1956 BLM 2½" brass cap approximately 1 foot above ground with a Haine's T-bar which bears S3°43'E, 13.99 feet and the following accessories:

- 38" DF stump bears N16°W, 23.5 feet. This is a high stump covered with Alum covering, scribe visible, old tags on ground. I tag stump.
- 42" DF bears N39°W, 49.5 feet, well healed scar and BLM tag.
- 18" DF bears N38½°E, 60.0 feet, well healed scar and I tag tree.

Corner lies approximately 100 feet East of Brush Creek Road on a 40% West slope.

(8) West ¼ Section 6

Found: 1957 BLM 2½" brass cap approximately 0.6 feet above ground with a Haine's T-bar which bears N16°44'E, 16.77 feet and the following accessories:

- 31" DF stump bears S37°E, 63.5 feet. This is a high stump with Alum covering and 3 BLM tags.
- 14" DF bears N38°W, 15.85 feet. I tag tree.
- 12" DF bears S79°E, 14.10 feet. I tag tree.
- 50" DF bears N85°W, 142.8 feet, Haine's washer and well healed scar. I tag this tree which is on top of ridge.
- 15" Chinkapin bears N75°W, 133.0 feet. No visible marks, nearly dead tree.

Corner lies on a very steep Southeast slope approximately 1.5 chains South from top of flat spur ridge.

(9) S 1/16 between Sections 6 and 1

Set: 5/8" by 36" iron rod with aluminum cap 0.5 feet above ground with a five foot metal fence post bearing 1 foot North. Haine's originally set this corner which was destroyed by road construction which I reestablish with a 2" x 2" cedar post from which a 16" DF bears N69°E, 18.3 feet (I bore and find scribes) and a 15" DF stump heavily decayed and covered by road construction bears S57½°W, 28.6 feet. This reestablished point bears N14°57'E, 23.47 feet from my aluminum cap and the following accessories bear from my corner:

- 30" DF bears S60°E, 13.30 feet. I scribe tree S 1/16 S6 T23S R6W BT and tag tree.
- 14" DF bears S36°W, 35.0 feet. I scribe tree S 1/16 S1 T23S R7W BT and tag tree.
- 4 foot tall iron fence post with tag on edge of road bears North 44.1 feet.

Corner lies on a steep SE slope 30 feet from the sharp corner of BLM Road #23-6-7.4 around a rock spur ridge.

(10) SW section corner Section 6

Found: 1957 BLM 2½" brass cap approximately 0.6 feet above ground with a Haine's T-bar which bears S46°05'E, 1.65 feet and the following accessories:

CS File No 63/106-6c

- 77" (original) DF bears S75°E, 25.2 feet to face of visible bark scribe - 28.0 feet to midbase, with old BLM tag and I tag tree.
- 8" (original) DF dead pitchy 5 foot tall shag bears S60°W, 18.35 feet, burned face with visible scribe and 3 BLM tags.
- 17" DF 6 foot tall snag bears S60°W, 23.0 feet, visible scribe and BLM tag.
- 31" WRC bears S3°E, 35.5 feet, well healed and BLM tag.
- 30" WF bears N36°E, 50.1 feet, well healed and I tag tree.
- 24" DF blowdown with heavy decay bears approximately N60°W, 43.0 feet to hole, visible scribe.
- 10" DF bears N64°W, 18.4 feet, I tag tree.
- 7" DF bears S5°W, 2.85 feet, I tag tree.

REGISTERED
PROFESSIONAL
LAND SURVEYOR

Ken W Hoffine

OREGON
JULY 16, 1987
KEN W. HOFFINE
2291

Respectfully submitted,

Ken W Hoffine

Ken W. Hoffine, PLS #2291

FILED

7/1

APR 10 1991

COUNTY SURVEYOR
DOUGLAS COUNTY, ORE. *JP*