

SECTION CORNER 20, 21, 28, 29

FOUND : 2-1/2" IRON PIPE WITH B.L.M. BRASS CAP DATED 1963
23" FIR , N 26 E , 88.3' - CLOSED FACE
15" FIR , S 80 E , 7.1' - CLOSED FACE
9" FIR SNAG , S 27-1/2 W , 18.6' - CLOSED FACE
27" FIR , N 54 W , 30.9' - CLOSED FACE

PROPERTY CORNER ON SECTION LINE

SET : 2" X 43" IRON PIPE WITH BRASS CAP
21" FIR , N 14 E , 16.8' - SCRIBED "PC BT"
21" FIR , N 86 E , 19.3' - SCRIBED "PC BT"

POINT ON PROPERTY LINE IN SEC. 21

SET : 2" X 42" IRON PIPE WITH BRASS CAP
21" CEDAR , S 44 E , 28.5' (SCRIBED "PL BT")
22" FIR , S 15 W , 27.3' (SCRIBED "PL BT")

SECTION CORNER 21, 22, 27, 28

FOUND : WILFORD HAINES "T" IRON
69" FIR , N 30-1/4 W , 53.9'
SOME VISIBLE BARK SCRIBING
(RECORD - N 31 W , 62.7')
36" FIR , N 88-1/4 E , 97.6'
SOME VISIBLE BARK SCRIBING
(RECORD - S 88 E , 105.8')

NORTH 1/16 CORNER 28 & 29

SET : 2" X 43" IRON PIPE WITH BRASS CAP
9" FIR , S 63 E , 23.2' (SCRIBED "N1/16S28 BT")
20" FIR , S 39 W , 6.2' (SCRIBED "N1/16S29 BT")

NORTHWEST 1/16 CORNER SEC. 28

SET : 2" X 41" IRON PIPE WITH BRASS CAP
8" FIR , S 4 E , 16.3' (SCRIBED "NW1/16S28 BT")
16" CHINQUAPIN , S 73 W , 19.0' (SCRIBED "NW1/16S28 BT")

1/4 CORNER 28 & 29

FOUND : WILFORD HAINES "T" IRON
29" CEDAR , N 58-3/4 E , 56.5' (CLOSED FACE - B.L.M. TAG)
50" FIR , S 69-1/2 W , 51.9' (PREVIOUSLY OPENED, NO MARKS, HAINES TAG)
22" FIR , S 76-1/4 W , 26.6' (CLOSED FACE, B.L.M. TAG)

1/4 CORNER 21 & 28

SET : 2" X 41" IRON PIPE WITH BRASS CAP
(18' EAST & 29' SOUTH OF CREEK)
24" CEDAR , N 18-1/2 E , 127.9' - PREVIOUSLY MARKED "1/4S"
22" FIR N 60 E , 167.2' - SCRIBED "1/4S21 BT"
29" FIR , S 89-1/2 E , 245.6' - SCRIBED "1/4S28 BT"
POWER POLE , S 20-3/4 E , 40.3'

E-W 1/64 CORNER 21 & 28

SET : 2" X 43" IRON PIPE WITH BRASS CAP
11" FIR , N 64 W , 3.9' - SCRIBED "1/64S21 BT"
9" FIR , S 19 E , 5.3' - SCRIBED "1/64S28 BT"
NOTE : "T" IRON SET BY HAINES IN C.S. 51/93 BEARS S 3'08"37" E , 414.45

C-E-NW 1/64 CORNER SECTION 28

SET : 5/8" X 28" REBAR WITH YELLOW PLASTIC CAP MKD. "PLS 752"
(BURIED 9" BELOW SURFACE OF ROCKED LOGGING ROAD)
17" FIR , N 47-1/2 E , 43.0' - SCRIBED "1/64S28 BT"
R.R. SPIKE IN SIDE OF 40" FIR STUMP , S 9-1/4 W , 44.7' (SCRIBED "1/64S28 BT") - DIST. TO R.R. SPIKE
NOTE : 5/8" REBAR SET BY HAINES IN C.S. M83-51 BEARS N 57'18"20" E , 40.29'

1/4 CORNER 27 & 28

FOUND : WILFORD HAINES "T" IRON
52" FIR STUMP , N 17-1/4 W , 15.2'
NO VISIBLE MARKS

CENTER-WEST 1/16 CORNER SEC. 28

SET : 2" X 42" IRON PIPE WITH BRASS CAP
11" FIR , S 35 W , 8.2' - SCRIBED "CW1/16S28 BT"
10" FIR , N 58 W , 7.5' - SCRIBED "CW1/16S28 BT"

- NARRATIVE -

THIS SURVEY WAS MADE IN JANUARY AND FEBRUARY, 1991 BY DONALD L. PEEL OF PEEL BAKER LAND SURVEYING, INC. THE PURPOSE OF THIS SURVEY WAS TO LOCATE AND MARK SOME OF THE PROPERTY LINES OF THE LAND OWNED BY WEYERHAEUSER COMPANY IN SECTION 28, T22S, R4W, W.M.. A WILD T1000 THEOMAT AND DISS E.D.M. WERE USED TO PERFORM THIS SURVEY. BEARINGS WERE BASED ON A SOLAR OBSERVATION. CLOSED RANDOM TRAVERSES WERE RUN BETWEEN FOUND CORNERS FOR CONTROL. OFFSETS FROM THE RANDOM TRAVERSE LINE TO THE TRUE PROPERTY LINE WERE CALCULATED AND USED TO DETERMINE THE POSITION OF THE TRUE LINE. THE TRUE PROPERTY LINE WAS MARKED IN THE FIELD BY BLAZING TREES (BLAZES NOTCHED AND PAINTED RED) ON BOTH SIDES OF THE TRUE LINE. THE NORTHEAST AND NORTHWEST SECTION CORNERS, THE EAST AND WEST 1/4 CORNERS AND THE WITNESS CORNER TO THE SOUTH 1/4 CORNER WERE ALL FOUND AND USED FOR CONTROL. THE NORTH 1/4 CORNER WAS SEARCHED FOR BUT NOT FOUND. SAID NORTH 1/4 CORNER WAS SET AT MIDPOINT BETWEEN THE NORTHEAST AND NORTHWEST SECTION CORNERS. THE POSITION FOR THE CENTER 1/4 CORNER WAS DETERMINED AT (BUT NOT SET) THE POINT OF INTERSECTION OF THE NORTH-SOUTH AND EAST-WEST CENTERLINES. THE CENTER-WEST 1/16 CORNER WAS SET AT MIDPOINT BETWEEN THE WEST 1/4 CORNER AND THE CENTER 1/4 CORNER. THE NORTH 1/16 CORNER 28 & 29 WAS SET AT MIDPOINT BETWEEN THE WEST 1/4 CORNER AND THE NORTHWEST SECTION CORNER. THE NORTHWEST 1/16 CORNER WAS SET AT THE POINT OF INTERSECTION OF THE NORTH-SOUTH AND EAST-WEST CENTERLINES OF THE NORTHWEST 1/4. THE PROPERTY CORNER ON THE NORTH LINE OF THE NE1/4NW1/4 WAS SET AT RECORD DISTANCE (DEED - BOOK 614 PAGE 914 DEED RECORDS) WEST OF THE NORTH 1/4 CORNER. THE E-W 1/64 CORNER 21 & 28 WAS SET AT MIDPOINT BETWEEN THE NORTH 1/4 CORNER AND THE POSITION FOR THE WEST 1/16 CORNER 21 & 28. THE C-E-NW 1/64 CORNER WAS SET AT MIDPOINT BETWEEN THE NORTHWEST 1/16 CORNER AND THE POSITION FOR THE CENTER-NORTH 1/16 CORNER. ALL CORNERS SET IN THIS SURVEY WERE MONUMENTED AS SHOWN ON THIS PLAT. UNLESS OTHERWISE NOTED, FOR ALL BEARING TREES MARKED IN THIS SURVEY, THE DISTANCE WAS MEASURED FROM THE CORNER TO A "W" NAIL IN THE LOWER BLAZE AND THE BEARINGS WERE MAGNETIC, VARIATION 20'.

BASIS OF BEARING : SOLAR OBSERVATION

SCALE : 1" = 400"

- CORNERS FOUND
- CORNERS SET THIS SURVEY
- PROPERTY LINE BLAZED
- () RECORD DATA G.L.O. 1856

WITNESS CORNER TO 1/4 CORNER 28 & 33

FOUND : 1-1/4" IRON PIPE WITH DOUGLAS CO. BRASS CAP DATED 1964
18" OAK , S 46-1/4 W , 50.4' - CLOSED FACE
24" OAK , S 69 W , 62.0' - CLOSED FACE
(B.T. FOR 1/4 CORNER)

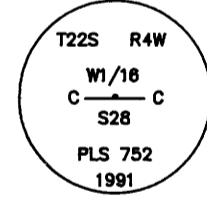
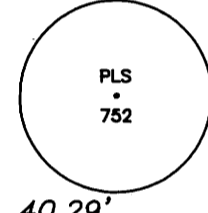
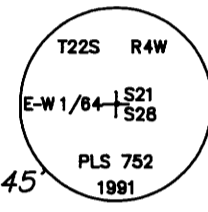
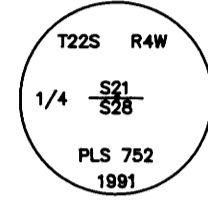
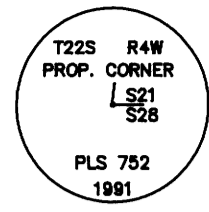
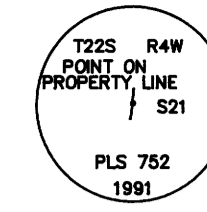
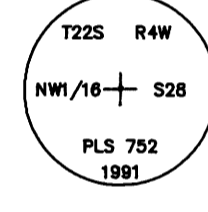
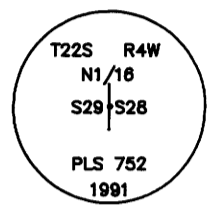
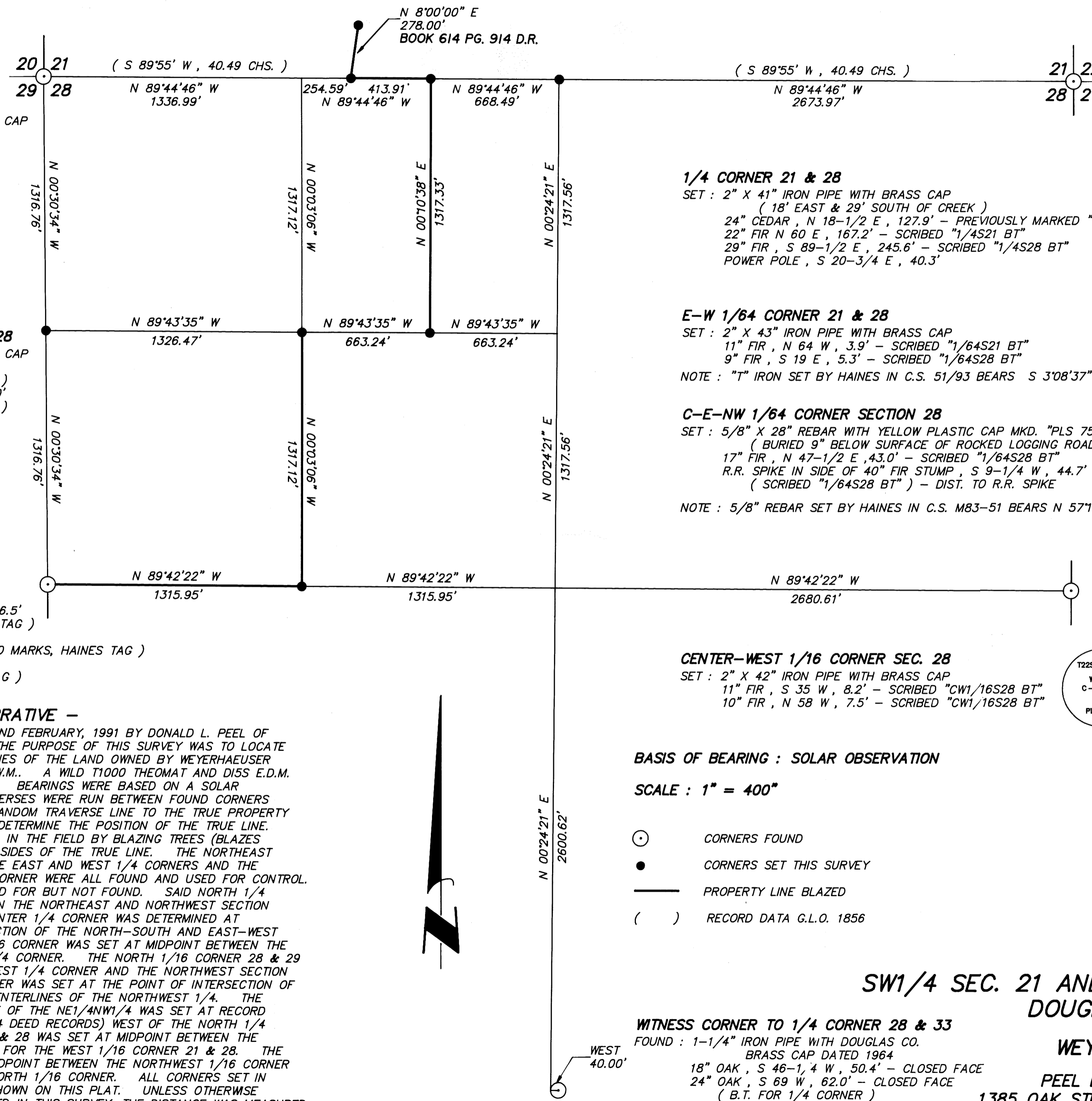
NOTE : 1/4 CORNER BEARS WEST, 40.00'

**SURVEY IN
SW1/4 SEC. 21 AND NW1/4 SEC. 28, T22S, R4W, W.M.
DOUGLAS COUNTY, OREGON**

FOR
WEYERHAEUSER COMPANY

BY
PEEL BAKER LAND SURVEYING, INC.
1385 OAK STREET - SUITE 3, EUGENE, OREGON
FEBRUARY 4, 1991

**COUNTY SURVEYORS FILE DATA
DO NOT REMOVE FROM OFFICE**



REGISTERED PROFESSIONAL LAND SURVEYOR
Donald L. Peel
OREGON JULY 8, 1988 DONALD L. PEEL 752

MAP FILE M111-66

MAP FILE M111-66