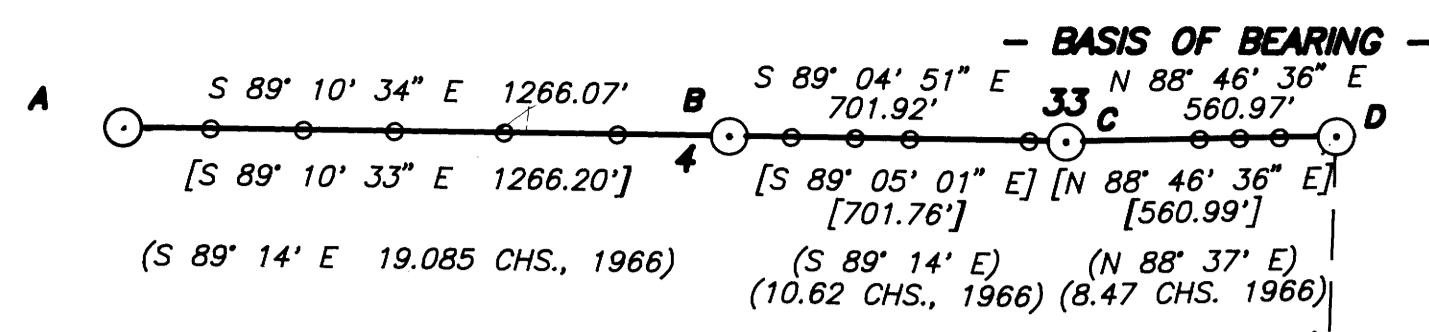


MAR 14 1991



- NARRATIVE -

THIS SURVEY WAS MADE IN JULY AND OCTOBER, 1990 BY DANIEL W. BAKER OF PEEL BAKER LAND SURVEYING, INC. THE PURPOSE OF THIS SURVEY WAS TO LOCATE AND MARK IN THE FIELD THE NORTH LINE OF SECTION 4 FROM THE EAST 1/16 CORNER TO THE WEST 1/16 CORNER AND ALSO THE SOUTH LINE FROM THE EAST 1/16 (80) CORNER TO THE EAST 1/16 CORNER AND THE EAST LINE FROM THE SOUTH 1/16 CORNER TO THE SOUTHEAST SECTION CORNER FOR INTERNATIONAL PAPER COMPANY. A KERN K1M THEODOLITE AND DM 502 EDM WERE USED TO PERFORM THIS SURVEY. BEARINGS WERE BASED ON THE NORTH LINE OF THE SECTION BETWEEN THE 1/4 CORNER SECTION 33 AND THE EAST 1/16 CORNER AS PER M-90-36. CLOSED TRANSIT TRAVERSES, WITH A MINIMUM ERROR OF CLOSURE OF 1'/10,000' WERE RUN BETWEEN CONTROL MONUMENTS AND ALONG THE LINES TO BE MARKED. OFFSETS WERE CALCULATED FROM THESE RANDOM TRAVERSE POINTS AND USED TO DETERMINE THE POSITION OF THE TRUE PROPERTY LINE. THE TRUE PROPERTY LINE WAS MARKED IN THE FIELD BY BLAZING TREES (BLAZES PAINTED RED) ON EITHER SIDE OF THE TRUE PROPERTY LINE AND BY SETTING 6 FOOT ALUMINUM POSTS AT RANDOM INTERVALS ALONG THE TRUE PROPERTY LINE. EACH POST HAD AN "INTERNATIONAL PAPER COMPANY" DECAL ATTACHED, MARKED WITH THE DISTANCE AND DIRECTION TO THE NEAREST CORNER AND AN ORANGE MAGNETIC LOCATOR WAS BURIED ALONGSIDE EACH POST. NO CORNERS WERE SET IN THIS SURVEY.

BASIS OF BEARING: NORTH LINE SECTION 4 FROM SOUTH 1/4 CORNER SECTION 33 AND EAST 1/16 CORNER AS PER M-90-36

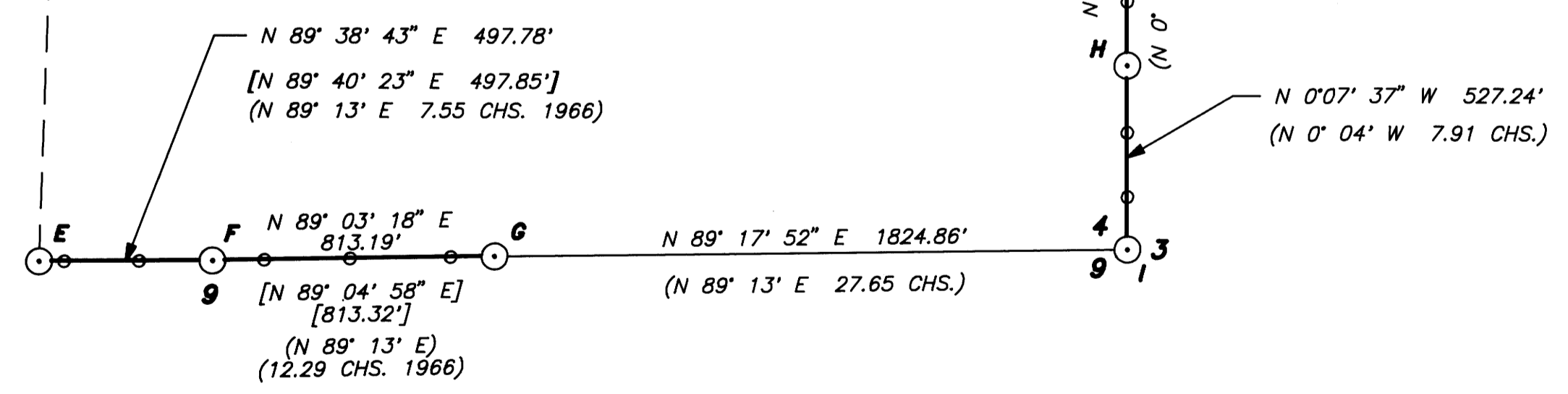
SCALE: 1" = 400'

- CORNERS FOUND
- BLAZED PROPERTY LINE
- 6 FOOT ALUMINUM POSTS
- () RECORD DATA - 1966 B.L.M. SURVEY
- [] RECORD DATA - M-90-36

REGISTERED PROFESSIONAL LAND SURVEYOR

OREGON JULY 16, 1982 DANIEL W. BAKER 1976

TIE N 1° 59' 56" E 4905.67'
[N 1° 59' 24" E, 4905.05']
- COMPUTED -



A WEST 1/16 CORNER SECTION 4 ONLY

FOUND: 1966 B.L.M. BRASS CAP
13" FIR, S 22° E, 18.8', 1966 B.T.
26" FIR, S 68° W, 57.6' 1966 B.T.

B NORTH 1/4 CORNER 4 ONLY

FOUND: 1966 B.L.M. BRASS CAP
8" FIR, S 4° E, 46.3', 1966 B.T.
26" FIR, S 50 1/2° W, 10.2' 1966 B.T.

C SOUTH 1/4 CORNER SECTION 33 ONLY

FOUND: 1953 G.L.O. BRASS CAP
13" FIR STUMP, S 54° E, 2.8', 1953 B.T.
18" FIR, N 23° E, 4.8', 1953 B.T. - RECORD - N 18° E
32" FIR, N 28 1/2° W, 33.5', (B.L.M. TAG - SCRIBE VISIBLE)
6" FIR, N 65° W, 10.6', (B.L.M. TAG - SCRIBE VISIBLE)

D EAST 1/16 CORNER SECTION 4 ONLY

FOUND: 1966 B.L.M. BRASS CAP
8" CEDAR STUMP, S 14° E, 22.9', 1966 B.T.
18" HEMLOCK STUB, S 60° W, 25.3', 1966 B.T.

E EAST 1/16 CORNER SECTION 4 ONLY

FOUND: 1966 B.L.M. BRASS CAP
24" ALDER STUMP, N 17° W, 68.0', 1966 B.T.
32" DOWNED HEMLOCK, N 20° E, 30.5', 1966 B.T.
SET: 12" HEMLOCK, N 19° E, 35.9' - SCRIBED E 1/16 S4BT

F NORTH 1/4 CORNER SECTION 9 ONLY

FOUND: 1966 B.L.M. BRASS CAP
16" HEMLOCK, S 53° E, 28.0' 1966 B.T.
20" HEMLOCK, S 34° W, 38.5' 1966 B.T.

G EAST 1/16(80) CORNER SECTION 4 ONLY

FOUND: 1966 B.L.M. BRASS CAP
17" ALDER STUMP, N 3° W, 55.4', 1966 B.T.
26" ALDER STUMP, N 33° E, 39.1', 1966 B.T.
SET: 16" MAPLE, N 7° W, 39.1' - SCRIBED E 1/16 S4BT

H WEST 1/4 CORNER SECTION 3 ONLY

FOUND: 1966 B.L.M. BRASS CAP
52" FIR, N 68° E, 25.1', ORIGINAL
14" HEMLOCK, S 40° E, 39.1', 1966 B.T.
52" FIR, N 36° W, 34.4', ORIGINAL

I CLOSING CORNER SECTIONS 4 & 9

FOUND: 1966 B.L.M. BRASS CAP
30" MAPLE, N 79° W, 34.6', 1966 B.T.

J SOUTH 1/16 CORNER SECTION 4 ONLY

FOUND: 1966 B.L.M. BRASS CAP
13" HEMLOCK, S 81° W, 5.0', 1966 B.T.
14" HEMLOCK, N 74° W, 23.8', 1966 B.T.

COUNTY SURVEYORS FILE DATA DO NOT REMOVE FROM OFFICE

SURVEY IN SECTION 4 T 21 S, R 9 W, W.M. DOUGLAS COUNTY, OREGON

CLIENT: INTERNATIONAL PAPER COMPANY

PEEL BAKER LAND SURVEYING, INC. 1385 OAK STREET, SUITE 3, EUGENE, OREGON (503) 343-7243

DATE: 12/13/90

19-111W

M 111-61