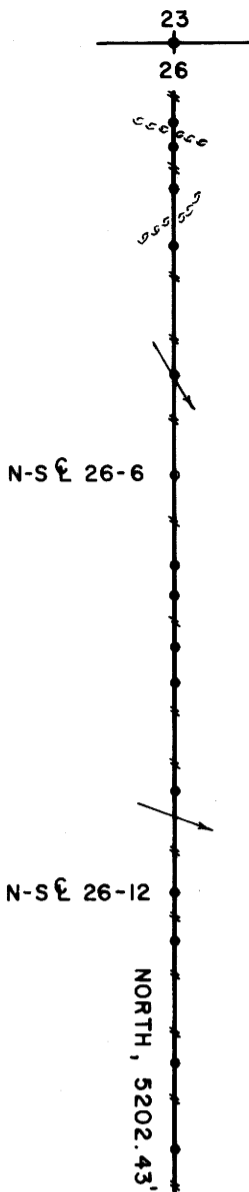


NORTH 1/4 CORNER SECTION 26

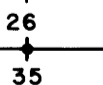
FD. 1989 B.L.M. BRASS CAP
 11" FIR, N60°W, 48.1' (SCRIBE VIS.), 1989 B.T.
 15" FIR, S68°W, 10.2' (SCRIBE VIS.), 1989 B.T.



SOUTH 1/4 CORNER SECTION 26

FD. 1990 B.L.M. BRASS CAP
 42" CEDAR, S29°W, 10.3' (SCRIBE VIS.), 1891 B.T.
 54" MAPLE, N23°W, 43.2' (SCAR VIS.), 1967 B.T.
 14" MAPLE, N72°E, 44.2' (SCRIBE VIS.), 1990 B.T.

BASIS OF BEARING - ASSUMED



LEGEND

- MONUMENTS FOUND AND USED FOR CONTROL
 - MONUMENTS SET, NO MONUMENTS SET THIS SURVEY
 - LINES MARKED AND BLAZED THIS SURVEY
 - () DATA OF RECORD
- BASIS OF BEARING, NORTH-SOUTH & SECTION 26 DISTANCES TO B.T.'S ARE CENTER MEASURE
- M.M. INDICATES LOCATION OF BURIED MAGNETIC MARKERS. MARKERS ARE FLUORESCENT ORANGE IN COLOR AND ARE BURIED, 12" TO 18" DEEP, ALONG LINE AS SHOWN.

NARRATIVE, THE PURPOSE OF THIS SURVEY IS TO BLAZE AND POST THE NORTH 1/2 OF THE NORTH-SOUTH & OF SECTION 26. THE NORTH 1/4 CORNER AND THE SOUTH 1/4 CORNER OF SECTION 26 WERE FOUND IN THE FIELD AS SHOWN AND USED AS CONTROL FOR THIS SURVEY. A RANDOM CONTROL TRAVERSE, USING A WILD T-16 THEODOLITE AND A DI-4L E.D.M., WAS RUN BETWEEN THE ABOVE MENTIONED CONTROLLING CORNERS. AN INVERSE WAS COMPUTED BETWEEN THE ABOVE TIED 1/4 CORNERS AND USED TO RUN A RANDOM PROPERTY LINE TRAVERSE ALONG THE NORTH-SOUTH & OF SECTION 26. OFFSETS WERE COMPUTED FROM THIS RANDOM PROPERTY LINE TRAVERSE TO THE TRUE PROPERTY LINE. PROPERTY LINES WERE MARKED WITH RED PAINTED BLAZES, YELLOW INTERNATIONAL PAPER BOUNDARY LINE DECALS ATTACHED TO 72" ALUMINUM POSTS AND BURIED FLUORESCENT ORANGE MAGNETIC MARKERS. ALUMINUM POSTS AND BURIED MAGNETIC MARKERS ARE REFERENCED BY A 4" x 6" ALUMINUM BOUNDARY LINE TAG NAILED TO A NEARBY TREE. TAG NOTES BEARING AND DISTANCE FROM TREE TO ALUMINUM POST OR BURIED MAGNETIC MARKER.

LOCATION OF BURIED MAGNETIC MARKERS

LOCATION	DISTANCE	DIRECTION	MARKER TYPE
N/4 COR.	0'	SOUTH	(AL. POST)
N-S & 26-1	167'	SOUTH	(M.M. & AL. POST)
N-S & 26-2	213'	SOUTH	(M.M.)
N-S & 26-3	301'	SOUTH	(M.M. & AL. POST)
N-S & 26-4	414'	SOUTH	(M.M. & AL. POST)
N-S & 26-5	686'	SOUTH	(M.M. & AL. POST)
N-S & 26-6	895'	SOUTH	(M.M. & AL. POST)
N-S & 26-7	1079'	SOUTH	(M.M.)
N-S & 26-8	1141'	SOUTH	(M.M. & AL. POST)
N-S & 26-9	1249'	SOUTH	(M.M.)
N-S & 26-10	1325'	SOUTH	(M.M. & AL. POST)
N-S & 26-11	1548'	SOUTH	(M.M. & AL. POST)
N-S & 26-12	1758'	SOUTH	(M.M. & AL. POST)
N-S & 26-13	1863'	SOUTH	(M.M. & AL. POST)
N-S & 26-14	2115'	SOUTH	(M.M. & AL. POST)
N-S & 26-15	2292'	SOUTH	(M.M. & AL. POST)
N-S & 26-16	2443'	SOUTH	(M.M. & AL. POST)
N-S & 26-17	2516'	SOUTH	(M.M.)
N-S & 26-18	2612'	SOUTH	(M.M. & AL. POST)
S/4 COR.	5202'	SOUTH	(AL. POST)

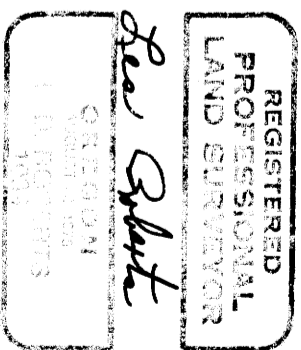


SURVEY FOR

INTERNATIONAL PAPER COMPANY
 N-S & SECTION 26, T20S, R7W
 DOUGLAS COUNTY, OREGON

BY
ROBERTS SURVEYING INC.
 29 WEST 29TH STREET
 EUGENE, OREGON 97405

FEBRUARY 13, 1991
 SCALE 1" = 400'



FILED
 MAR 13 1991
 COUNTY SURVEYOR
 DOUGLAS COUNTY, OREGON

C.S. 63/129
 MAP FILE M 111-60

COUNTY SURVEYORS FILE DATA
DO NOT REMOVE FROM OFFICE

C.S. 63/129
 MAP FILE M 111-60