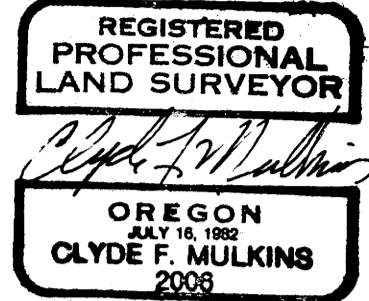


PROPERTY SURVEY LOCATED IN THE SE 1/4 OF SEC. 34 & THE W 1/2 OF SEC. 35, TWP. 22 S., RNG. 12 W., W.M., DOUGLAS CO., OREGON

COUNTY SURVEYORS FILE DATA DO NOT REMOVE FROM OFFICE

COUNTY SURVEYOR DOUGLAS COUNTY, ORE.



SURVEY FOR: INTERNATIONAL PAPER P.O. BOX 843 GARDINER, OR 97441-0045

SURVEY BY: CLYDE F. MULKINS, TIMBER CRUISING & ENGINEERING P.O. BOX 750 COOS BAY, OR 97420

NARRATIVE THE PURPOSE OF THIS SURVEY WAS TO MAKE A BOUNDARY LINE ADJUSTMENT AND LAND EXCHANGE OF PROPERTY OWNED BY INTERNATIONAL PAPER (IP), AND PROPERTY OWNED BY JAMES LINWOOD & SARAH K. THOMAS (L & T). CONTROL FOR THIS SURVEY WAS BASED ON A 1986 SURVEY SUBDIVIDING SECTION 35, BY LLOYD D. SMITH, LS 1101, MAP FILE "M100-38"; AND A 1987 SURVEY SUBDIVIDING SECTION 34, BY MARK HOYE, LS 2098, MAP FILE "M105-49". PROCEDURE FOLLOWED WAS TO ESTABLISH A NETWORK OF GPS SURVEY POINTS USING THE TRIMBLE NAVIGATION 4000 ST SYSTEM. LOCAL GRID COORDINATES WERE COMPUTED USING TRIMBLE SOFTWARE. THE TRIMBLE EQUIPMENT AND SOFTWARE ARE OWNED BY MENASHA CORPORATION OF NORTH BEND, AND USED UNDER A RENTAL CONTRACT. LOCAL GRID NETWORK LINES WERE ADJUSTED TO GEODETIC BEARINGS AND DISTANCES TO MEAN NETWORK ELEVATION TO HAVE A COMMON DATUM WITH THE CONTROL SURVEYS. TRAVERSING TO TIE RECORD CORNERS AND TO ESTABLISH THE BOUNDARY ADJUSTMENT LINE BEGAN AND ENDED ON GPS NETWORK POINT PAIRS. A TOPCON GTS-2B WAS USED FOR TRAVERSING. CALCULATIONS WERE MADE USING TRAVERSE PC SOFTWARE. FIELD WORK WAS DONE FROM 9/10/90 TO 10/23/90. AREAS IN THE SW 1/4 SEC. 35 & SE 1/4 SEC. 34 WERE DETERMINED HOLDING RECORD DISTANCES ALONG PORTIONS NOT REMEASURED. MAXIMUM DIFFERENCE BETWEEN RECORD MEASUREMENTS & LINES MEASURED WAS LESS THAN 0.2 FEET BETWEEN FOUND CORNERS. THIS IS AN INSIGNIFICANT DIFFERENCE FOR CALCULATING AREAS TO .01 ACRES AND CONSIDERING FOREST LAND VALUES. DISTANCES TO FOUND BEARING TREES IS TO THE BOTTOM OF FACE. DISTANCES TO NEW BEARING TREES IS TO 6" SPIKE SIDE CENTER.

LEGEND

- FOUND CORNERS AS SHOWN
SET 3-1/4" IP TIMBERLANDS OPERATING CO. ALUM. CAP (MAG. INSERT) ON 30" OR 36" BY 3/4" ALUM. ROD 1" TO 4" OUT OF GROUND (PC)
SET 6" ALUM. LINE POST (LP)
LINES BLAZED & PAINTED RED, FLAGGED RED
(DOUGLAS CO. SURVEY MAP FILE "M100-38" MEASUREMENTS)
(DOUGLAS CO. SURVEY MAP FILE "M105-49" MEASUREMENTS)
CALCULATED LINES BASED ON RECORDED SURVEYS

BOUNDARY - LINE CROSSINGS table with columns: PC#, BEARING, DIST., SUBDIVISION LINE. Lists crossings for sections 34 and 35.

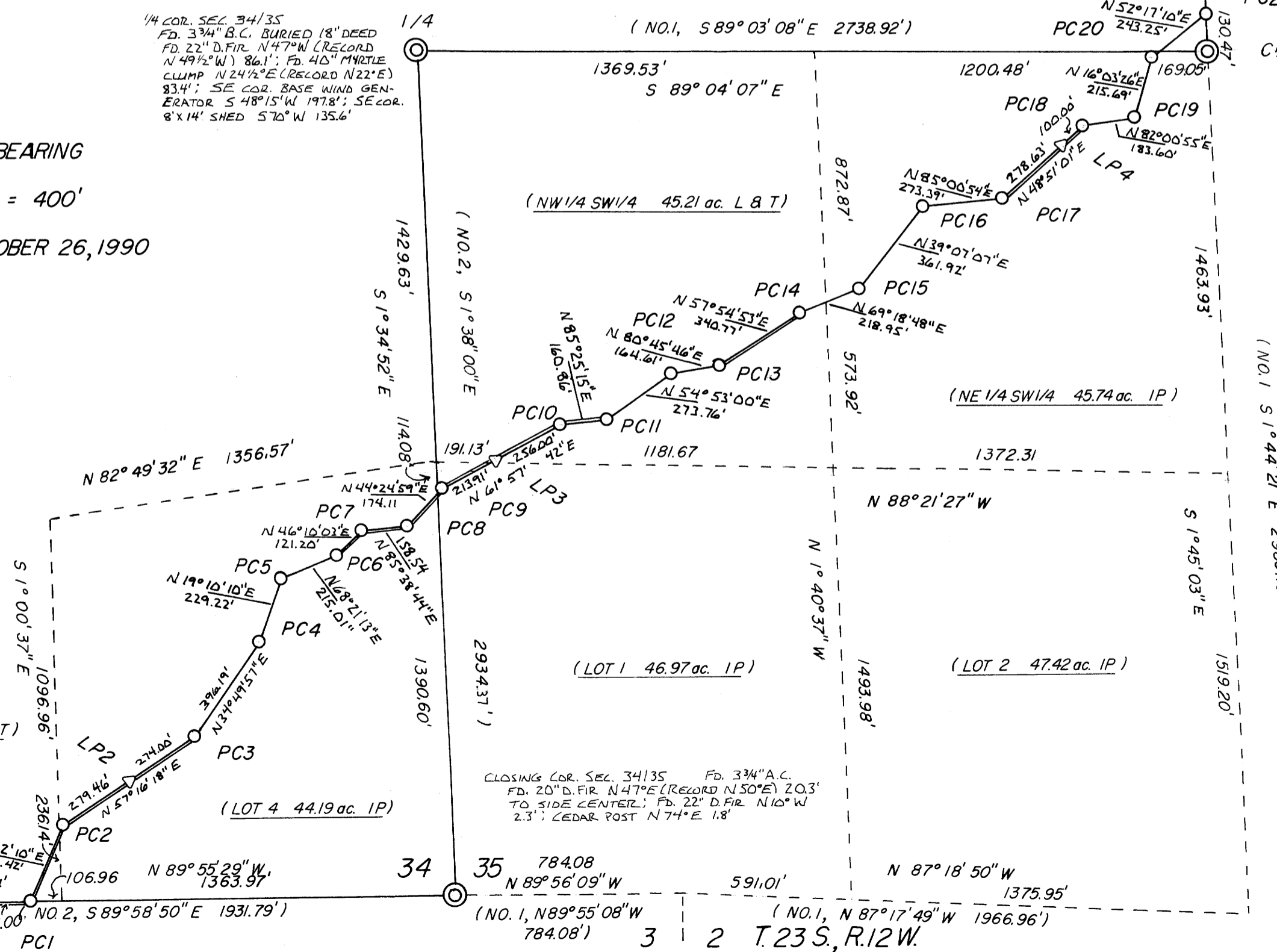
AGREEMENT EXCHANGE table with columns: DEED L & T TO IP, LOT, SEC., ACRES. Shows exchange of land between IP and L & T.



GEODETIC BEARING SCALE: 1" = 400' DATE OCTOBER 26, 1990

Vertical text on the left margin: N 1/4 SEC. 3... FD. 334" A.C. TO SIDE CENTER... MEASURED TO MAIL SIDE CENTER...

Vertical text on the left margin: N 1/4 SEC. 3... FD. 334" A.C. TO SIDE CENTER... MEASURED TO MAIL SIDE CENTER...



PROPERTY CORNER NOTES

Table with columns: PC#, WITNESS, BEARING, DISTANCE. Lists 21 property corners with their respective witness trees and measurements.

NOTE: DISTANCES MEASURED TO 6" SPIKE SIDE CENTER WITNESS. PROPERTY CORNERS MKD "PC-# PLS 2006 1990"

Table showing land exchange details: PLS 2006, PC1 MKD: S34, T22S, S3, T23S, PC 1, 1990; PC21 MKD: PC, S35, 21, T22S, R12W, 1990.

LINE POSTING NOTES

Table with columns: LP#, WITNESS, BEARING, DISTANCE. Lists 4 line posts with their witness trees and measurements.

NOTE: BURIED 1" PLASTIC INCASED MAGNET, 12" TO 18" DEEP, EASTERLY OF LP ON PROPERTY LINE.