

Survey To Set Property Corners  
in Sec.21, T30S, R2W, W.M., Douglas, Co. OR.

FOR: Richard T. Curtis & Marcy A. Curtis  
P.O. Box 6  
Tiller, OR 97484

FILED

BY: Harold V. Stockhoff PLS #1663  
1074 NE Knoll  
Roseburg, OR 97470

FEB 22 1991

SCALE: 1"=400'  
FEB 14, 1991

NARRATIVE:

The purpose of this Survey was to establish the property line between BLM, Kelsay, and Curtis so as to prevent the encroachment by either party during logging operations. I ran closed traverse in Sec. 21 using a Lietz Set 4 Electronic total station. I calculated and set the corners by standard subdivision procedure based on the location of the existing monuments.

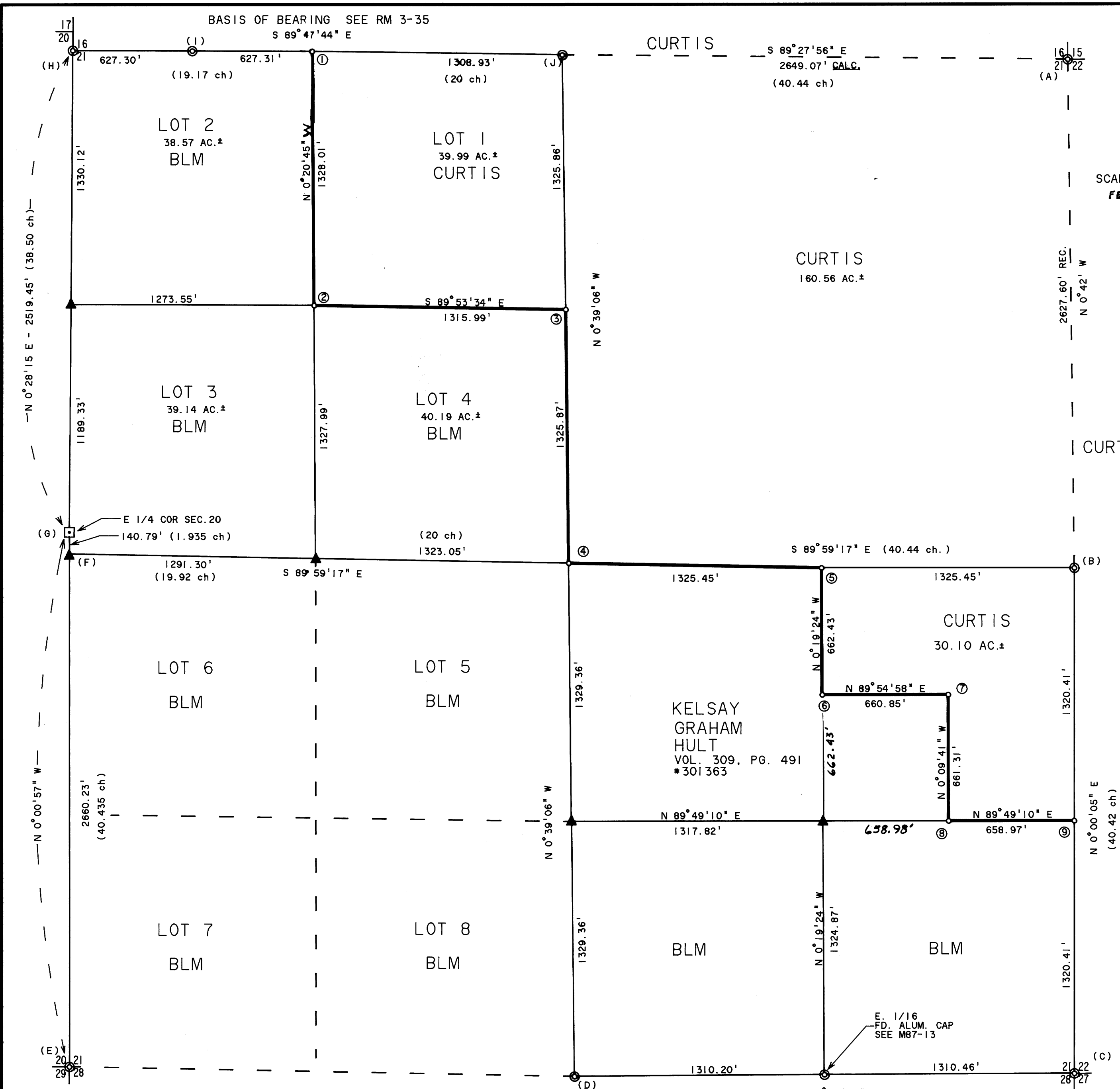
CONDITION of FOUND CORNERS

- (A)--NE Cor. Sec. 21 REN #62 No Changes.
- (B)--E 1/4 Cor. Sec. 21 REN #44 Both BT's are stumps.
- (C)--SE Cor. Sec. 21 REN #60 No changes.
- (D)--S 1/4 Cor. Sec. 21 REN #62 16" Hemlock now a stump.
- (E)--SW Cor. Sec. 21 REN #72 17" DFir now a stump, other BT's destroyed.
- (F)--W 1/4 Cor. Sec. 21 REN #79 BT's & Brass Cap destroyed by rock slide and clearcut.
- (G)--E 1/4 Cor. Sec. 20 REN #249 Both BT's are stumps, Brass Cap destroyed.
- (H)--NW Cor. Sec. 21 REN #251 12" Wfir burned and dead, other BT is a stump.
- (I)--W-W 1/64 Cor. Sec. 21 RM3-35 20" DFir now a stump, 6" DFir burned and dead.
- (J)--N 1/4 Cor. Sec. 21 REN #69 No changes.

NO.	CORNER	BEARING TREES	SCRIBED
①	W 1/16 (a)	N20°W - 10.4' - 12" Dia. Wfir WEST - 4.6' - 9" Dia. DFir	W 1/16 S 16 BT. W 1/16 S 21 BT.
②	NW 1/16	N50°W - 4.2' - 8" Dia. DFir South - 11.2' - 8" Dia. Yew	NW 1/16 BT. Bark Scribed NW 1/16 BT.
③	CN 1/16	S20°W - 3.6' - 15" Dia. Cedar S55°W - 23.8' - 6" Dia. Cedar	C N 1/16 BT. C N 1/16 BT.
④	C 1/4	N70°W - 20.8' - 8" Dia. Madrone N10°W - 10.4' - 10" Dia. Cedar N77°E - 17.2' - 12" Dia. Madrone S5°W - 8.7' - 8" Dia. Madrone	Bark Scribed C 1/4 BT. C 1/4 BT. Bark Scribed C 1/4 BT. Bark Scribed C 1/4 BT.
⑤	CE 1/16	N68°W - 22.5' - 10" Dia. Wfir S60°W - 16.75' - 7" Dia. SPine	CE 1/16 BT. CE 1/16 BT.
⑥	C-N-SE 1/64	N22°E - 21.65' - 12" Dia. DFir N59°W - 25.0' - 6" Dia. SPine	1/64 BT. 1/64 BT.
⑦	NE-SE 1/64	West - 43.25' - 9" Dia. Cedar S12°W - 64.88' - 10" Dia. Black Oak	1/64 BT. Bark Scribed 1/64 BT.
⑧	C-E-SE 1/64	N39°E - 7.55' - 12" Dia. Madrone S20°E - 16.2' - 12" Dia. DFir	Bark Scribed 1/64 BT. 1/64 BT.
⑨	S 1/16	S65°W - 44.9' - 6" Dia. DFir SPE - 55.0' - 14" Dia. Cedar	S 1/16 S 21 BT. S 1/16 S 22 BT.

ALL BT's ARE TAGGED, PAINTED & FLAGGED

(a) Set Corner in Salt Creek.



LEGEND:

- -Set 5/8" x 30" IR w/Plastic Cap marked PLS 1663
- ⊙ -Fd. Brass Cap or as noted.
- ▲ -Calculated Corner.
- -Temp. Cor., 40 Penny Nail w/Flagging.
- -Not Surveyed.
- ( ) -Record.
- -Prop. Line Blazed, Painted & Flagged.

REGISTERED  
PROFESSIONAL  
LAND SURVEYOR  
*Harold V. Stockhoff*  
OREGON  
JULY 14, 1978  
HAROLD V. STOCKHOFF  
1663

REFERENCES USED FOR SURVEY

- GLO Notes 6806, 6859, T30S, R2W
- GLO Plats, 1857, 1893, 1908, T30S, R2W
- RM 3-35 - Basis of Bearing
- CS 40/185 - Not used for Survey
- M 87-13
- Inst. No.'s 301363, 89-08553

COUNTY SURVEYORS FILE DATA  
DO NOT REMOVE FROM OFFICE

MAP FILE M111-49

M111-49