

# RECORD OF SURVEY for UNITED STATES FOREST SERVICE

located in  
**SECTION 36, TOWNSHIP 20 SOUTH  
RANGE 11 WEST, W. M. DOUGLAS COUNTY  
OREGON**

**ESLICK CADASTRAL  
CONTRACT #53-04T0-0-2030S**

See SEF Field Book "ESLICK"

**NARRATIVE SECTION 36:**

This survey involved Sections 26, 35 and 36, Township 20 South, Range 11 West, W.M., Douglas County, Oregon.

The original survey of the South and East lines of Section 36 was performed by John Meldrum, under contract dated December 12, 1866. The West Line was performed by William Thiel, under contract dated October 16, 1891. The North line was performed by William Thiel, under contract dated February 16, 1891. See my Section 26 NARRATIVE, page 1 of 6, for the NW Corner of Section 36. See my Section 35 NARRATIVE, page 3 of 6, for monuments found and set on the West Line of Section 36. I found the original N 1/4 Corner as remonumented by the County (CS53-66). I found the original Northeast Corner as remonumented by T. McCullough (CS55-142). I found and accepted the E 1/4 Corner as proportioned by Frank Pumphrey (M85-37). I found and accepted the original Southeast Corner as perpetuated by F. Cain (REM. #21) and remonumented by the County (CS53-66). I found and accepted the S 1/4 as proportioned by Ronald Stuntzner (M84-62). These corners gave me the control to subdivide Section 36 per the 1973 B.L.M. Manual of Surveying Instructions.

The Basis of Bearing of this survey was a solar observation.

GPS 201032  
LAT.=43°47'34.07014"  
LONG.=123°55'28.47195"  
NAD 27 Lambert Grid (South Zone)  
Y = 793,349.669  
X = 1,095,983.841

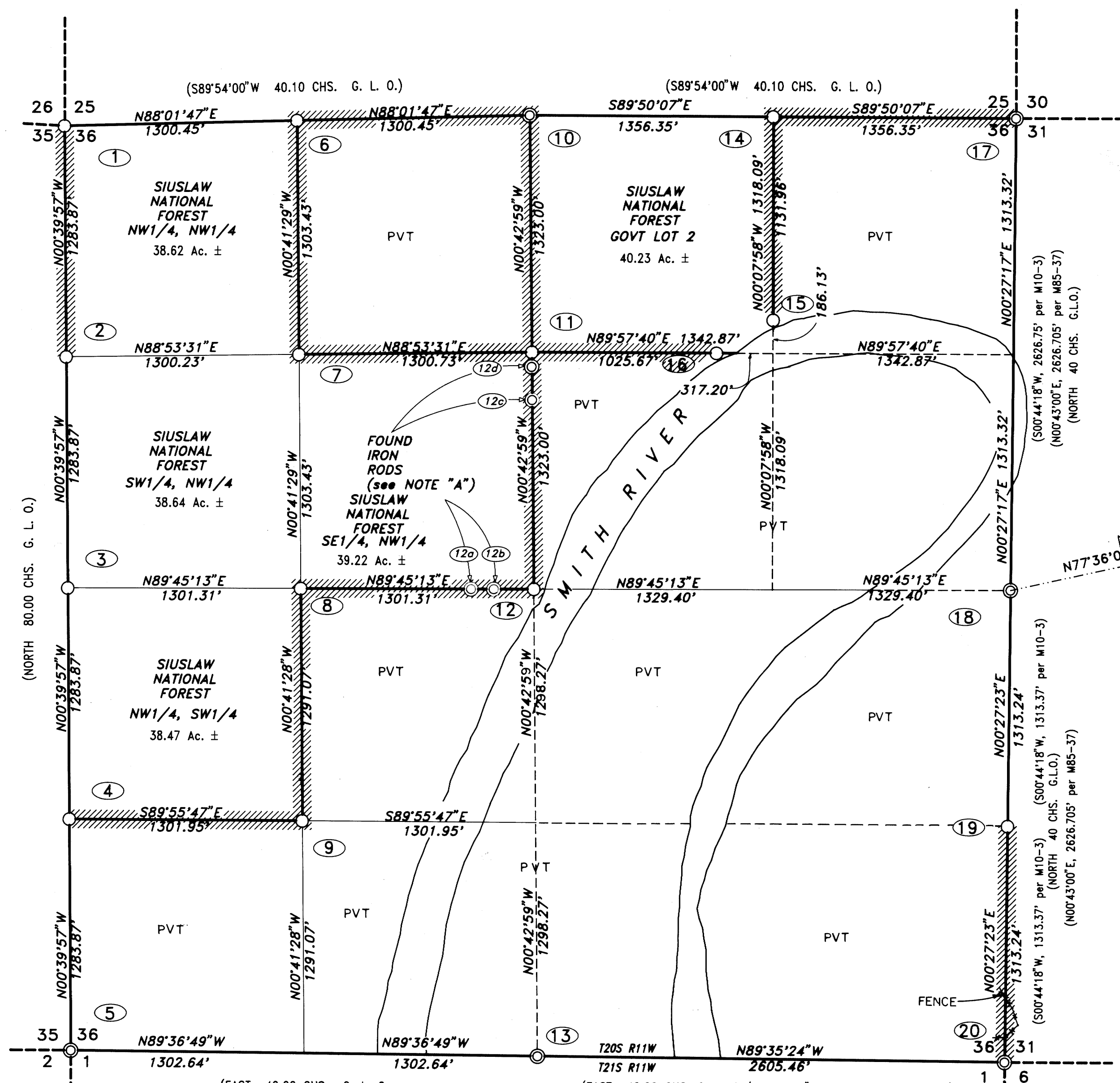
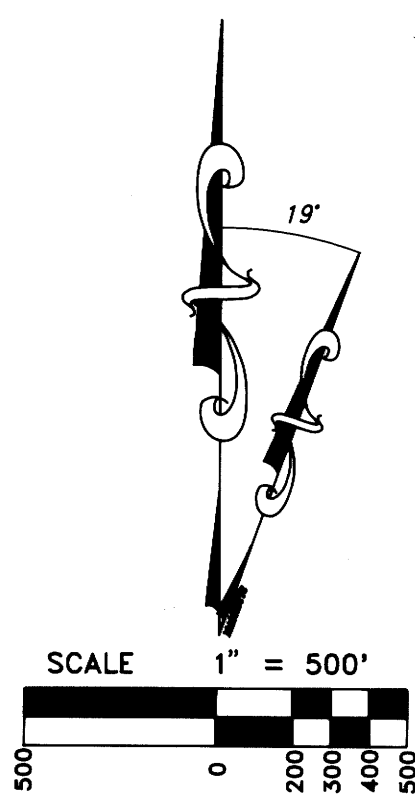
**NOTES:**

Bearings to existing Bearing Trees (BT) were taken with Staff Compass (Decl. = 19') to the Center of the tree and distances were measured to Side Center (SC). Bearings to new Bearing Trees (BTs) were taken with theodolite to the BT scribe and distance was measured with Electronic Distance Measuring (EDM) to a nail in Side Center (SC)

**NOTE "A":**

Found Stuntzner Engineering Iron Rods, as shown on M93-30 and controlling properties outside of National Forest Lands:

- bearings and distances from the C 1/4 Corner:
- I.R. 12a bears N87°50'40"W, 348.29' (14.60 N. of line)
  - I.R. 12b bears N86°38'02"W, 222.99' (14.05 N. of line)
  - I.R. 12c bears N00°43'30"W, 1061.91' (0.16 W. of line)
  - I.R. 12d bears N00°43'25"W, 1262.37' (0.16 W. of line)



(EAST 40.00 CHS. G. L. O.  
S89°36'25"E, 2605.02' per M84-62)

**LEGEND:**

- ⊙ Found corner (see corner data)
- Set monument (see corner data)
- (.....) Information of Public Records
- PVT OTHER PRIVATE LANDS
- ▨ Posted U.S.F.S. Property Line
- ▨▨▨▨ Posted International Paper Property Line
- △ Global Positioning Control Point (GPS)

(EAST 40.00 CHS. G. L. O./S89°36'25"E 2605.03' per M84-62)

**REGISTERED  
PROFESSIONAL  
LAND SURVEYOR**

*Harvey Wilcox*  
**OREGON  
HARVEY WILCOX  
2244**

**COUNTY SURVEYORS FILE DATA  
DO NOT REMOVE FROM OFFICE**

*Stuntzner Engineering  
& Forestry*

ENGINEERING - LAND SURVEYING - FORESTRY  
PLANNING - WATER RIGHTS

705 South 4th,  
Post Office Box 118  
Coos Bay, Oregon 97420

503-267-2872  
503-267-0588 FAX

DRAWN BY: A.A.	DATE: 12-15-90
CHECKED BY: H.W.	DRAWING NO.: 9092A36A
JOB NO.: 90-92	SHEET 5 OF 6

MAP FILE M111-425

MAP FILE M111-425