

COUNTY SURVEYORS FILE DATA
DO NOT REMOVE FROM OFFICE

RECORD OF SURVEY for UNITED STATES FOREST SERVICE

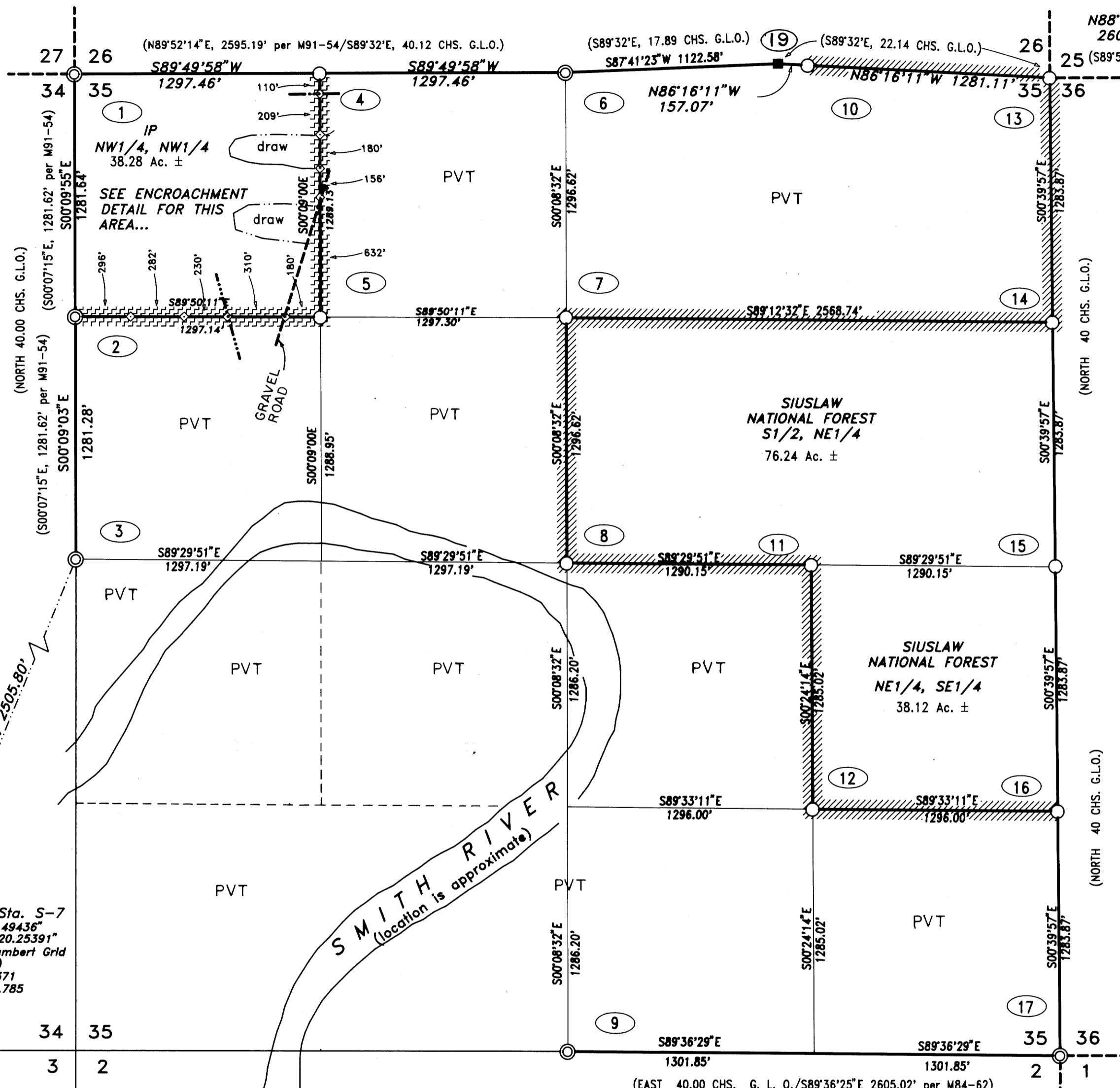
located in

SECTION 35, TOWNSHIP 20 SOUTH
RANGE 11 WEST, W. M. DOUGLAS COUNTY
OREGON

ESLICK CADASTRAL
CONTRACT #53-04T0-0-2030S

See SEF Field Book "ESLICK"

FILED
1989-12-15
COUNTY SURVEYOR
WASILLA COUNTY, OREGON



NARRATIVE SECTION 35

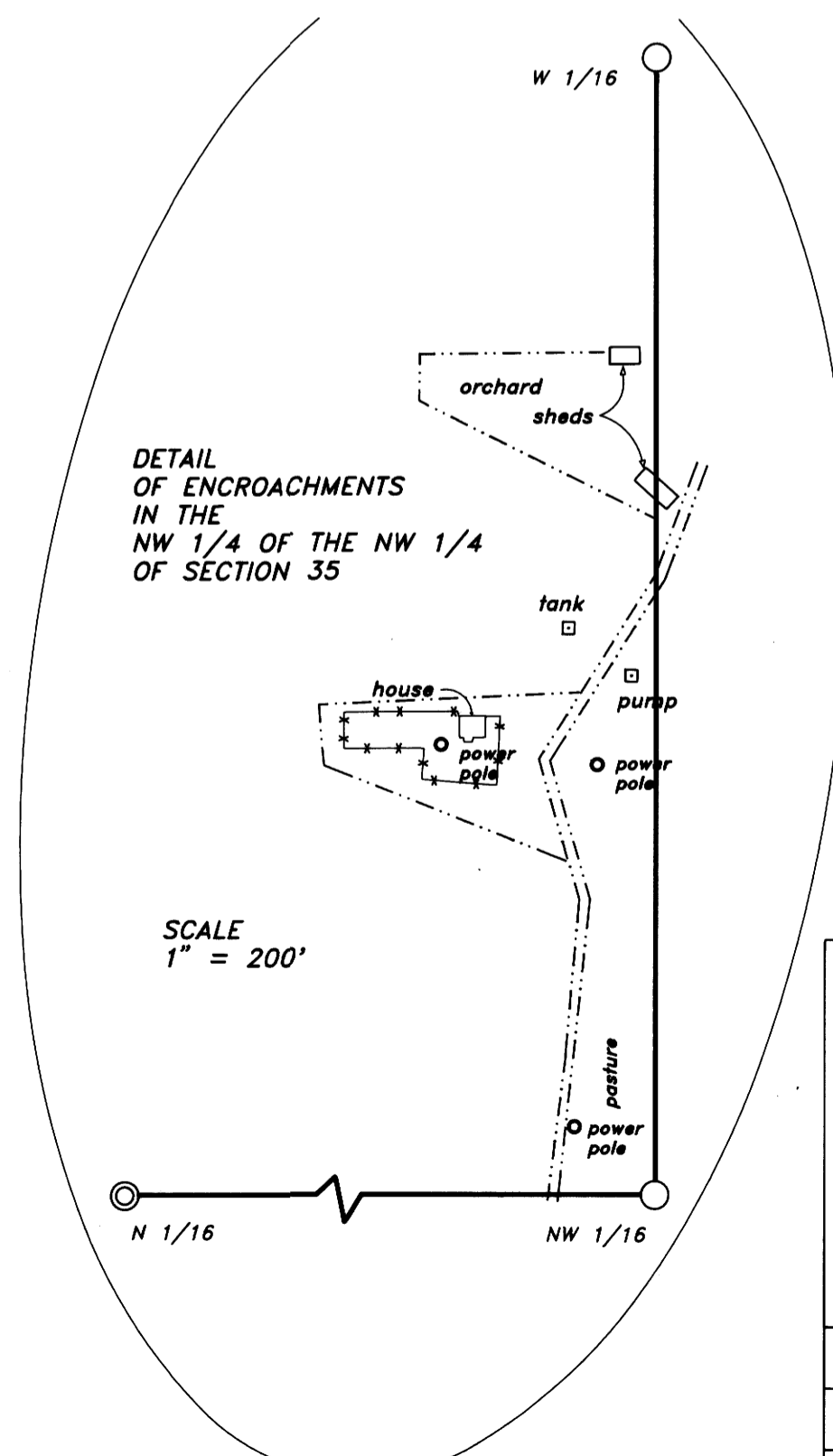
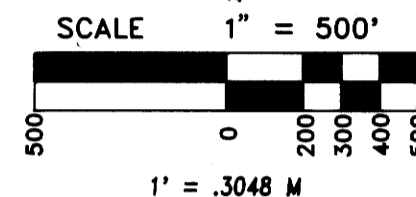
This survey involves Sections 26, 35 and 36, Township 20 South, Range 11 West, W.M., Douglas County, Oregon.

The original survey of the South Line of Section 35 was performed by John Meldrum, under contract dated December 12, 1866. The rest of Section 35 was surveyed by William Thiel, under contract dated October 6, 1879. See my Section 26 NARRATIVE, Page 1 of 6, for monuments found and set on the North Line of Section 35. I found and accepted the Southeast Corner of Section 35 as proportioned by Ronald Stuntzner (M84-62). I found no evidence of the E 1/4 Corner of Section 35 using the topo call to the divide, so I set the Corner at it's single proportionate position. The original topo call puts the Corner North of the divide but the proportionate position falls to the South, however it falls to the North of a spur ridge. I found and accepted the original S 1/4 of Section 35, as remonumented by Shaner (RM3-48). I found and accepted the N 1/16 and W 1/4 Corner of Section 35, as proportioned by Ronald Stuntzner (M91-54). I then subdivided the Section per the 1973 B. L. M. Manual of Surveying Instructions.

The Basis of Bearing of this survey was a solar observation.

NOTES:

Bearings to existing Bearing Trees (BT) were taken with Staff Compass (Decl. = 19') to the center of the tree and measured to Side Center (SC). Bearings to new Bearing Trees (BTs) were taken with theodolite to the BT scribe and distance was measured using Electronic Distance Measuring (EDM) to a nail in the Side Center (SC).



- LEGEND:**
- IP - INTERNATIONAL PAPER Co.
 - PVT - OTHER PRIVATE LANDS
 - (.....) Information of Public Records
 - Line Object
 - ▨ Posted U.S.F.S. Property Line
 - ▨ Posted International Paper Property Line
 - Drainage
 - Ridge Line
 - ◇ Line Posts
 - ⊙ Found corner (see corner data)
 - Set monument (see corner data)

REGISTERED
PROFESSIONAL
LAND SURVEYOR

Harvey Wilcox

OREGON
JULY 17, 1988
HARVEY WILCOX
2244

Stuntzner Engineering & Forestry

ENGINEERING - LAND SURVEYING - FORESTRY
PLANNING - WATER RIGHTS

705 South 4th,
Post Office Box 118
Coos Bay, Oregon 97420

503-287-2872
503-287-0688 FAX

DRAWN BY: A.A.	DATE: 12-15-90
CHECKED BY: H.W.	DRAWING NO.: 9092A35A
JOB NO.: 90-92	SHEET 3 OF 6

MAP FILE MILL - 47.G

MAP FILE MILL - 47.G