

COUNTY SURVEYORS FILE DATA
DO NOT REMOVE FROM OFFICE

RECORD OF SURVEY

for
UNITED STATES FOREST SERVICE

FILED
FEB 22 1991
COUNTY SURVEYOR
DOUGLAS COUNTY, OREGON

located in
**SECTION 26, TOWNSHIP 20 SOUTH
RANGE 11 WEST, W. M. DOUGLAS COUNTY
OREGON**

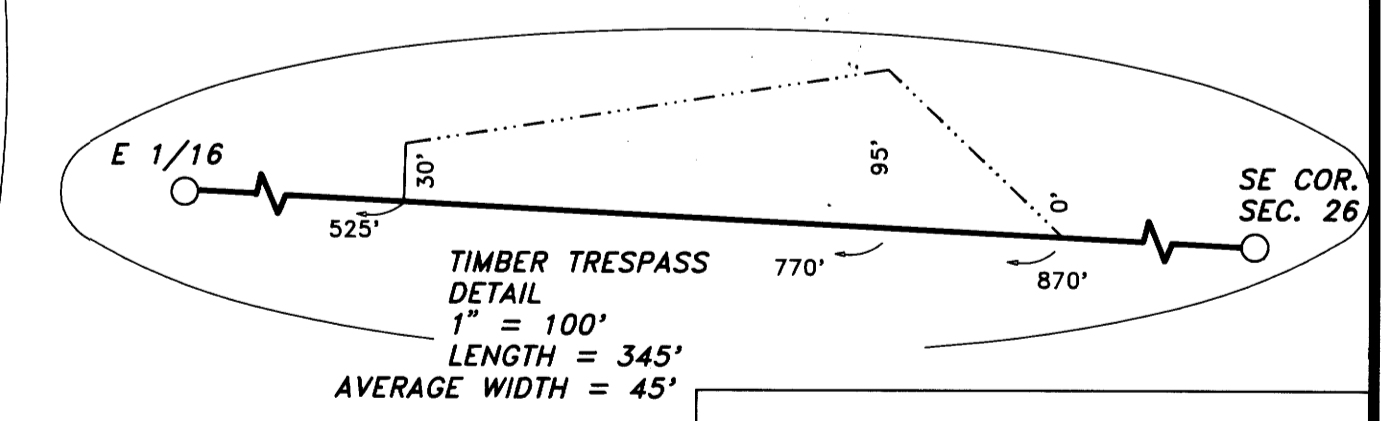
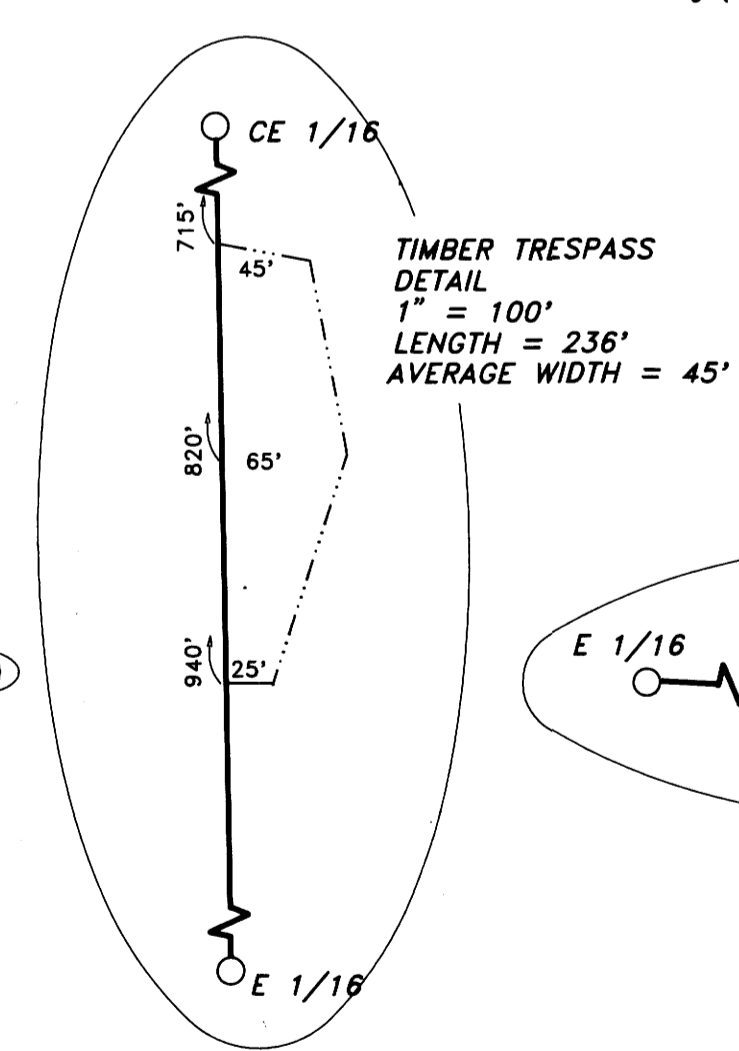
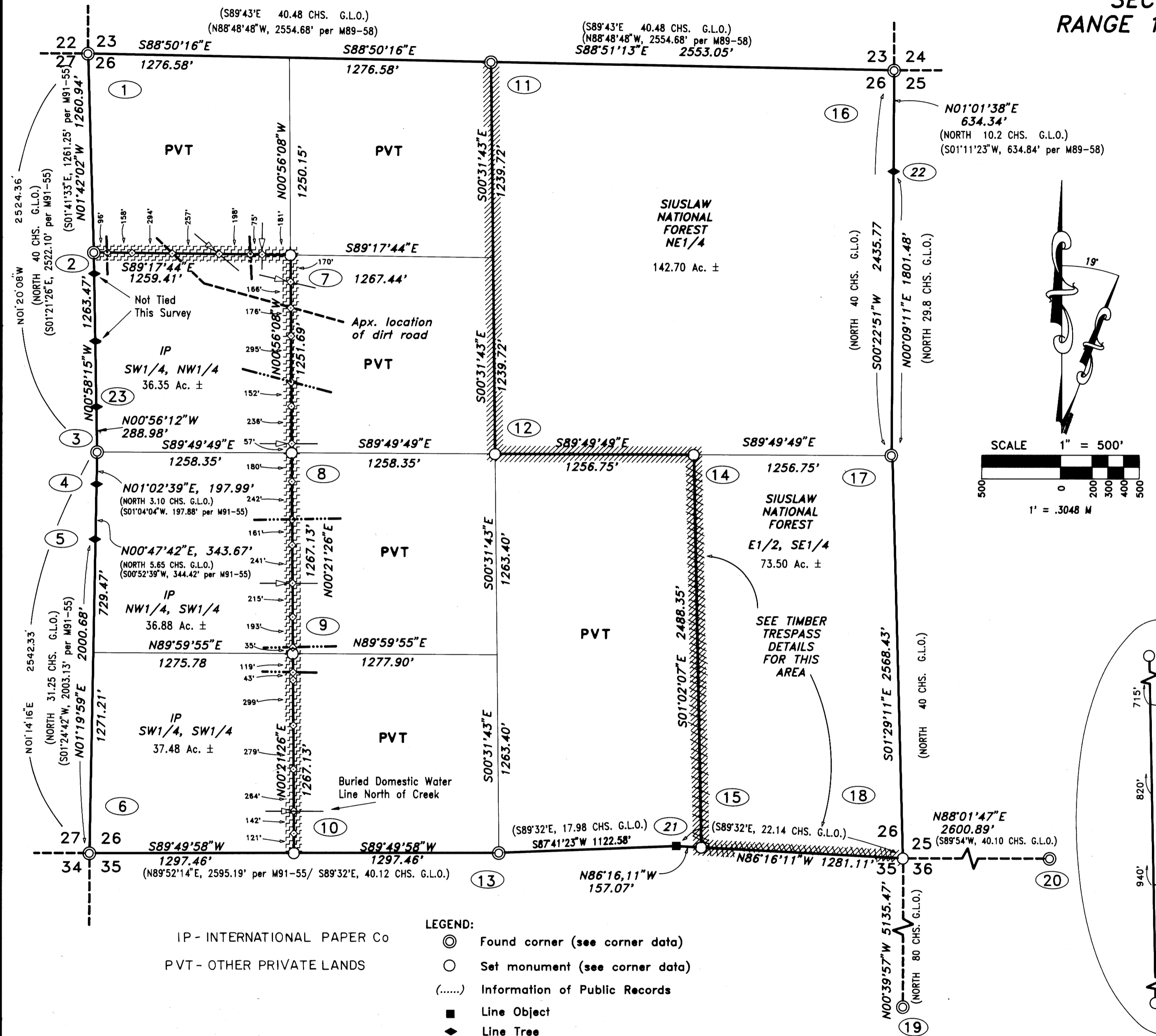
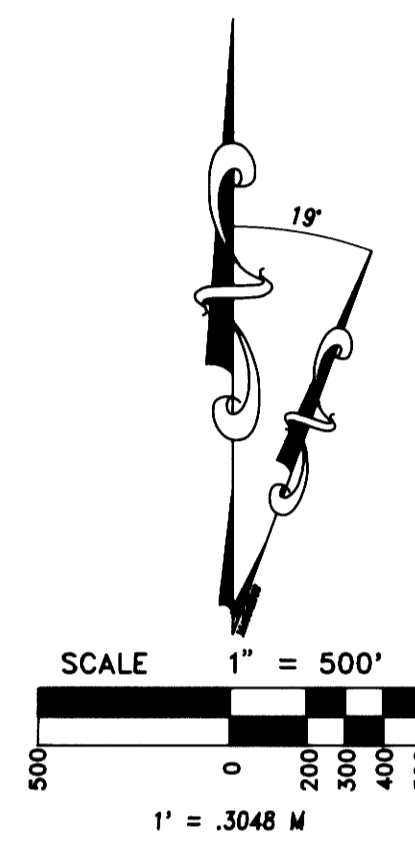
**ESLICK CADASTRAL
CONTRACT #53-04T0-0-2030S**

S.E.F. Field Book "ESLICK"

NARRATIVE SECTION 26:
This survey involved Section 26, 35 and 36, Township 20 South, Range 11 West, W.M., Douglas County, Oregon:
The original Survey of Section 26 was performed by William Thiel, under contract dated October 6, 1879 and there were no special circumstances involved. In 1953 Claude Kerr (County Re-mon Notes) located the line boulder on the South Line and reestablished the S1/4 from topo calls and the bearing call to the Bay House. In 1969 the County Surveyor found and re-monumented this corner. I accepted this corner as the best evidence of where the original corner position was. The present property owner, Mr. George Black, showed me a rock he believed to be the line boulder. The Forest Service has tagged a boulder to the West of this position, that matches the original description much better. I accepted the boulder tagged by the Forest Service. In 1981, Ronald Stuntzner (M91-55) found the original NW Corner and W1/4 Corner, along with 5 line trees. He proportioned in the SW Corner. I found and accepted these corners. In 1981, Robert Ward (M89-58) proportioned in the N1/4 and the NE Corner. I found and accepted these corners. I found the line tree South of the Northeast Corner, as shown on Survey M89-58 and traversed South to look for the E1/4. I could not identify any line trees. I did not find any evidence of the 1/4 Corner at the record distance but by matching topo calls, I found two stumps that match record B.T. calls. After a thorough search to eliminate any other possibilities, I accepted these as the original stumps. Continuing South, I was unable to find any corners or line trees until I reached the SE Corner of Section 35. I accepted this corner, which was proportioned in by Ronald E. Stuntzner in 1980 (M84-62). Returning to the approximate position of the SE Corner of Section 26, I traversed East to the N1/4 Corner of Section 36 and found the original as Re-monumented by the County. I set the Corner of Sections 25, 26, 35 and 36 by double proportion, using the N1/4 of Section 36, the SW Corner of Section 36, the line boulder on the South Line of Section 26, and the E1/4 of Section 26. I subdivided the Section per the 1973 B.L.M. Manual of Surveying Instructions and the 1975 Public Lands Case Book Page A3-4 for the E1/16 on the South Line and the calculated position of the S1/16 on the West Line.
The Basis of Bearing of this survey was a solar observation.

NOTES:

Bearings to existing Bearing Trees (BT) were taken with Staff Compass (Decl. = 19') to the center of the tree and measured to Side Center (SC). Bearings to new Bearing Trees (BTs) were taken with theodolite to the BT scribe and distance was measured using Electronic Distance Measuring (EDM) to a nail in the Side Center (SC).



- LEGEND:**
- ⊙ Found corner (see corner data)
 - Set monument (see corner data)
 - (.....) Information of Public Records
 - Line Object
 - ◆ Line Tree
 - ▨ Posted U.S.F.S. Property Line
 - ▩ Property Line Brushed and Posted
 - ▧ Posted International Paper Property Line
 - △ Global Positioning Control Point (GPS)
 - Drainage
 - - - Ridge Line
 - ◇ Line Posts

I, Harvey Wilcox, a Registered Land Surveyor in the State of Oregon, hereby certify that this plat and the notes hereon are a correct representation of a survey performed from March 1990 through January 1991, at the request of the U.S.D.A. Forest Service, in accordance with the Statutes of the State of Oregon.

REGISTERED PROFESSIONAL LAND SURVEYOR
Harvey Wilcox
OREGON
JULY 17, 1988
HARVEY WILCOX
2244

Stuntzner Engineering & Forestry
ENGINEERING - LAND SURVEYING - FORESTRY
PLANNING - WATER RIGHTS

705 South 4th, Post Office Box 118, Coos Bay, Oregon 97420
503-287-2872
503-287-0688 FAX

| | |
|------------------|-----------------------|
| DRAWN BY: A.A. | DATE: 12-15-90 |
| CHECKED BY: H.W. | DRAWING NO.: 9092A26A |
| JOB NO.: 90-92 | SHEET 1 OF 6 |

EXAMINED AND ACCEPTED FOR THE U.S. FOREST SERVICE
THIS 19th DAY OF FEBRUARY, 1991
Randall M. Janson, C.O.R.
I CERTIFY THAT THIS SURVEY WAS PERFORMED AT THE REQUEST OF THE SIUSLAW NATIONAL FOREST SUPERVISOR.
Randy A. Henrett 2/19/91
SIGNATURE DATE

MAP FILE M111-472A

MAP FILE M111-472A