

RECORD OF SURVEY
for
UNITED STATES FOREST SERVICE

FILED
FEB 22 1991
COUNTY SURVEYOR
DOUGLAS COUNTY, OREGON

located in
SECTION 26, TOWNSHIP 20 SOUTH
RANGE 11 WEST, W. M. DOUGLAS COUNTY
OREGON

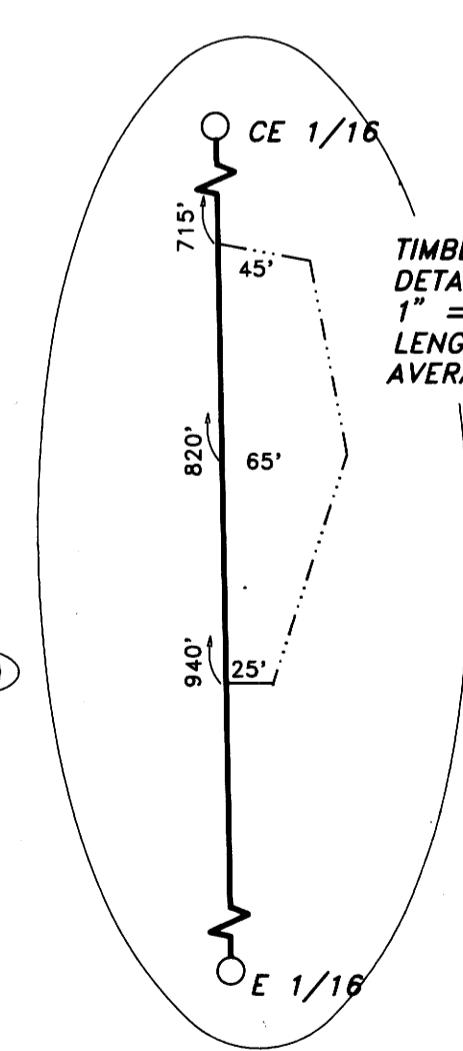
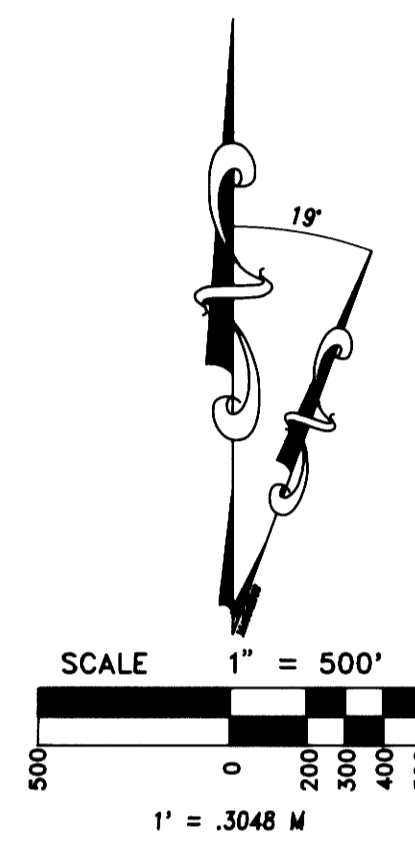
ESLICK CADASTRAL
CONTRACT #53-04T0-0-2030S

S.E.F. Field Book "ESLICK"

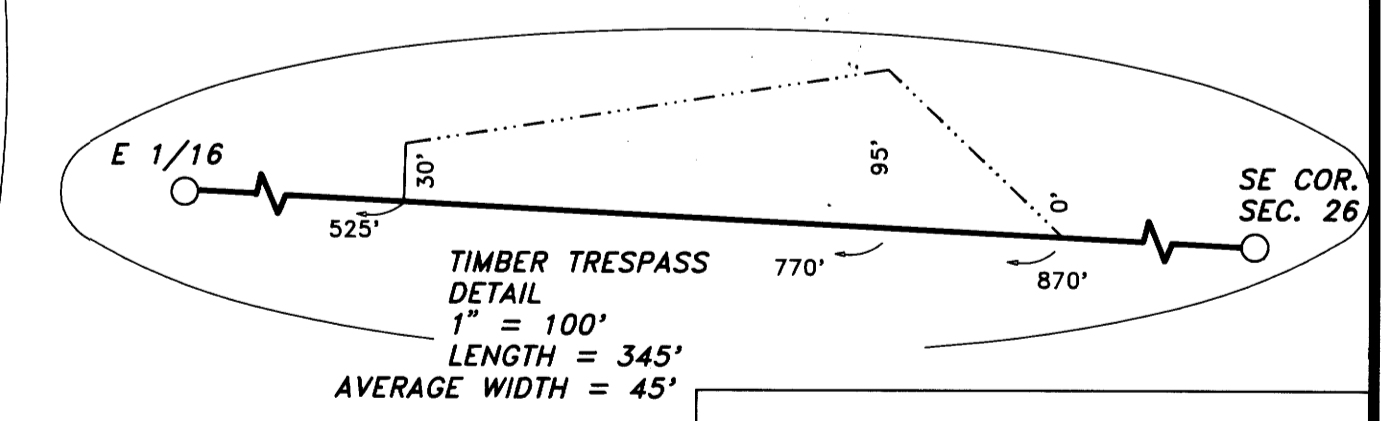
NARRATIVE SECTION 26:
This survey involved Section 26, 35 and 36, Township 20 South, Range 11 West, W.M., Douglas County, Oregon:
The original Survey of Section 26 was performed by William Thiel, under contract dated October 6, 1879 and there were no special circumstances involved. In 1953 Claude Kerr (County Re-mon Notes) located the line boulder on the South Line and reestablished the S1/4 from topo calls and the bearing call to the Bay House. In 1969 the County Surveyor found and re-monumented this corner. I accepted this corner as the best evidence of where the original corner position was. The present property owner, Mr. George Black, showed me a rock he believed to be the line boulder. The Forest Service has tagged a boulder to the West of this position, that matches the original description much better. I accepted the boulder tagged by the Forest Service. In 1981, Ronald Stuntzner (M91-55) found the original NW Corner and W1/4 Corner, along with 5 line trees. He proportioned in the NW Corner. I found and accepted these corners. In 1981, Robert Ward (M89-58) proportioned in the N1/4 and the NE Corner. I found and accepted these corners. I found the line tree South of the Northeast Corner, as shown on Survey M89-58 and traversed South to look for the E1/4. I could not identify any line trees. I did not find any evidence of the 1/4 Corner at the record distance but by matching topo calls, I found two stumps that match record B.T. calls. After a thorough search to eliminate any other possibilities, I accepted these as the original stumps. Continuing South, I was unable to find any corners or line trees until I reached the SE Corner of Section 35. I accepted this corner, which was proportioned in by Ronald E. Stuntzner in 1980 (M84-62). Returning to the approximate position of the SE Corner of Section 26, I traversed East to the N1/4 Corner of Section 36 and found the original as Re-monumented by the County. I set the Corner of Sections 25, 26, 35 and 36 by double proportion, using the N1/4 of Section 36, the SW Corner of Section 36, the line boulder on the South Line of Section 26, and the E1/4 of Section 26. I subdivided the Section per the 1973 B.L.M. Manual of Surveying Instructions and the 1975 Public Lands Case Book Page A3-4 for the E1/16 on the South Line and the calculated position of the S1/16 on the West Line.
The Basis of Bearing of this survey was a solar observation.

NOTES:

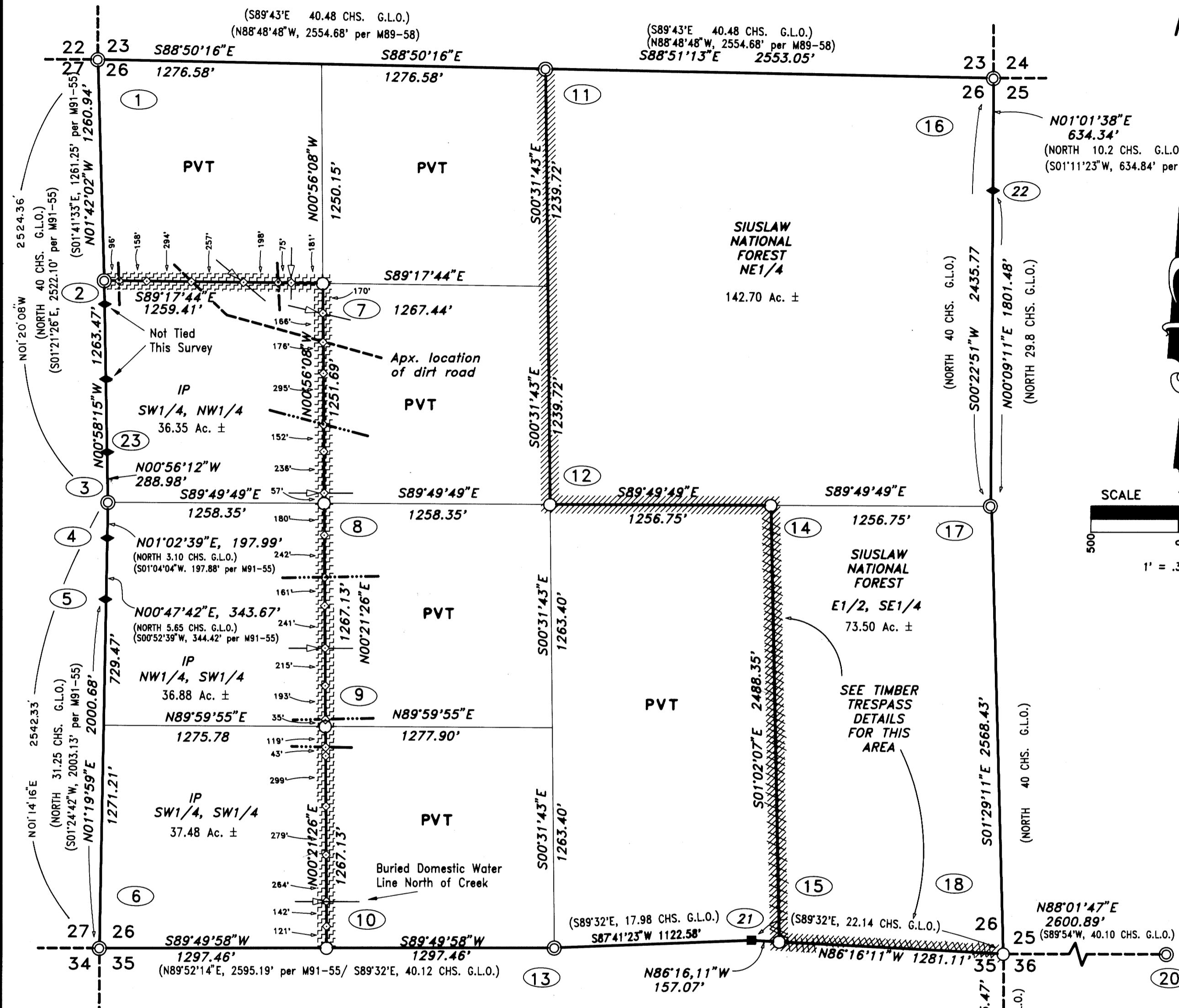
Bearings to existing Bearing Trees (BT) were taken with Staff Compass (Decl. = 19') to the center of the tree and measured to Side Center (SC). Bearings to new Bearing Trees (BTs) were taken with theodolite to the BT scribe and distance was measured using Electronic Distance Measuring (EDM) to a nail in the Side Center (SC).



TIMBER TRESPASS
DETAIL
1" = 100'
LENGTH = 236'
AVERAGE WIDTH = 45'



TIMBER TRESPASS
DETAIL
1" = 100'
LENGTH = 345'
AVERAGE WIDTH = 45'



- LEGEND:**
- ⊙ Found corner (see corner data)
 - Set monument (see corner data)
 - (.....) Information of Public Records
 - Line Object
 - ◆ Line Tree
 - ▨ Posted U.S.F.S. Property Line
 - ▩ Property Line Brushed and Posted
 - ▧ Posted International Paper Property Line
 - △ Global Positioning Control Point (GPS)
 - Drainage
 - - - Ridge Line
 - ◇ Line Posts

I, Harvey Wilcox, a Registered Land Surveyor in the State of Oregon, hereby certify that this plat and the notes hereon are a correct representation of a survey performed from March 1990 through January 1991, at the request of the U.S.D.A. Forest Service, in accordance with the Statutes of the State of Oregon.

REGISTERED
PROFESSIONAL
LAND SURVEYOR

Harvey Wilcox
OREGON
JULY 17, 1988
HARVEY WILCOX
2244

Stuntzner Engineering
& Forestry

ENGINEERING - LAND SURVEYING - FORESTRY
PLANNING - WATER RIGHTS

705 South 4th,
Post Office Box 118
Coos Bay, Oregon 97420

503-287-2872
503-287-0688 FAX

DRAWN BY: A.A.	DATE: 12-15-90
CHECKED BY: H.W.	DRAWING NO.: 9092A26A
JOB NO.: 90-92	SHEET 1 OF 6

EXAMINED AND ACCEPTED FOR THE U.S. FOREST SERVICE
THIS 19th DAY OF FEBRUARY, 1991
Randall M. Janson, C.O.R.
I CERTIFY THAT THIS SURVEY WAS PERFORMED AT THE
REQUEST OF THE SIUSLAW NATIONAL FOREST SUPERVISOR.
Randy A. Henrett 2/19/91
SIGNATURE DATE

MAP FILE M.L.L.L. - 472A

MAP FILE M.L.L.L. - 472A

ESLICK CADASTRAL

CONTRACT #53-04T0-0-2030S

COUNTY SURVEYORS FILE DATA
DO NOT REMOVE FROM OFFICE

FILED
FEB 22 1990
COUNTY SURVEYOR
CLATSOP COUNTY, OREGON

MAP FILE # 472B

CORNER NO.

MONUMENT

ACCESSORIES

CORNER NO.

MONUMENT

ACCESSORIES



1

Found 2 3/4" Iron Cap on a 2 1/2" Galv. Iron Pipe, 16" high, per CS 58 - 260

Found B.T.:
32" Alder, Visible B.S., F&B Tags, bears S30W 39.61'
48" School Marm Alder B.S., F&B Tags, bears N04W, 45.11'
32" Hemlock, healed face, F&B Tags, bears N30E, 36.62'



11

Found 3" Aluminum Cap on a 2 1/2" Aluminum Pipe per CS M89-58

Found B.T.:
16" Alder, B.S., bears S52E, 52.4' to SC (per CS M89-58)
11" Alder, B.S., bears N07W, 33.6' to SC (per CS M89-58)
Mkd. B.T.:
12.5" Alder, B.S. "T20W R11W S1/4 S23 BT", with Tags and Washer, bears N47E, 24.97' to SC
10.5" Alder, B.S. "T20W R11W N1/4 S26 BT" with Tags and Washer, bears S50W, 47.15' to SC

SET RM:
Std. U.S.F.S. Disk: "RM N1/4 S26 N019W 50.98 1990 RLS 2244", bears S0019E, 50.98'

Mkd. B.T.:
16" Douglas Fir, F.S. "C1/4 S26 BT", Tags & Washer, bears N4815E, 17.36' to SC
22" Douglas Fir, F.S. "C1/4 S26 BT", Tags & Washer, bears S32E, 12.53' to SC
15" Douglas Fir, F.S. "C1/4 S26 BT", Tags & Washer, bears S64W, 27.54' to SC

Set R.M.:
Std. U.S.F.S. Disk: "RM C1/4 S26 S0028E 51.00 1990 RLS2244 bears N0028W, 51.00'

Found B.T.:
20" Maple, healed face, bears N69E, 74.8' to SC (76' per CS41-119)
12" Maple, healed face, bears S38W, 93.2' to SC (96' per CS41-119)

Mkd. B.T.:
13" Alder, B.S. "T20S R11W S1/4 S26 BT", TAGS, bears N0730W, 14.10' to SC

Mkd. B.O.:
Rock; 2.65' high, 4.5' long, 2.4' wide with "X" and tag, bears N78E, 3.79'

Mkd. B.T.:
17" Douglas Fir, F.S., "CE1/16 S26 BT", Tags & Washer, bears S40W, 20.32' to SC
41" Douglas Fir, F.S., "CE1/16 S26 BT", Tags & Washer, bears N31W, 20.09' to SC

Mkd. B.T.:
14" Douglas Fir, F.S. "E1/16 S35 BT", Tags & Washer, bears S2030E, 21.89' to SC
14" Douglas Fir, F.S. "E1/16 S26 BT", Tags & Washer, bears N5245W 13.39' to SC

Found B.T.:
8" Fir, Healed face, bears N64E, 22.5' to SC (per CS M89-58)
25" Fir, Scribbled, bears S3930E, 71.9' to SC (per CS M89-58)
52" Fir, healed face, bears N52W, 30.8' to SC (28.9' per CS M89-58)

Found B.O.:
2' wide Sandstone Ledge, with "X" bears S73W, 27.4' to SC (S7015W, 27.5' per CS M89-58)

Found B.T.:
Original rotten Fir Stump bears N16W, 13.2' to face
Original rotten Fir Stump bears N18E, 30.4' to face
Mkd. B.T.:
89" Fir, F.S. "W1/4 S25 BT", Tags and Washer, bears S61E, 37.89' to SC
40" Maple, F.S. "E1/4 S26 BT", Tags and Washer, bears S0615W, 26.61' to SC
27" Maple F.S. "E1/4 S26 BT", Tags and Washer, bears N8615W, 40.01' to SC
44" Fir, F.S. "W1/4 S25 BT", Tags and Washer, bears N1445E, 48.31' to SC

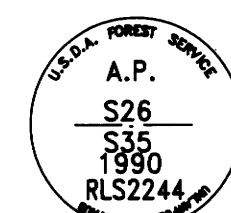
Mkd. B.T.:
38" Douglas Fir, F.S. "T20S R11W S25 BT", Tags & Washer, bears N2515E, 39.45' to SC
16" Douglas Fir, F.S. "T20S R11W S36 BT", Tags & Washer, bears S7630E, 13.77' to SC
40" Douglas Fir, School Marm, F.S., "T20S R11W S26 BT", Tags & Washer, bears N2030W, 3.12' to SC

Set R.M.:
Std. U.S.F.S. Disk "RM T20S R11W S26 S8311E, 40.56' 1990 RLS2244", bears N8311W, 40.56'

Found B.T.:
10" Douglas Fir, with "X" at B. H., bears West, 12.2' to SC
12" Douglas Fir, with visible scribe, bears N44W, 12.9' to SC
17" Douglas Fir, with healed Face, bears S49E, 7.5' to SC
11" Douglas Fir, with healed Face, bears S24W, 3.4' to SC

Found B.T.:
Original 52.5" Cedar, healed face, bears S87W, 15.8' to SC
12" Hemlock, healed face, bears N70W, 21.5' to SC
33" Cedar, healed face, bears S61E, (S61W per CS53-66), 32.7' to SC

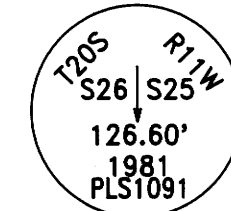
SECTION 26 TOWNSHIP 20 SOUTH RANGE 11 WEST W. M.



21

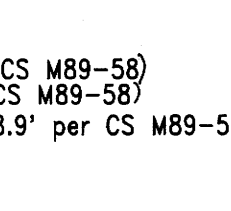
Set 3" Aluminum Rock Cap on Boulder

Mkd. B.T.:
17" Douglas Fir F.S. "BT", Tags and Washer bears S6530W 6.7' to S.C., 16" Douglas Fir F.S. "BT", Tags and Washer bears S19E 21.7'



22

Found Original Line Tree 60" Douglas Fir with Witness Corner (see 22a)



22a

Found B.T.:
29" Cedar with visible F.S. bears S4015W 71.6' per CS M89-58, 61" Douglas Fir with visible F.S. bears S3445E 13.1' per CS M89-58

23

Found Original Line Tree 64" Douglas Fir Stump

ABBREVIATIONS:

- B.S. = BARK SCRIBE
- F&B = FRONT AND BACK
- F.S. = FACE SCRIBE
- B.T. = BEARING TREE
- B.O. = BEARING OBJECT
- R.M. = REFERENCE MONUMENT
- SC = SIDE, CENTER
- B.H. = BRESTH HIGH
- GLV. = GALVANIZED
- MKD. = MARKED
- REM. = REMONUMENTATION RECORDS

STD. U.S.F.S. DISK = 3" ALUMINUM DISK ON 2 1/2" X 30" ALUMINUM PIPE

REGISTERED PROFESSIONAL LAND SURVEYOR

Harvey Wilcox

OREGON MAY 17, 1988 HARVEY WILCOX 2244

Stuntzner Engineering & Forestry

ENGINEERING - LAND SURVEYING - FORESTRY
PLANNING - WATER RIGHTS

705 South 4th, Post Office Box 118 Coos Bay, Oregon 97420
503-267-2872
503-267-0686 FAX

DRAWN BY: A.A.	DATE: 12-15-90
CHECKED BY: H.W.	DRAWING NO.: 9092A26B
JOB NO.: 90-92	SHEET 2 OF 6

MAP FILE # 472B

**COUNTY SURVEYORS FILE DATA
DO NOT REMOVE FROM OFFICE**

RECORD OF SURVEY for UNITED STATES FOREST SERVICE

located in

**SECTION 35, TOWNSHIP 20 SOUTH
RANGE 11 WEST, W. M. DOUGLAS COUNTY
OREGON**

**ESLICK CADASTRAL
CONTRACT #53-04T0-0-2030S**

See SEF Field Book "ESLICK"

NARRATIVE SECTION 35

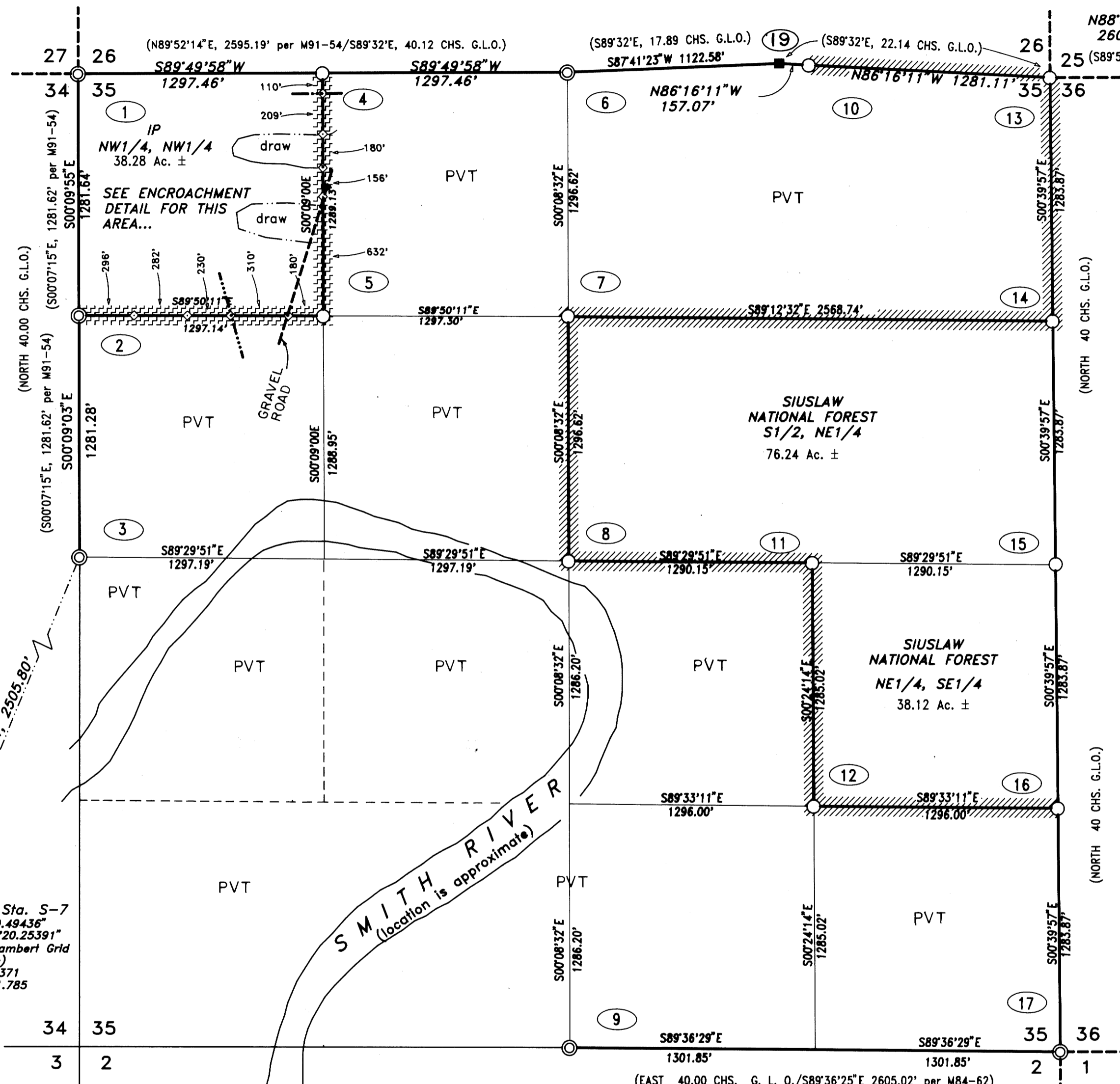
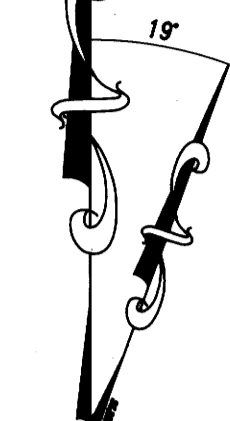
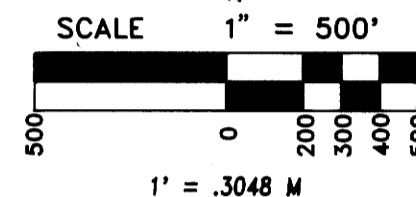
This survey involves Sections 26, 35 and 36, Township 20 South, Range 11 West, W.M., Douglas County, Oregon.

The original survey of the South Line of Section 35 was performed by John Meldrum, under contract dated December 12, 1866. The rest of Section 35 was surveyed by William Thiel, under contract dated October 6, 1879. See my Section 26 NARRATIVE, Page 1 of 6, for monuments found and set on the North Line of Section 35. I found and accepted the Southeast Corner of Section 35 as proportioned by Ronald Stuntzner (M84-62). I found no evidence of the E 1/4 Corner of Section 35 using the topo call to the divide, so I set the Corner at it's single proportionate position. The original topo call puts the Corner North of the divide but the proportionate position falls to the South, however it falls to the North of a spur ridge. I found and accepted the original S 1/4 of Section 35, as remonumented by Shaner (RM3-48). I found and accepted the N 1/16 and W 1/4 Corner of Section 35, as proportioned by Ronald Stuntzner (M91-54). I then subdivided the Section per the 1973 B. L. M. Manual of Surveying Instructions.

The Basis of Bearing of this survey was a solar observation.

NOTES:

Bearings to existing Bearing Trees (BT) were taken with Staff Compass (Decl. = 19') to the center of the tree and measured to Side Center (SC). Bearings to new Bearing Trees (BTs) were taken with theodolite to the BT scribe and distance was measured using Electronic Distance Measuring (EDM) to a nail in the Side Center (SC).



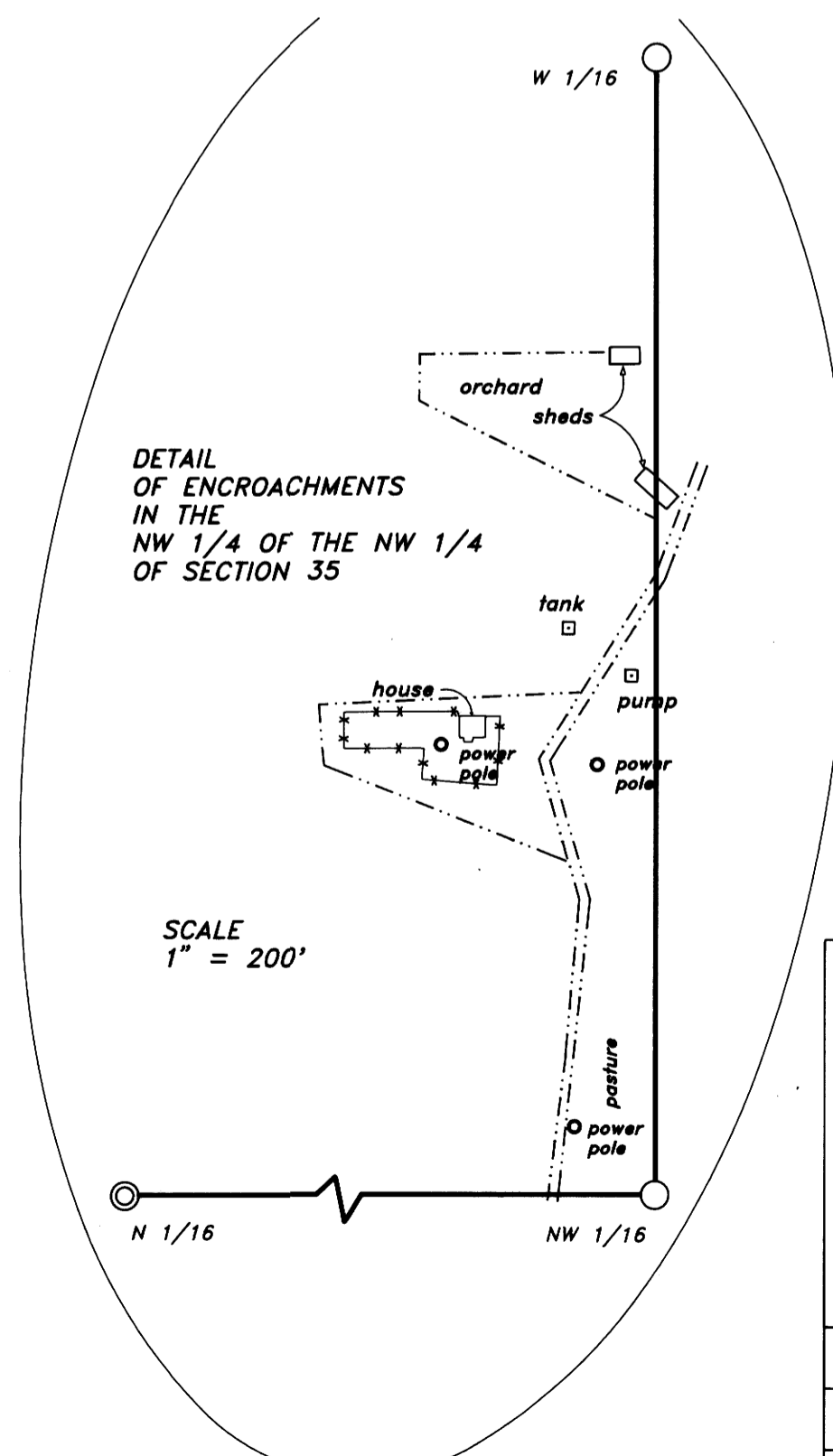
G.P.S. Sta. S-7
Lat: 43°46'59.49436"
Long: 123°59'20.25391"
N.A.D. 27 Lambert Grid
(South Zone)
Y= 790553.371
X= 1078851.785

- LEGEND:**
- IP - INTERNATIONAL PAPER Co.
 - PVT - OTHER PRIVATE LANDS
 - (.....) Information of Public Records
 - Line Object
 - ▨ Posted U.S.F.S. Property Line
 - ▨ Posted International Paper Property Line
 - Drainage
 - Ridge Line
 - ◇ Line Posts
 - ⊙ Found corner (see corner data)
 - Set monument (see corner data)

**REGISTERED
PROFESSIONAL
LAND SURVEYOR**

Harvey Wilcox

**OREGON
JULY 17, 1988
HARVEY WILCOX
2244**



**Stuntzner Engineering
& Forestry**

ENGINEERING - LAND SURVEYING - FORESTRY
PLANNING - WATER RIGHTS

705 South 4th,
Post Office Box 118
Coos Bay, Oregon 97420

DRAWN BY: A.A.	DATE: 12-15-90
CHECKED BY: H.W.	DRAWING NO.: 9092A35A
JOB NO.: 90-92	SHEET 3 OF 6

MAP FILE MILL-47.C

ESLICK CADASTRAL CONTRACT #53-04T0-0-2030S

FILED
 FEB 22 1991
 COUNTY SURVEYOR
 DOUGLAS COUNTY, ORE.
 P

MAP FILE M11L-472-D

CORNER NO.	MONUMENT	ACCESSORIES	CORNER NO.	MONUMENT	ACCESSORIES
1	Found 3" Aluminum Cap on a 2 1/2" Aluminum Pipe per CS M91-55	Found B.T.: 48" Fir, healed face, Tag, bears N44°W, 29.00' per CS M91-55 28" Fir, healed face, Tag, bears N54°E, 44.0' per CS M91-55 20" Alder, B.S., Tag, bears S01°E, 34.5' per CS M91-55 34" Fir, healed face, Tag, bears S70°W, 59.8' per CS M91-55	11	Set 3" Aluminum Cap on 2 1/2" X 30" Aluminum Pipe	Mkd. B.T.: 45" Western Red Cedar, F.S. "CE1/16 S35 BT", Tags & Washer, bears N67°30'W, 50.47' to SC 36" Western Red Cedar, F.S. "CE1/16 S35 BT", Tags & Washer, bears S3°E, 31.50' to SC
2	Found 3" Aluminum Cap in rock, per M91-54B	Found B.T.: 68" Douglas Fir, healed face & Tag, bears N18°E, 57.4' to SC per CS M91-54B 16" Douglas Fir, healed face & Tag, bears S22°W, 21.9' to SC per CS M91-54B	12	Set 3" Aluminum Cap on 2 1/2" X 30" Aluminum Pipe	Mkd. B.T.: 53" Maple (1 of 5), F.S. "SE1/16 S35 BT", Tags & Washer, bears N86°15'W, 46.29' to SC 22" Douglas Fir, F.S. "SE1/16 S35 BT", Tags & Washer, bears N61°E, 101.17' to SC
3	Found 3" Aluminum Cap on 2 1/2" Aluminum Pipe, per M91-54B	Found B.T.: 23" Douglas Fir, healed face & Tag, bears N35°W, 19.8' to SC per M91-54B 22" Douglas Fir, healed face & Tag, bears N5°E, 33.3' to SC per M91-54B 23" Douglas Fir, healed face & Tag, bears S01°E, 21.4' to SC per M91-54B	13	Set 3" Aluminum Cap on 2 1/2" X 30" Aluminum Pipe	Mkd. B.T.: 38" Douglas Fir, F.S. "T20S R11W S25 BT", Tags & Washer, bears N25°15'E, 39.45' to SC 16" Douglas Fir, F.S. "T20S R11W S36 BT", Tags & Washer, bears S76°30'E, 13.77' to SC 40" Douglas Fir, School Marm, F.S. "T20S R11W S26 BT", Tags and Washer, bears N20°30'W, 3.12' to SC Set R.M.: Std. U.S.F.S. Disk "RM T20S R11W S26 S83°11'E, 40.56' 1990 RLS2244, bears N83°11'W, 40.56'
4	Set 3" Aluminum Cap on 3/4" X 38" finned Aluminum Rod	Mkd. B.T.: 20" Maple, F.S. "W1/16 S35 BT", Tags, bears S10°45'E, 39.01' to SC 17" Maple, F.S. "W1/16 S26 BT", Tags, bears N61°30'E, 21.81' to SC, at West end of fence. Found: Iron Fence Post bears N50°W, 0.60'	14	Set 3" Aluminum Cap on 2 1/2" X 30" Aluminum Pipe	Mkd. B.T.: 44" Douglas Fir, F.S. "N1/16 S36 BT", Tags & Washer, bears N73°15'E, 59.13' to SC 19" Maple, F.S. "N1/16 S36 BT", Tags & Washer, bears N86°E, 21.80' to SC 25" Douglas Fir, F.S. "N 1/16 S35 BT", Tags & Washer, bears N87°30'W, 32.15' to SC
5	Set 3" Aluminum Cap on 3/4" X 38" finned Aluminum Rod in Pasture	Mkd. B.T.: 18" Douglas Fir, F.S. "NW1/16 S35 BT", Tags, bears N78 1/4°W, 198.51' to SC Mkd. B.O.: End of Wing Wall of Northwest Corner of Bridge over Eslick Creek, bears S13°15'W, 827.21'	15	Set 3" Aluminum Cap on 2 1/2" X 30" Aluminum Pipe	Mkd. B.T.: 22" Douglas Fir, F.S. "E1/4 S35 BT", Tags & Washer, bears N20°30'W, 61.00' to SC 31" Douglas Fir, F.S. "W1/4 S36 BT", Tags & Washer, bears N3°E, 21.25' to SC 31" Douglas Fir, F.S. "W 1/4 S36 BT" Tags & Washer, bears S45°E, 6.10' to SC Mkd. B.O.: 5' high Rock Face, with P.K. Nail and Washer in the center of an "X" and Tag, bears N58°W, 18.60'
6	Found 2 1/2" Brass Cap on 1 1/2" O.D. Iron Pipe, 12" high; along side 2" O.D. Iron Pipe, 14" high, per CS 41-119 & CS 53-66	Found B.T.: 20" Maple, healed face, bears N69°E, 74.8' (76' per CS 41-119) to SC 12" Maple, healed face, bears S38°W, 93.2' (96' per CS 41-119) to SC Mkd. B.T.: 13" Alder, B.S. "T20S R11W S1/4 S26 BT", Tags & Washer, bears N07°30'W, 14.10' to SC Mkd. B.O.: Rock, 2.65' high, 4.5' long, 2.4' wide, with "X" and tag, bears N78°E, 3.79'	16	Set 3" Aluminum Cap on 2 1/2" X 30" Aluminum Pipe	Mkd. B.T.: 15" Douglas Fir, F.S. "S1/16 S35 BT", Tags & Washer, bears N30°W, 31.68' to SC Set R.M.: Std. U.S.F.S. Disk, mkd. "RM S1/16 S35 S88°04'E, 53.26' 1990 RLS2244", bears N88°04'W, 53.26'
7	Set 3" Aluminum Cap on 2 1/2" X 30" Aluminum Pipe	Mkd. B.T.: 28" Douglas Fir, F.S. "CN1/16 S35 BT", Tags & Washer, bears N64°E, 27.64' to S.C. 22" Douglas Fir, F.S. "CN1/16 S35 BT", Tags & Washer, bears S61°45'E, 22.34' to S.C.	17	Found 2" Brass Cap on 2" Iron Pipe, per CS M84-62	Found B.T.: 10" Douglas Fir, with "X" at B.H., bears West, 12.2' to SC 12" Douglas Fir, with visible Scribe, bears N44°W, 12.9' to SC 17" Douglas Fir, with healed face, bears S49°E, 7.5' to SC 11" Douglas Fir, with healed face, bears S24°W, 3.4' to SC
8	Set 3" Aluminum Cap on 2 1/2" X 30" Aluminum Pipe	Mkd. B.T.: 25" Douglas Fir, F.S. "C1/4 S35 BT", Tags & Washer, bears N22°45'E, 90.63' to SC Mkd. B.O.: P.K. Nail with Washer in Rock Face & Tag, bears N42°30'W, 112.96' Power Pole #10-121 with Tag, bears N68°W, 113.88' Set R.M.: Std. U.S.F.S. Disk mkd. "RM C1/4 S35 S0°12'W, 63.18' 1990 RLS 2244", bears N0°12'E, 63.18'	18	Found 2" Brass Cap on Iron Pipe	Found B.T.: Original 52" Cedar, healed face, bears S87°W, 15.8' to SC 12" Hemlock, healed face, bears N70°W, 21.5' to SC 33" Cedar, healed face, bears S61°E, (S61°W per CS53-66) 32.7' to SC
9	Found Brass Cap with 3/4" Iron Pipe along side, per CS RM3-48	Found B.T.: 26" Cedar, healed face & Tag, bears N58°E, 34.5' to SC per CS 53-66 & REM #40 Original 61" Cedar, healed face & Tag, bears S10°W, 11.9' to SC	19	Set 3" Aluminum Rock Cap on Boulder	Mkd. B.T.: 17" Douglas Fir F.S. "BT", Tags & Washer, bears S65°30'W, 6.7' to SC 16" Douglas Fir F.S. "BT", Tags & Washer, bears S19°E, 21.7'
10	Set 3" Aluminum Cap on 2 1/2" Aluminum Pipe	Mkd. B.T.: 14" Douglas Fir, F.S. "E1/16 S35 BT", Tags & Washer, bears S20°30'E, 21.89' to SC 14" Douglas Fir, F.S. "E1/16 S26 BT", Tags & Washer, bears N52°45'W, 13.39' to SC			

SECTION 35 TOWNSHIP 20 SOUTH RANGE 11 WEST W. M.

ABBREVIATIONS:
 B.S. = BARK SCRIBE
 F&B = FRONT AND BACK
 F.S. = FACE SCRIBE
 B.T. = BEARING TREE
 B.O. = BEARING OBJECT
 R.M. = REFERENCE MONUMENT
 SC = SIDE, CENTER
 B.H. = BREAST HIGH
 MKD. = MARKED
 REM. = REMONUMENTATION RECORDS
 STD. U.S.F.S. DISK = 3" ALUMINUM CAP ON 2 1/2" X 30" ALUMINUM PIPE

REGISTERED PROFESSIONAL LAND SURVEYOR
Harvey Wilcox
OREGON
 JULY 17, 1988
HARVEY WILCOX
 2244

Stuntzner Engineering & Forestry
 ENGINEERING - LAND SURVEYING - FORESTRY
 PLANNING - WATER RIGHTS
 705 South 4th, Post Office Box 118, Coos Bay, Oregon 97420
 503-287-2872
 503-287-0668 FAX
 DRAWN BY: A.A. DATE: 12-15-90
 CHECKED BY: H.W. DRAWING NO.: 9092A35B
 JOB NO.: 90-92 SHEET 4 OF 6

**COUNTY SURVEYORS FILE DATA
DO NOT REMOVE FROM OFFICE**

MAP FILE M11L-472-D

RECORD OF SURVEY for UNITED STATES FOREST SERVICE

located in
**SECTION 36, TOWNSHIP 20 SOUTH
RANGE 11 WEST, W. M. DOUGLAS COUNTY
OREGON**

**ESLICK CADASTRAL
CONTRACT #53-04T0-0-2030S**

See SEF Field Book "ESLICK"

NARRATIVE SECTION 36:

This survey involved Sections 26, 35 and 36, Township 20 South, Range 11 West, W.M., Douglas County, Oregon.

The original survey of the South and East lines of Section 36 was performed by John Meldrum, under contract dated December 12, 1866. The West Line was performed by William Thiel, under contract dated October 16, 1891. The North line was performed by William Thiel, under contract dated February 16, 1891. See my Section 26 NARRATIVE, page 1 of 6, for the NW Corner of Section 36. See my Section 35 NARRATIVE, page 3 of 6, for monuments found and set on the West Line of Section 36. I found the original N 1/4 Corner as remonumented by the County (CS53-66). I found the original Northeast Corner as remonumented by T. McCullough (CS55-142). I found and accepted the E 1/4 Corner as proportioned by Frank Pumphrey (M85-37). I found and accepted the original Southeast Corner as perpetuated by F. Cain (REM. #21) and remonumented by the County (CS53-66). I found and accepted the S 1/4 as proportioned by Ronald Stuntzner (M84-62). These corners gave me the control to subdivide Section 36 per the 1973 B.L.M. Manual of Surveying Instructions.

The Basis of Bearing of this survey was a solar observation.

GPS 201032
LAT.=43°47'34.07014"
LONG.=123°55'28.47195"
NAD 27 Lambert Grid (South Zone)
Y = 793,349.669
X = 1,095,983.841

NOTES:

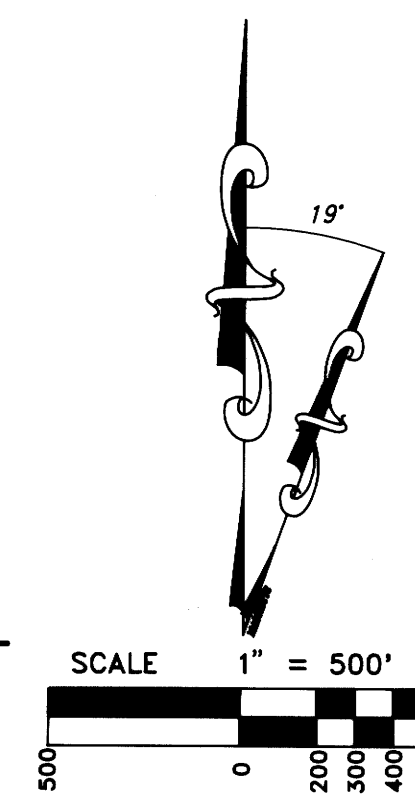
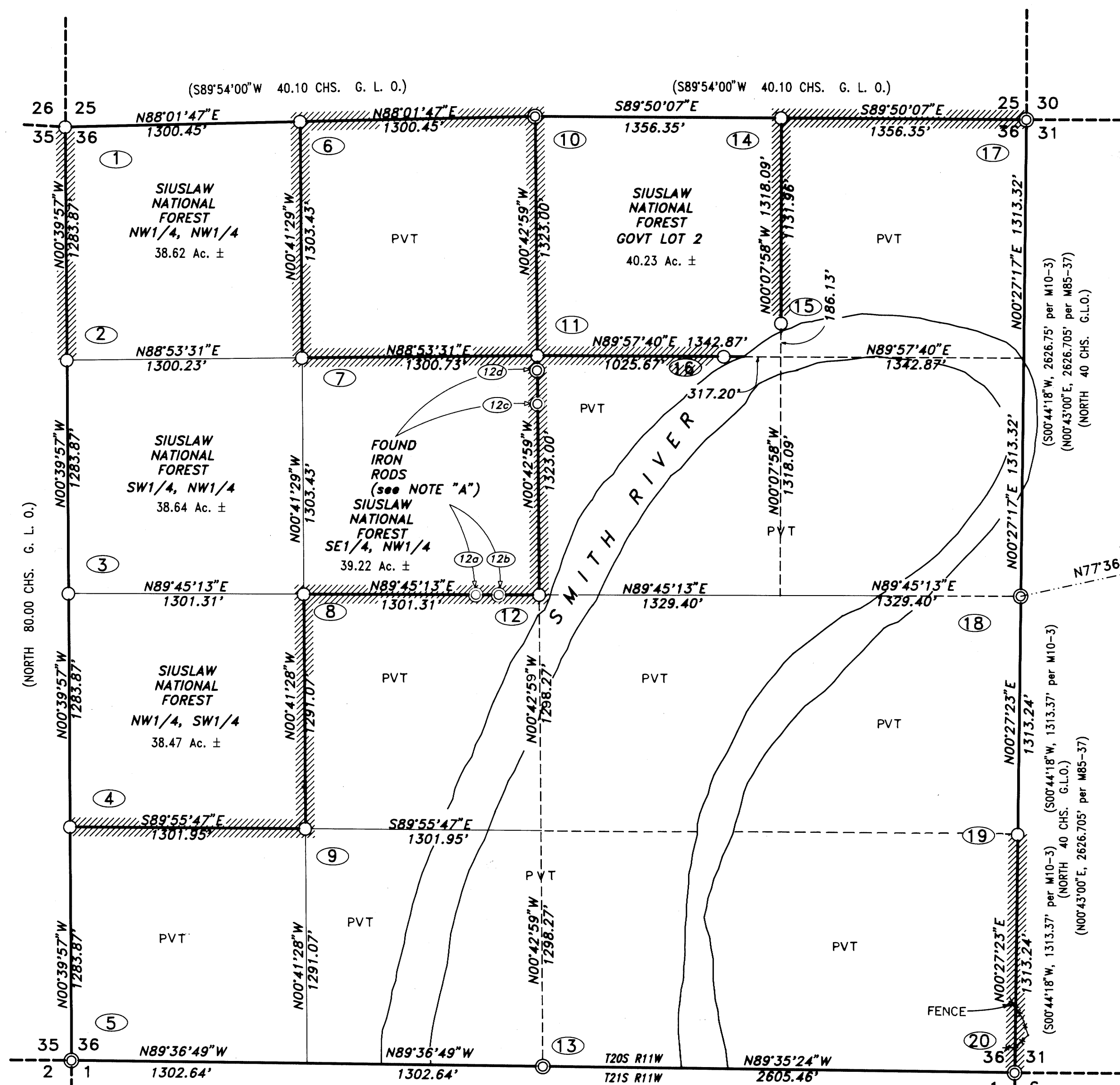
Bearings to existing Bearing Trees (BT) were taken with Staff Compass (Decl. = 19') to the Center of the tree and distances were measured to Side Center (SC). Bearings to new Bearing Trees (BTs) were taken with theodolite to the BT scribe and distance was measured with Electronic Distance Measuring (EDM) to a nail in Side Center (SC)

NOTE "A":

Found Stuntzner Engineering Iron Rods, as shown on M93-30 and controlling properties outside of National Forest Lands:

bearings and distances from the C 1/4 Corner:

- I.R. 12a bears N87°50'40"W, 348.29' (14.60 N. of line)
- I.R. 12b bears N86°38'02"W, 222.99' (14.05 N. of line)
- I.R. 12c bears N00°43'30"W, 1061.91' (0.16 W. of line)
- I.R. 12d bears N00°43'25"W, 1262.37' (0.16 W. of line)



(EAST 40.00 CHS. G. L. O. S89°36'25"E, 2605.02' per M84-62) (EAST 40.00 CHS. G. L. O./S89°36'25"E 2605.03' per M84-62)

- LEGEND:**
- ⊙ Found corner (see corner data)
 - Set monument (see corner data)
 - (.....) Information of Public Records
 - PVT OTHER PRIVATE LANDS
 - ▨ Posted U.S.F.S. Property Line
 - ▨▨▨ Posted International Paper Property Line
 - △ Global Positioning Control Point (GPS)

**REGISTERED
PROFESSIONAL
LAND SURVEYOR**
Harvey Wilcox
**OREGON
HARVEY WILCOX
2244**

**COUNTY SURVEYORS FILE DATA
DO NOT REMOVE FROM OFFICE**

Stuntzner Engineering & Forestry
ENGINEERING - LAND SURVEYING - FORESTRY
PLANNING - WATER RIGHTS
705 South 4th, Post Office Box 118, Coos Bay, Oregon 97420
503-267-2872
503-267-0588 FAX

DRAWN BY: A.A.	DATE: 12-15-90
CHECKED BY: H.W.	DRAWING NO.: 9092A36A
JOB NO.: 90-92	SHEET 5 OF 6

MAP FILE MILL-475

MAP FILE MILL-475

**COUNTY SURVEYORS FILE DATA
DO NOT REMOVE FROM OFFICE**

FILED
FEB 11 1991
COUNTY SURVEYOR
DOUGLAS COUNTY, ORE.
J.P.

ESLICK CADASTRAL CONTRACT #53-04T0-0-2030S

CORNER NO.	MONUMENT	ACCESSORIES	CORNER NO.	MONUMENT	ACCESSORIES
1	Set 3" Aluminum Cap on 2 1/2" X 30" Aluminum Pipe	Mkd. B.T.: 38" Douglas Fir, F.S. "T20S R11W S25 BT", Tags & Washer bears N25°15'E, 39.45' to SC 16" Douglas Fir, F.S. "T20S R11W S36 BT", Tags & Washer bears S76°30'E, 13.77' to SC 40" Douglas Fir, School Warm, F.S. "T20S R11W S26 BT", Tags & Washer, bears N20°30'W, 3.12' to SC Set R.M.: Std. U.S.F.S. Disk "RM T20S R11W S26 S83°11'E, 40.56' 1990 RLS2244", bears N83°11'W, 40.56'	11	Set 3" Aluminum Cap on 2 1/2" X 30" Aluminum Pipe over 5/8" Iron Rod driven into Bed Rock, in stone mound in small creek	Mkd. B.T.: 9" Alder B.S. "CN1/16 S36 BT", Tags & Washer, bears N39°W, 22.80' to SC Mkd. B.O.: Rock Face with P.K. Nail & Washer in center of "X" and Tag, bears S61°W, 77.37' Found B.O.: 5/8" Iron Rod with plastic cap mkd. "STUNTZNER ENGR." bears S00°30'E, 60.63'
2	Set 3" Aluminum Cap on 2 1/2" X 30" Aluminum Pipe	Mkd. B.T.: 44" Douglas Fir, F.S. "N1/16 S36 BT", Tags & Washer, bears N73°15'E, 59.13' to SC 19" Maple, F.S. "N1/16 S36 BT", Tags & Washer, bears N86°E, 21.80' to SC 25" Douglas Fir, F.S. "N 1/16 S35 BT", Tags & Washer, bears N87°30'W, 32.15' to SC	12	Set 3" Aluminum Cap on 2 1/2" X 30" Aluminum Pipe	Mkd. B.T.: 27" Douglas Fir, F.S. "C1/4 S36 BT", Tags & Washer, bears N60°15'W, 26.13' to SC 7" Douglas Fir, F.S. "C1/4 S36 BT", Tags & Washer, bears S24°15'W, 5.85' to SC 46" Cedar, F.S. "C1/4 S36 BT", Tags & Washer, bears N87°30'E, 90.57' to SC Set R.M.: Std. U.S.F.S. Disk: "RM C1/4 S36 S89°52'W, 73.15' 1990 RLS2244", bears N89°52'E, 73.15'
3	Set 3" Aluminum Cap on 2 1/2" X 30" Aluminum Pipe	Mkd. B.T.: 22" Douglas Fir, F.S. "E1/4 S35 BT", Tags & Washer, bears N20°30'W, 61.00' to SC 31" Douglas Fir, F.S. "W1/4 S36 BT", Tags & Washer, bears N3°E, 21.25' to SC 31" Douglas Fir, F.S. "W1/4 S36 BT", Tags & Washer, bears S45°E, 6.10' to SC Mkd. B.O.: 5' high Rock Face with a P.K. Nail and Washer in the center of an "X" and Tag, bears N58°W, 18.60'	13	Found 2" Brass Cap on Iron Pipe per M84-62	Found B.T.: 45" Maple, visible scribe & F&B Tags, bears N65°W, 14.7' to SC per M84-62 26" Douglas Fir, healed face, F&B Tags, bears S52°E, 18.3' to SC per M84-62
4	Set 3" Aluminum Cap on 2 1/2" X 30" Aluminum Pipe	Mkd. B.T.: 15" Douglas Fir, F.S. "S1/16 S35 BT", Tags & Washer, bears N30°W, 31.68' to SC Set R.M.: Std. U.S.F.S. Disk "RM S1/16 S35 S88°04'E, 53.26' 1990 RLS2244", bears N88°04'W, 53.26'	14	Set 3" Aluminum Cap on 2 1/2" X 30" Aluminum Pipe NOTE: This corner is located in the center of a draw.	Mkd. B.T.: 22" Alder, B.S. "E1/16 S25 BT", Tags & Washer, bears N41°E, 37.52' to SC 29" Cedar, FS "E1/16 S36 BT", Tags & Washer, bears S36 1/2'E, 57.95' to SC
5	Found 2" Brass Cap on 2" Iron Pipe per CS M84-62	Found B.T.: 10" Douglas Fir, with "X" at B.H., bears West, 12.2' to SC 12" Douglas Fir, with visible Scribe, bears N44°W, 12.9' to SC 17" Douglas Fir, with healed face, bears S49°E, 7.5' to SC 11" Douglas Fir, with healed face, bears S24°W, 3.4' to SC	15	Set 3" Aluminum Cap on 2 1/2" X 30" Aluminum Pipe NOTE: This monument is located 5' South of the edge of the Smith River Road (on the river side)	Mkd. B.T.: 48" Maple, F.S. "WP BT", Tags & Washer, bears N54 3/4'W, 87.96' to SC Mkd. B.O.: Rock Face, with P.K. Nail and Washer in the center of "X", Tag, bears N07 1/2'E, 48.47'
6	Set 3" Aluminum Cap on 2 1/2" X 30" Aluminum Pipe	Mkd. B.T.: 20" Douglas Fir, F.S. "W1/16 S25 BT", Tags & Washer, bears N21°W, 21.67' to SC 61" Douglas Fir w/ Open Face bears N46°W, 12.77' to SC 34" Hemlock F.S. "W1/16 S25 BT" Tags & Washer, bears N81°30'W, 15.14' to SC	16	Set 3" Aluminum Cap on 2 1/2" X 30" Aluminum Pipe NOTE: This monument is located 4' South of the edge of Smith River Road (on the river side)	Mkd. B.O.: Rock Face, with P.K. Nail and Washer in the center of "X", Tag, bears N31°15'E, 102.72' Rock Face, with P.K. Nail and Washer in the center of "X", Tag, bears S88°30'W, 69.43'
7	Set 3" Aluminum Cap on 2 1/2" X 30" Aluminum Pipe	Mkd. B.T.: 39" Maple, F.S. "NW1/16 S36 BT", Tags & Washer, bears N6°E, 10.25' to SC Set R.M.: Std. U.S.F.S. Disk: "RM NW1/16 S36 N89°10'W, 38.20' 1990 RLS2244", bears S89°10'E, 38.20'	17	Found 2 1/2" Brass Cap on 2 1/4" Iron Pipe, 14" high, with a 1" Iron Pipe 24" high along side per CS 55-142	Found B.T.: Original 32" Maple, rotten face, Tags, bears N29°W, 25.3' to SC 17" Cedar, healed face, Tags, bears N20°W, 47.3' to SC per CS 55-142 76" Spruce, visible scribe, Tags, bears S72 3/4'E, 74.3' to SC per CS M102-12 Cascara, dead, Tags, bears S72°E, 27.6' 65" Douglas Fir, visible scribe, Tags, bears S18°W, 70.3' per CS M10-3 & REM 10 Set R.M.: Std. U.S.F.S. Disk: "RM T20S R10W S30 S88°20'W, 43.40' 1990 RLS2244", bears N88°20'E, 43.40'
8	Set 3" Aluminum Cap on 2 1/2" X 30" Aluminum Pipe	Mkd. B.T.: 23" Douglas Fir, F.S., "CW1/16 S36 BT", Tags & Washer, bears N86°30'E, 67.90' to SC Mkd. B.O.: Rock Face with P.K. Nail in the center of an "X", Tag, bears N5°15'W, 12.54'	18	Found 2" Aluminum Cap on a 5/8" Iron Rod, 4" below the surface, located in a field, per CS M85-37	Found B.O.: Fence Post with Nail in Top & Tag, bears S33°E, 36.2' per CS M85-37
9	Set 3" Aluminum Cap on 2 1/2" X 30" Aluminum Pipe	Mkd. B.T.: 11" Douglas Fir, F.S. "SW1/16 S36 BT", Tags & Washer, bears N55°45'W, 22.67' to SC 12" Douglas Fir, F.S. "SW1/16 S36 BT", Tags & Washer, bears N5°15'W, 24.68' to SC	19	Set 3" Aluminum Cap on 2 1/2" X 30" Aluminum Pipe NOTE: This monument is located at the top of a cut bank of old dirt road	Mkd. B.T.: 31" Douglas Fir, F.S. "S1/16 S36 BT", Tags & Washer, bears N83 3/4'W, 44.55' to SC 20" Douglas Fir, F.S. "S1/16 S31 BT", Tags & Washer, bears S03 1/2'E, 27.31' to SC
10	Found 2" Brass Cap on Iron Pipe per CS 53-66	Found B.T.: 52" Cedar, healed face, bears S87°W, 15.8' to SC 12" Hemlock, healed face, bears N70°W, 21.5' to SC 33" Cedar, healed face, bears S61°E (S61°W per CS 53-66), 32.7' to SC	20	Found 2 1/2" Brass Cap on a 1 1/4" Iron Pipe 12" high, with a 1" Iron Pipe 24" high along side. Per REM #48 & REM #21	Found B.T.: 30" Maple, S.E. trunk of tree with healed face, tags, bears N14°W, 15.2' to SC per REM #21 21" Douglas Fir, healed face, Tags, bears N80°E, 83.6' to SC per REM #48 37" Douglas Fir, healed face, Tags, bears S77 1/4'E, 42.9' to SC per REM #21 39" Maple, healed face, Tags, bears S27°W, 11.2' to SC per REM #21. NOTE: this tree trunk has blown down. I retagged another trunk of the same tree, it bears S25 1/2'W, 14.20' to SC Set R.M.: Std. U.S.F.S. Disk "RM T20S R10W S31 S88°09'W, 52.91 1990 RLS2244", bears N88°09'E, 52.91'

**SECTION 36
TOWNSHIP 20 SOUTH
RANGE 11 WEST
W. M.**

- ABBREVIATIONS:**
- B.S. = BARK SCRIBE
 - F&B = FRONT AND BACK
 - F.S. = FACE SCRIBE
 - B.T. = BEARING TREE
 - B.O. = BEARING OBJECT
 - R.M. = REFERENCE MONUMENT
 - SC = SIDE, CENTER
 - B.H. = BREAST HIGH
 - MKD. = MARKED
 - GLV. = GALVANIZED
 - REM. = REMONUMENTATION RECORDS
 - STD. U.S.F.S. DISK = 3" ALUMINUM CAP ON 2 1/2" X 30" ALUMINUM PIPE

REGISTERED PROFESSIONAL LAND SURVEYOR

Harvey Wilcox

OREGON
JULY 17, 1989
HARVEY WILCOX
2244

Stuntzner Engineering & Forestry

ENGINEERING - LAND SURVEYING - FORESTRY
PLANNING - WATER RIGHTS

705 South 4th, Post Office Box 118, Coos Bay, Oregon 97420
503-287-2872
503-287-0668 FAX

DRAWN BY: A.A.	DATE: 12-15-90
CHECKED BY: H.W.	DRAWING NO.: 9092A36B
JOB NO.: 90-92	SHEET 6 of 6

MAP FILE M111-47-E