

COUNTY SURVEYORS FILE DATA
DO NOT REMOVE FROM OFFICE

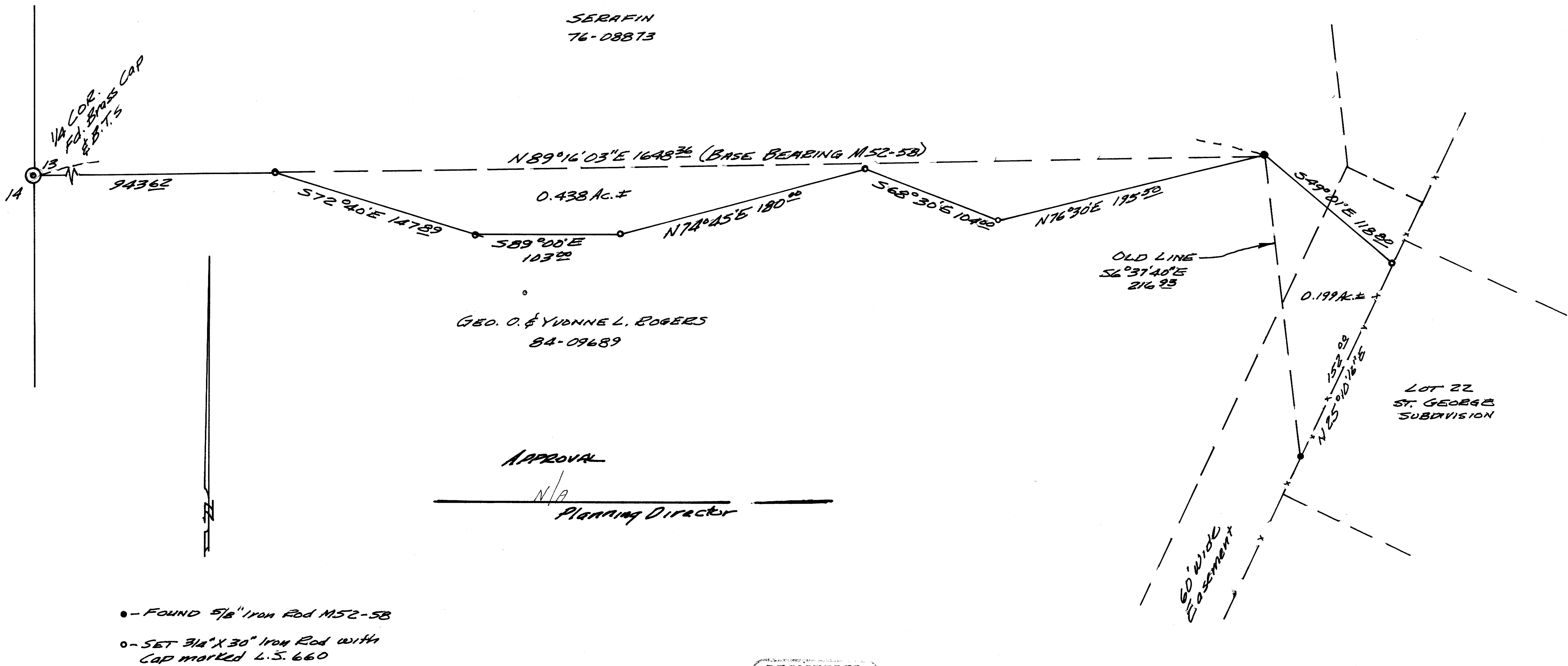
BOUNDARY LINE ADJUSTMENT SURVEY
IN THE WEST 1/2 OF SECTION 13,
T. 27 S., R. 5 W., W.M.
FOR PETER B. SERAFIN
BY BRUCE ROGERS
200 N.E. PATTERSON
ROSEBURG, OREGON
OCT. 1990 1"=50'

FILED

JAN 24 1991 JP

COUNTY SURVEYOR
DOUGLAS COUNTY, ORE.
JP

MAP FILE M.111-35



REGISTERED
OREGON
LAND SURVEYOR

Bruce R. Rogers

JULY 10, 1964
BRUCE R. ROGERS
660

MAP FILE M.111-35