

**COUNTY SURVEYORS FILE DATA
DO NOT REMOVE FROM OFFICE**

FILED
JAN 17 1991
COUNTY SURVEYOR
DOUGLAS COUNTY (ORE.)

LONE ROCK TIMBER CO.

P.O. BOX 1127 ROSEBURG, OR.

SECTION 26, TOWNSHIP 23 SOUTH, RANGE 4 WEST, W.M.

DOUGLAS COUNTY, OREGON

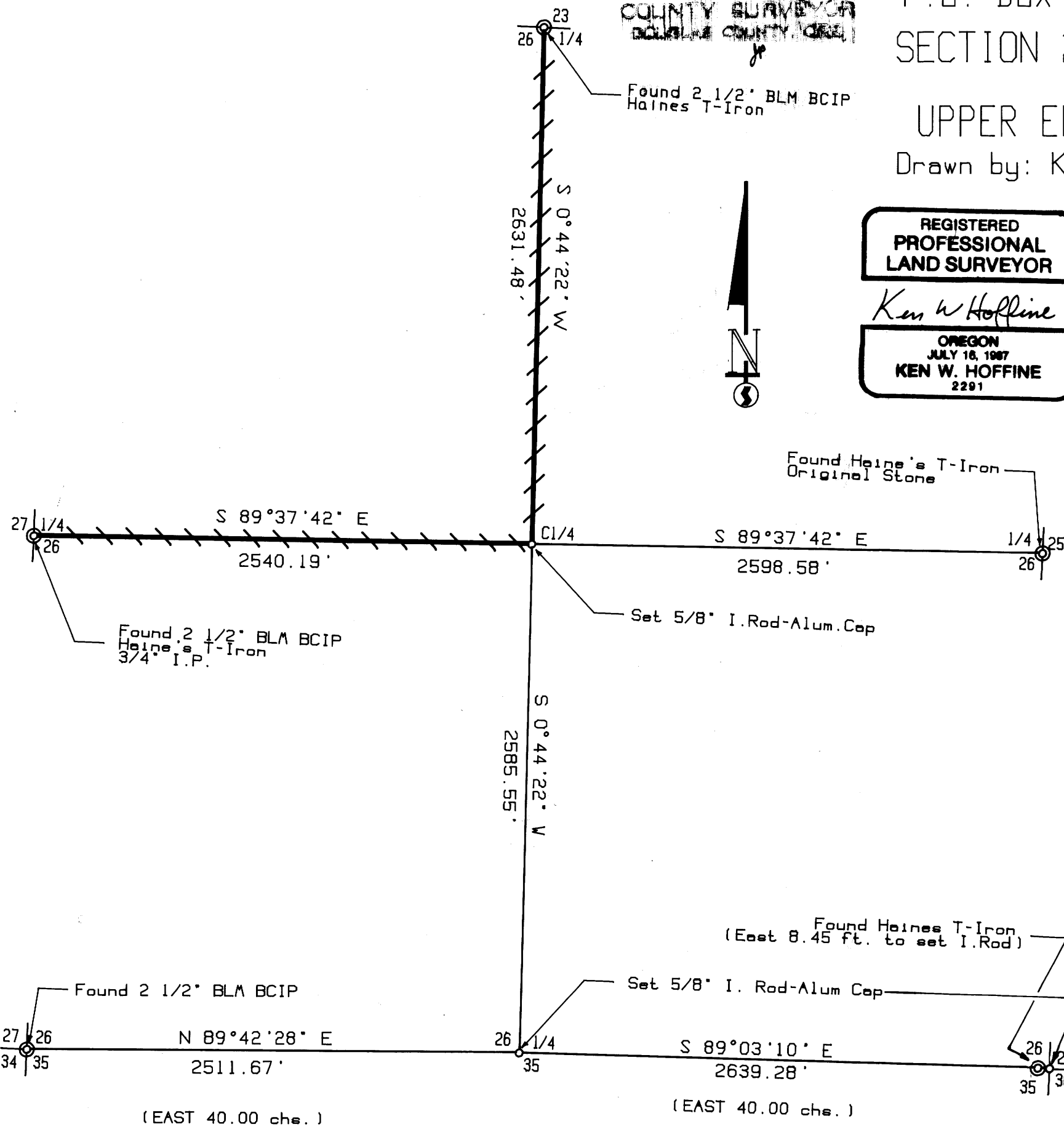
UPPER ELKHEAD SURVEY J23-4-26 TRACT

Drawn by: Ken Hoffine-Bill Warren

SCALE: 1" = 600 ft.

DATE: JAN. 1991

S. File No. 63/106
MAP FILE M111-30



**REGISTERED
PROFESSIONAL
LAND SURVEYOR**

Ken W Hoffine
**OREGON
JULY 18, 1987
KEN W. HOFFINE
2291**

NARRATIVE:

- 1) This map is a correction for map #109-56 for an error in rotation of Traverse of 2° 05' 50" left of true.
- 2) The basis of bearing being solar observation.
- 3) The purpose of this survey was to establish and mark boundaries as shown hereon.
- 4) The instruments used in this survey were a Lietz set 2 Total Station, and an IBM compatible AT, w/Generic Cadd and Traverse PC software.
- 5) Assisting personnel was Gary Angiolet.
- 6) Deed record pertaining to this survey is # 89-18044 filed with Douglas County Clerk.
- 7) Relative error of closure of Survey is greater than 1:24,000 adjusted by compass rule.
- 8) Written notes including corner notes and background information are filed in Douglas County Survey Records Book CS 63/106 Page _____

LEGEND:

- ⊙ - Found Monument size and type noted.
- - Set 5/8" x 36" I. Rod w/ 2" Alum. cap set approx. 0.5 ft above ground.
- ▲ - Calculated corner positions.
- - Lines marked
- - Projected lines.

S. File No. 63/106
MAP FILE M111-30

M109-56 E
M 111-30

page1/4

Lone Rock Timber Company
PO BOX 1127 Roseburg, OR

Upper Elkhead Survey
Section 26, T23S, R4W, W.M.
Douglas County, Oregon

General Information:

This survey was conducted to establish property corners and property lines for timber cutting purposes. Equipment used was a Lietz Set 2 Total Station and an IBM compatible AT computer. The survey was initiated at the east 1/4 of Section 26. Proper and legal survey methods were used to tie into the W 1/4, N 1/4, SW section corner, and SE section corner to establish the S 1/4 and center 1/4 of Section 26. Closed traverses were run for the subdivision with closures greater than 1:24,000. Bearings are based on solar observation.

Corner Information:

The following is a record of all corners found or set during the course of the survey.

East 1/4 corner:

Found: Wilford Haines (#LS239) 3/4" T-iron with identification button on top of bar adjacent to original 1884 12" by 18" buried stone with faint markings on west face and the following accessories:

- Original 12" yew bears S 37° W, 10 ft. This is a 10 foot tall burned decayed snag, no visible scribe.
- Original 50" DF bears N 44° E, 11 ft. Heavily decayed 4' tall snag, no visible scribe.
- 20" cedar stump, bears S57° E, 22.7 ft. Well healed scar cut through with Weyco tag and "W" spike.
- 16" Doug fir stump bears N 60° W, 56.0 feet. Very low cut stump with no evidence remaining.
- 10 Hem bears S 27° W, 11.3 ft. I tagged this tree.

#184
+
Corner lies on a steep west facing slope, 30 ft. north of creek which flows northwest and approximately 100 ft. east of end of old logging road.

FILED

zh
FEB 6 1990

COUNTY SURVEYOR
DOUGLAS COUNTY, ORE.

C.S. File No. 63/106-1

West 1/4 corner:

Found: 1976 2 1/2" BLM brass cap with Wilford Haines (LS#239) 3/4" T-iron and identification button on top of bar and a 3/4" iron pipe and the following accessories:

- Original 24" Doug-fir, now a 42" bears N 85° W, 28.0 ft. Scribe marks on bark blaze, nearly grown over open blaze visible.
- Original 40" Doug-fir badly decayed and burned remains and stump hole bears S 45° E, 2.0 ft.
- 27" incense cedar bears S 50° E, 26.5 ft. Well healed face and BLM tag.
- 10" incense cedar bears N 55° W, 40.4 ft. visible scribing and BLM tag.
- 12" incense cedar bears N 68° W, 23.1 ft. visible scribing and BLM tag.

Corner lies on south facing ridge approximately 70 ft. below a wide flat bench and approximately 1150 south of BLM gravel road.

North 1/4 corner:

Found: 1982 2 1/2" BLM brass cap with Wilford Haines (LS#239) 3/4" T-iron and identification button on top of bar and the following accessories:

- 11" Doug-fir bears S 60° W, 9.8 ft. Well healed face and BLM tag.
- 14" Doug-fir bears N 34° E, 6.4 ft. Well healed face and BLM tag.

Corner lies on 35% south slope approximately 150 ft. east of broad heavily timbered flat bench.

South West Section Corner:

Found: 1976 2 1/2" BLM brass cap and the following accessories:

- 6" grand fir bears N 71° W, 4.8 ft. Well healed face and BLM tag.
- 10" Doug- fir bears N 58° E, 8.5 ft. Well healed face and BLM tag.

FILED

sh

FEB 6 1990

COUNTY SURVEYOR
DOUGLAS COUNTY, ORE.

- 9" Doug-fir bears S 77° E, 39.8 ft. Well healed face and BLM tag.
- 7" Doug-fir bears S 34¼° W, 18.5 ft. Well healed face and BLM tag.

Corner lies on .3 ft. above ground on flat bench north of steep north facing slope and 1.6 chains south of very old logging skid road.

South East section corner

Set: 5/8" by 36" iron rod with alum cap 0.7 ft. above ground. Found 4x4" old burned, decayed cedar post lying next to point. Wilford Haines (LS#239) 3/4" T-Iron and identification button on top of bar bears west 8.45 feet. I find the following accessories:

- Original 6" Doug-fir is now badly decayed, 20" root remains, bears S 40° E, 76.1 ft.
- Original 36" Doug-fir is now badly decayed, 40" root remains, bears N 19° E, 104.5 ft.
- Original 48" Doug-fir is now badly decayed 50" 3 ft. tall snag remains, no marks visible, bears S 75° W, 115.1 ft.
- Original 36" Doug-fir is a burned decayed 34" IC stump, no marks visible, bears N 5° W, 222.5 ft.
- 10" hemlock bears N 64° W, 46.0 ft. Weyco tag and "W" nail in base, I scribe S 26 BT and tag.
- 21" Doug-fir high stump bears N 52° E, 15.0 ft. Well healed scribe and old BT tag.
- 29" Doug-fir bears N 19° W, 64.0 ft. to aluminum nail in mid-base. I drive a 6" iron spike into well healed face and tag tree.
- 10" hemlock bears S 65° W, 52.3 ft. Weyco tag and "W" nail, I scribe S 35 BT and tag tree.
- 25" WRC bears S 62° E 61.3 ft. to aluminum nail at DBH. I drive 6" spike in face and scribe S 36 BT and tag tree.

Corner lies on the edge of large bench, steep to the South with timber to the Southeast only.

South 1/4

Set: 5/8" by 36" iron rod with aluminum cap 0.5 ft. above ground and mark the following accessories:

FILED

JL

FEB 6 1990

COUNTY SURVEYOR
DOUGLAS COUNTY, ORE.

- Original 36" Doug-fir is a burned and decayed 16 foot tall 36" snag with burned out face. Bears N 65° W, 39.6 ft.
- 11.5" Doug-fir bears S 19° E, 4.57 to aluminum nail in mid-base. I scribe 1/4 S35 BT, drive a 6" spike in face and tag tree.
- 14" Doug-fir bears N 38° E, 20.15 ft. to aluminum nail in mid-base. I scribe 1/4 S36 BT, drive a 6" iron spike in face and tag tree.
- 8" Doug-fir bears S 55° W, 32.87 ft. to aluminum nail breast height. I scribe 1/4 S35 BT, drive 6" spike in face, and tag tree.

The corner lies on a steep West facing side slope $\frac{1}{2}$ chain West of bottom of rock bluff and 2.0 chains below top of rock bluff as described in original notes. A loose $\frac{3}{4}$ " iron pipe $\frac{1}{2}$ foot in ground with no accessories bears S 74° E, 42.1 ft. Access to corner is 300 ft. South of end of landing on logging spur road.

Center 1/4

Set: 5/8" by 36" iron rod with aluminum cap 0.5 ft. above ground and mark the following accessories:

- 8" hemlock bears N 11° E, 47.8 ft. to aluminum nail in mid-base. I scribe C 1/4 S 26 BT, drive 6" spike in face and tag tree.
- 26" Doug-fir bears N 50° W, 19.2 ft. to head of 6" spike. I drive in fact. I scribe C 1/4 S 26 BT and tag tree.
- 32" Doug-fir stump bears S 39° W, 20.6 ft. to head of 6" spike in chopped face. I also tag stump.
- 16" WRC stump bears South 11.1 ft. to head of 6" spike. I drive in face. I scribe C 1/4 S 26 BT and tag.

Corner lies on 20% east facing slope approximately 500 ft. east of gravel road with timber to NW quadrant only.



Respectfully Submitted,

Ken Hoffine
Ken Hoffine, O.R.L.S.#2291

FILED

zh
FEB 6 1990

COUNTY SURVEYOR
DOUGLAS COUNTY, ORE.