

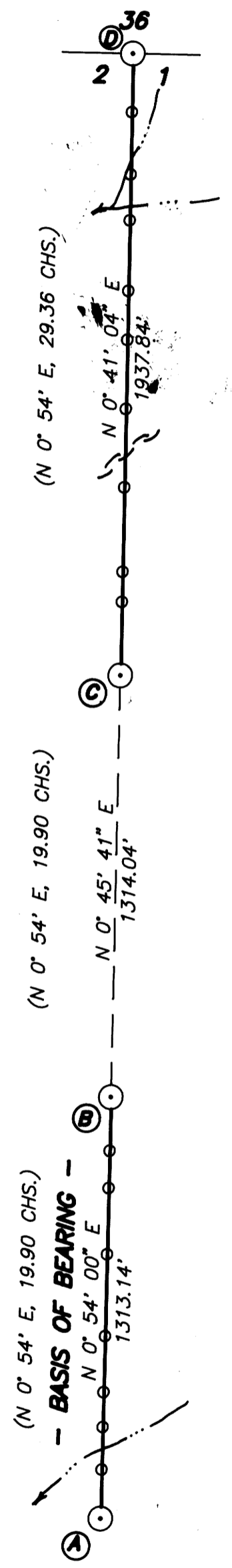


**(D) SECTION CORNER 1 AND 2 ONLY**  
 FOUND: U.S. B.L.M. BRASS CAP - "1954"  
 56" FIR, S 78° E 36.7'  
 82" FIR, S 10 1/2° W 101.9'

**(C) NORTH 1/16 (80) CORNER 1 AND 2**  
 FOUND: U.S. B.L.M. BRASS CAP - "1967"  
 56" FIR, N 86° E, 34.7'  
 30" FIR, S 76° W, 16.6'

**(B) NORTH 1/16 CORNER 1 AND 2**  
 FOUND: U.S. B.L.M. BRASS CAP - "1967"  
 SET: 20" FIR, S 63° E, 33.4' - SCRIBED N 1/16 S1BT  
 24" FIR, N 74 1/2° W, 73.3' - SCRIBED N 1/16 S2BT  
 NOTE: 1967 BT'S DOWN

**(A) 1/4 CORNER 1 AND 2**  
 FOUND: U.S. B.L.M. BRASS CAP - "1967"  
 12" FIR SNAG, S 78° E, 5.9' ORIGINAL  
 15" FIR SNAG, S 65° W, 7.0' ORIGINAL  
 SET: 37" FIR, S 13° E, 30.4' - SCRIBED 1/4 S1BT  
 14" FIR, S 89 1/2° W, 17.5' - SCRIBED 1/4 S2BT







**- NARRATIVE -**

THIS SURVEY WAS MADE IN JULY AND OCTOBER, 1990 BY DANIEL W. BAKER OF PEEL BAKER LAND SURVEYING, INC. THE PURPOSE OF THIS SURVEY WAS TO LOCATE AND MARK IN THE FIELD THE EAST LINE OF SECTION 2, T21S, R9W, M.W., FROM THE EAST 1/4 CORNER TO THE NORTH 1/16 CORNER AND FROM THE NORTH 80 CORNER TO THE NORTHEAST SECTION CORNER FOR INTERNATIONAL PAPER COMPANY. A KERN K1M THEODOLITE AND DM 502 EDM WERE USED TO PERFORM THIS SURVEY AND BEARINGS WERE BASED ON THE 1967 BLM SURVEY BETWEEN THE EAST 1/4 CORNER AND THE NORTH 1/16 CORNER. CLOSED TRANSIT TRAVERSES, WITH A MINIMUM ERROR OF CLOSURE OF 1'/10,000' WERE RUN BETWEEN FOUND MONUMENTS AND ALSO ALONG THE LINES TO BE MARKED. OFFSETS WERE CALCULATED FROM THESE TRAVERSE POINTS AND USED TO DETERMINE THE POSITION OF THE TRUE PROPERTY LINE. THE TRUE PROPERTY LINE WAS MARKED IN THE FIELD BY BLAZING TREES (BLAZES PAINTED RED) ON EITHER SIDE OF TRUE LINE AND BY SETTING 6 FOOT ALUMINUM POSTS AT RANDOM INTERVALS ALONG THE TRUE PROPERTY LINE. EACH POST HAD AN "INTERNATIONAL PAPER COMPANY" DECAL ATTACHED, MARKED WITH THE DISTANCE AND DIRECTION TO THE NEAREST CORNER AND AN ORANGE MAGNETIC LOCATOR WAS BURIED ALONGSIDE EACH POST. NO CORNERS WERE SET IN THIS SURVEY.

**BASIS OF BEARING:** EAST LINE OF SECTION FROM EAST 1/4 CORNER TO NORTH 1/16 CORNER AS PER 1967 B.L.M. SURVEY

**SCALE:** 1" = 400'

-  CORNERS FOUND
-  BLAZED PROPERTY LINE
-  6 FOOT ALUMINUM POSTS
-  RECORD DATA

REGISTERED  
 PROFESSIONAL  
 LAND SURVEYOR

*Daniel W. Baker*  
 OREGON  
 JULY 16, 1992  
 DANIEL W. BAKER  
 1978

**COUNTY SURVEYORS FILE DATA  
 DO NOT REMOVE FROM OFFICE**

<b>SURVEY IN</b> <b>EAST LINE OF SECTION 2, T21S, R9W, W.M.</b> <b>DOUGLAS COUNTY, OREGON</b>	
CLIENT: <b>INTERNATIONAL PAPER COMPANY</b>	
<b>PEEL BAKER LAND SURVEYING, INC.</b> 1385 OAK STREET, SUITE 3, EUGENE, OREGON (503) 343-7243	
DATE: 12/13/90	