

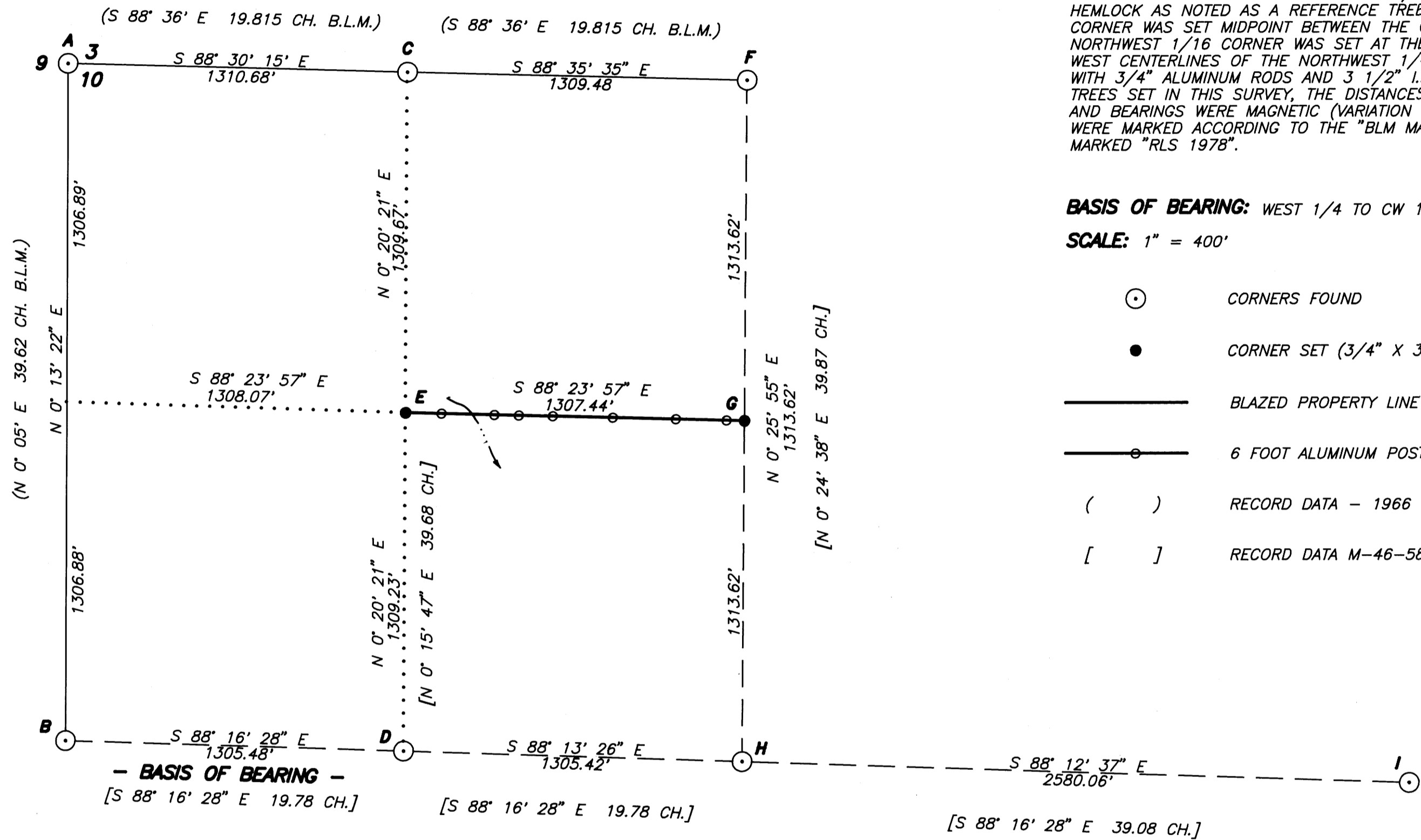
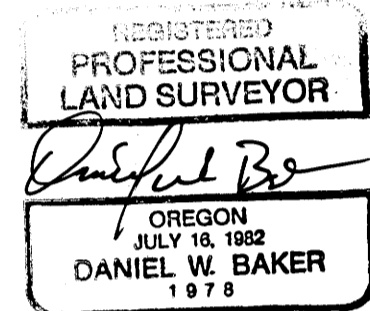
- NARRATIVE -

THIS SURVEY WAS MADE IN AUGUST AND OCTOBER, 1990 BY DANIEL W. BAKER OF PEEL BAKER LAND SURVEYING, INC. THE PURPOSE OF THE SURVEY WAS TO LOCATE, MONUMENT, AND MARK IN THE FIELD A PORTION OF THE PROPERTY LINES OF INTERNATIONAL PAPER COMPANY IN THE NORTHWEST 1/4 SECTION 10, T21S, R9W, W.M. A KERN K1M THEODOLITE AND DM502 EDM WERE USED TO PERFORM THIS SURVEY AND BEARINGS WERE BASED ON THE LINE FROM THE WEST 1/4 CORNER TO THE CENTER-WEST 1/16 CORNER AS PER M-46-58. CLOSED TRANSIT TRAVERSES WITH A MINIMUM ERROR OF CLOSURE OF 1'/10,000' WERE RUN BETWEEN FOUND MONUMENTS FOR CONTROL AND ALSO ALONG THE LINE TO BE MARKED FROM THE NORTHWEST 1/16 CORNER TO THE CENTER-NORTH 1/16 CORNER. OFFSETS WERE CALCULATED FROM THIS TRAVERSE LINE TO DETERMINE THE POSITION OF THE TRUE PROPERTY LINE. THE TRUE LINE WAS MARKED IN THE FIELD BY BLAZING TREES (BLAZES PAINTED RED) ON EITHER SIDE OF THE TRUE LINE AND BY SETTING 6 FOOT POSTS AT RANDOM INTERVALS ALONG THE TRUE LINE. EACH POST HAD AN "INTERNATIONAL PAPER COMPANY" DECAL ATTACHED, MARKED WITH THE DISTANCE AND DIRECTION TO THE NEAREST CORNER. THE WEST, NORTH AND EAST 1/4 CORNERS AND THE NORTHWEST SECTION CORNER AND THE WEST 1/16 CORNER WERE SET IN A 1966 BLM SURVEY. THE CENTER-WEST 1/16 CORNER AND THE CENTER 1/4 CORNER WERE SET IN M-46-58. THE CENTER 1/4 CORNER WAS RE-ESTABLISHED FROM THE 20" HEMLOCK AS NOTED AS A REFERENCE TREE IN M-46-58. THE CENTER-NORTH 1/16 CORNER WAS SET MIDPOINT BETWEEN THE CENTER 1/4 AND NORTH 1/4 CORNERS. THE NORTHWEST 1/16 CORNER WAS SET AT THE INTERSECTION OF THE NORTH-SOUTH AND EAST-WEST CENTERLINES OF THE NORTHWEST 1/4. CORNERS SET IN THIS SURVEY WERE MONUMENTED WITH 3/4" ALUMINUM RODS AND 3 1/2" I.P. COMPANY ALUMINUM CAPS. FOR ALL BEARING TREES SET IN THIS SURVEY, THE DISTANCES WERE TO A SPIKE IN THE SIDE OF EACH TREE AND BEARINGS WERE MAGNETIC (VARIATION - 20'). CORNER MONUMENTS SET IN THIS SURVEY WERE MARKED ACCORDING TO THE "BLM MANUAL OF INSTRUCTIONS - 1973" AND ALSO MARKED "RLS 1978".

BASIS OF BEARING: WEST 1/4 TO CW 1/16 CORNER AS PER M-46-58

SCALE: 1" = 400'

- CORNERS FOUND
- CORNER SET (3/4" X 30" ALUMINUM ROD & CAP)
- BLAZED PROPERTY LINE
- 6 FOOT ALUMINUM POSTS
- () RECORD DATA - 1966 B.L.M. SURVEY
- [] RECORD DATA M-46-58



A SECTION CORNER 3 & 10 ONLY

FOUND: U.S. B.L.M. BRASS CAP "1966"
34" FIR, N 50° E, 35.2'
16" HEMLOCK, S 45° E, 6.2'

C WEST 1/16 CORNER 3 & 10

FOUND: U.S. B.L.M. BRASS CAP "1966"
12" FIR, N 80° E, 30.0'
14" HEMLOCK, S 35° E, 16.9'

F 1/4 CORNER 3 & 10

FOUND: U.S. B.L.M. BRASS CAP "1966"
65" FIR STUMP, N 49° E, 10.0'
18" CEDAR STUMP, S 15° E, 30.2'

I 1/4 CORNER 10 & 11

FOUND: U.S. B.L.M. BRASS CAP "1963"

B 1/4 CORNER 9 & 10

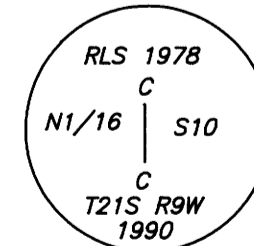
FOUND: U.S. B.L.M. BRASS CAP "1966"
20" FIR STUMP, S 14° W, 7.5'
22" FIR, S 34° E, 21.5'

D CENTER-WEST 1/16 CORNER SECTION 10

FOUND: 5/8" REBAR (M-46-58)

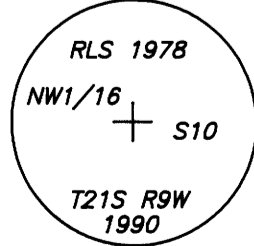
G CENTER-NORTH 1/16 CORNER SECTION 10

SET: 3/4" X 42" ALUMINUM ROD AND I.P. CO.
ALUMINUM CAP
20" FIR, S 8° W, 47.3'
SCRIBED CN 1/16 S10BT
22" HEMLOCK, N 88° W, 32.8'
SCRIBED CN 1/16 S10BT



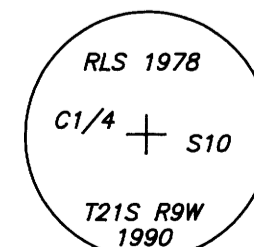
E NORTHWEST 1/16 CORNER SECTION 10

SET: 3/4" X 42" ALUMINUM ROD AND I.P. CO.
ALUMINUM ROD
18" HEMLOCK, N 79 1/2° E, 117.2'
SCRIBED NW 1/16 S10BT
28" FIR, S 10° E, 125.4'
SCRIBED NW 1/16 S10BT



H CENTER 1/4 CORNER SECTION 10

FOUND: 20" ROTTEN HEMLOCK STUMP,
N 22° W, 7.6' (M-46-58)
NOTE: 5/8" REBAR NOT FOUND
SET: 3/4" X 30" ALUMINUM ROD AND I.P. CO.
ALUMINUM CAP
36" FIR STUMP, N 46 1/2° E, 65.0'
7" HEMLOCK, S 16° E, 92.8'
SCRIBED C 1/4 S10BT
41" FIR STUMP, S 17 1/2° W, 40.6'
28" FIR STUMP, N 35 1/4° W, 32.8'



**COUNTY SURVEYORS FILE DATA
DO NOT REMOVE FROM OFFICE**

**SURVEY IN
NW 1/4 OF SECTION 10, T21S R9W, W.M.
DOUGLAS COUNTY, OREGON**

CLIENT: **INTERNATIONAL PAPER COMPANY**

PEEL BAKER LAND SURVEYING, INC.
1385 OAK STREET, SUITE 3, EUGENE, OREGON
(503) 343-7243

DATE: 12/12/90

M111-27