

COUNTY SURVEYORS FILE DATA
DO NOT REMOVE FROM OFFICE

RECORD OF SURVEY

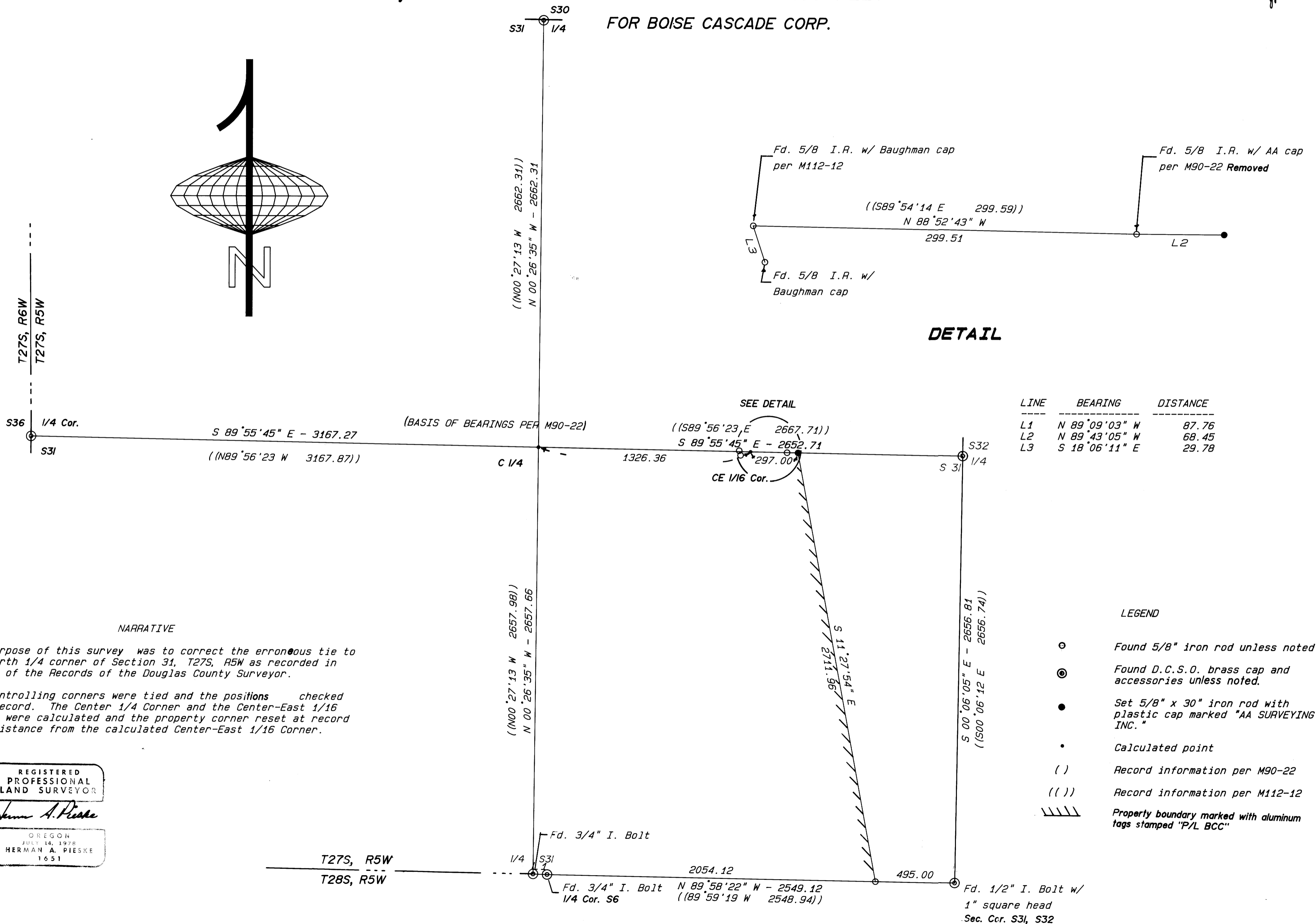
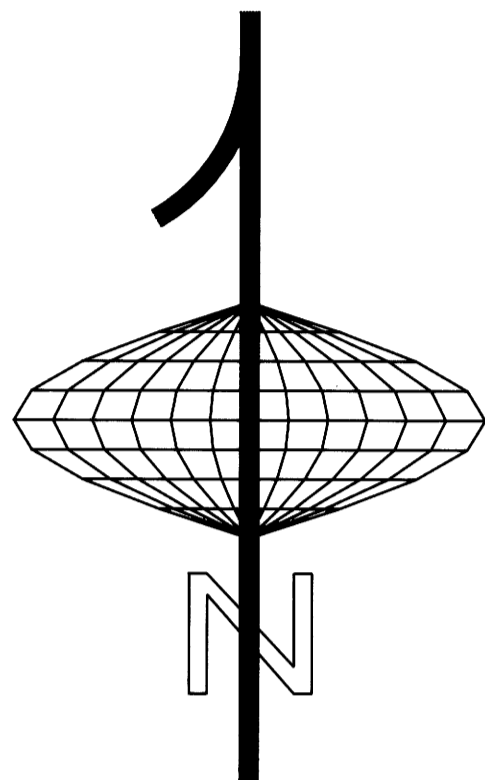
TO ESTABLISH BOUNDARIES IN THE SE 1/4, SEC. 31, T27S, R5W, W.M.
DECEMBER, 1990

SCALE: 1 INCH = 400 FEET

FOR BOISE CASCADE CORP.

7 1991 JP

MAY 11-23



NARRATIVE

The purpose of this survey was to correct the erroneous tie to the north 1/4 corner of Section 31, T27S, R5W as recorded in M90-22 of the Records of the Douglas County Surveyor.

The controlling corners were tied and the positions checked with record. The Center 1/4 Corner and the Center-East 1/16 Corner were calculated and the property corner reset at record deed distance from the calculated Center-East 1/16 Corner.

REGISTERED PROFESSIONAL LAND SURVEYOR

Herman A. Pieske

OREGON JULY 14, 1978 HERMAN A. PIESKE 1651

LINE	BEARING	DISTANCE
L1	N 89°09'03" W	87.76
L2	N 89°43'05" W	68.45
L3	S 18°06'11" E	29.78

LEGEND

- Found 5/8" iron rod unless noted
- ⊙ Found D.C.S.O. brass cap and accessories unless noted.
- Set 5/8" x 30" iron rod with plastic cap marked "AA SURVEYING INC."
- Calculated point
- () Record information per M90-22
- (()) Record information per M112-12
- //// Property boundary marked with aluminum tags stamped "P/L BCC"

MAP FILE M111-23