

DO NOT REMOVE FROM OFFICE

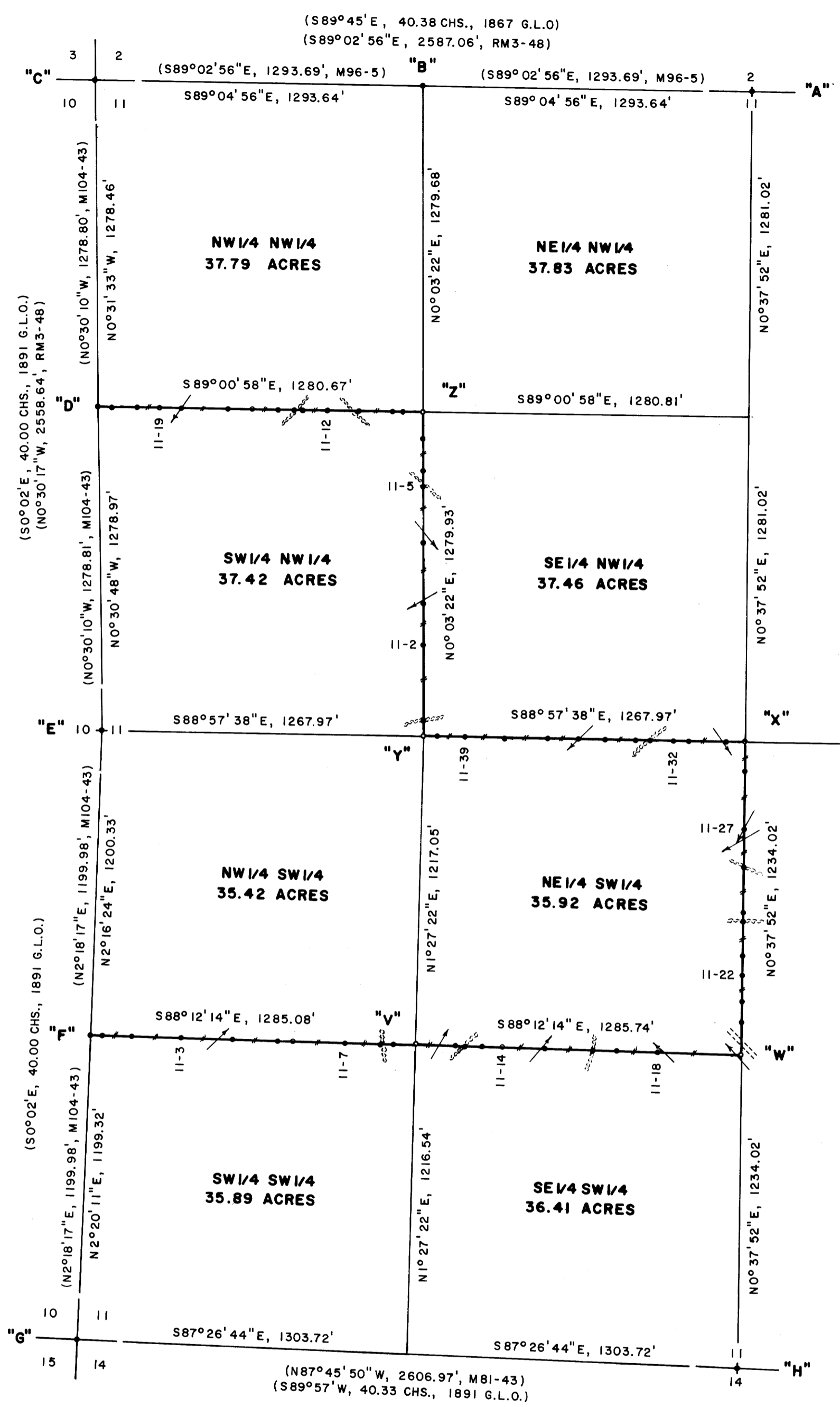
FILED  
 COUNTY SURVEYOR  
 DOUGLAS COUNTY, OREGON

SURVEY FOR  
 INTERNATIONAL PAPER COMPANY  
 SECTION 11, T21S, R11W, W.M.  
 DOUGLAS COUNTY, OREGON  
 BY  
 ROBERTS SURVEYING INC.  
 29 WEST 29TH STREET  
 EUGENE, OREGON 97405

NOVEMBER 20, 1990  
 SCALE 1" = 400'

C.S. File 63-1126  
 Map File M111-10

LOCATION OF BURIED MAGNETIC MARKERS					
S. 1/16 COR.	0'	EAST (AL. POST)	SW/4 11-32 278'	WEST (M.M. & AL. POST)	
SW/4 11-1	40'	EAST (M.M.)	SW/4 11-33 369'	WEST (M.M.)	
SW/4 11-2	163'	EAST (M.M. & AL. POST)	SW/4 11-34 423'	WEST (M.M. & AL. POST)	
SW/4 11-3	358'	EAST (M.M. & AL. POST)	SW/4 11-35 547'	WEST (M.M.)	
SW/4 11-4	565'	EAST (M.M. & AL. POST)	SW/4 11-36 664'	WEST (M.M. & AL. POST)	
SW/4 11-5	743'	EAST (M.M.)	SW/4 11-37 787'	WEST (M.M.)	
SW/4 11-6	802'	EAST (M.M. & AL. POST)	SW/4 11-38 944'	WEST (M.M. & AL. POST)	
SW/4 11-7	1009'	EAST (M.M. & AL. POST)	SW/4 11-39 1100'	WEST (M.M. & AL. POST)	
SW/4 11-8	1147'	EAST (M.M. & AL. POST)	SW/4 11-40 1207'	WEST (M.M.)	
SW/4 11-9	1193'	EAST (M.M.)	C.W. 1/16 1268'	WEST (M.M. & AL. POST)	
SW 1/16	1285'	EAST (M.M. & AL. POST)	NW/4 11-1 57'	NORTH (M.M. & AL. POST)	
SW/4 11-11	1446'	EAST (M.M.)	NW/4 11-2 358'	NORTH (M.M. & AL. POST)	
SW/4 11-12	1492'	EAST (M.M. & AL. POST)	NW/4 11-3 526'	NORTH (M.M. & AL. POST)	
SW/4 11-13	1550'	EAST (M.M.)	NW/4 11-4 760'	NORTH (M.M. & AL. POST)	
SW/4 11-14	1629'	EAST (M.M.)	NW/4 11-5 986'	NORTH (M.M. & AL. POST)	
SW/4 11-15	1790'	EAST (M.M. & AL. POST)	NW/4 11-6 1045'	NORTH (M.M.)	
SW/4 11-16	1982'	EAST (M.M. & AL. POST)	NW/4 11-7 1175'	NORTH (M.M. & AL. POST)	
SW/4 11-17	2081'	EAST (M.M.)	N.W. 1/16 1280'	NORTH (M.M. & AL. POST)	
SW/4 11-18	2245'	EAST (M.M. & AL. POST)	NW/4 11-9 77'	WEST (M.M.)	
C.S. 1/16	2571'	EAST (M.M. & AL. POST)	NW/4 11-10 115'	WEST (M.M. & AL. POST)	
SW/4 11-20	129'	NORTH (M.M.)	NW/4 11-11 250'	WEST (M.M.)	
SW/4 11-21	210'	NORTH (M.M. & AL. POST)	NW/4 11-12 375'	WEST (M.M. & AL. POST)	
SW/4 11-22	316'	NORTH (M.M.)	NW/4 11-13 472'	WEST (M.M.)	
SW/4 11-23	389'	NORTH (M.M. & AL. POST)	NW/4 11-14 510'	WEST (M.M. & AL. POST)	
SW/4 11-24	525'	NORTH (M.M. & AL. POST)	NW/4 11-15 568'	WEST (M.M.)	
SW/4 11-25	555'	NORTH (M.M.)	NW/4 11-16 669'	WEST (M.M. & AL. POST)	
SW/4 11-26	741'	NORTH (M.M. & AL. POST)	NW/4 11-17 765'	WEST (M.M.)	
SW/4 11-27	886'	NORTH (M.M. & AL. POST)	NW/4 11-18 953'	WEST (M.M. & AL. POST)	
SW/4 11-28	1116'	NORTH (M.M. & AL. POST)	NW/4 11-19 1036'	WEST (M.M.)	
C. 1/4 COR.	1234'	NORTH (M.M. & AL. POST)	NW/4 11-20 1123'	WEST (M.M. & AL. POST)	
SW/4 11-30	77'	WEST (M.M. & AL. POST)	NW/4 11-21 1227'	WEST (M.M.)	
SW/4 11-31	218'	WEST (M.M.)	N. 1/16 COR.	1281'	WEST (AL. POST)



**NARRATIVE**, THE PURPOSE OF THIS SURVEY IS TO POST AND BLAZE THE BOUNDARIES OF INTERNATIONAL PAPER OWNERSHIP IN SECTION 11. CORNERS "A", "B", "C", "D", "E", "F", "G", "H" AND "I" WERE FOUND IN THE FIELD AND USED AS CONTROL. A SERIES OF CLOSED RANDOM CONTROL TRAVERSES, USING A WILD T-16 THEODOLITE AND A DI-4L E.D.M., WERE RUN BETWEEN THE ABOVE MENTIONED CONTROLLING CORNERS. INVERSES WERE COMPUTED BETWEEN THE ABOVE TIED CONTROLLING CORNERS AND SECTION 11 WAS SUBDIVIDED IN ACCORDANCE TO THE 1973 MANUAL OF INSTRUCTION FOR THE SURVEY OF THE PUBLIC LANDS OF THE UNITED STATES. A CLOSED RANDOM PROPERTY LINE TRAVERSE, USING A WILD T-16 THEODOLITE AND A DI-4L E.D.M., WAS RUN ALONG THE PROPERTY LINES TO BE BLAZED AND POSTED. OFFSETS WERE COMPUTED FROM THIS RANDOM PROPERTY LINE TRAVERSE TO THE TRUE PROPERTY LINE. PROPERTY LINES WERE MARKED WITH RED PAINTED BLAZES, YELLOW INTERNATIONAL PAPER BOUNDARY LINE DECALS ATTACHED TO 72" ALUM. POSTS, AND BURIED FLUORESCENT ORANGE MAGNETIC MARKERS. ALUM. POSTS AND BURIED MAGNETIC MARKERS ARE REFERENCED BY A 4" x 6" ALUM. BOUNDARY LINE TAG NAILED TO A NEARBY TREE. TAG NOTES BEARING AND DISTANCE FROM TREE TO ALUMINUM POST OR BURIED MAGNETIC MARKER.

REGISTERED  
 PROFESSIONAL  
 LAND SURVEYOR  
*Lee Roberts*  
 OREGON  
 1-D ROBERTS  
 1993

**"A" NORTH 1/4 CORNER SECTION 11**  
 FD. 5/8" IRON PIN AS SET IN SURVEY RM3-48  
 12" DOWNED FIR, S62°W, 58.5' (SCRIBE VIS.), 1981 B.T.  
 16" FIR, N37°E, 79.5' (SCAR VIS.), 1981 B.T.

**"B" WEST 1/16 CORNER SECTIONS 2 AND 11**  
 FD. 1/2" IRON PIPE WITH BRASS CAP AS SET IN COUNTY SURVEY M96-5  
 22" CEDAR, N31°E, 14.0' (SCRIBE VIS.), 1984 B.T.  
 22" FIR, S86°W, 28.4' (SCAR VIS.), 1984 B.T.

**"C" N.W. CORNER SECTION 11**  
 FD. IRON PIPE/BRASS CAP AS SET IN SURVEY RM3-48  
 12" FIR, S63°E, 45.5' (SCAR VIS.), 1981 B.T.  
 14" FIR, N24°E, 11.4' (SCAR VIS.), 1981 B.T.  
 22" FIR, S63°W, 66.3' (SCRIBE VIS.), 1981 B.T.

**"D" NORTH 1/16 CORNER SECTION 10 AND 11**  
 FD. 3/4" ALUM. ROD/CAP AS SET IN SURVEY M104-43  
 14" MAPLE, N63°W, 15.0' (SCRIBE VIS.), 1987 B.T.  
 14" FIR, N87°E, 15.8' (SCRIBE VIS.), 1987 B.T.

**"E" WEST 1/4 CORNER SECTION 11**  
 FD. IRON PIPE/BRASS CAP AS SET IN SURVEY RM3-48  
 26" CEDAR SNAG, N03°W, 24.4' (NO MARKS), 1891 B.T.  
 36" CEDAR STUMP, S67°E, 53.5' (NO MARKS), 1891 B.T.  
 11" CEDAR, N12°E, 83.5' (SCAR VIS.), 1981 B.T.  
 17" FIR, WEST, 93.5' (SCAR VIS.), 1981 B.T.

**"F" SOUTH 1/16 CORNER SECTIONS 10 AND 11**  
 FD. 3/4" ALUM. ROD/CAP AS SET IN SURVEY M104-43  
 6" FIR, N84°W, 8.9' (SCRIBE VIS.), 1987 B.T.  
 13" FIR, N05°E, 19.1' (SCRIBE VIS.), 1987 B.T.

**"G" S.W. CORNER SECTION 11**  
 FD. 1960 B.L.M. BRASS  
 22" CEDAR STUMP, N69°E, 10.6' (SCAR VIS.), 1960 B.T.  
 26" CEDAR STUMP, S76°W, 15.2' (SCAR VIS.), 1960 B.T.  
 30" CEDAR STUMP, N41°W, 18.2' (SCRIBE VIS.), 1960 B.T.  
 35" HEMLOCK STUMP, S33°E, 7.6' (SCAR VIS.), 1960 B.T.

**"I" EAST 1/4 CORNER SECTION 11**  
 FD. 36" FIR STUMP, S45 1/2°E, 6.6' (SCRIBE VIS.), 1891 B.T.  
 SET 3/4" x 36" ALUM. ROD WITH 3/4" ALUM. CAP.  
 (BURIED PURPLE M.M. UNDER 36" ALUM. ROD)  
 13" CEDAR, N89°W, 9.4' (SCRIBED/PAINTED RED)  
 14" FIR, N62°E, 19.6' (SCRIBED/PAINTED RED)  
 3/4" IRON PIN SET IN SURVEY M96-23 BEARS  
 S41°51'45"W, 29.24'

**LEGEND**

- CORNERS FOUND AND USED FOR CONTROL
- CORNERS SET, 3/4" FINNED ALUMINUM RODS WITH 3/4" ALUMINUM CAPS. CAPS STAMPED S-T-R, DATE & P.L.S. 1039.
- LINES MARKED AND BLAZED THIS SURVEY
- ( ) DATA OF RECORD

BASIS OF BEARING, INVERSE BETWEEN WEST 1/4 CORNER AND S.W. CORNER SECTION 11. SAID INVERSE BEING N2°18'17"E AS SHOWN ON SURVEY M104-43

(M.M.) INDICATES LOCATION OF BURIED MAGNETIC MARKERS. MARKERS ARE FLUORESCENT ORANGE IN COLOR AND ARE BURIED, 12" TO 18" DEEP, ALONG LINE AS SHOWN.

DISTANCES TO B.T.'S ARE CENTER MEASURE.

ALL NEW B.T.'S ARE SCRIBED AND HAVE A METAL WASHER STAMPED "P.L.S. 1039" NAILED TO LOWER BLAZE. SCRIBED BLAZES ARE PAINTED RED.

ALL NEW B.T.'S HAVE A 6" SPIKE DRIVEN INTO THE CENTER OF THE TREE TO SERVE AS A CHAINING POINT FOR MEASURED DISTANCES.

**"V" S.W. 1/16 CORNER SECTION 11**  
 SET 3/4" x 24" ALUM. ROD WITH 3/4" ALUM. CAP.  
 (BURIED PURPLE M.M. UNDER 24" ALUM. ROD)  
 15" ALDER, N40°W, 37.0' (BARK SCRIBED/PAINTED RED)  
 46" MAPLE, S40°E, 7.7' (BARK SCRIBED/PAINTED RED)

**"W" C.S. 1/16 CORNER SECTION 11**  
 SET 3/4" x 36" ALUM. ROD WITH 3/4" ALUM. CAP.  
 (BURIED PURPLE M.M. UNDER 36" ALUM. ROD)  
 13" MAPLE, N06°E, 59.2' (BARK SCRIBED/PAINTED RED)  
 16" ALDER, S72°E, 25.7' (BARK SCRIBED/PAINTED RED)

**"X" CENTER 1/4 CORNER SECTION 11**  
 SET 3/4" x 36" ALUM. ROD WITH 3/4" ALUM. CAP.  
 (BURIED PURPLE M.M. UNDER 36" ALUM. ROD)  
 14" HEMLOCK, N66°W, 30.9' (SCRIBED/PAINTED RED)  
 14" FIR, N20°E, 15.1' (SCRIBED/PAINTED RED)

**"Y" C.W. 1/16 CORNER SECTION 11**  
 SET 3/4" x 36" ALUM. ROD WITH 3/4" ALUM. CAP.  
 (BURIED PURPLE M.M. UNDER 36" ALUM. ROD)  
 9" FIR, N07°E, 22.4' (SCRIBED/PAINTED RED)  
 20" FIR, S74°W, 22.8' (SCRIBED/PAINTED RED)

**"Z" N.W. 1/16 CORNER SECTION 11**  
 SET 3/4" x 24" ALUM. ROD WITH 3/4" ALUM. CAP.  
 (BURIED PURPLE M.M. UNDER 24" ALUM. ROD)  
 13" ALDER, N08°E, 21.8' (BARK SCRIBED/PAINTED RED)  
 16" FIR, S03°W, 44.8' (SCRIBED/PAINTED RED)

**"H" SOUTH 1/4 CORNER SECTION 11**  
 FD. 1979 IRON PIPE/BRASS CAP AS SET IN SURVEY M81-43  
 9" CASCARA, N53°W, 14.1' (BARK SCRIBED), 1979 B.T.  
 15" FIR, S82°E, 12.3' (SCAR VIS.), 1979 B.T.

Map File M111-10