

COUNTY SURVEYORS FILE DATA
DO NOT REMOVE FROM OFFICE

FILED

2/2

MAY 4

TF

LOT SURVEY

COUNTY SURVEYOR
DOUGLAS COUNTY, ORE.

LOT 2, NORTH OAK KNOLL SUBDIVISION
IN THE SE 1/4, SECTION 10, T27S, R6W, W.M.

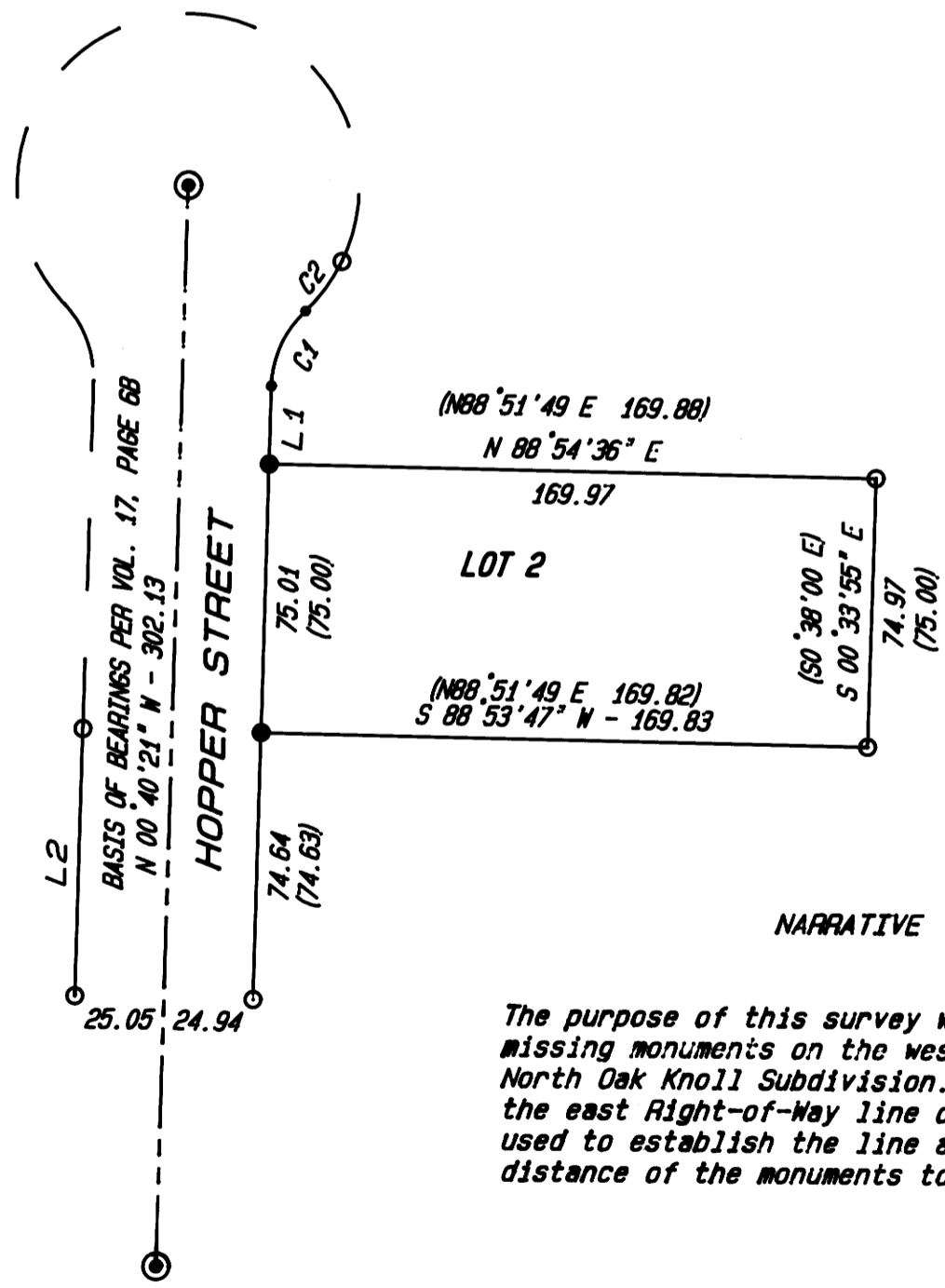
FOR LONNIE KELLY

APRIL, 1990 SCALE 1 Inch = 50 Feet



CURVE	RADIUS	DELTA	LENGTH	TANGENT	CHORD	CHORD/BPG
C1	30.00	45°09'36"	23.65	12.48	23.04	N 21°54'27" E
C2	47.97	20°38'03"	17.28	8.73	17.18	N 34°14'10" E

LINE	BEARING	DISTANCE
L1	N 00°40'21" W	21.90
L2	N 00°41'09" W	74.69



LEGEND

- Found 5/8" iron rod
- ⊙ Found Standard Street Monument
- Set 5/8" x 30" iron rod w/ plastic cap marked "AA SURVEYING INC."
- () Record information per Vol. 17, Page 6B
- Calculated Point

REGISTERED
PROFESSIONAL
LAND SURVEYOR

Mark A. Heimbarger

OREGON
JULY 16, 1987
MARK A. HEIMBURGER
2287

NARRATIVE

The purpose of this survey was to replace the missing monuments on the west boundary of Lot 2, North Oak Knoll Subdivision. The two monuments on the east Right-of-Way line of Hopper Street were used to establish the line and proportionate distance of the monuments to be set.